

# Local Trees



*Corymbia callophylla*  
**Marri**



*Eucalyptus rudis*  
**Flooded Gum**



*Melaleuca raphiophylla*  
**Paperbark**



*Allocasuarina fraseriana*  
**Sheoak**

The Men of the Trees Nursery, in Hazelmere, kindly provides the local native seedlings planted in the Grove sites. They are planted by the team at SERCUL and Men of the Trees with assistance from local volunteers, corporate groups and school children.

**If you would like more information or to get involved in planting please contact:**

**SERCUL** (details on back of brochure) or

**Men of the Trees** on (08) 9250 1888 or

[www.menofthetrees.com.au](http://www.menofthetrees.com.au)

For more information on the Bowra & O'Dea Memorial Groves visit: [www.bowraodea.com.au](http://www.bowraodea.com.au)

## Please cooperate and respect the land

- Keep sites clean
- Report vandalism to SERCUL
- **Non-Organic** materials are **NOT** permitted, including plastic flowers, photo frames or ornaments.
- Please only use plaques provided to you by Bowra & O'Dea (concrete is not necessary).
- **No planting is permitted without consent from SERCUL.**

# Beckenham Memorial Park



*Boardwalk to the Yule Brook Homestead*



*Watch a native tree grow in memory of your loved one*



South East Regional Centre for Urban Landcare

1 Horley Road (off the Kenwick Link)

Beckenham WA 6107

P | (08) 9458 5664

E | [sercul@sercul.org.au](mailto:sercul@sercul.org.au)

W | [www.sercul.org.au](http://www.sercul.org.au)



# Beckenham Memorial Park Project

The Men of the Trees Beckenham Memorial Park project, sponsored by Bowra & O'Dea, commenced in 2008 with the goal to create Memorial Groves for the families of Bowra & O'Dea clients. Each Grove has approximately 4,000 trees and native plants.

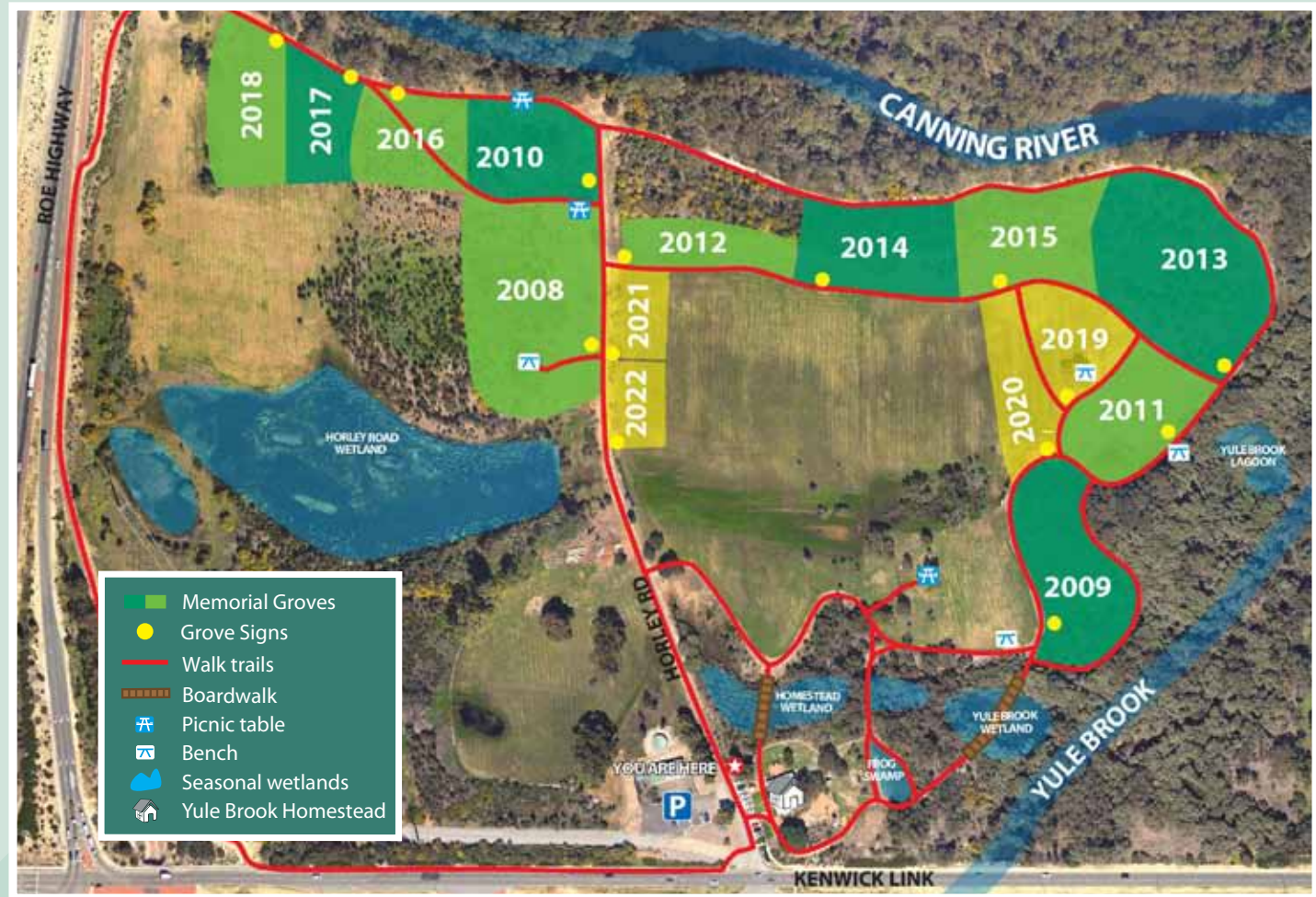
This project will continue for eight years at the Beckenham Open Space, with each established Memorial Grove being preserved for a minimum of 25 years. This project is made possible through a cooperative agreement between:

- **SERCUL** — Contracted grounds manager
- **Men of the Trees** — Project motivators and plant suppliers
- **Bowra & O'Dea** — Sponsors, providers of plaques and the link to the families
- **WA Planning Commission** — Land managers

## Placing a plaque by a tree

Your plaque goes into the Grove that matches the year in which your loved one passed.

1. **I have a plaque:** Please feel free to come to the Beckenham Memorial Park and install the plaque near a tree or shrub (NO concrete) in the Grove that corresponds with the year your loved one passed.
2. **I have a plaque but cannot get it into the ground:** Come to the SERCUL office during office hours (we are open from 8am-4pm).
3. **I do not have a plaque but would like to choose a tree:** Come to the Beckenham Memorial Park during office hours and the SERCUL staff will provide you with a tag to label your chosen tree.
4. **I do not have a plaque but want one:** Contact Bowra and O'Dea to purchase the plaque. NOTE: Only Bowra & O'Dea clients qualify to install memorial plaques. SERCUL does not supply plaques.



## History of Beckenham Open Space

This area is currently known as the Beckenham Open Space and the Homestead has cultural heritage significance. Below outlines the known history of the property:

- **Prior to 1830:** The area was used as a river crossing by Aboriginal people and later by the settlers. The crossing was known as 'The Rapids' and is located at the end of Horley Rd.
- **1830's:** The property was granted to three officers of the East India Company as part of the Crown Grant system and was used as market gardens and farmland.
- **Early 1880's:** The Homestead was constructed.

- **1888 — 1998:** The property was sold and subdivided several times from 1888 until purchased by the WAPC in 1998. Now the land is a Public Reserve.
- **2002:** Restoration commenced on the Homestead.
- **2003:** SERCUL began operations from the Homestead.
- **2009:** The Homestead was granted conservation and heritage significance.

Since 2003, SERCUL have been restoring the previously farmed land by removing weeds and replanting native endemic species. The Memorial Grove project forms a major part of this rehabilitation work.