

SERCUL

ANNUAL REPORT

2015

Community improving the health of our land and waterways



Photo by Daniel Millea

CONTENTS

Highlights for 2014-2015	3
Achievements for 2014-2015	4
From the Chair—Pat Hart	5
From the CEO—Brett Kuhlmann	6
SERCUL Constitution	7
NRM Organisational Structure in Perth	8
SERCUL Staff and Committee 2014-2015	9
SERCUL Structure	10
SERCUL NRM Program Areas	10
Community Support and Education	11-16
Landcare and Restoration	17-30
Community Groups	31-38
Monitoring and Research	39-40
Auditor’s Report	41
Financial Summary	42
Financial Report	43-45
Statement by the Management Committee	46
New Projects for 2015-2016	48
Acknowledgement of Funding Partners	49
Thank You	50

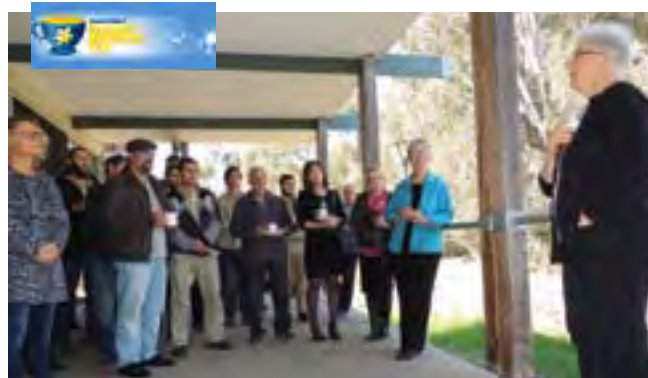


HIGHLIGHTS for 2014-2015

Canoeing on the Canning celebrated **10 years** of workshops



SERCUL hosted a **Biggest Morning Tea** and raised **\$1605** for cancer research in honour of Julie Robert



SERCUL and the Bannister Creek Catchment Group were a finalist in **Australia's 2014 Riverprize** for the **Bannister Creek** Living Stream project



ACHIEVEMENTS for 2014-2015

>13 402 hrs
Volunteer Contribution

>\$437 124
Total Value of Volunteering
(Value of Volunteering = \$32.53/hr)

161 267
Plants Installed

>17 879
People Received Education, via
Direct Information or On-ground
Contact

Hosted web pages for **14**
environmental community groups

117 Waterway sample sites

534 Samples collected in the
Perth Region

FROM THE CHAIR—PAT HART



As it is with most community organisations working with the management and repair of our precious environment there are always many challenges coming from many angles. The ability to hang in and work through these many obstacles is dependent on the quality of the people you have with you on the journey. How fortunate I have been as Chairperson of SERCUL to have on this journey the most amazing and committed staff and committee members. Through the changing funding cycles and the changes at the political level within State Agencies, SERCUL has been able to adapt to the variances and our staff have shown their true qualities by having the ability to multitask and show amazing initiative in adapting to the times.

Our key Government Agency, formally known as the Swan River Trust and now known as the Estuaries and Rivers division of the Department of Parks and Wildlife, have been outstanding in their support of not only SERCUL but the other sub regional organisations. They have been the unofficial 'Catchment Management Authority' for many years and so much has been achieved through that role. As their

new role is unfolding we are hopeful that the outstanding results that have been achieved with the sub regional groups in the past will be recognised and that the funding and support will continue. Where we can, we will take time to demonstrate to our politicians the benefits of State funding being invested into the sub regions.

We must also recognise our Local Government partners who have all shown confidence in the role SERCUL plays in our south east region and have given us and the community environmental groups within their locality, great support in many ways over the years.

The last six months have seen our CEO Julie Robert having to take extended sick leave due to her challenge with cancer. A challenge she has really taken up and we are so proud of the time and effort she has put into that journey so far. Brett Kuhlmann took over the reins immediately knowing he had big shoes to fill, and rise to that challenge he has. He is doing a great job under difficult circumstances, which has been made a little easier by having the full support of our committee and staff. We also said farewell to our Finance Manager of 12 years, Sandy Wainwright, who retired and will be really missed. Once again we were so fortunate to have Monica Estrada who was previously our Water Quality and Volunteer Manager rise to the challenge and has taken over Sandy's role and is doing a great job.

While the challenges will always be there, we also know there are often positive opportunities arising. We are very excited as we work toward a partnership with Marie Taylor and her team from Yelakitj Moort Nyungar Organisation to create opportunities to work together in creating cultural awareness education opportunities not only for schools but for the broader community.

Pat Hart
Chairperson

FROM THE CEO—BRETT KUHLMANN



The year of 2014-15 has seen a realisation of the anticipated changes to the NRM political landscape. The merger of the Swan River Trust with the Department of Parks and Wildlife represents new challenges in financial stability for the sub regions. Ongoing core funding support for the sub regions, similar to the support provided through the previous entity of the Swan River Trust, is yet to be determined. The change; however, also presents new opportunities, encouraged through the existing programs and working relations. The increased engagement with and potential for project support through the Department of Parks and Wildlife as a whole, is evolving.

The resulting consolidation of our operation has seen a greater clarity over the direction that is required to enable SERCUL to progress toward our vision and objectives. The vision is simple but the mission and objectives are all encompassing, requiring work at multiple levels. There is always a balance between financial income and delivery. The development of this organisation, from our roots in multiple community organisations who merged

and grew to become a large not-for-profit community landcare organisation, is testament to the dedication, passion and significant effort of many individuals. It is also testament to a shared vision across multiple organisations and community members.

In 2014-15, SERCUL invested \$3 105 320 in environmental restoration; education and training; monitoring and research and community support.

The news of our CEO's new challenge with cancer was a shock to everyone. Julie Robert has been leading this organisation from its inception in 2003 and her networks are extensive. A 'Biggest Morning Tea' event to raise funds for cancer research and provide an opportunity for everyone to see Julie received an overwhelming attendance. Although Julie's major focus has to be toward addressing this new challenge, her passion and drive for SERCUL's vision continues. Despite being on extended sick leave, Julie still provides advice and guidance.

It is during times of challenge that you realise the strength of the group of individuals around you. I have to say that the SERCUL team is amazing. I have a great respect and admiration for the efforts of our staff and our executive committee. To our volunteers and our stakeholders, thank you for your dedication and support.

2015-16 will bring new challenges and new opportunities. We have a vision in mind and passion in our hearts. We also; however, have the combined collective of number crunchers, planners, visionaries, project implementers, the politically astute and a lot of common sense. It is this collective group that makes this organisation. It is through this collective that we will continue working toward our vision.

Brett Kuhlmann
Acting Chief Executive Officer

SERCUL CONSTITUTION

VISION

To have, as a given, the natural resources of the South Region of Perth managed in a healthy and sustainable manner by all stakeholders for future generations.

MISSION

The aim is to use integrated Natural Resource Management to develop cultural change in how the community views and interacts with the environment while promoting and actively participating in the improvement of the health of waterways and other ecosystems within the South Region.

OBJECTIVES

- a. To identify priority Natural Resource Management issues in the South Region in partnership with Local Government, State Government and industry.
- b. To ensure biodiversity within the South Region is monitored, protected and enhanced.
- c. Assist community, State and Local Government in the coordination of Natural Resource Management in the South Region.
- d. Support and encourage the implementation of best management practice of natural resources within the South Region.
- e. Recognise and embrace Aboriginal, cultural and natural heritage.
- f. Foster research on matters relating to the South Region's natural and cultural heritage.
- g. Work in partnership with Local Government, State Government and industry to educate the wider community to protect our natural resources.
- h. Support and encourage the formation and training of community environment groups.
- i. Support the development and implementation of projects that occur outside the South Region that align with and benefit the delivery of the SERCUL objectives.
- j. Administer the South East Regional Centre for Urban Landcare Inc. funds to promote the objectives and outcomes of the association.

NRM ORGANISATIONAL STRUCTURE IN PERTH

SERCUL, as an incorporated, independent community environmental organisation, is able to bring together the community, Local Governments, business, educational institutions and Government agencies to plan for, develop and implement projects that will improve the natural environment using a strategic and integrated approach.

SERCUL is a sub-regional organisation that operates within the metropolitan and peri-urban areas of the Canning River Catchment. The area covered takes in most of the southern and eastern suburbs of Perth and includes Dyarguu (the Canning River), the Southern-Wungong River and parts of Derbarl Yerrigan (the Swan River). This is shown on the map below:

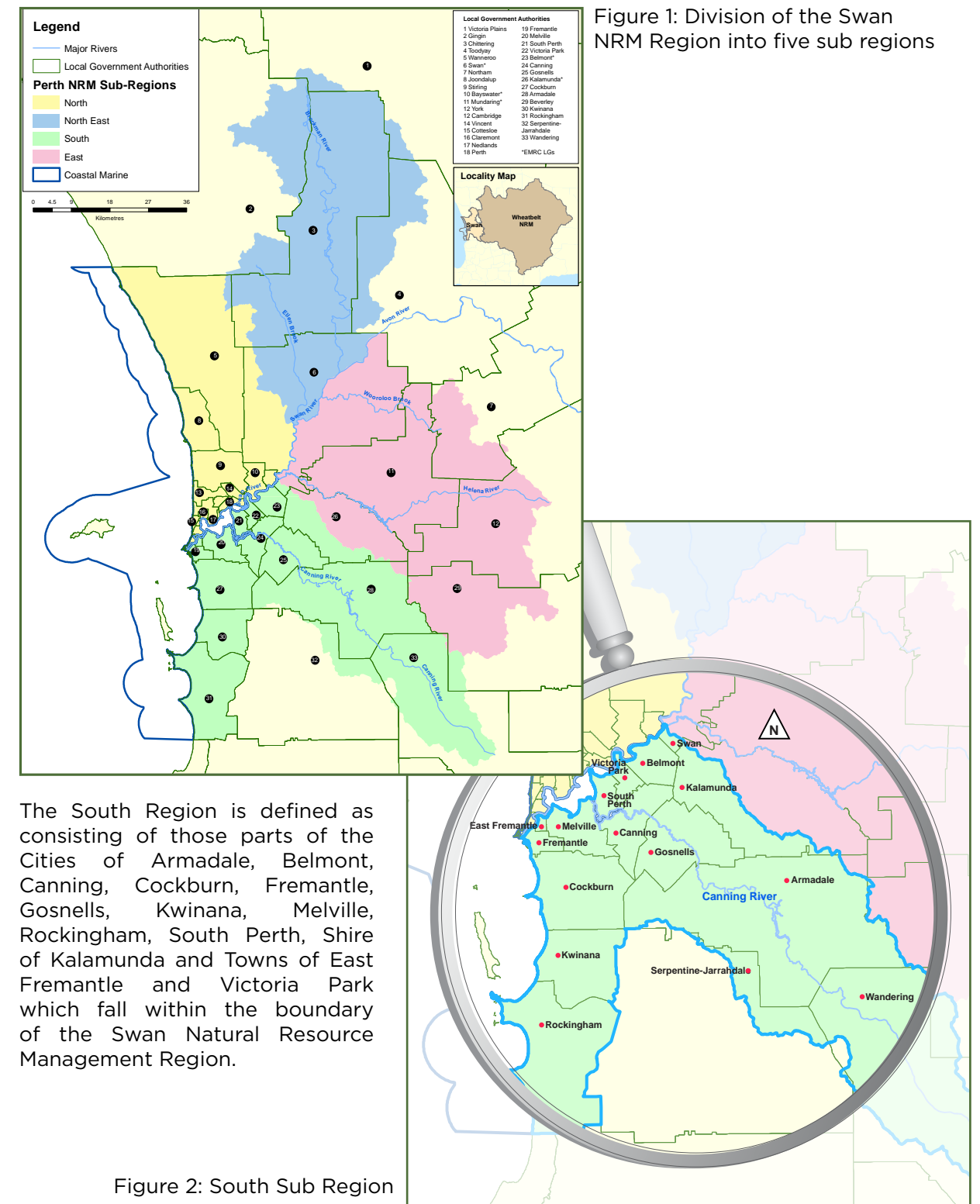


Figure 2: South Sub Region

SERCUL STAFF AND COMMITTEE 2014-2015

STAFF EMPLOYED DURING 2014-15

Chief Executive Officer: Julie Robert
 Landcare Services Manager (DNIP)/Act. CEO 2015: Brett Kuhlmann
 Financial Administration Manager: Sandy Wainwright
 Financial Administration/HR Officer: José Alcalá
 Education and Promotion Manager (PAP): Amy Krupa
 Environmental Education Officer (PAP): Deb Taborda
 Graphic Designer and Promotion Officer: Melinda Snowball
 Little Green Steps WA Program Manager: Paula Kalinowski
 Little Green Steps WA Education Officer: Kylie Hosking
 Water Quality & Business Planning Manager: Monica Estrada
 Urban Waterways Renewal Officer (Armadale): Glen Byleveld
 Environmental Services Landcare Coordinator: Matt Grimbly
 City of Canning Landcare Officer/BCCG Coordinator: Amy Warner
 GIS and Projects Officer: Ditte Strebelt
 Precinct Manager and Landcare Officer: John Maliunas
 Landcare Officer: Tracy Evans
 Water Quality and Volunteer Coordinator: Alice Atkinson
 Landcare Officer: Dan Friesen
 Landcare Officer: Daniel Millea
 Environmental Engineer and Landcare Officer: Wilson Orjuela
 Water Quality Officer: Hayden Lindsay
 Restoration Ecologist: Dr. Rose Weerasinghe

GREEN TEAM STAFF

Russell Gorton
 Chee Lum
 Saw Ta Pweh
 Saw Ha Say Htoo
 Klara Brown
 Catherine Lacey
 Darren O'Brien
 Samuel Vinton-Boot
 Russell Walczak
 Hayden Lindsay
 Tony Parrelli

REGULAR VOLUNTEERS

OTHER THAN SERCUL COMMITTEE

Errol and Margaret Harwood
 Doug Murphy
 Tina Thorne
 Melanie Kowald
 Lat Too
 Andy Owen
 Inclusion Western Australia

EXECUTIVE COMMITTEE

Chair: Mrs Pat Hart
 Vice Chair: Mr Marc Lane
 Treasurer: Mr Max Houghton
 Member: Mr Brian Aldrich
 Member: Mr Geoff Pettifer
 Secretary: Mrs Yvonne Ward

COMMUNITY COMMITTEE MEMBERS

Sally Bryant
 David James
 Dick Stone

STATE AND LOCAL GOVERNMENT REPRESENTATIVES

Swan River Trust
 City of Armadale
 City of Belmont
 City of Canning
 City of Cockburn
 City of Fremantle
 City of Gosnells
 Town of Kwinana
 City of Melville
 City of South Perth
 Town of Victoria Park



SERCUL STRUCTURE



SERCUL operates on three levels of delivery; Community, Partnerships and Environmental Services to deliver our program areas. Each of these delivery models are undertaken to enable SERCUL to progress towards our vision and objectives.

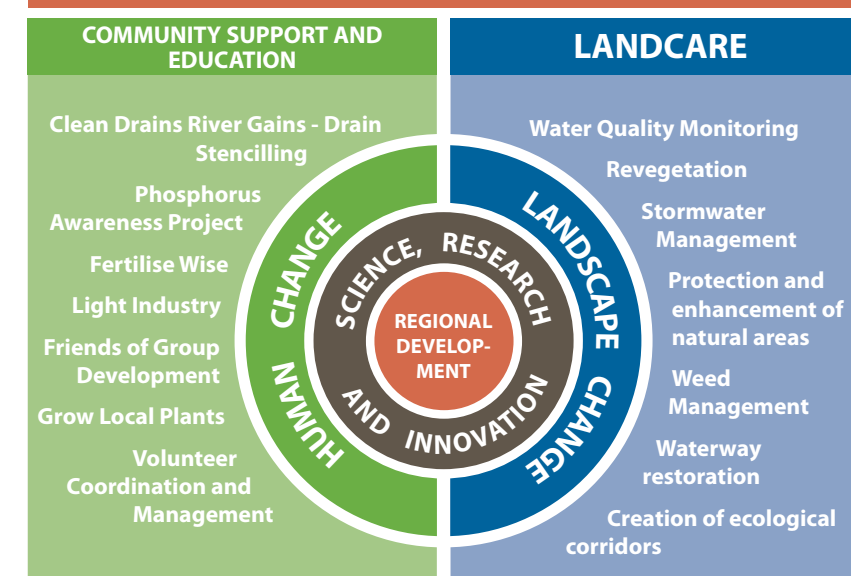
Community is our grass roots and our passion; we are all part of the community we live in, impact on, influence and have the potential to improve.

Partnerships are undertaken with a variety of stakeholders with whom we share a

common vision. Individual partnership projects are usually undertaken toward specific objectives.

Environmental Services are undertaken on a fee for service basis. The specific intent of this delivery model is to generate income to support our community delivery model. It is recognised that in an ever tightening and diminishing funding environment there is limited external financial support provided to this area. We consider community delivery as an important aspect of both landscape change and human change.

SERCUL NRM PROGRAM AREAS



EDUCATION PROJECTS



PHOSPHORUS AWARENESS PROJECT

Coordinated by Amy Krupa and Deb Taborda

PROJECT OVERVIEW

This project is an education campaign for the general community, educating them to decrease their nutrient outputs and thus algal blooms in the Swan and Canning River Systems.

KEY ACHIEVEMENTS

22 **displays** at the Perth Garden Festival, Community Science Expo and other community festivals, speaking with more than 6110 people.

286 **school presentations** to 7290 students from kindy to year 12.

25 **school planting sessions** by kindy to year 12 students with:

PLANTS INSTALLED - 6115

VOLUNTEERS - 800

VOLUNTEER HOURS - 930

VALUE - \$30 253

17 **community presentations** to 395 people.

2015 **LGA Annual Nutrient Survey** sent to Local Governments in June. Received 21 responses and report is currently being written.

Supported groups with project resources on 34 occasions.

Hosted four **Canoeing on the Canning workshops** with 70 teachers and corporate employees attending this professional development workshop.

Catchments, Corridors and Coasts—on the organising committee and presented at this three-day course attended by 24 participants.

Fertilise Wise Project—over 2825 of all five brochures distributed at events and to nurseries.

Grow Local Plants Project—over 5435 of all five brochures distributed at events and to nurseries.

Brochure Distribution—over 14 380 Phosphorus Awareness Project resources distributed.

Articles—about the Project in newspapers and newsletters on 11 occasions.

Education Newsletter—four per year distributed to 295 schools and teachers.

Clean Drains River Gains—one drain stencilling session held in Roleystone with 30 drains stencilled by Roleystone Community College Bushrangers.

VOLUNTEERS - 20

VOLUNTEER HOURS - 20

VALUE - \$651



FERTILISE WISE FERTILISER TRAINING

Coordinated by Amy Krupa

PROJECT OVERVIEW

This project aims to train school gardeners, turf managers and Local Government officers in fertiliser best management practices, specific to Perth. The training is organised by SERCUL and delivered by John Forrest, a lecturer in turf management at Challenger Institute of Technology.

KEY ACHIEVEMENTS

- Five training sessions held with 88 turf managers trained from 56 organisations including public and private schools, Local Governments, universities, golf clubs, country clubs and fertiliser contractors.
- Partnership with the Water Corporation to provide this training for school gardeners.



Participants enjoying Canoeing on the Canning



School gardeners learning about soils

Kindly funded by the Swan River Trust's Healthy Rivers Program, the Western Australian Government's State NRM Program and SERCUL

EDUCATION RESOURCES

MOZZIE WISE EDUCATION PROGRAM

Coordinated by Dr. Rose Weerasinghe, Amy Krupa and Deb Taborda

PROJECT OVERVIEW

This is the second year of the Mozzie Wise Education Program. We have prepared and implemented community mosquito awareness strategies to educate school children and local communities about how to reduce mosquito numbers within the community.

Public education is an integral part of the 'Integrated Mosquito Management' program. An informed public that acts upon their knowledge is critical for mosquito control as well as to reduce unnecessary chemical demand.

KEY ACHIEVEMENTS

SERCUL developed the following education materials:

1. Mozzie Wise Character
2. Mozzie Wise Brochure: How to protect yourself and your home from mosquitoes
3. Mozzie Wise Poster: Protect yourself from being bitten! Remember the 4ds
4. Mozzie Wise Poster: Prevent mosquitoes breeding around your home

5. Mozzie Wise School Curriculum Package: Three teacher resource books covering Foundation to Year 10
6. Mozzie Wise School Incursion: A PowerPoint presentation which can be used in schools to guide students to identify mosquito breeding habitats within their school community and at home.

SERCUL have held:

1. A mosquito awareness evening with the City of Canning and the Department of Health to share information with the community.
2. A mosquito awareness presentation for Bush Rangers, Rossmoyne Senior High School.
3. A presentation: 'Challenges in Stormwater and Mosquito Management' for NRM officers at Armadale.

Kindly supported by Perth Region NRM, Department of Health, Contiguous Local Authority Group-City of Canning and SERCUL



EDUCATION PROGRAMS



LITTLE GREEN STEPS WA PROGRAM

Coordinated by Paula Kalinowski

PROJECT OVERVIEW

February 2014 marked the end of funding for the 'implementation phase' of Little Green Steps (LGS) WA, an Australian Association for Environmental Education WA Chapter project. LGS WA supports Education for Sustainability in the early years learning sector for children aged 0-8 years.

LGS WA provides professional development workshops, resources, newsletters, ideas and networking opportunities to anyone that would like to improve their understanding of sustainability and link these practices with the Early Years Learning Framework and the National Quality Standard.

In 2014-15 LGS WA completed a successful 12-month trial with the City of Cockburn of a local Government based approach. As part of this agreement, LGS WA is based at the City of Cockburn's Coolbellup Hub office. The success of this trial has prompted a two-year partnership with SERCUL which employs the LGS WA Program Manager.

KEY ACHIEVEMENTS

- Workshops completed in Perth, Port Hedland, Albany and Esperance.
- Launched a new website and membership program.
- Hired a part-time staff member under a new partnership established with Waste Wise for a part-time position in 2014/15 to produce a new waste resource kit.
- Three new workshops developed and delivered.
- The City of Cockburn and City of Armadale signed up for a partnership over the next two financial years (2015-2017).
- Attended the Community Science Expo 2014.

VOLUNTEERS - 7

VOLUNTEER HOURS - 202

VALUE - \$6571

Kindly funded by Lotterywest and the City of Cockburn



Fun for the early years at the 2014 Community Science Expo



New partnership with One World Centre created 'Culture and Sustainability' Early Years Workshop

VOLUNTEER PROGRAM

VOLUNTEER COORDINATION PROGRAM

Coordinated by Alice Atkinson

PROGRAM OVERVIEW

SERCUL has continued implementing a volunteer management program which is aimed at offering opportunities for learning, gaining experience and giving back to the community as well as enabling SERCUL to gain a lot of hard work from volunteer's time and effort.

KEY ACHIEVEMENTS

Coordination of volunteers conducting SERCUL and other community groups' activities using the principles and procedures developed during this program.

- Implemented a new more efficient volunteer management system called VIRA.
- We would like to thank all those volunteers who have really committed themselves to help us deliver our projects on ground, analyse water quality, maintain our veggie garden and perform various office tasks.

ACTIVE VOLUNTEERS - 37, including 21 students

COMMUNITY BASED GROUPS -
Inclusion Western Australia, Bentley Health Unit, Sathya Sia, Shah Satnam Ji, Seventh Day Adventist, CVA, CVA Earth Assist Program, Green Army, Bateman and Winthrop Scouts

SCHOOL GROUPS - Rossmoyne Bush Rangers, Armadale Education Support Bush Ranger Cadets, Lynwood SHS, South Fremantle SHS, Riverton Primary School, Yule Brook College, Mel Maria Primary School

CORPORATE GROUPS - Department of Mines and Petroleum, Wood Group Kenny, Iluka Resources

VOLUNTEER HOURS - 2078

VALUE - \$68 762

Value of Volunteer hours

2014 - **\$32.53 per hour**

2015 - **\$33.71 per hour**

Special mention to Doug Murphy, Tina Thorne and La Too who have individually contributed over 200 hours each this year alone. SERCUL would like to thank them for their dedication and continuous support.

CHEVRON - CONSERVATION VOLUNTEERS AUSTRALIA

Coordinated by Amy Warner

PROGRAM OVERVIEW

SERCUL would like to extend their gratitude to Chevron Australia and Conservation Volunteers Australia for the provision of teams to undertake necessary work on the ground. This support has been invaluable in assisting our local groups to achieve their onsite outcomes and subsequently improve the health of the Swan-Canning River System.

These teams have been available to Catchment Groups and Friends of Groups including Canning River Regional Park Volunteers (CRRPV); Canning River Residents Environmental Protection Association (CRREPA); Friends of Brixton Street Wetlands; Wilson Wetlands Action Group (WWAG); Armadale Gosnells Landcare Group (AGLG) and Bannister Creek Catchment Group (BCCG).

Many thanks again to Chevron and the staff at Conservation Volunteers Australia for their ongoing support.



Inclusions WA helping plant in the SERCUL gardens

ADMINISTRATION SERVICES

FINANCIAL ADMINISTRATION SUPPORT TO COMMUNITY GROUPS

Coordinated by Sandy Wainwright, Jose Alcala and Julie Robert

The SERCUL Financial Administrators continue to provide financial management and/or payroll assistance to the following community groups in the SERCUL region:

- Armadale Gosnells Landcare Group
- Bannister Creek Catchment Group
- Wilson Wetlands Action Group
- Canning River Regional Park Volunteers
- Friends of Queens Park Bushland
- Friends of Paganoni Swamp
- Australian Association for Environmental Education WA Chapter

SUPPORT TO COMMUNITY NRM GROUPS

The SERCUL, through Austcover who provide the Community Environment Insurance Program, provides a lower cost Public Liability Insurance Policy to nine 'Friends of' SERCUL member groups, to enable them to continue to operate within public land. Each group holds an independent policy coordinated by SERCUL. The cost of each policy is \$120 per annum. Some Local Governments refund these costs to SERCUL for which we are very grateful.

SERCUL supports community NRM groups in our region through hosting web pages for 14 groups on the SERCUL website. A new web page for the Friends of Booragoon and Blue Gum Lakes was created this year. Community group events and work days are also advertised on the SERCUL website on the Events Calendar, on the SERCUL Facebook page and in SERCUL newsletters.

Community NRM groups including the Friends of Brixton Street Wetlands, Friends of Mary Carroll Wetland, Armadale Gosnells Landcare Group and the Canning River Residents Environment Protection Association also regularly borrow planting and event equipment.

DRAINAGE NUTRIENT INTERVENTION PROGRAM

LIEGE STREET WETLAND

*Coordinated by Brett Kuhlmann
Location—Carden Drive, Cannington*

PROJECT OVERVIEW

Sedge beds within the wetland continue to re-establish following the extensive maintenance program in 2012. At that time, maintenance involved the removal of accumulated pyritic sediment throughout the wetland and the alteration of the bed levels to establish a wet and dry cycle within parts of the wetland.

KEY ACHIEVEMENTS

Weed management around the wetland was a focus during this period to enable the existing sedge stands to expand. *Bacopia monieri* continues to establish around the open edges of the wetland, restricting the growth of some of the sedge species. Couch grass and woody weeds have also been targeted across the wetland.

PLANTS INSTALLED - 252

VOLUNTEERS - 2

VOLUNTEER HOURS - 5

VALUE - \$163

*Kindly funded by the Swan River Trust,
managed in partnership with the City
of Canning, Water Corporation and the
Department of Parks and Wildlife*

WHARF STREET WETLAND

*Coordinated by Brett Kuhlmann
Location—City of Canning
administration centre parkland*

PROJECT OVERVIEW

Revegetation of the subsurface flow wetlands was the main focus of this project over the past year. The subsurface flow wetlands form a vital part of the treatment train approach within this wetland system.

KEY ACHIEVEMENTS

The subsurface flow wetlands are essentially large laterite gravel pits. These areas were mulched to reduce the radiant heat during summer and improve the establishment of vegetation within the subsurface flow wetlands. Woody weeds were targeted around the wetlands.

PLANTS INSTALLED - 400

VOLUNTEERS - 34

VOLUNTEER HOURS - 218

VALUE - \$7092

*Kindly funded by the Swan River Trust,
managed in partnership with the City
of Canning, Water Corporation and the
Department of Parks and Wildlife*

ANVIL WAY WETLAND

*Coordinated by Brett Kuhlmann
Location—Anvil Way, Welshpool*

PROJECT OVERVIEW

The Anvil Way Wetland and living stream were established in 2010. This project is in a monitoring and maintenance phase while the wetland establishes to see how well it performs.

KEY ACHIEVEMENTS

Vegetation management is a key to the ongoing establishment of this wetland. Some of the more vigorously growing species required management during the last year. Effort was made to remove Typha, Persicaria and *Schoenoplectus validus* from various parts of the system to enable the wetland to perform optimally.

VOLUNTEERS - 59

VOLUNTEER HOURS - 334

VALUE - \$10 865

*Kindly funded by the City of Canning,
managed in partnership with the Swan
River Trust and Water Corporation*

MACROINVERTEBRATES STUDY

*Coordinated by Brett Kuhlmann,
Monica Estrada and Dr. Rose Weerasinghe
Location—Liege St, Wharf St and
Anvil Way Wetlands*

PROJECT OVERVIEW

The purpose of the project was to provide data on aquatic macroinvertebrates that, in conjunction with related data on vegetation and water quality, can be used as a basis for assessing the ecological benefit of restoring or recreating wetland and riparian habitats within a degraded urban drainage system.

When scoping this study, an assumption was made that the macroinvertebrate community composition would directly reflect an improvement in ecological health resulting from the establishment of the constructed wetlands. It was expected that when comparing the unmodified or preconstruction conditions to that of the established habitat within the three constructed wetlands, an obvious trend would be seen. The expectation was that with the improvement in habitat value and water quality, there would also be an associated improvement in the macroinvertebrate community in diversity, abundance and their pollution sensitivity rating. The results of the study were not so prescriptive and no clear relationship between increasing habitat value, water quality improvement and the macroinvertebrate assemblage could be seen.

KEY ACHIEVEMENTS

We felt that the outcome could not be left without greater analysis and consideration. An assessment of the available data was undertaken to see if a greater understanding of the interactions within these systems could be achieved. In analysing the results of this study and other available data, we believe that a significant driver of the macroinvertebrate composition within these systems was not a part of the initial assumption. The results of this study indicated the potential for predation by *Gambusia* to be a significant driver of the macroinvertebrate composition within these systems. This influence appears to be a more significant driver of macroinvertebrate composition than the improvements in water quality or the habitat value of the fringing vegetation.

*Kindly funded by the Swan River Trust with
in-kind contribution from SERCUL*

CANNING RIVER RESTORATION

Coordinated by Matt Grimbly

Location—along the Canning River at Kent Street, Wilson; Nicholson Road, Langford; Yule Brook, Beckenham; and Goolamrup Reserve, Kelmscott

PROJECT OVERVIEW

These restoration sites along the Canning River are progressing well with native vegetation establishing in the place of weeds that were present prior to 2010 when the projects began.

KEY ACHIEVEMENTS

Volunteers have installed 15 000 plants at these revegetation projects and weed control has continued to allow the native seedlings to establish.

PLANTS INSTALLED - 15 000

VOLUNTEERS - 115

VOLUNTEER HOURS - 500

VALUE - \$16 265

Kindly funded by State NRM Community Grants

CANNING RIVER RESTORATION PROJECT

CANNING RIVER REGIONAL PARK POST FIRE RESTORATION

Coordinated by Daniel Millea

Location—Canning River Regional Park, Ferndale

PROJECT OVERVIEW

This project continues to see excellent results since the fire in 2011. There has been a strong survival rate of *Melaleuca raphiophylla* and *Eucalyptus rudis*. Replanting of understory species such as *Baumea juncea* and *Juncus kraussii* has since taken place. This will provide excellent understory which did not respond well to the 2011 fire. Continued weed control is being undertaken to ensure the project continues to see excellent results.

KEY ACHIEVEMENTS

Ninety per cent plant survival rate of *Juncus kraussii* plantings.

PLANTS INSTALLED - 6740

VOLUNTEERS - 152

VOLUNTEER HOURS - 564

VALUE - \$18 347

Kindly funded by the Swan River Trust and the Swan Alcoa Landcare Program

MARMOT WAY RESTORATION

Coordinated by Daniel Millea

Location—Canning River Regional Park, Marmot Way, Ferndale

PROJECT OVERVIEW

The purpose of the project is to increase native understory in the Marmot Way restoration site which was slower to respond following a 2011 fire. This in turn is hoped to increase the flora/fauna species biodiversity in the area.

The project is aiming to create a healthy corridor for local fauna and flora. With the dense planting of local sedges it is hoped that this will reduce weed species.

KEY ACHIEVEMENTS

One hundred per cent success rate of *Juncus kraussii* plantings have been recorded from last year's planting.

PLANTS INSTALLED - 4000

VOLUNTEERS - 65

VOLUNTEER HOURS - 293

VALUE - \$9548

Kindly funded by State NRM Program



Work for the Dole team working at the Canning River Restoration sites

YULE BROOK AND BECKENHAM OPEN SPACE

BOWRA AND O'DEA MEN OF THE TREES MEMORIAL GROVES

*Coordinated by John Maliunas
and Tracy Evans*

Weed management has been carried out in the previous months leading up to the planting season. Problem weeds targeted include Paterson's Curse and the very prickly Caltrop, as well as other broadleaf and grassy weeds. Selective underpruning of the screen has allowed better access for visitors. Thank you to the volunteers who helped install the native plants during this season.

PLANTS INSTALLED - 1740

VOLUNTEERS - 30

VOLUNTEER HOURS - 140

VALUE - \$4554

*Kindly funded by Bowra & O'Dea,
Men of the Trees and the Western
Australian Planning Commission*

CANNING RIVER BIODIVERSITY PROJECT

Coordinated by Tracy Evans

Location—Canning River, Beckenham

The Federally funded Community Environment Grant provided the opportunity to improve the biodiversity of the Canning River floodplain, located at the Beckenham Open Space. Weed management initially focused on the removal of woody weeds such as Brazilian pepper tree and *Acacia longifolia*. Broad leaf weeds, such as Paterson's Curse and Prickly Lettuce, as well as grasses, such as couch and rye were successfully treated before the planting season. With more than 12 groups volunteering their efforts, we successfully managed to install all plants by October.

PLANTS INSTALLED - 12 179

VOLUNTEERS - 204

VOLUNTEER HOURS - 645.5

VALUE - \$20 998

*Kindly funded by the Australian
Government's Caring for our Country
Program*

YULE BROOK CONFLUENCE PROJECT

Coordinated by Tracy Evans

The site is located in the Beckenham Open Space where the Yule Brook meets the Canning River. The Yule Brook Confluence Project is an area of approximately four hectares with the aim of improving biodiversity and water quality entering the brook and river. Extensive weed management was carried out, tackling a variety of weeds over the seasons. Willows were treated and removed, as was Taro. Nut grasses are a particular problem and required considerable time for treatment. Both hand weeding and chemical methods of control were used. Other weeds of note are the blackberry (*Rubus*), Paterson's Curse, *Fumaria* and *Typha* which were all managed with both chemical and manual methods. Planting of native sedges and other smaller plants along the Yule Brook was kindly done by several small volunteer groups.

PLANTS INSTALLED - 2000

VOLUNTEERS - 29

VOLUNTEER HOURS - 132

VALUE - \$4294

*Kindly funded by Swan Alcoa Landcare
Program (SALP)*

Planting at Yule Brook Confluence with South Fremantle SHS students 2014

Yule Brook Confluence 2014

BRENTWOOD MAIN DRAIN PROJECT

BRENTWOOD LIVING STREAM KAALITJ NGORT KOONDAAM - DRAGONFLY DREAMING

Coordinated by Glen Byleveld

PROJECT OVERVIEW

The Brentwood Living Stream project aims to improve water quality, natural diversity and the visual amenity of Bateman Reserve in the Bull Creek catchment. The project involves the conversion of a piped main drain into a living stream.

KEY ACHIEVEMENTS

Site assessments and designs were complete in May 2015. Construction commenced in June 2015. Members of the Yelakitj Moort Nyungar Association assisted in site interpretation and collection of cultural materials. Elder, Marie Taylor, renamed the site Kaalitj Ngort Koondaam (Dragonfly Dreaming) due to the abundance of dragonflies onsite during her first visit.



Brentwood site before construction



After removal of vegetation



During earthwork construction of the channel

Kindly funded by the Australian Government's Caring for our Country Program, Swan River Trust, Main Roads WA, Water Corporation and the City of Melville

AQUATIC WEED MANAGEMENT

AMAZON FROGBIT CONTROL

Coordinated by Brett Kuhlmann

Location—Bannister Creek, Lynwood and Ferndale

PROJECT OVERVIEW

Amazon Frogbit (*Limnobium laevigatum*) was found in Bannister Creek in March 2014. At the time of its discovery it had spread over approximately one kilometre of open stormwater drains and through the revegetated living stream. A very intensive effort was undertaken by SERCUL staff and volunteers and the project partners to contain and remove the plant material. It was a race against time with the potential for the first rain events to distribute fragments of the plant along the length of Bannister Creek and into the Canning River. We could not be sure of our success until the following summer.

KEY ACHIEVEMENTS

During the summer of 2014-15, each of the stakeholders participated in monthly surveys of the entire length of Bannister Creek and around its confluence with the Canning River to determine if any fragments of plant material were missed. It would only take one piece to start a new infestation. The efforts of all of the stakeholders was very well rewarded as there was no further Amazon Frogbit found along Bannister Creek. This is a fantastic outcome for an infestation which had the potential to have significant ecological and financial implications if this plant had the opportunity to flower and set seed. The hundreds of tiny seeds are viable for three years.

It is a warning for all waterway managers to be vigilant about the potential for exotic aquatic weeds entering our systems.

Managed in partnership with the Swan River Trust, City of Canning, Water Corporation and the Department of Parks and Wildlife



OTHER PROJECTS

TOM BATEMAN WETLAND INLET RESTORATION

Coordinated by Glen Byleveld

Location—corner of Roe Highway and Nicholson Road, Thornlie

PROJECT OVERVIEW

This project is aimed at improving the amenity, habitat value and water treatment capability of the inlet pond within the Tom Bateman Wetland. The inlet pond had accumulated extensive amounts of sediment since the wetland was constructed in 2003.

Woody weed and exotic grasses dominated and significant amounts of polystyrene beads and other gross litter items had accumulated around the edge of the basin.

KEY ACHIEVEMENTS

The inlet basin was revegetated following extensive earthworks. Maintenance and weed control is ongoing at this site.

PLANTS INSTALLED - 18 000

VOLUNTEERS - 10

VOLUNTEER HOURS - 200

VALUE - \$6506

Kindly funded by the Australian Government's Caring for our Country Program and the Swan River Trust

SERPENTINE RIVER FLOODPLAIN RESTORATION

Coordinated by Glen Byleveld

Location—Karnup

PROJECT OVERVIEW

This project involves revegetation of the Lower Serpentine River floodplain adjacent to the Anstey Road Wetlands in the City of Rockingham.

KEY ACHIEVEMENTS

Ongoing weed control and revegetation has been successful on the river floodplain. Infill planting and fence line repairs were complete in 2014 to repair damaged caused by cattle accessing the site.

PLANTS INSTALLED - 10 000

Ha WEED CONTROL - 6

FENCING - 300 m

Kindly funded by Alcoa Foundation

OTHER PROJECTS

WIRELESS HILL PARK

Coordinated by Tracy Evans and John Maliunas

PROJECT OVERVIEW

Supported by the Friends of Group, we have been fortunate to work at the park in Melville since 2010. This has been with the aim of hand weeding the Perennial Veldt Grass within a section known as 'the Wildflower Walk'. Other weeds targeted include gladioli, freesias, lachenalia and Geraldton Wax. The area has seen an increase in native plants including native spear grass and kangaroo paws. The abundance of orchids is also now more evident during winter with the absence of weeds.

Thank you to Margaret Matthews, Kate Creed and the Friends of Wireless Hill Park for your continued support.

Kindly funded by Swan Alcoa Landcare Program, Caring for our Country Community Action Grants and the City of Melville

BICKLEY BROOK RESERVOIR

Coordinated by Tracy Evans

The site is located at the Bickley Outdoor Recreation Camp, Orange Grove. The aim was to target weeds including Watsonia, Blackberry, Fig trees and Bridal Creeper. Planting was installed along the reservoir shoreline as well as upstream. Our thanks go to the terrific children of Orange Grove Primary School and the amazing Conservation Volunteers Australia for all their care with planting.

PLANTS INSTALLED - 2400

VOLUNTEERS - 52

VOLUNTEER HOURS - 182

VALUE - \$5937

Kindly funded by State NRM Program

NICHOLSON ROAD BUSHLAND

Coordinated by Daniel Millea

Location—Langford

PROJECT OVERVIEW

The aim of this project is to create an effective wildlife corridor enabling fauna to traverse safely between the Tom Bateman Wetland (Thornlie) and Nicholson Road Bushland (Langford) via the tunnel under Roe Highway. It also aims to control the exotic grasses invading the vegetation stands.

KEY ACHIEVEMENTS

Revegetation of the corridor with provenance plant stock (*Meeboldina cana*) was undertaken by SERCUL Volunteers and Bentley Health Unit volunteers.

Weed control of Perennial Veldt Grass and broadleaf weeds undertaken by CVA and SERCUL volunteers.

PLANTS INSTALLED - 1000

VOLUNTEERS - 35

VOLUNTEER HOURS - 80

VALUE - \$2602

Kindly funded by State NRM Program and Western Australian Planning Commission



Sunrise at Bibra Lake by Daniel Millea

ENVIRONMENTAL SERVICES

SERCUL ENVIRONMENTAL SERVICES PROGRAM

SERCUL's Environmental Services has continued to grow over the last 12 months. We have continued to provide high-quality weed control and bushland restoration services to a range of clients from Local and State Government agencies, landcare and friends of groups and the private sector.

Projects include expert weed control in environmentally-sensitive areas, revegetation of large areas with native species, fencing and erosion control.

SERCUL's clients over the past year have included the City's of Armadale, Gosnells and South Perth, Water Corporation, Landcorp, Armadale Gosnells Landcare Group, Bannister Creek Catchment Group, Wilson Wetlands Action Group, Suez Environment, Auscarbon and private landholders.



Environmental Services are undertaken on a fee for service basis. The specific intent of this delivery model is to generate income to support our Community delivery model.

It is recognised that in an ever-tightening and diminishing funding environment there is limited external financial support provided to this area. We consider community delivery as an important aspect of both landscape change and human change.

GIBBS ROAD RESERVE POST FIRE WEED CONTROL

Client: City of Armadale

Location—Gibbs Road Reserve, City of Armadale

After burning in a bushfire in January 2014 SERCUL has been engaged to control the weeds in this beautiful piece of highly diverse Banksia Woodland in Forrestdale.

Initially weed control focussed on grass selective spraying of perennial veldt grass followed later by control of pigface and other broadleaf weeds using Roundup. It was essential that weed control was very thorough on this project to make the most of the opportunity presented by fire to reduce the abundance of these transformer weed species.

There has been a noted reduction in perennial veldt grass in the second season following the fire and the bushland is recovering strongly with great recruitment of native species across the site.

LAKE COOGEE RESTORATION

Client: Landcorp

Location—Lake Coogee, City of Cockburn

After initial planting of 58 000 plants in June 2014 we have completed infill planting on this project with 13 000 tubestock installed in May 2015. Plant establishment has been very strong with coverage of native vegetation across the site providing great habitat for resident quendas and an abundance of bird life. Many of the Tuarts are now over two metres tall and will provide excellent habitat in years to come including excellent foraging habitat for Carnaby's Black-Cockatoos.

Weed control has been ongoing since initial planting and has really helped the revegetation to establish. The project is on target for handover in December 2015.

Spider Orchid at Gibbs Road



BANNISTER CREEK CATCHMENT GROUP

Coordinated by Amy Warner

BANNISTER CREEK

Location—Lynwood, Ferndale and Riverton

PROJECT OVERVIEW

The Bannister Creek Catchment Group (BCCG) has two SALP funded projects along Bannister Creek. The Understorey project runs from the top end of Bywood Way (the washing machine) down to the weir at Acacia Place with the main aim being to establish ground cover and low to mid-storey plant species.

The second SALP funded project—removal of threatening weeds from Bannister Creek (Ferndale) is between Metcalfe Road and Adenia Bridge. The main aim of this project is to combat a variety of aggressive weeds such as Blackberry and Nutgrass that threaten the survival of local native plants.

The BCCG has also received a 25th Anniversary Landcare grant for the Urban Waterways Renewal project site. This project aims to infill local native plants alongside the creek line and continue weed control in the area.

KEY ACHIEVEMENTS

The BCCG and the City of Canning co-hosted a Bushcare's Major Day Out event at the Ferndale site in September 2014. Over 1400 sedges were installed which will help prevent weed reinvasion following intensive weed control.

This year, 88 Lynwood Senior High School students from the Intensive English Centre participated in Clean Up Australia Day at Bannister Creek.

Many thanks to the students and volunteers and the City of Canning for their continual support.

PLANTS INSTALLED - 3844

VOLUNTEERS - 501

VOLUNTEER HOURS - 1136

VALUE - \$36 954

HAWKESBURY-VELLGROVE ECOLOGICAL CORRIDOR

Location—Willetton and Parkwood

PROJECT OVERVIEW

The Vellgrove Ecological Corridor Project site is located in Parkwood and bordered by Vellgrove Avenue and Roe Highway. This site is in its eighth year of restoration and has seen great success in establishing vegetation.

KEY ACHIEVEMENTS

In 2013-14, nearly 50 well-established feral casuarinas were removed from the Hawkesbury-Vellgrove sites which has assisted in reducing the potential for self-seeded feral Casuarinas on site and further down the system. As many of these trees were congregated in one area, their removal provided an ideal location for planting.

This year 47 staff and family members from the Wood Group planted more than 1000 plants on site. It was a great morning despite the rain. The BCCG would like to extend their thanks to the Wood Group for the help on site and for their generous donation.

Students from Mel Maria Primary School and Yule Brook College also undertook planting at the site this year. A big thank you to both students and staff for their tremendous help.

PLANTS INSTALLED - 2720

VOLUNTEERS - 185

VOLUNTEER HOURS - 689

VALUE - \$22 413

Kindly funded by Swan Alcoa Landcare Program and the City of Canning



Green Army removing Typha from Bannister Creek



Lynwood Senior High School students working in the creek



Wood Group planting at Vellgrove



BULL CREEK CATCHMENT

Coordinated by Dan Friesen

Location—Bull Creek Catchment, City of Melville

PROJECT OVERVIEW

SERCUL is working directly with the Friends of Bull Creek Catchment, the Rossmoyne Senior High School Bush Rangers and the City of Melville. The project aims to protect and enhance the biodiversity of Bull Creek while addressing and improving the water quality.

KEY ACHIEVEMENTS

- Successfully attracted \$216 775 in grant funding from SALP, State NRM 25th Anniversary Landcare Grants and the Swan-Canning River Restoration Program.
- The Friends of Group continues to attract new members and meets twice a month providing ongoing weed management and planting labour.
- Improved coordination and engagement with the City of Melville.
- Community planting event attracted approximately 50 community members and successfully planted more than 7000 plants.
- Continued engagement from the Rossmoyne Senior High School Bush Rangers who undertake planting, weed management and water quality monitoring.
- Federal Member, Dennis Jensen, visited Bull Creek and met with the Bush Rangers.
- Previously revegetated sites continue to flourish requiring minimal weed control maintenance due to the high success rate and density of planting efforts.
- The restoration of Bull Creek has an air of enthusiasm, pride and passion. Wendy Corrick, convenor of the Friends of Group and leader of the Rossmoyne Senior High School Bush Rangers, has continued to be an outstanding cornerstone to the foundation of the Bull Creek restoration efforts.
- WA Wildflower Society created a herbarium for the Friends of Group.

PLANTS INSTALLED – 18 000

VOLUNTEER HOURS – 1240

VALUE – \$40 337

Kindly funded by Swan Alcoa Landcare Program, State NRM 25th Anniversary Landcare Grants and supported by the City of Melville



Bush Rangers planting in Bull Creek Reserve



Friends of Group after a planting day



BOORAGOON AND BLUE GUM LAKES

Coordinated by Dan Friesen

Location—Booragoon and Blue Gum Lakes, City of Melville

BOORAGOON LAKE

PROJECT OVERVIEW

SERCUL is working with the Friends of Booragoon and Blue Gum Lakes to undertake Japanese Pepper removal and the protection and enhancement of Booragoon Lake's biodiversity.

The Friends of Group are managing weeds and planting native species along a section of the lake with support from SERCUL. SERCUL is managing the Japanese Peppers and all chemical weed control.

KEY ACHIEVEMENTS

- Successfully attracted continued funding support from State NRM.
- Continued management of Japanese Peppers expanding the control area in partnership with the City of Melville's wetland crew.
- Increased engagement and coordination from the City of Melville.
- Hosted two community planting events.
- Welcome to Country from Trevor Walley for one community planting event.
- MLA, Matt Taylor, visited Booragoon Lake participating in our other community planting event.
- Continued engagement from the Winthrop/Bateman scouts.

BLUE GUM LAKE

PROJECT OVERVIEW

Blue Gum Lake is an expression of the water table and as such dries out seasonally. The lake's water level was artificially regulated for many years and only in recent years has returned to mimic a more natural cycle. Now that the lake dries out seasonally, it has provided an opportunity to revegetate with plants that will improve water quality, provide habitat, shade and protect the lake. Currently the lake's surrounding vegetation and water quality is extremely poor; consistently showing test results well below pH levels suitable for aquatic life. This project aims to remove the couch and other various weeds that currently dominate the lake's vegetation and replace them with species native to the lake improving habitat and water quality.

KEY ACHIEVEMENTS

- Successfully attracted continued funding support from SALP.
- Increased engagement from the City of Melville.
- High success rate with wetland revegetation.
- Continued expansion of weed control area.
- Continued engagement from the Murdoch TAFE students of environmental monitoring.

PLANTS INSTALLED - 15 500

VOLUNTEER HOURS - 608

VALUE - \$19 778

Kindly funded by Swan Alcoa Landcare Program, State NRM Program and supported by the City of Melville



ARMADALE GOSNELLS LANDCARE GROUP

*Coordinated by
Community Landcare Coordinator: Jen Francis
Community Landcare Officer: Shane Hunter*

Armadaale Gosnells Landcare Group (AGLG) cares for the Upper Canning, Southern and Wungong Rivers and their tributaries. In the 2014-2015 financial year, AGLG continued their caretaker role of 23 sites within the City of Gosnells and the City of Armadale. This included handing back one site to each Local Government and taking on a new site within each jurisdiction. In 2014-2015, AGLG was fortunate to welcome two new committee members and continue work with some very dedicated friends groups and passionate members of the community. A total of 57 community work days were held and AGLG were able to engage 10 schools in tree planting activities. AGLG also hosted or were present at six community workshops and events, including the Minnawarra Festival, Kelmscott Show and Gardenwise workshops.

A key achievement for AGLG in the past year was for our organisation to be the only Perth metro project funded under the 20 Million Trees section of the Australian Government's National Landcare Program. Two projects commenced, one covering three sites in the City of Gosnells and one at Fancote Park in the City of Armadale. The Fancote Park project builds on restoration work currently undertaken by AGLG on the Canning River foreshore. Work began in 2005 at Orlando Street Bridge, behind Kelmscott Primary School. AGLG has worked with the school, the local friends group, the City of Armadale and the Swan River Trust over this time to coordinate weed control and replace invasive species with local native species. This has increased the biodiversity value of the site, increased the number of native plant species and

provided food and habitat for native fauna. Planting along the riverbanks and within the river has also helped to prevent erosion and improve water quality through the uptake of nutrients by sedges. The new Australian Government funded project will result in the restored river corridor being extended to a continuous length of 1.7 km along the Canning River.

PLANTS INSTALLED - 41 377
VOLUNTEERS - 1565
VOLUNTEER HOURS - 3204.25
VALUE - \$104 234

Kindly funded by the City of Armadale, City of Gosnells, Australian Government's National Landcare Program, Swan River Trust, Alcoa, Western Australian Government's State NRM Program, Perth Region NRM, Western Australian Planning Commission and Cedar Woods Properties Limited



Bank West volunteers planting at Fancote Park



National Tree Day at Fancote Park

WATER QUALITY MONITORING

WATER QUALITY PARTNERSHIP PROJECT

Coordinated by Monica Estrada, Alice Atkinson and Ditte Strebel

PROJECT OVERVIEW

This project has been supported by the Local Government Authorities (LGAs) involved, the Department of Water (DoW), Whiteman Park (Western Australia Planning Commission) and by the Swan River Trust (SRT). The project has the aim to promote a cooperative approach to water quality monitoring (WQM) across the Perth Region. The main role of SERCUL, in conjunction with the Aquatic Sciences Branch of the Department of Water is to: assist stakeholders to assess their water quality data requirements; provide assistance in the preparation of sampling and analysis plans; undertake sampling; and write annual reports.

KEY ACHIEVEMENTS

- Five water quality monitoring programs conducted: Bennett Brook catchment, Bull Creek catchment and City of Melville Lakes, Bull Creek East catchment, Bannister Creek catchment and City of South Perth catchments. The annual reports for South Perth catchments and Bennett Brook have been prepared and the reports for the three remaining catchments are under preparation.
- Nine partnerships with LGAs including City of Bayswater, City of Melville, City of Swan, City of South Perth, City of Canning and other agencies Whiteman Park, DoW and SRT.
- The data has been providing information for the Swan River Trust and for the Department of Water calibration models.
- Assistance to the Department of Water in the monthly water and sediment quality sampling at Drainage Nutrient Intervention Project (DNIP) sites.
- Budget for five Sampling Analysis Plans (SAPs) to be developed for 2015-2016 were prepared (Bennett Brook, Bull Creek Catchment - City of Canning side, City of Melville Lakes and Bull Creek catchment, City of South Perth catchments and Bannister Creek catchment). Their respective SAPs are under revision.

- Water quality data analysis for DNIP projects (Anvil, Liege and Wharf) as a part of the macroinvertebrates monitoring and Tom Bateman Reserve for the Management Plan.
- By recommendation of the DER, installation of TPS 90FLMV passive sampler (logs physical parameters) at Whaleback Lake inlet (WB02) in March 2015 to monitor pH fluctuations in an effort to gather more information about surfactant pollutant events occurring in the Bannister Creek drainage system. City of Canning provided \$10 000 toward the equipment and monitoring costs. Monthly data retrieval and equipment cleaning and recalibration, is ongoing for a period of one year and the report is expected to be completed by the end of 2015-16 financial period.

CATCHMENTS - 9

SAMPLING EVENTS - 38

SAMPLE SITES - 117

**WATER SAMPLES
COLLECTED - 448**

**SEDIMENT SAMPLES
COLLECTED - 62**

**MACROPHYTE SAMPLES
COLLECTED - 24**

VALUE - \$277 934



Dominic (DoW) sampling Piney Lakes, City of Melville

Kindly funded by Swan River Trust; Department of Water; Cities of South Perth, Bayswater, Swan, Melville and Canning, Whiteman Park (WAPC) and Armadale Gosnells Landcare Group (AGLG)

MOSQUITO RESEARCH

MANAGING MOSQUITOES WITH RESTORATION

Coordinated by Dr. Rose Weerasinghe, Glen Byleveld, Julie Robert and Brett Kuhlmann

PROJECT OVERVIEW

This project aims to develop an Integrated Mosquito Management approach in the Perth Region. Urban wetlands, tidal flats and marshes bring people and mosquitoes together and keeping a balance between these habitat functions and public health has been one of the most challenging tasks that restoration managers deal with on a regular basis. Current mosquito management techniques are heavily weighted to the use of pesticides as a management option. While we recognise the role of chemical control we also recognised its limitations. Many chemicals currently used in mosquito control have a narrower spectrum and are less toxic than those used in the past, but their use still has significant impacts on the aquatic fauna that live and feed in aquatic habitats.

The project involved the review of local, national and international information and developed research proposals to better understand mosquitoes and ecologically sound mosquito management. We also liaised with local government and the Department of Health to assess current management techniques.

KEY ACHIEVEMENTS

1. Prepared a research plan to evaluate habitat rehabilitation and modification for saltmarsh mosquito management in the Canning River Regional Park tidal flats. This proposal will be done in conjunction with Curtin University. The project aims to investigate the suitability and effectiveness of low cost and low maintenance physical changes to habitats to control saltmarsh mosquitoes, which should reduce the reliance on pesticide use. The site will be monitored to assess if this is a suitable approach to reduce mosquito breeding and the effects of minor habitat alteration on tidal flats in the Canning River Regional Park.

2. SERCUL initiated the Yule Brook and Beckenham Open Space wetlands monitoring program with TAFE and University students to measure physical and ecological parameters to understand mosquito and predator composition/relationship in temporary wetlands. First stage of the analysis is completed and the monitoring will be continued.
3. Identified management options to overcome challenges in wetland design/restoration and mosquito management.
4. Attended the Australian Mosquito Conference and the Annual Contiguous Local Authority Group (CLAG) Forum.
5. Developed the Mozzie Wise Education Program (see education section p 13).

Kindly funded by SERCUL



Identifying macroinvertebrates



Mosquito larvae monitoring

AUDITOR'S REPORT

W F DAWSON & ASSOCIATES Chartered Accountants



INDEPENDENT AUDITOR'S REPORT TO THE MEMBERS OF SOUTH EAST REGIONAL CENTRE FOR URBAN LAND CARE INC (SERCUL) Scope

I have audited the financial statements of SERCUL, which has been classified as a non general purpose account, for the year ended 30th June 2015.

The Association's committee is responsible for the preparation and presentation of the financial statements. The information the statements contain and the accounting policies used are determined by the committee so as to meet the needs of the members. I have conducted an independent audit of these accounts in order to express an opinion on them to the members.

I disclaim any assumption of responsibility, for any reliance on this report or these accounts, to any person other than the members, or for any other purpose other than for which they were prepared.

My audit has been conducted in accordance with Australian Auditing Standards to provide reasonable assurance as to whether these accounts are free of material misstatements. My audit procedures include an examination, on a test basis, of evidence supporting the amounts shown in these accounts. These tests have been undertaken to form an opinion as to whether, in all material respects, these accounts are fairly presented.

My audit opinion expressed in this report has been formed on this basis.

Audit Opinion

In my opinion, the financial statements present fairly the operating results of SERCUL for the 2014/2015 financial year and its financial position at 30th June 2015.

Signature of Auditor:
Name of Auditor: **WARREN FRANCIS DAWSON**
W F DAWSON AND ASSOCIATES
PO BOX 2063
CHURCHLANDS WA 6018

14th August 2015

Principal: Warren F Dawson (CA) (Aust)
Level 2, Suite 17, 50 Hamer Road, COBORNE (WA) (Aust)
Contact: (08) 9448 2000, (08) 9448 2015, (08) 9448 2016, (08) 9448 2017
Fax: (08) 9448 2018
Email: info@wfdawson.com.au
Company limited by a private company under the Companies Act 1993

FINANCIAL SUMMARY

TWELVE-YEAR PROGRESSION OF ACTUAL CASHFLOW 2003-2015

The 2014-2015 financial year has seen a predicted reduction in income of 28% from \$3 698 770 in 2013-2014 to \$2 668 894. The annual expenditure also has a predicted reduction of 14% from \$3 678 634 in 2013-2014 to \$3 154 813. This reduction in income and expenses is due to our organisation strengthening the SERCUL environmental services, relying less on grant-funded projects and tightening up spending to continue building a more sustainable landcare business model.

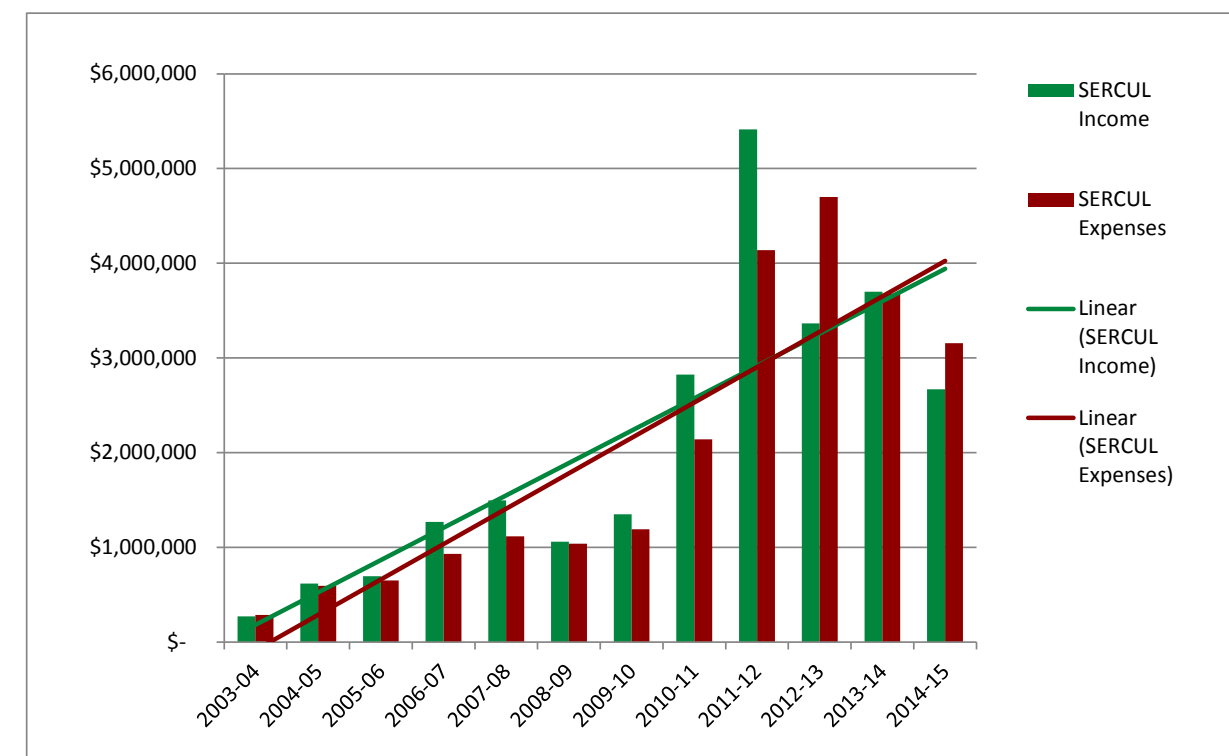
The expenses of SERCUL reflect that we have spent more funds than we have received during 2014-2015 (\$479 451) but this is a result of SERCUL required to pay in advance for expenses incurred in the delivery of some environmental services prior to receiving payment.

Analysis of how the SERCUL income was derived in 2014-2015 reveals that 72.2% of income received was derived from the delivery of environmental services, 17.8% from partnerships and 10% came from grants. In the 2012-

2013 and 2013-2014 years, the income from environmental services was 71% and grants 29%. The increase in environmental services for the 2014-2015 year showed the achievement of the executive and management team goal to grow this funding area year by year.

An environmental service is defined as funds derived from tenders, quotes and delivery of services not provided within a grant and where community and volunteers are not expected to be involved. Grants are purely those funds that the SERCUL applies for through a grant process.

The shift toward the delivery of environmental services is essential for the SERCUL organisation to remain sustainable and to not be reliant on politically-driven environmental funding programs that do not sufficiently provide long-term employee and environmental security.



FINANCIAL REPORT

1:21 PM
24/08/15
Accrual Basis

South East Regional Centre for Urban Landcare
Balance Sheet
As of June 30, 2015

	Jun 30, 15
ASSETS	
Current Assets	
Chequing/Savings	
Bendigo Term Inv. 136641388	354,364
Bendigo working a/c 136248010	729,840
BendigoTerm Inv. 141340877	513,315
Capacity Builder Accou143399459	34
Petty Cash	164
Petty cash - PAP	31
Public Env.Fund 147844088	198
Total Chequing/Savings	1,597,946
Accounts Receivable	
Accounts Receivable	603,066
Total Accounts Receivable	603,066
Total Current Assets	2,201,011
Fixed Assets	
Computer Equipment	
Prov.for depn Computer equip.	-94,657
Computer Equipment - Other	100,327
Total Computer Equipment	5,670
Motor Vehicle at cost	
Prov. for depn Motor Vehicle	-145,639
Motor Vehicle at cost - Other	154,739
Total Motor Vehicle at cost	9,100
Office Equipment	
Prov for depn Office Equipment	-63,309
Office Equipment - Other	70,358
Total Office Equipment	7,049
Plant & Equipment	
Prov for depn Plant & Equipment	-108,738
Plant & Equipment - Other	156,066
Total Plant & Equipment	47,328
Total Fixed Assets	69,147
TOTAL ASSETS	2,270,158
LIABILITIES	
Current Liabilities	
Other Current Liabilities	
Grants in advance	656,799
Payroll Liabilities	
Superannuation Liability	
AMP Flexible Superannuation	848
ANZ Superadvantage	1,164
Australian Ethical Retail Super	5,083
AustralianSuper	3,488
BT Superannuation	1,761
CBUS	615
Essential Super	821
Future Super	1,353
Host Plus	2,585
MLC MasterKey Superannuation	1,138
Rest Super	868
Telstra Super	633
Tower	3,199
UniSuper	1,775
WALGSP	2,653
Total Superannuation Liability	27,983
Payroll Liabilities - Other	21,289
Total Payroll Liabilities	49,272

FINANCIAL REPORT

1:21 PM
24/08/15
Accrual Basis

South East Regional Centre for Urban Landcare
Balance Sheet
As of June 30, 2015

	Jun 30, 15
Provision for LSL and AL	145,171
Tax Payable	84,687
Total Other Current Liabilities	935,929
Total Current Liabilities	935,929
TOTAL LIABILITIES	935,929
NET ASSETS	1,334,229
EQUITY	
Retained Earnings	1,484,399
Net Income	-150,170
TOTAL EQUITY	1,334,229

FINANCIAL REPORT

9:27 AM


01/09/15

Accrual Basis

South East Regional Centre for Urban Landcare
Profit & Loss
 July 2014 through June 2015

	Jul '14 - Jun 15
Ordinary Income/Expense	
Income	
Administration	177,353.98
Bank Interest-Public Env. Fund	1.44
Community Driven Restoration	77,804.99
DNIP 14-15	23,800.00
Educational Operations	29,912.03
Employment.	1,498,972.26
Environmental Project Operating	84,840.39
Environmental Services	3,664.79
Healthy Rivers 14-15	185,000.00
Mill St Drain-Hydrocotyle	9,000.00
Perth Region NRM 2014	20,000.00
Planning & Construction	26,086.36
Project Management	-31,972.78
Public Environmental Fund	75.00
SCRR-Hydrocotyle Part B	139,080.00
SCRR-Hydrocotyle Part C	71,000.00
SCRRP Bull Creek	76,887.50
Slab Gully 2012-13.	6,052.50
SNRMCA04-Wungong R./Ranford Rd	2,000.00
SRT- Brentwood Living Stream.	182,484.43
SRT-Tom Bateman Res.	33,081.72
Vehicle & Landcare Maintenance	343,298.43
Water Corp. UWR	-29,393.75
Water Quality Partnership	69,145.24
Total Income	2,998,174.53
Gross Profit	2,998,174.53
Expense	
Administration.	222,531.23
ALCOA Foundation Grant-219825.	35,832.50
DECCG12HR Hydrocotyle CRRP	7,291.49
Depreciation Expense	44,302.00
Educational Operations.	16,630.04
Employment-	2,035,672.41
Environmental ProjectOperating.	98,798.99
Environmental Services.	9,401.91
Healthy Rivers 14-15.	39,606.87
Mill St Drain-Hydrocotyl	9,000.00
Planning & Construction.	29,250.00
Project Management.	13,544.01
Slab Gully 2012-13	11,265.00
SNRM 12095-Bickley Brook.	1,640.00
SNRMCA04-Wungong R/Ranford Rd	9,101.07
SRT Brentwood Living Stream	132,305.65
SRT Tom Bateman Res.	48,427.32
Vehicle & Landcare Maintenance.	320,489.21
Water Quality Partnership.	69,723.04
Total Expense	3,154,812.74
Net Ordinary Income	-156,638.21
Other Income/Expense	
Other Expense	
Asset purchases-Computers	-210.00
Asset Purchases - Plant & Equip	-6,258.00
Total Other Expense	-6,468.00
Net Other Income	6,468.00
Net Income	-150,170.21

STATEMENT BY THE MANAGEMENT COMMITTEE



69 Harley Road,
 Beckenham, Western Australia 6107
 Telephone: 08 9458 5664
 Facsimile: 08 9458 5661
 Website: www.sercul.org.au

STATEMENT BY THE MANAGEMENT COMMITTEE
 SOUTH EAST REGIONAL CENTRE FOR URBAN LANDCARE (INC.)

In the opinion of the Members of the Committee;


(a) The accompanying Profit and Loss Statements are drawn up so as to give a true and fair view of the results of the Group for the year ended 30th June 2015.

(b) The accompanying Balance Sheet is drawn up so as to give a true and fair view of the state of affairs of the Group as at the end of that period.


(c) At the date of this statement there are reasonable grounds to believe that the Group will be able to pay its debts as and when they fall due.

The Accounts of the Group have been prepared in accordance with the applicable Australian Accounting Standards.

Signed in accordance with a resolution of the Committee.


 Max Houghton
 Treasurer

Date: 14 September 2015


 Patricia Hart
 Chairperson

Date: 14 September 2015



NEW PROJECTS FOR 2015-2016

SWAN-CANNING RIVER RECOVERY PROGRAM PROJECTS

The Swan-Canning River Recovery Program Projects are a result of proactive local Friends Groups, highlighting their concerns about the Canning River. In January 2015, Minister Hunt announced the Swan-Canning River Recovery (SCRR) Program, a \$1 million commitment to improve the health of the Swan and Canning Rivers.

The program funding, coordinated through Perth NRM, aims to improve the health of the Swan and Canning Rivers by controlling *Hydrocotyle ranunculoides* (Hydrocotyle) and other priority weeds and providing support for direct community action by environmental groups within priority areas. These projects are kindly funded by the Australian Government National Landcare Program.

HYDROCOTYLE MANAGEMENT PROGRAM AND PRIORITY WEEDS

In 1992, Hydrocotyle covered 30% of the open water in the Canning River, between the Nicholson Road Bridge and the Kent Street Weir. Although this major outbreak was reduced, there are still persisting populations of this aquatic weed within the Canning River and its tributaries. The size of these populations surge each summer and require ongoing management. SERCUL proposed a coordinated management approach involving ten stakeholders who are involved in Hydrocotyle management. A representative of each of these stakeholders forms the Hydrocotyle Working Group. A successful bid for funding was put forward by SERCUL on behalf of the Hydrocotyle Working Group, to undertake the management of Hydrocotyle and other priority weeds within this catchment. It is anticipated that the coordinated approach through this program will remove the major barriers to Hydrocotyle management and reduce this weed infestation to an eradicable level.

DIRECT COMMUNITY ACTION

A proposal was put forward by SERCUL to be undertaken in association with five Friends of Groups, three local councils and will include involvement from multiple schools, community associations, corporate groups and community individuals. The seven funded project sites are along the Canning River, its tributaries and stormwater drains entering the river. The project aims to support the existing community groups in their ongoing efforts and to engage the wider community to participate in the health of the Canning River.



ACKNOWLEDGEMENT OF FUNDING PARTNERS

The success of the South East Regional Centre for Urban Landcare's project delivery is a direct result of financial and in-kind contributions from the following Australian Government Departments, WA State Government Departments, Natural

Resource Management Organisations, private businesses, Local Governments and community groups. We would like to acknowledge and sincerely thank you for your assistance over the 2014-2015 year.



THANK YOU

The care and protection of the Natural Resources of the South Region can only happen with the ongoing support of community groups, non-Government organisations, volunteers, Local Government Authorities, State and Australian Government Departments and private business project partners.

The South East Regional Centre for Urban Landcare Inc. committee and staff sincerely thank you all and look forward to continuing our partnerships in 2015-2016 to achieve an even more sustainable approach to Natural Resource Management in Perth, Western Australia.

*Good luck for
2015-2016*



South East Regional Centre for Urban Landcare

69 Horley Road
Beckenham, WA
Ph: (08) 9458 5664
Fax: (08) 9458 5661



www.sercul.org.au

Cover photo: Bibra Lake bushland by Daniel Millea