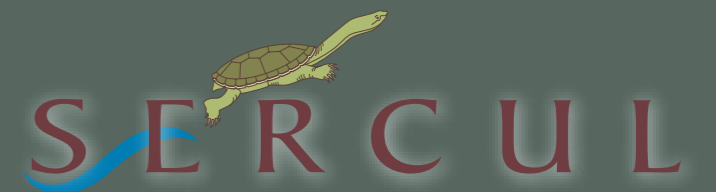


SERCUL

ANNUAL REPORT



South East Regional Centre for Urban Landcare

CONTENTS

Highlights for 2016–2017	3
Achievements for 2016–2017	4
From the Chair–Pat Hart	5
From the CEO–Brett Kuhlmann	6
SERCUL Constitution	7
NRM Organisational Structure in Perth	8
SERCUL Staff	9
SERCUL Committee	10
SERCUL Structure	11
SERCUL NRM Program Areas	12
 Environmental Education	13–17
 Community Capacity	19–26
 Landcare and Restoration	29–40
 Monitoring and Research	41–46
Auditor’s Report	47
Cash Flow Summary	48
Financial Report	49–50
Statement by the Management Committee	51
New Projects for 2017–2018	52
Acknowledgement of Partnerships	53
Thank You	54

HIGHLIGHTS

- Finalist in the National Landcare Awards 2016 in the Australian Government Partnerships with Landcare Award.
- Launched the new and improved SERCUL website in October 2016.
- Horley Road Wetland became a new participant and is now classified in the Healthy Wetlands Habitats Program.

Volunteer Celebration and Life Member Awards

In February 2017 SERCUL held a breakfast to celebrate and recognise all the hard work that volunteers contribute to the restoration of our natural environment. On this day SERCUL's first Life Memberships were presented to Brian Aldrich and a posthumous award to Cam Clay which was presented to his wife Faye Clay by our patron Chris Ferreira.



'Thanks so very much for your fantastic organisation - we got so many plants so quickly into the ground ... it was excellent.'

The kids loved it and it was so fun to see some of the 'loveable rogues' make good by getting a lot done and having huge fun with it.'

Fiona Marr
Science and Sustainability Teacher
Lynwood Senior High School



'CRREPA would like to thank you again for your help in our successful grant application to Lotterywest for our new tools for weeding, banners, work signs and insulated water container.'

The tools have made a huge difference to our members, making it much more efficient and easier to remove weeds. Having our own banners and work signs with our name and logo identifying our group while we work, has created great interest, support and attracted new members to our group. We have also been able to use these in our educational displays. The insulated water container has been a safe and effective server for our group gatherings after weeding for a morning tea and community conversation.'

Sallie Bryant
CRREPA - Canning River Residents Environment Protection Association



 **203 816**
Plants installed

 **18 300**
People received education, via direct information or on-ground contact

 **68**
Community on-ground restoration work days

 **98**
Schools engaged in on-ground activities and environmental education

 **29**
Friends of Groups engaged

FROM THE CHAIR—*Pat Hart*



As SERCUL enters its 15th year I am so proud of the key role it has had and is still having in the repair and management of our natural environment in our sub region and beyond. Reflecting on our aims and objectives that have not altered since we began, it is so rewarding and reassuring to see that we have kept our focus and despite many challenges have set a standard and model for others to follow.

To gain the key funding that we require in order to meet our aims and objectives, and in particular supporting community groups in various ways, it has become necessary for us to have a business arm where we tender for on ground work, design or consulting. All the money we manage to earn goes back into SERCUL to ensure our goals are being met. Unfortunately, for whatever reasons recently, this has been challenged by others who appear to think that we are just trying to build a large organisation. This comment and others have been extremely disappointing as it is so far from the truth. Unfortunately we have been so focused on meeting our aims and objectives that perhaps we have not sold our story enough.

Our annual reports and detailed reports clearly show that for every dollar the Government invests in SERCUL they receive at least four or five dollars in return. SERCUL has clearly shown over the many years that we can deliver for Government so much cheaper and get excellent outcomes. Our ability to attract Local Government and Commonwealth funding to address the repair and management of the natural environment is outstanding. SERCUL's ability to influence change in how the environment is managed is second to none.

SERCUL's Urban Waterways Renewal program has influenced how State and Local Governments undertake renewing of drains to living streams, our influence on Water Corporation with Bannister Creek and Bull Creek drains is acknowledged. SERCUL's Mozzie Wise program has seen the Health Department take a different approach to many areas that are prone to mosquito problems. The Fertilise Wise program that SERCUL initiated is now metro and beyond, the Sediment Task Force was initiated due to SERCUL's influence, water quality monitoring is being led by SERCUL who are working with Local Government to address the hot spots identified. SERCUL recognising that Hydrocotyle had once again severely infested drains and the Canning River were able through our local Federal member to attract large amounts of funding to assist in combating this aquatic weed and hopefully this coming year will see it eradicated.

SERCUL have engaged with Local Governments who in the past have not worked closely with their community environmental groups. We are now seeing them gradually taking on more of that responsibility. There are many other areas that SERCUL has influenced and will continue to do so as that is one of our key roles. However, to continue to do this we do need additional funds and if they are not able to come from the State or Commonwealth then we have no alternative but to go out and earn the funds required. Our alternative is to gradually withdraw and wind down.

We have over the years been so fortunate to have outstanding committed and talented staff members that are great team players, have excellent work ethics and are great ambassadors for SERCUL. On our committee we have many of the original members still representing community groups in our sub region plus new members who bring along their knowledge to our meetings. Our executive which consists of five committee members who have a wealth of knowledge and experience and are of significant support in the governance and overall performance of SERCUL and to whom I am most grateful for. To our CEO Brett Kuhlmann I say a big thank you for your excellent role and commitment to SERCUL.


Pat Hart
Chairperson

FROM THE CEO—*Brett Kuhlmann*



During the 2016-17 financial year we invited our members and stakeholders to participate in a review of the vision, mission and objectives of the association, including a discussion on the priorities for the future. With some minor wording amendments, there was a significant unity among the members and stakeholders for the vision, mission and objectives of the association. The discussion for the priorities of the association highlighted the changing perceptions around how the organisation operates and the varying expectations of balance between the roles of implementation, facilitation and support.

The organisation has grown from its early beginning and the delivery of the organisation has grown significantly in line with this. Over this time the association has made significant progress through a network of passionate and dedicated individuals. It is evident that this network of people is still passionate and is still pushing for changes to improve the future of our natural environment.

There are a growing number of new members and new stakeholders who are also making their contribution and providing new perspectives towards achieving the vision. Their passion for the future of our natural areas is equally evident. While economic conditions are becoming increasingly challenging, it is truly encouraging and energising to see this passion from a diverse and increasing number of our community. The level of interest and the demand for positive

change is high, with the funding available to undertake this change appearing, as always, to be a limiting factor. The network of people involved with this association is amazing.

Operationally, the balance between implementation, facilitation and support is limited by the funding available. The network of people working toward this vision however, often defy this limitation. Although the outputs from this network of people are not purely determined by traditional economics, we believe that their effort should not be taken for granted. The funding available to support community driven landcare is diminishing. The need however, for community support is increasing. A diversification of funding streams is part of the current economic climate. The community cannot be expected to undertake this work without support.

I would like to thank the staff of SERCUL for their effort, their passion and their commitment to their work. I would like to thank the members of our General Committee and our Executive Committee. These people give their time, knowledge and experience, all of which are a key part in the delivery of this association. I would also like to acknowledge and thank all of the community members who look after their natural areas. Your combined efforts are truly astounding and need to be recognised.


Brett Kuhlmann
Chief Executive Officer



VISION

To have, as a given, the natural resources of the South Region of Perth managed in a healthy and sustainable manner by all stakeholders for future generations.

MISSION

The aim is to use integrated Natural Resource Management to develop cultural change in how the community views and interacts with the environment while promoting and actively participating in the improvement of the health of waterways and other ecosystems within the South Region.

OBJECTIVES

- To identify priority Natural Resource Management issues in the South Region in partnership with Local Government, State Government and industry.
- To ensure biodiversity within the South Region is monitored, protected and enhanced.
- Assist community, State and Local Government in the coordination of Natural Resource Management in the South Region.
- Support and encourage the implementation of best management practice of natural resources within the South Region.
- Recognise and embrace Aboriginal, cultural and natural heritage.
- Foster research on matters relating to the South Region's natural and cultural heritage.
- Work in partnership with Local Government, State Government and industry to educate the wider community to protect our natural resources.
- Support and encourage the formation and training of community environment groups.
- Support the development and implementation of projects that occur outside the South Region that align with and benefit the delivery of the SERCUL objectives.
- Administer the South East Regional Centre for Urban Landcare Inc. funds to promote the objectives and outcomes of the Association.

The SERCUL Constitution was amended and lodged with the Department of Commerce (DoC) in June 2017 in accordance with the new Incorporations Association Act 2015. The new Act places some mandatory requirements (mainly financial reporting and auditing), that must now be undertaken by not-for-profit associations and these must be reflected in the association's Constitution.

The changes made to the Constitution are three fold and include:

- New provisions that must be included in the rules of every association in order to meet the requirement of the new law.
- Provisions in the old Constitution that need to be updated and reworded due to the new Act. This rewording does not change the intent or meaning of the rules.
- A general rearranging of the rules in the Constitution as suggested by DoC and to make it easier to read.

SERCUL will now be assisting other affiliated community groups in the amendment of their respective Constitutions.

SERCUL, as an incorporated, independent community environmental organisation, are able to bring together the community, State and Federal Government agencies, Local Governments, businesses and educational institutions to plan for, develop and implement projects that will improve the natural environment using a strategic and integrated approach.

SERCUL is a sub-regional organisation that operates within the metropolitan and peri-urban areas of the Canning River Catchment. The area covered takes in most of the southern and eastern suburbs of Perth and includes Dyarguu (the Canning River), the Southern-Wungong River and parts of Derbarl Yaragan (the Swan River). This is shown on the map below:

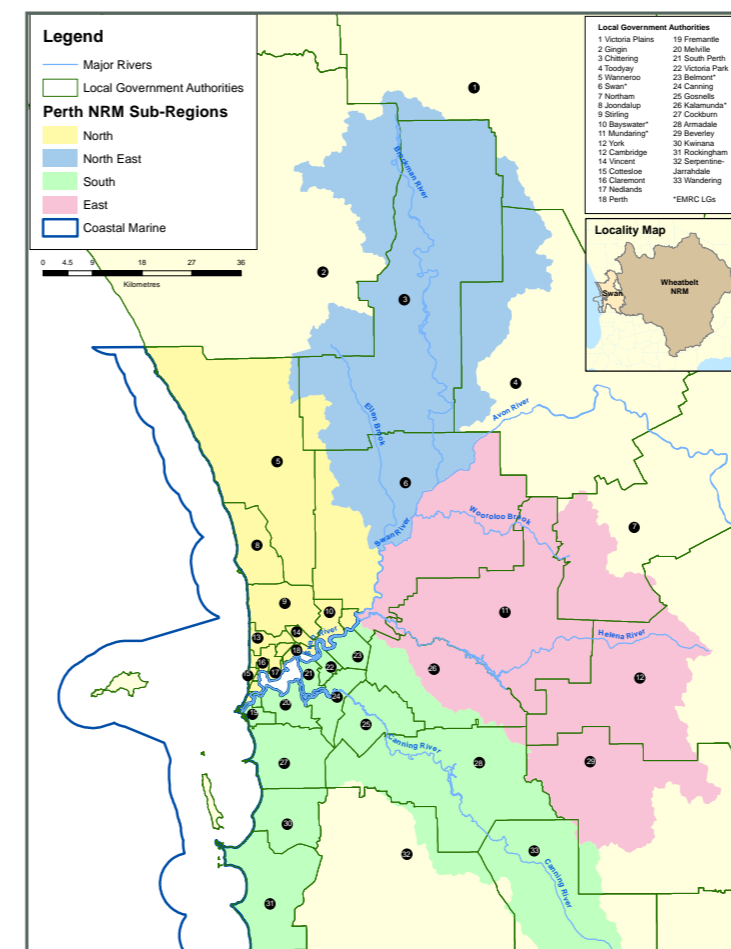
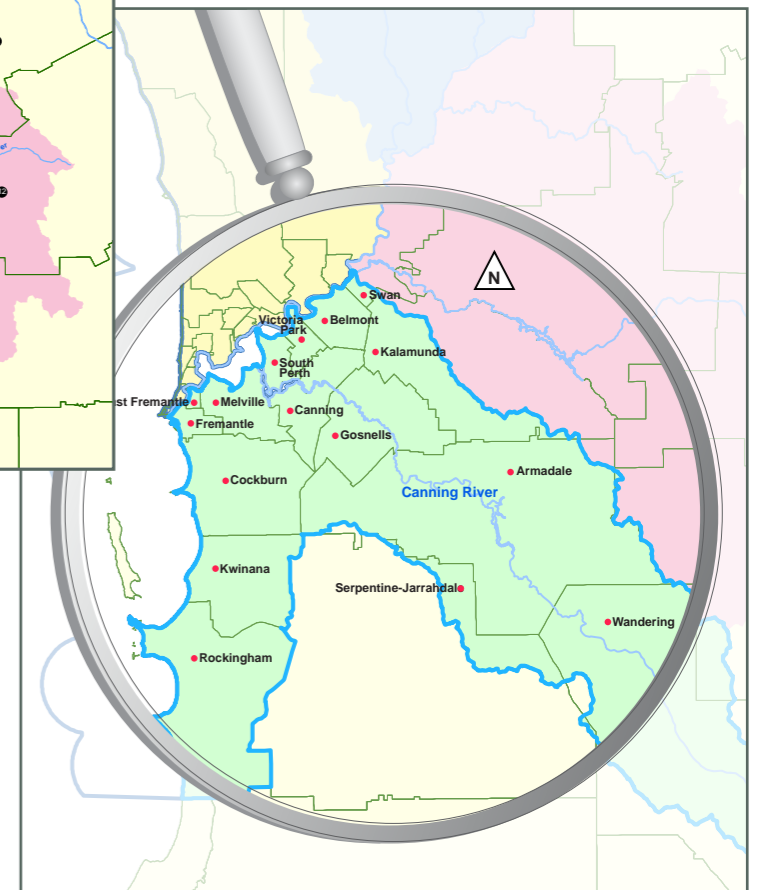


Figure 1: Division of the Swan NRM Region into five sub regions

The South Region is defined as consisting of those parts of the Cities of Armadale, Belmont, Canning, Cockburn, Fremantle, Gosnells, Kwinana, Melville, Rockingham, South Perth, Shire of Kalamunda and Towns of East Fremantle and Victoria Park which fall within the boundary of the Swan Natural Resource Management Region.

Figure 2: South Sub Region



STAFF EMPLOYED DURING 2016-17

Jose Alcala – HR Payroll and Administration Officer
***Alice Atkinson** – Water Quality and GIS Officer (*Dec 2016)
Daniel Barczy – Landcare Officer (Environmental Services Unit)
Anneliese Bone – Landcare Officer (Environmental Services Unit)
Natasha Bowden – Environmental Education Officer
Klara Browne – Work for the Dole Officer and Volunteer Coordinator
Glen Byleveld – General Manager
Caitlin Conway – Water Quality Officer
Megan Crotty – Landcare Officer (Environmental Services Unit)
Monica Estrada – Business and Finance Manager
***Tracy Evans** – Landcare Officer (*Jul 2017)
Erin Farley – Environmental Education Officer
Dan Friesen – Community and Grants Manager
Farina Gandadjaja – Administration and Financial Assistant
***Russell Gorton** – Landcare Officer (Environmental Services Unit) (*Apr 2017)
Matthew Grimby – Environmental Services Unit Manager
Amy Krupa – Education and Promotion Manager
Brett Kuhlmann – Chief Executive Officer
Noratiah Larry – Work for the Dole Officer
John Maliunas – Landcare Officer and Precinct Manager
***Deborah Mattsen** – Administration and Financial Assistant (*Jun 2017)
Daniel Millea – Landcare and Waterways Officer
Catherine Morgan – Landcare Officer (Environmental Services Unit)
Darren O'Brien – Landcare Officer (Environmental Services Unit)
Tarnisha Ogilvie – Booyi Program Coordinator
Wilson Orjuela – Environmental Scientist
Andy Owen – Landcare Officer (Environmental Services Unit)
Tony Parrelli – Landcare Officer (Environmental Services Unit)
Saw Ta Pweh – Landcare Officer (Environmental Services Unit)
Jakub Pyrchla – Work for the Dole Officer
Julie Robert – Special Projects Manager
Melinda Snowball – Promotions and Graphic Design Officer/Volunteer Coordinator
Lat Too – Landcare Officer (Environmental Services Unit)
Russell Walczak – Work for the Dole and Landcare Officer
***Amy Warner** – Community Liaison/Landcare Officer (City of Canning) and BCCG Coordinator (*Nov 2016)
Dr Rose Weerasinghe – Ecologist
Cat Williams – Community Liaison/Landcare Officer (City of Canning) and BCCG Coordinator

LGSWA STAFF:

Kylie Hosking – Little Green Steps WA Education Officer
Megan Mentz – Little Green Steps WA Program Manager
Anne Pettit – Little Green Steps WA Education Officer

*No longer working - resigned or retired during the 2016-2017 financial year



EXECUTIVE COMMITTEE

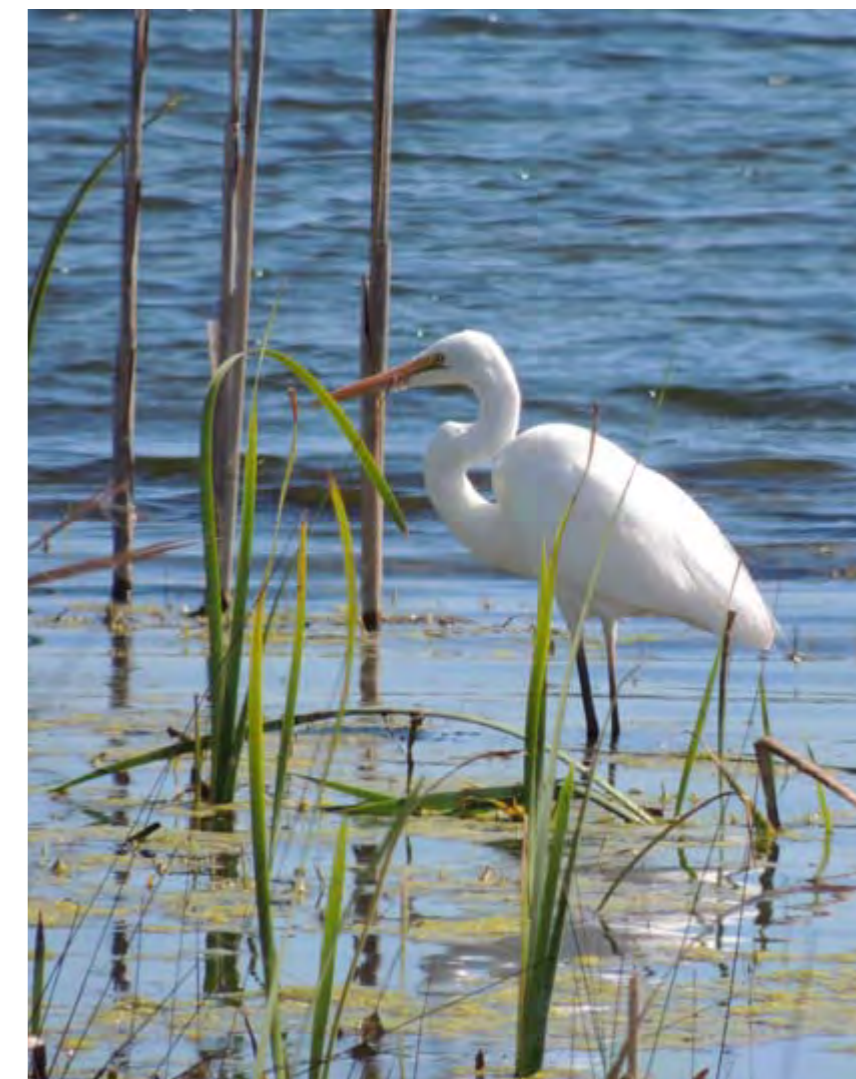
Chair: Pat Hart
 Vice Chair: Marc Lane
 Treasurer: Max Houghton
 Member: Kobi Bradshaw
 Member: Marie Taylor

COMMUNITY COMMITTEE MEMBERS

Steven Johnston
 David James
 Ken Downsborough

STATE AND LOCAL GOVERNMENT REPRESENTATIVES

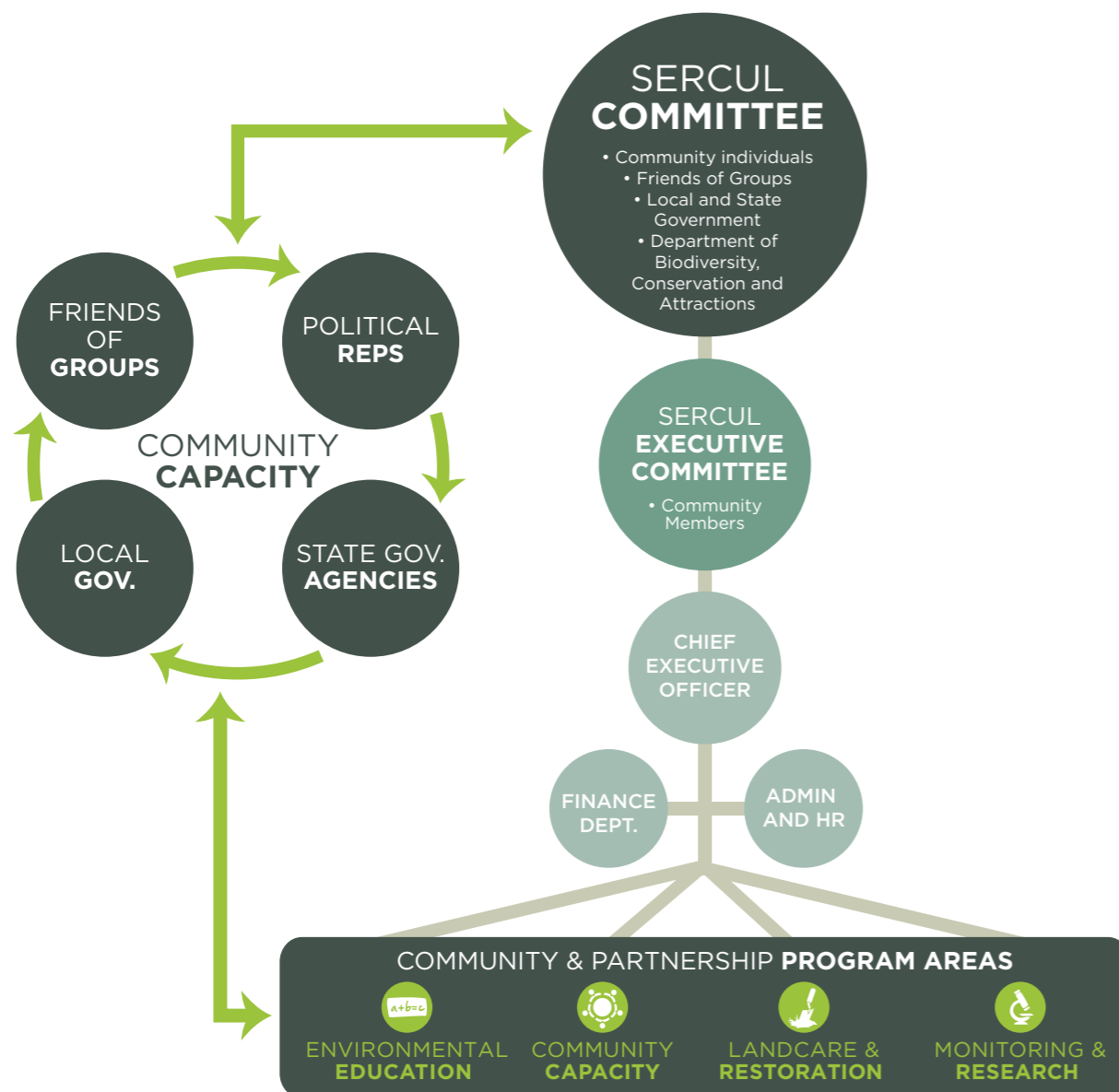
Department of Biodiversity,
 Conservation and Attractions
 City of Armadale
 City of Belmont
 City of Canning
 City of Gosnells
 City of Melville
 City of South Perth
 Town of Victoria Park



SERCUL works towards their vision through a combination of informal relationships and organisational structure. The vision of this association cannot be achieved in isolation. It requires both a landscape change and a human change in the way we perceive and interact with our natural environment. The community's capacity to make this change is an important aspect of delivery towards the vision of the association.

The organisation has three funding models to enable delivery including grants, partnerships and environmental services. Friends of Groups are our grass roots and our passion. These people give their time and knowledge, working towards protecting or

improving their natural areas. Grant projects are primarily undertaken to develop and support this capacity. Partnership projects are undertaken with a variety of stakeholders with whom we share a common vision. Individual partnership projects are undertaken towards specific objectives. Environmental services are undertaken on a fee for service basis. The specific intent of this delivery model is to generate income to support the coordination and facilitation of community capacity delivery. It is recognised that in an ever tightening and diminishing funding environment there is limited external support provided to this area.




ENVIRONMENTAL EDUCATION



- Phosphorus Awareness Project
- Fertilise Wise Fertiliser Training
- Bennett Brook Education Program
- Mozzie Wise Program
- Little Green Steps WA
- Booyi Cultural Program
- Aquatic Weed Management Training



LANDCARE & RESTORATION



- Brentwood Main Drain Project
- Drainage Nutrient Intervention Program
- Canning River Restoration
- Hydrocotyle Eradication Program
- Direct Community Action
- Bull Creek Catchment Restoration
- Booragoon and Blue Gum Lakes Restoration
- Beckenham Open Space Projects
- Bowra & O'Dea and Men of the Trees Memorial Groves Project



COMMUNITY CAPACITY



- Volunteer Management
- Patio Construction
- Community Administration Assistance
- Community Group Support
- Work for the Dole Program
- Bannister Creek Catchment Group
- Armadale Gosnells Landcare Group



MONITORING & RESEARCH



- Water Quality Partnership Project
- Managing Mosquitoes with Restoration
- Horley Road Wetland Biomonitoring





ALGAE BUSTER



PHOSPHORUS AWARENESS PROJECT



**7875 PLANTS
INSTALLED**
890 VOLUNTEERS
**865 VOLUNTEER
HOURS**
VALUE = \$29 159

PHOSPHORUS AWARENESS PROJECT

Coordinated by Amy Krupa

PROJECT OVERVIEW

The Phosphorus Awareness Project is an education campaign that aims to educate the general community about the impact of too many nutrients in the Swan and Canning River systems and wetlands, and how to reduce those levels.

KEY ACHIEVEMENTS

15 displays at the Perth Garden Festival, Community Science Expo and other community festivals, speaking with more than **5035 people**.

235 school presentations to **6595 students** from Kindy to Year 12.

21 school planting sessions by Kindy to Year 12 students.

21 community presentations to **490 people**.

2017 **LGA Annual Nutrient Survey** sent to Local Governments in June. Received 21 responses and report is currently being written.

Supported groups with project resources on 29 occasions.

Hosted the **Canoeing on the Canning workshop** with 12 teachers and community members attending this professional development workshop.

Catchments, Corridors and Coasts – on the organising committee and presented at this three-day course attended by 21 participants.

Fertilise Wise Project – over **2635** of all five brochures distributed at events and to nurseries.

Grow Local Plants Project – over **3735** of all five brochures distributed at events and to nurseries.

Brochure Distribution – over **17 040** Phosphorus Awareness Project resources distributed.

Articles – about the Project in newspapers and newsletters on 10 occasions.

Education Newsletter – four per year distributed to 295 schools and teachers.



FERTILISE WISE FERTILISER TRAINING

Coordinated by Amy Krupa

PROJECT OVERVIEW

This project aims to train school gardeners, turf managers and Local Government officers in fertiliser best management practices, specific to Perth. The training is organised by SERCUL and delivered by John Forrest, a lecturer in turf management at South Metropolitan TAFE, Murdoch.

KEY ACHIEVEMENTS

- Four training sessions held with 99 turf managers trained from 36 organisations including public and private schools, Local Governments, universities, golf clubs, country clubs and fertiliser contractors.
- Partnership with the Water Corporation to provide this training for school gardeners.

*Kindly supported by the Department of
Biodiversity, Conservation and Attractions
Parks and Wildlife Service*



BENNETT BROOK EDUCATION PROJECT

Coordinated by Amy Krupa

PROJECT OVERVIEW

This project is an extension of the Phosphorus Awareness Project into the Bennett Brook/Saint Leonards Creek Catchment. Over the project residents and students in the catchment will be educated about protecting the waterways using the existing Fertilise Wise and Freshwater Fauna education programs.

KEY ACHIEVEMENTS

- **11 school presentations** to **310 students** from Kindy to Year 12.
- **Two community presentations** to **45 people**.
- **Seven displays** at shopping centres, Whiteman Park Envirofest and other local events, speaking with more than **2000 people**.
- **One Fertilise Wise Fertiliser Training** session with 19 turf managers trained from seven organisations.
- **Brochure Distribution** – over **2865** Phosphorus Awareness Project resources distributed, 200 Fertilise Wise brochures and 200 Local Plant brochures.
- **Freshwater Fauna Teacher Packs** – nine primary and seven secondary packs have been given to schools in the area.

*Kindly supported by the Department of Biodiversity,
Conservation and Attractions Parks and Wildlife Service*



MOZZIE WISE PROGRAM

Coordinated by Dr Rose Weerasinghe and Amy Krupa

PROGRAM OVERVIEW

The Mozzie Wise Education Program was developed as a key component of SERCUL's integrated mosquito management approach within the Perth Region. The aim of the program is to educate local communities and school children on all aspects of mosquito breeding prevention and personal protection. Informed communities that act upon their knowledge is critical for preventing mosquito borne-diseases, providing mosquito control as well as reducing the use of unnecessary chemicals.

The Mozzie Wise School Program is linked to the relevant Science Learning Area of the National Curriculum and provides a Teacher's Guide for Kindy through to Year 10 teachers and a 'Being Mozzie Wise' incursion.

The major objectives of delivering the Mozzie Wise Education Program in local government areas including schools are to:

- Increase children's science knowledge to help them understand the effect of their actions on the environment;
- Increase children's knowledge and understanding of mosquito ecology;
- Provide an ongoing, uniform, large-scale education program throughout all suburbs;
- Reduce mosquito disease risk among children (there is currently no vaccine or specific treatment for the mosquito-borne diseases that occur in WA); and
- Pass their knowledge on to their family members, other families and the neighbourhood.

KEY ACHIEVEMENTS

- New partnership established with the East Swan River Contiguous Local Authority Group (CLAG) councils (Towns of Bassendean and Victoria Park and Cities of Bayswater, Belmont and Swan) to deliver the Mozzie Wise School Program.
- Continued partnership with the City of Canning to deliver the Mozzie Wise Education Program.
- Conducted Mozzie Wise Education Workshops at the Science Teacher's Association of Western Australia-Future Science Conference and the WA Wetland Conference.
- A Mozzie Wise educational activity stall, material distribution and 388 surveys were conducted at the Community Science Expo in the City of Canning.
- A Mozzie Wise community awareness display and material distribution was conducted at Westfield Carousel Shopping Centre.
- A Mozzie Wise educational display and activity was conducted at the Lynwood Senior High School Sustainability Expo.
- School incursions - presented 16 Being Mozzie Wise incursions to 360 students.



Kindly supported by the ESR Contiguous Local Authority Group (CLAG) councils, CLAG-City of Canning and the Department of Health

LITTLE GREEN STEPS WA PROGRAM

Coordinated by Kylie Hosking, Megan Mentz and Anne Pettit

PROGRAM OVERVIEW

Little Green Steps WA (LGS WA) supports Education for Sustainability in the early years sector. This includes childcare centres, family day care, primary schools, preschools, kindergartens, and out of school hours care services for children aged 0-8 years. LGS WA provides professional development workshops, resources, newsletters, ideas and networking opportunities to anyone that would like to improve their understanding of sustainability and link these practices with Early Years Learning Framework and the National Quality Standard.

LGS WA has partnered with the Cities of Armadale, Canning and Cockburn and the Waste Authority this year. Each partnership entails an LGS WA staff member focusing specifically on each local government area for the equivalent of one day a week and the Waste Authority for half a day per week. LGS WA is a program of the Australian Association for Environmental Education WA Chapter with HR management provided by SERCUL.



KEY ACHIEVEMENTS

- Continued a six month partnership with Waste Wise Schools (to align with the financial year).
- Completion of a two year partnership with the City of Armadale.
- Completion of a two year partnership with the City of Cockburn and a successful procurement of another two year partnership.
- Completion of a one year partnership with the City of Canning and successful procurement of a two year partnership.
- Delivery of five Reducing Waste workshops across Perth and Bunbury
- Delivery of multiple Sustainability Workshops in Perth and Narrogin.
- Development of a new Energy, Air and Transport workshop.
- Completion of the Armadale Sustainability Directory for Early Years Educators and showcased sustainability for educators and providers at an Armadale Expo.
- Facilitated and organised three Sustainable Schools WA network meetings for Early Years educators in the City of Armadale.
- Presented at the EYES conference.
- Provided sessional sustainability presentations to pre-service Early Years Educators at both Murdoch University and Armadale TAFE.
- Attended four community events - Hello Baby in Cockburn; Wired for Science Community Expo, Earth Day Expo and Families Week in Canning.

19 WORKSHOPS/EVENTS

**323 PEOPLE WHO
ATTENDED WORKSHOPS**

**877 PEOPLE ON
NEWSLETTER MAILING LIST**

7 VOLUNTEERS

360 VOLUNTEER HOURS

VALUE = \$12 136



Workshop planning

Kindly supported by the Cities of Armadale, Canning and Cockburn and the Waste Authority



Environmental EDUCATION

$$a+b=c$$

BOOYI CULTURAL PROGRAM

Coordinated by Tarnisha Ogilvie and
Melinda Snowball

PROGRAM OVERVIEW

The Booyi Cultural Program is a partnership between SERCUL and the Yelakitj Moort Noongar Association. It aims at delivering an interactive educational program that teaches the understanding and appreciation of Aboriginal and Torres Strait Islander histories and cultures and to engage people to see the land around them through the eyes of the Noongar people. In understanding this vision and appreciation, people are encouraged to value our rivers, wetlands and natural areas.

The program was launched at the 2016 SERCUL AGM and on October 27th 2016 Alinjarra Primary School participated in the first activities.

Since then the program has presented to a total of 1663 participants ranging from Early Learning Centres to community organisations.

From July 2017 we are looking to restructure the program delivery to develop a curriculum linked package for all ages.

Kindly supported by the State NRM Program



Booyi Cultural Program

17 INCURSIONS
6 EXCURSIONS
1663 PARTICIPANTS
5 EARLY LEARNING
CENTRES
13 PRIMARY SCHOOLS
2 HIGH SCHOOLS
2 HOMESCHOOL
GROUPS
2 COMMUNITY CENTRES



Water Hyacinth

AQUATIC WEED MANAGEMENT TRAINING MANUAL

Coordinated by Julie Robert

PROJECT OVERVIEW

SERCUL commenced an information gathering process in January 2016 bringing together a group of 31 people from Local Governments, DBCA, WA Herbarium, Water Corporation, Community Landcare organisations, Department of Water, State NRM Office, TAFE's and Environmental Business operators to discuss the best management practice for aquatic weeds in Western Australia.

The development of the Aquatic Weed Management Training Manual is progressing towards completion. This project has been delayed due to Julie's illness and delayed delivery of contracted work. However, the completion of the first draft of the manual is expected in September 2017. The manual will include training information and guidance for students, landcare trainees, community groups, on ground pest control operators, local government and agency officers and decision makers.

Kindly supported by the State NRM Program



VOLUNTEER PROGRAM

Coordinated by Klara Browne and Melinda Snowball

PROGRAM OVERVIEW

In 2016-17, SERCUL continued its volunteer management program, which has resulted in valuable hard work through the volunteer's time and effort. At the same time the volunteers have opportunities to learn, gain experience and give back to the community.

REGULAR VOLUNTEERS AND A SPECIAL MENTION TO:

Tina Thorne (196 hrs)
Doug Murphy (210 hrs)
Emily Rankin (209 hrs)
Shannon - Inclusions WA
Bentley Health Unit - Lance,
Robert, Shane and Glen.

These volunteers are just a few that have individually contributed their time to SERCUL over this year. SERCUL would like to thank all the volunteers for their continued dedication and support to our organisation.

Kindly supported by the Department of Biodiversity, Conservation and Attractions and the State NRM Program.

**28 ACTIVE
VOLUNTEERS**

**COMMUNITY BASED
GROUPS - Inclusions
Western Australia, Bentley
Health Unit, CVA, South
Metropolitan TAFE and
atWork Australia**

**1609 VOLUNTEER
HOURS**

VALUE = \$54 239

PATIO CONSTRUCTION AT YULE BROOK HOMESTEAD

In early 2016, SERCUL was awarded a \$20 000 grant by Lotterywest to construct a 12 m x 6 m free standing patio at the rear of the Yule Brook Homestead to be used by community members participating in the Booyi Cultural Program.

The structure was completed in April 2017 and is designed and constructed to comply with the Heritage Conservation Plan over the property and visually is complementary to the Homestead.

SERCUL also had sufficient funds to install blinds on the western side of the structure for weather protection.



ADMINISTRATION SUPPORT TO COMMUNITY GROUPS

Coordinated by Monica Estrada and Jose Alcala

SERCUL continues to provide financial management and/or payroll assistance to the following Community Groups:

- Bannister Creek Catchment Group
- Wilson Wetlands Action Group
- Canning River Regional Park Volunteers
- Friends of Queens Park Bushland
- Friends of Paganoni Swamp
- Australian Association for Environmental Education WA Chapter
- Friends of the Spectacles
- MERG - Murdoch Environmental Restoration Group

SERCUL auspiced grants for the following groups:

- Friends of Paganoni Swamp
- Friends of Wireless Hill
- Friends of the Spectacles
- Friends of Fremantle Beaches
- Murdoch Environmental Restoration Group

SUPPORT TO COMMUNITY GROUPS

Assisting and supporting community groups is a large focus for SERCUL where we build capacity of volunteer groups to deliver on ground environmental outcomes. As the range of groups SERCUL engages is incredibly diverse we adapt our assistance to suit their needs providing support in a variety of ways.

SERCUL, through Austcover (the provider of the Community Environment Insurance Program), provides Public Liability Insurance to nine 'Friends of' SERCUL member groups, to enable them to continue to operate on public land. Each group holds an independent policy coordinated by SERCUL.

SERCUL supports 13 community groups in the region by hosting web pages on the SERCUL website. Community group events and work days are also advertised on the SERCUL website on the Events Calendar, on the SERCUL Facebook page and in SERCUL newsletters.



CRREPA and their new signage, banner, flags and weeding tools. Photos courtesy of CRREPA.

Other ways SERCUL provides assistance to community groups:

- grant writing;
- grant support and management;
- auspicing grants;
- access to volunteer labour;
- access to equipment;
- developing volunteer work plans;
- hosting community events;
- technical advice and support;
- plant ID;
- weed control techniques;
- educational opportunities;
- training workshops;
- insurances and;
- administration services.

**26 COMMUNITY GROUPS
ASSISTED**

**10 AUSPICED GRANTS
SUPPORTING 5
COMMUNITY LANDCARE
GROUPS**

**4 CAPACITY BUILDING
GRANTS**

**9 COMMUNITY GROUPS
PROVIDED PUBLIC
LIABILITY INSURANCE**

**HOST 13 WEB PAGES
FOR COMMUNITY
GROUPS**

**HOSTED 11 PLANTING
EVENTS FOR 9
COMMUNITY GROUPS**

WORK FOR THE DOLE - LANDCARE PROGRAM

Coordinated by Dan Friesen

PROGRAM OVERVIEW

SERCUL has continued to implement Work for the Dole Programs through the job service provider atWork Australia. This program enables us to assist community groups by supporting their activities with in-kind labour through activities such as planting, weed control, woody weed removal, erosion control, fire track maintenance, fencing and rubbish removal. This service is provided free of charge and has been a valuable resource in assisting groups to improve their outcomes and tackle tasks that would otherwise be daunting for volunteers to accomplish.

Over the 2016-2017 year SERCUL hosted a total of 10 programs each running for a six month period. Each program ran two days a week and mobilised up to 11 participants to project sites across the south east metropolitan area.

Kindly supported by atWork Australia and the Australian Government

**105 160 PLANTS
INSTALLED**

**23 322
VOLUNTEER
HOURS**

VALUE = \$786 201

CONSTRUCTION PROGRAM

Supervisor - Jay Pyrchla

PROGRAM OUTPUTS

The program has provided participants with a safe experience working with tools and working in a team.

- 36 metres of rural timber fencing installed at the SERCUL Homestead.
- Pre-assembly of a 30 metre Yule Brook Wetland board walk and installation.
- Dressing, oiling and painting timber.
- Sign making, metal and wood construction.
- Construction of wooden benches.
- Homestead and work compound repairs.
- Gardening, mulching, arbour care, pruning and planting.



Yule Brook Wetland board walk

UPPER CANNING RESTORATION PROGRAM

Supervisor - Jay Pyrchla

PROGRAM OUTPUTS

The program aims at maintaining bushland health, regeneration and rehabilitation of urban bushland in the Gosnells and Armadale Catchment working in collaboration with and to support the efforts of the Armadale Gosnells Landcare Group.

31 600 PLANTS INSTALLED

1.5 HA WEED CONTROL

331 FERAL TREE'S REMOVED

200 M FENCING INSTALLED

9.9 KM TRAIL MANAGEMENT

1 HA BRUSH CUTTING

210 M² EROSION CONTROL

5677 TOTAL PARTICIPANT HOURS



Work for the Dole participant's planting

BECKENHAM RESTORATION PROGRAM

Supervisor - Russell Walczak

PROGRAM OUTPUTS

The Beckenham Restoration Program has provided participants with on-ground environmental management and action skills including plant identification, weed removal, planting and erosion control in a variety of sites located within the Canning River catchment. This program was able to assist community groups including Friends of Forrestdale and Bannister Creek Catchment Group with completing their on-ground outcomes.

64 250 PLANTS INSTALLED

550 FERAL TREE'S REMOVED

220 M² OF EROSION CONTROL

500 HA OF BRUSH CUTTING

5055 TOTAL PARTICIPANT HOURS



Work for the Dole participant's hand weeding at Gibbs Road Reserve

COASTAL PLAIN ROCKINGHAM PROGRAM

Supervisor - Nora Larry

PROGRAM OUTPUTS

Work for the Dole participants in the Coastal Plain Conservation Rockingham Program undertook conservation activities such as planting, weed control, pruning, rubbish collection, track maintenance and fence construction in coastal and urban bushland reserves spanning from Rockingham to Fremantle. Participants worked in conjunction with the Department of Biodiversity, Conservation and Attractions; City of Rockingham; Friends of Harrisdale Swamp and Friends of Paganoni Swamp to restore and rehabilitate the local environment.

WESTERN PLAIN SPEARWOOD PROGRAM

Supervisor - Nora Larry

PROGRAM OUTPUTS

The Western Plain Conservation Spearwood Program provided Work for the Dole participants the opportunity to work in coastal reserves spanning from Fremantle to Rockingham. Participants worked in conjunction with the City of Fremantle, Perth NRM Coastcare, Friends of Hollis Park and Friends of Fremantle Beaches to restore and rehabilitate the local environment.

Participants have accomplished outstanding environmental and community outcomes by undertaking conservation activities such as planting, weed control, pruning, rubbish collection, track maintenance and fence construction.

5150 PLANTS INSTALLED

3.65 HA WEED CONTROL

210 M FENCING INSTALLED

300 M TRAIL MAINTENANCE

300 M² EROSION CONTROL

5040 TOTAL PARTICIPANT HOURS



4200 PLANTS INSTALLED

17.2 HA WEED CONTROL

300 M FENCING INSTALLED

150 M TRAIL MAINTENANCE

250 M² EROSION CONTROL

4500 TOTAL PARTICIPANT HOURS

BANNISTER CREEK UWR MAINTENANCE PROJECT/FINAL STAGE WORKS

The Lynwood suburb section of Bannister Creek is the site of several different projects and grants across the past financial year.

The Urban Waterways Renewal Project (UWR) relates to the section of Bannister Creek between Hybanthus Road and Acacia Place Footbridge. This project was funded by State NRM. This project concluded in June 2017.

The Final Stage Project relates to works between Iveston Road and the Acacia Place footbridge and is funded under SALP. This project was completed in October 2016.

The new State NRM grant commencing in March 2017 unites these two former projects within one named: Bannister Creek Restoration Maintenance Project.

The statistics shown comprise elements across all three of these funded projects as they each span the last financial year. This portion of the creek has received two decades of planting and weed control and the on-ground results are very encouraging with possible feeding signs of Rakali being observed near Metcalfe Road Bridge.

Future works will continue to undertake small quantities of infill planting to improve understorey with a wider range of species. Weed control will continue, in particular for *Typha orientalis*. This species is ever present and does not take long to out-compete native sedges and rushes.

A seed collection element is also under consideration for future works; not only to obtain seed for rehabilitation, but to bring together landcare volunteers and staff within the City of Canning for some field based training and knowledge sharing opportunities.



Photos: Above – Vellgrove Ecological Corridor September 2016, Above right – Lynwood SHS bank stabilisation planting August 2016 Acacia Footbridge, Right – National Tree Day Planting 2016; installing fringing vegetation.



Coordinated by Amy Warner
and Cat Williams

**13 481 PLANTS
INSTALLED**
274 VOLUNTEERS
**556 VOLUNTEER
HOURS**
VALUE = \$18 743

Kindly supported by State NRM
Program, Swan Alcoa Landcare
Program and City of Canning



BANNISTER CREEK, FERNDALE

The Ferndale portion of Bannister Creek has received SALP funds for weed control. Large numbers of wetland plants have been provided through SERCUL's SCRRP funds. This includes some funded labour for revegetation planting to help achieve the large numbers installed over the 16-17 financial year.

Most of the plants have been put into the floodplain adjacent to the creek, where rich, black soils have greatly helped their survival despite a dry start to the year in 2017. Species were mostly sedge and rush with some understorey shrubs including *Taxandria linearifolia* (swamp peppermint).

Weed control included brush cutting and chemical spraying mainly for Paspalum and Cyperus species. This section of Bannister Creek also had an outbreak of Cotton Bush, *Gomphocarpus fruticosus*. This plant is highly invasive and is a Declared Pest (DP). Around 60 plants were found and hand pulled and we would urge people to be vigilant for Cotton Bush as early detection saves much work!

21 601 PLANTS INSTALLED
18 VOLUNTEERS
98 VOLUNTEER HOURS
VALUE = \$3304

Kindly supported by Swan Alcoa Landcare Program,
Swan-Canning River Recovery Program and
City of Canning



VELLGROVE ECOLOGICAL CORRIDOR

The Vellgrove Ecological Corridor runs parallel to Roe Highway and has a small watercourse running through it which ultimately flows into Bannister Creek. Water testing by SERCUL at this site shows interesting fluctuations in pH and also high iron, which the restoration activity hopes to address.

Restoration by performing additional tubestock planting and weed control has been ongoing for ten years at Vellgrove and has comprised both wetland and dryland species. Nutgrass and Veldt Grass are the key invasive species which will continue to be a focus for control as further infill planting adds diversity to the site. Many voluntary hours were contributed through manual weed control.

1928 PLANTS INSTALLED
39 VOLUNTEERS
146 VOLUNTEER HOURS
VALUE = \$4922

Kindly supported by Swan Alcoa Landcare
Program and City of Canning

We would like to thank the following for continuing to support us and facilitate our work in the Bannister Creek Catchment:

- State NRM Office and Perth NRM
- Department of Biodiversity, Conservation and Attractions
- Water Corporation
- Department of Water and Environmental Regulation
- Amy Warner – former Community Liaison & Landcare Officer BCCG
- City of Canning – especially environment staff and the Natural Areas Team
- South East Regional Centre for Urban Landcare
- Staff and students of Bannister Creek PS and Lynwood SHS
- All others who have worked with Bannister Creek Catchment Group in 2016-17



ARMADALE GOSNELLS LANDCARE GROUP

Coordinated by:
Jen Francis/Narelle Mewburn – Community Landcare Coordinator
Shane Hunter – Community Landcare Officer

The Armadale Gosnells Landcare Group (AGLG) to date has focused on community awareness-raising, education and the coordination and implementation of on-ground restoration of local bushlands, rivers and associated waterways. This financial year AGLG continued its long term goal of restoring and connecting the river foreshore along the Canning River to create a continuous habitat corridor. The commitment and passion of our community continues to be a great motivator of the environmental work that AGLG does and we welcomed the formation of a new friends group within the Astley Street River Park region, in the City of Gosnells.

A total of 86 community work days were held, with the major planting events being National Tree Day and Bushcare's Major Day Out. The City of Gosnells in collaboration with National Tree Day sponsors Prosser Toyota and the City of Armadale in collaboration with the Lions Club joined AGLG to successfully plant approximately 8700 plants with approximately 300 community members. AGLG also invite school groups, outdoor education clubs and other community groups to participate in tree planting activities. AGLG were joined by 23 schools, including some outside of the catchment. AGLG also hosted and/or were present at community workshops and events, including the Western Australian Landcare Network Annual General Meeting and Field Trip Day, the Kelmscott Show, the spring into Armadale Festival, Natures Beauty Revealed, Little Scribblers, Mills Park Community Day and Harmony Week celebrations. AGLG presented and ran walks and talks to various community groups and interested parties including the Wildflower Society – Armadale Branch, Rotary Club – Armadale, Step into Volunteering – Armadale, Friends of Brixton Street Wetlands and Friends of Mary Carroll Wetland – City of Gosnells.

AGLG planted 120 000 seedlings in the 2016 winter/spring planting season. We were also pleased to have assistance two days a week from a Work for the Dole team which brought much needed extra hands along to our sites. Recruitment for a Green Army Team to assist in the 2017 winter/spring planting season has ensured the resources needed to fulfil our high revegetation and restoration success.



Photos: Above – Local schools helping restore our rivers.
Right top – Display at Mills Park Community Day, City of Gosnells, Right bottom – Corporate planting day at Fancote Park, City of Armadale.

KEY ACHIEVEMENTS

Key achievements for AGLG in the past year were the completion and hand back of three project sites, one in the City of Gosnells and two in the City of Armadale. These have been restored to a level where they can sustain themselves and require minimal maintenance from the land managers.

Adding to AGLG's project site and grants portfolio is a unique collaborative arrangement between the City of Gosnells, Western Australian Planning Commission (WAPC) and the Department of Biodiversity, Conservation and Attractions (DBCA). This involves the restoration and rejuvenation of a section of the Southern River, associated with the old Fremantle Bridge.



Kindly supported by the City of Armadale; City of Gosnells; Australian Government's National Landcare Programme; Department of Biodiversity, Conservation and Attractions; Alcoa; Western Australian Government's State Natural Resource Management Program; Perth NRM and Cedar Woods Properties Limited.

24 SITES

120 000 PLANTS
INSTALLED

86 COMMUNITY
WORK DAYS


23 SCHOOLS ENGAGED

12 COMMUNITY
WORKSHOP/EVENTS

3132 VOLUNTEERS

10 111 VOLUNTEER
HOURS

VALUE = \$340 833



'Community capacity is the ability for each of us to be able to contribute towards a goal. It is Friends of Groups, Local Government, State agencies and political representatives working together. When this is dynamic and flowing well the results are outstanding.'

Brett Kuhlmann, CEO

BRENTWOOD MAIN DRAIN PROJECT

KAALITJ NGORT KOONDAAM - DRAGONFLY DREAMING

Coordinated by Glen Byleveld

PROJECT OVERVIEW

The Brentwood Main Drain Project aims to improve water quality, natural diversity and the visual amenity of Bateman Reserve in the Bull Creek Catchment. The project involves the conversion of a piped main drain into a living stream.

KEY ACHIEVEMENTS

Final construction works were completed in April 2017. Revegetation and weed control will continue in 2017-18 with hand-over to the City of Melville due in early 2018.



*Photos: Top - Before earthworks and construction phase,
Bottom - After the construction and planting.*

**8250 PLANTS
INSTALLED**

**2 HA OF WEED
MANAGEMENT**

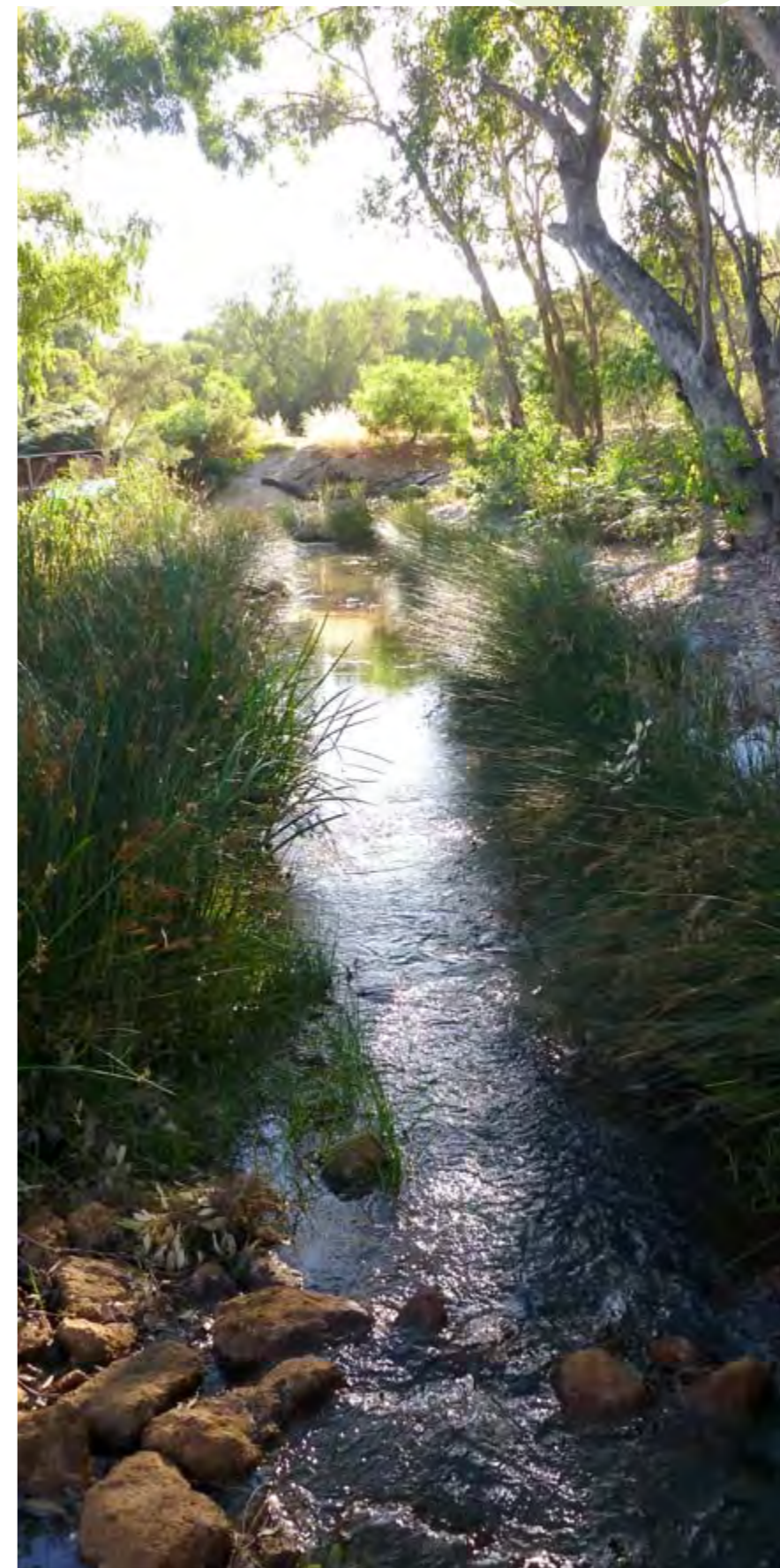
10 VOLUNTEERS

**65 VOLUNTEER
HOURS**

VALUE = \$2191



*Kindly supported by the Australian
Governments Caring for our Country
Program; Department of Biodiversity,
Conservation and Attractions Parks and
Wildlife Services; Main Roads; Water
Corporation and the City of Melville*





Landcare & RESTORATION

DRAINAGE NUTRIENT INTERVENTION PROGRAM

Coordinated by Glen Byleveld

Location – City of Canning and Gosnells

PROGRAM OVERVIEW

SERCUL assists the Department of Biodiversity, Conservation and Attractions Parks and Wildlife Services with coordinating and delivering monitoring and maintenance activities at Drainage Nutrient Intervention Program sites within the Cities of Canning and Gosnells.

SERCUL's role includes:

- Coordination of project partners including the local government authorities, Water Corporation and Department of Water;
- Vegetation and water quality monitoring; and
- Planting and weed control.

Active sites within this period include Wharf Street Wetland, Anvil Way Wetland, Liege Street Wetland and Bickley Basin.

Kindly supported by Department of Biodiversity, Conservation and Attractions Parks and Wildlife Service

**6350 PLANTS
INSTALLED**

**2 HA WEED
MANAGEMENT**

18 VOLUNTEERS

**108 VOLUNTEER
HOURS**

VALUE = \$3641



CANNING RIVER RESTORATION

Coordinated by Russell Walczak

*Location – Canning River at Kent Street,
Wilson and Nicholson Road, Langford*

PROJECT OVERVIEW

This project encompasses two sites along the Canning River where we have been undertaking weed control and revegetation activities to help restore habitat to this important ecological corridor. The project is in its fifth year of management by SERCUL and is showing excellent results as we see the native germination after the fire in 2011 along with each years revegetation become more established. The planting and feral tree control was completed by dedicated volunteers and the Work for the Dole team (total of 262 hours), without which the project would not be viable.

12 HA OF WEED CONTROL

8500 PLANTS INSTALLED

2 VOLUNTEERS

15 VOLUNTEER HOURS

VALUE = \$506

Kindly supported by State NRM Community Grants

HYDROCOTYLE ERADICATION PROGRAM

Coordinated by Matt Grimby

PROGRAM OVERVIEW

Hydrocotyle ranunculoides is an aquatic weed that can double its biomass every three days in its peak growth periods and reproduces both by seed and vegetatively. This Weed of National Significance has at times covered a three kilometre section of the Canning River from bank to bank and since the 1990's has cost land managers in excess of \$2 million in maintenance costs.

This program is seeking to eradicate Hydrocotyle from the Canning River Catchment. In 2015 SERCUL, with the Hydrocotyle Working Group, were successful in winning the contract released by Perth NRM to coordinate and implement this eradication program. The program, currently at the halfway point, has been highly successful with Hydrocotyle on track for complete eradication by 2020 as planned. Localised eradication has been achieved along Mills St Main Drain (a Water Corp asset) and Collier Pines Drain (a Water Corp and City of South Perth asset).

The steps involved in coordinating and implementing this program were:

- Meeting with all land managers and community groups where Hydrocotyle is present and reaching an agreed management strategy across all land tenures to ensure consistency of management and success of eradication program.
- Initial mapping of Hydrocotyle across the catchment to determine the extent and level of infestation.
- Mapping of other weeds that needed controlling across the Hydrocotyle infestation that could inhibit the management of Hydrocotyle.

- Initial weed control of large infestations of *Typha orientalis* where it was inhibiting the control of Hydrocotyle. This involved hand spraying with Roundup Biactive. Six weeks following application of herbicide the Typha was slashed and removed from site to a composting facility where it was turned into useable compost.
- Follow up control of Typha and other weeds occurred on the sites where it was treated to maintain access to the Hydrocotyle infestation area. Control of other weeds occurred as required which resulted in treatments every three months on average.
- Initial control of all Hydrocotyle infestations with Roundup Biactive.
- Follow up control of all Hydrocotyle infestations.
- Monthly mapping of Hydrocotyle infestation and hand removal of all Hydrocotyle infestations of less than 1 m². Careful hand removal was critical as Hydrocotyle can spread vegetatively from a single node to establish new populations.

Stakeholders include Department of Biodiversity, Conservation and Attractions; Bannister Creek Catchment Group; Canning River Regional Park Volunteers; Christian Brothers; City of Canning; City of South Perth; Water Corporation and Wilson Wetlands Action Group.

Kindly supported by Perth NRM through the Swan-Canning River Recovery Program



The Swan-Canning River Recovery Program projects are a result of proactive local Friends of Groups highlighting their concerns about the Canning River. In January 2015, Federal Environment Minister Hunt announced the Swan-Canning River Recovery Program (SCRRP), a \$1 million commitment to improve the health of the Swan and Canning Rivers across the 2015-16 and 2016-17 financial years.

The program funding, coordinated through Perth NRM, contributed \$500 000 to improve the health of the Swan and Canning Rivers by controlling *Hydrocotyle ranunculoides* (Hydrocotyle). This included the development of a management plan and the physical control of Hydrocotyle and other associated priority weeds.



Wilson Wetland Hydrocotyle Survey – June 2016



Wilson Wetland Hydrocotyle Survey – June 2017

DIRECT COMMUNITY ACTION PROGRAM

Coordinated by Dan Friesen

PROJECT SITES:

Aquinas College, Bannister Creek, Rossmoyne Foreshore, Lambertia Creek, Ferndale Flood Plain and Kent Street.

PROGRAM OVERVIEW

This program commenced in 2015 and was completed in 2017 across the six project sites assisting project partners to deliver on-ground restoration activities.

This program addressed the restoration needs of several community organisations increasing the greater community action in the recovery of the Canning River and its tributaries.

On the Canning River near Kent St, in partnership with Wilson Wetlands Action Group, nearly 16 000 native seedlings were planted with ongoing weed management to restore and stabilise the Canning foreshore.

Along the Canning River adjacent to the Mount Henry Peninsula in the City of South Perth a project site was established for Aquinas College. Over 100 students became involved in restoration activities, learning about the importance of our natural resources, habitat and water quality. Students planted 9000 native seedlings.

In partnership with the Bannister Creek Catchment Group and the City of Canning a post fire site of Bannister Creek was revegetated with 25 000 native seedlings and ongoing weed management.

In partnership with the City of Canning, SERCUL assisted in the revegetation of a section of Lambertia Creek ahead of their planned works to convert a section from a drainage network into a living stream. Planting of 15 000 seedlings occurred.

The Canning River Residents Environment Protection Association planted 2860 native seedlings along the Rossmoyne Foreshore.

The Canning River Flood Plain Restoration has seen 10 000 seedlings installed, and support was provided to the City of Canning for its project to re-engage the flood plain.

As a result of this program SERCUL and the Community Groups involved have planted 78 000 native seedlings across six sites.

PROGRAM PARTNERS:

Aquinas College, Bannister Creek Catchment Group, Canning River Regional Environment Protection Association, Wilson Wetland Action Group, City of South Perth, City of Canning.

Kindly supported by Perth NRM through the Swan-Canning River Recovery Program

4.2 HA WEED CONTROL

78 000 PLANTS INSTALLED

3 COMMUNITY PLANTING EVENTS

5 GROUPS SUPPORTED



Through the Swan-Canning River Recovery Program (SCRRP) funding, \$400 000 was set aside for a community grant process to assist community groups to deliver on-ground outcomes. SERCUL was successful in receiving funding through this process that provided support for six community groups within the priority areas. A new round of SCRRP funding has been announced and will open in December 2017.



BULL CREEK CATCHMENT RESTORATION

Coordinated by Dan Friesen

Location – Bull Creek Catchment, City of Melville

PROJECT OVERVIEW

The restoration of Bull Creek aims to protect and enhance the highly valued remnant vegetation still remaining within the Reserve. This will also re-engage the flood plain allowing the native plants to filter the water flowing through Bull Creek, improving the quality of the water entering the Canning River.

SERCUL's main role in the restoration of Bull Creek is supporting the Friends of Bull Creek Catchment (FoBCC) to deliver their vision to restore Bull Creek and improve water quality within the creek.

Through the delivery of these projects, SERCUL has continued to build and enhance its already strong relationship with the Friends of Bull Creek Catchment, expanding their natural resource management network, expertise and capacity while continuing to engage the surrounding and broader community.

In partnership with the Friends of Bull Creek Catchment, Rossmoyne Senior High School Bushrangers, City of Melville, Conservation Volunteers Aboriginal Training Program and SERCUL's Work for the Dole team, we planted 24 515 native seedlings.

KEY ACHIEVEMENTS

- Over 150 individual volunteers contributing 2565 volunteer hours by the Friends of Bull Creek Catchment and community.
- 24 515 plants installed and over 6 ha of weed management undertaken.
- Events:
 - 24 FoBCC events,
 - 30 Rossmoyne Senior High School Bushranger days,
 - 5 Conservation Volunteer Australia Aboriginal Training Unit days
 - 1 Green Army Day
 - 2 Community Planting Events
 - 1 Traditional Walk through the Booyi Cultural Program

Kindly supported by SALP, State NRM Program, 25th Anniversary Landcare Grants, Swan-Canning River Recovery Program coordinated through Perth NRM, City of Melville and DBCA

24 515 PLANTS INSTALLED

150 VOLUNTEER

2565 VOLUNTEER HOURS

VALUE = \$86 466



CVA Aboriginal Team cutting down blackberry following power tool training

BROLGA LAKE

Coordinated by Dan Friesen

Location – Bull Creek Catchment, City of Canning

PROJECT OVERVIEW

Brolga Lake forms part of the Bull Creek Catchment and is a small project funded through SALP where SERCUL has partnered with the City of Canning to re-engage the local community in environmental activities to restore the lake and improve water quality outcomes for the Bull Creek Catchment.

2884 PLANTS INSTALLED

.5 HA WEED CONTROL

HOSTED COMMUNITY PLANTING EVENT

GATHERED INTEREST IN FORMING A 'FRIENDS OF' GROUP

Kindly supported by SALP and supported by the City of Canning and local residents

BOORAGOON AND BLUE GUM LAKES

Coordinated by Dan Friesen and Russell Walczak

Location – Booragoon and Blue Gum Lakes, City of Melville

PROJECT OVERVIEW

SERCUL is working directly with the Friends of Booragoon and Blue Gum Lakes to help them conserve and protect the wetlands of Booragoon and Blue Gum Lakes. The group aims to maintain the biodiversity values of the Lakes by revegetating and rehabilitating the bushland, raising awareness of the importance of wetlands and monitoring the local fauna.



BOORAGOON LAKE

PROJECT OVERVIEW

SERCUL works with the Friends of Booragoon and Blue Gum Lakes to undertake restoration works to protect and enhance Booragoon Lakes' biodiversity.

The Friends of Group are managing weeds and planting native species along a section of the lake with support from SERCUL. SERCUL is managing the Japanese Peppers and weed control in partnership with the City of Melville's wetland crew.

Booragoon Lake is in its second year of Japanese Pepper eradication and is on track for complete eradication by 2019. Over 13.5 ha have been controlled for Japanese Pepper.

In partnership with the Friends of Booragoon Lakes SERCUL assisted with a community planting event where local Scouts Groups, Winthrop and Bateman, participated in the restoration of the lake.

12 110 PLANTS INSTALLED

3 HA WEED CONTROL

158 VOLUNTEER HOURS

VALUE = \$5326

BLUE GUM LAKE

Coordinated by Russell Walczak

PROJECT OVERVIEW

This project is undertaken in cooperation with the Friends of Booragoon and Blue Gum Lakes and the City of Melville. The main task at Blue Gum Lake has been removing the feral couch infestation on the lake bed and revegetating with native species to improve habitat and biodiversity.

8272 PLANTS INSTALLED

2 HA OF WEED CONTROL

2 VOLUNTEERS

22.5 VOLUNTEER HOURS

VALUE = \$758



Corporate group planting at Booragoon Lake

Kindly supported by the State NRM Program, Living Wetlands Program coordinated through Perth NRM, City of Melville, Swan Alcoa Landcare Program and Department of Biodiversity, Conservation and Attractions Parks and Wildlife Service

Beckenham Open SPACE PROJECTS

BECKENHAM OPEN SPACE WETLAND LINKAGES RESTORATION PROJECT

Coordinated by Tracy Evans

This State NRM grant was awarded to achieve substantial weed control across the Beckenham Open Space particularly concentrating around the Canning River and Yule Brook and associated wetlands with the aim of improving their linkages. Four seasonal treatments with chemical were applied during the life of the grant. This activity was also supplemented by excellent hand weeding efforts by Telstra and the Work for the Dole Team.

While this project is ongoing into the 2017-18 planting season, weed control has been very effective especially with the removal of weedy typha in the Yule Brook Lagoon. Volunteer contributions have again been excellent with hand weeding playing a very important and successful role in weed management. It is noted that many of the smaller herbaceous plants (Centella and Lobelia) have started to regenerate in areas along the floodplains. A total of 5242 native plants were installed.

5.4 HA OF WEED CONTROL
45 VOLUNTEERS
392 VOLUNTEER HOURS
VALUE = \$13 197

Kindly supported by the State NRM Program

YULE BROOK FORESHORE RESTORATION PROJECT

Coordinated by Daniel Millea
Location – Machin Place, Beckenham

PROJECT OVERVIEW

This aim of this project is to restore the vital foreshore of the Yule Brook to provide a healthy understory.

Weed control has been very effective. Volunteer contributions have again been excellent with hand weeding and the installation of plant stems. Many of the smaller herbaceous plants (Centella and Lobelia) have started to regenerate in areas along the floodplains; this is due to low chemical use along the foreshore of the Yule Brook.

1.8 HA OF WEED CONTROL
7500 PLANTS INSTALLED
94 VOLUNTEERS
538 VOLUNTEERS HOURS
VALUE = \$18 135

Kindly supported by the State NRM Program

BOWRA AND O'DEA AND MEN OF THE TREES MEMORIAL GROVES

Coordinated by John Maliunas

Weed management and site maintenance has continued over the year.

The planting season saw Sathya Sai, Bowra and O'Dea and Men of the Trees put in 5080 plants. Work for the Dole and CVA teams also contributed to the maintenance of the groves.

National Tree Day also saw the celebration of the 20 year partnership between Bowra and O'Dea and Men of the Trees with SERCUL being part of that for nine years.

Thank you to all volunteers who helped install the native plants during this season.

Kindly supported by Bowra & O'Dea, Men of the Trees and the Western Australian Planning Commission



5080 PLANTS INSTALLED
81 VOLUNTEERS
273 VOLUNTEER HOURS
VALUE = \$9203



Photos: Before and after weed control along the Canning River



Photos: Top – Sathya Sai planting, Middle – The 2017 Memorial Grove after 2016 planting, Bottom – After 2017 planting.



WATER QUALITY PARTNERSHIP PROGRAM

Coordinated by Alice Atkinson and Caitlin Conway

PROGRAM OVERVIEW

SERCUL manages multiple water quality partnership projects within key catchments of the Swan-Canning River system, the results of which allow management decisions to be made to promote the health of both the river system and the water bodies within these catchments. These projects, supported by the Department of Water and Environmental Regulation (DWER, formerly Department of Water), relevant local government authorities, Department of Planning, Lands and Heritage/Western Australian Planning Commission (Whiteman Park) and the Department of Biodiversity, Conservation and Attractions (DBCA, previously Department of Parks and Wildlife), have promoted a cooperative approach to water quality monitoring. SERCUL's main roles, in conjunction with the DWER, are to: assist stakeholders to assess their water quality data requirements; prepare a Sampling and Analysis Plan (SAP) for each catchment; undertake the sampling, collate and analyse the data and produce an annual report highlighting important findings and providing recommendations.

Furthermore, SERCUL has provided assistance to DWER in the monthly water sampling and quarterly sediment and macrophyte sampling for three projects established as part of the Drainage Nutrient Intervention Program (DNIP). DNIP is funded through the Rivers and Estuaries Division, Department of Biodiversity, Conservation and Attractions, as part of the Healthy Catchments Program which aims to reduce nutrients from across the Swan Canning Catchment.

KEY ACHIEVEMENTS

- Five water quality partnership programs implemented: Bennett Brook catchment, City of Melville Bull Creek catchment and lakes, Bull Creek East catchment, Bannister Creek catchment and City of South Perth catchments. The annual reports for Bennett Brook, and City of Melville Bull Creek have been issued and draft reports for the remaining catchments are currently under review.
- Eight partnerships with LGAs - City of Bayswater, City of Melville, City of Swan, City of South Perth, City of Canning, and other agencies including Whiteman Park, DWER and DBCA.
- The data has been providing information for the implementation of DBCA Rivers and Estuaries Division local WQIPs and for the expansion of the DWER's Water Information (WIN) database.
- Budgets were prepared and accepted by the stakeholders for three of the five current water quality programs (Bennett Brook catchment, City of Melville Bull Creek catchment and lakes and City of South Perth catchments) in the 2017-18 monitoring period. Sampling and Analysis Plans and safety plans have been prepared and registered with the Department of Water and Environmental Regulation.
- Assisted DWER with water, sediment and macrophyte monitoring at three DNIP projects: Anvil Way Compensation Basin, Liege Street Wetland and Wharf Street Constructed Wetland.

5 CATCHMENTS

3 DNIP PROJECTS

31 SAMPLING EVENTS

103 SAMPLE SITES

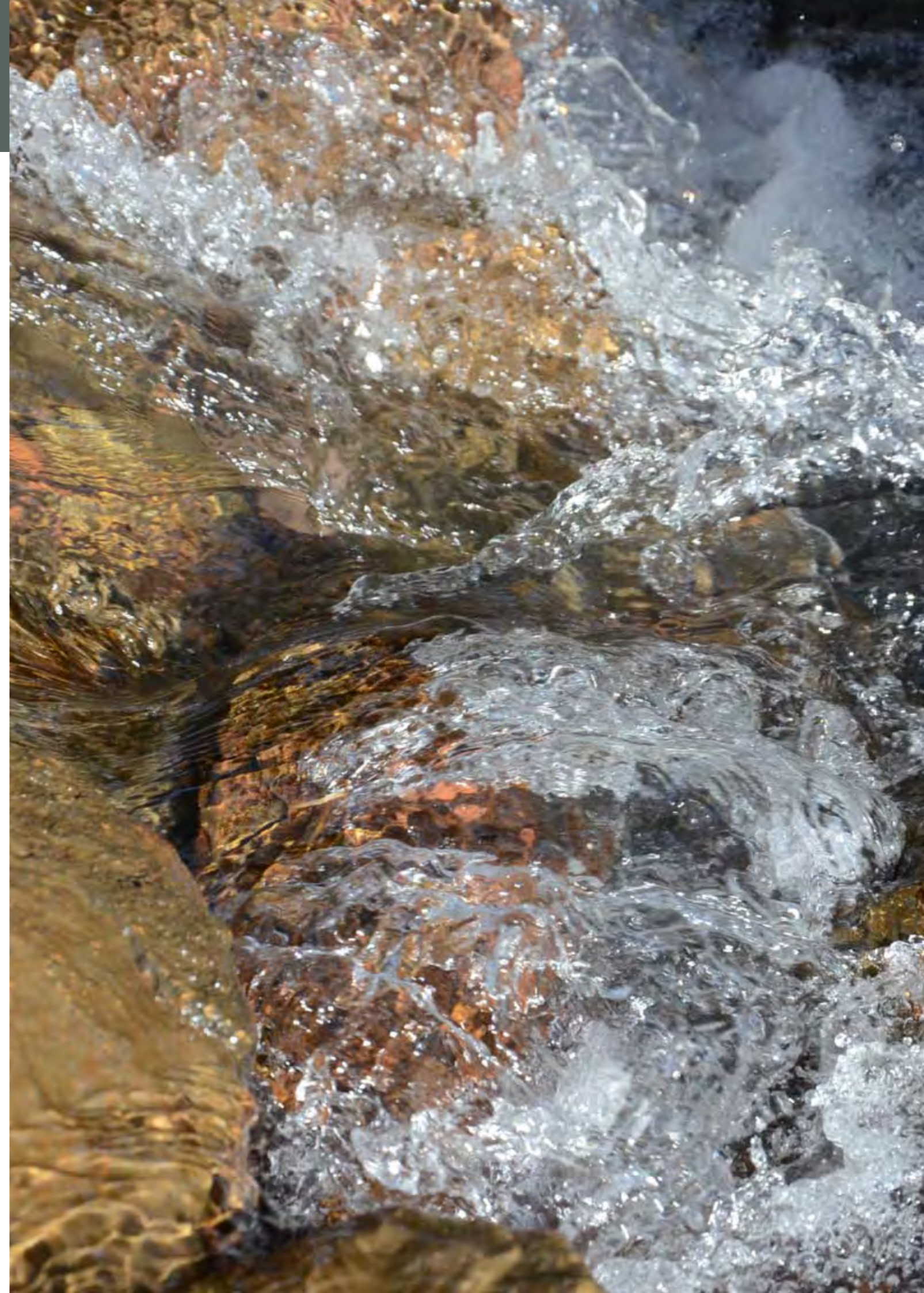
460 WATER SAMPLES
COLLECTED

53 SEDIMENT
SAMPLES COLLECTED

48 MACROPHYTE
SAMPLES COLLECTED

VALUE = \$236 000

Kindly funded by: Cities of South Perth, Bayswater, Swan, Melville and Canning and Whiteman Park (WAPC) and supported by Department of Biodiversity, Conservation and Attractions, Rivers and Estuaries Division and Department of Water and Environmental Regulation



Managing Mosquitoes with **RESTORATION**

HABITAT REHABILITATION AND SALT MARSH MOSQUITO MANAGEMENT IN THE CANNING RIVER REGIONAL PARK TIDAL FLATS

Coordinated by Dr Rose Weerasinghe, Caitlin Conway and Glen Byleveld

PROJECT OVERVIEW

The aim of this project is to meet the needs of both vector mosquito control and ecosystem management of the unique Canning River Regional Park (CRRP) tidal flats for the benefit of the community by improving human and environmental health. Two degraded saltmarsh areas close to the Adenia Lagoon, identified with high mosquito breeding have been selected for the experimental pilot study (Figure 1).

The project investigates the pre and post structural characteristics and ecological variables which influence mosquito development and generate information on the impacts of this mosquito control method on CRRP saltmarsh habitats. The restoration of the salt marsh will increase tidal influx which could greatly improve the coverage of native samphire communities, macroinvertebrates, other fauna and ecology of the salt marsh ecosystem. This method of mosquito control has been demonstrated internationally to operate effectively through a combination of flushing, increased predation and reduced oviposition (laying of eggs by mosquitoes).

KEY ACHIEVEMENTS

- Installed four groundwater monitoring wells (standpipes), set up vegetation transects and quadrats at both study sites (A and B).
- Mapped the basic information of pools, depressions, native and invasive vegetation communities, tidal patterns and natural tidal creeks/channels within the sites.
- The following existing conditions at study sites within the Adenia saltmarsh were monitored:

Monthly:

- Groundwater level, pH and conductivity in wells at lower and upper marsh locations (Figure 2);
- Mosquito larval counts, and the composition of other macroinvertebrates, in pools and edge of the lagoon;
- Pool water depths;

In September 2016 and June 2017:

- Vegetation species composition and abundance in demarcated 1 m² plots;

On occasion:

- Physicochemical data (pH, conductivity, temperature and dissolved oxygen) of water in pools and the lagoon;
- Tidal movements at high tide times;
- Mosquito larval counts.

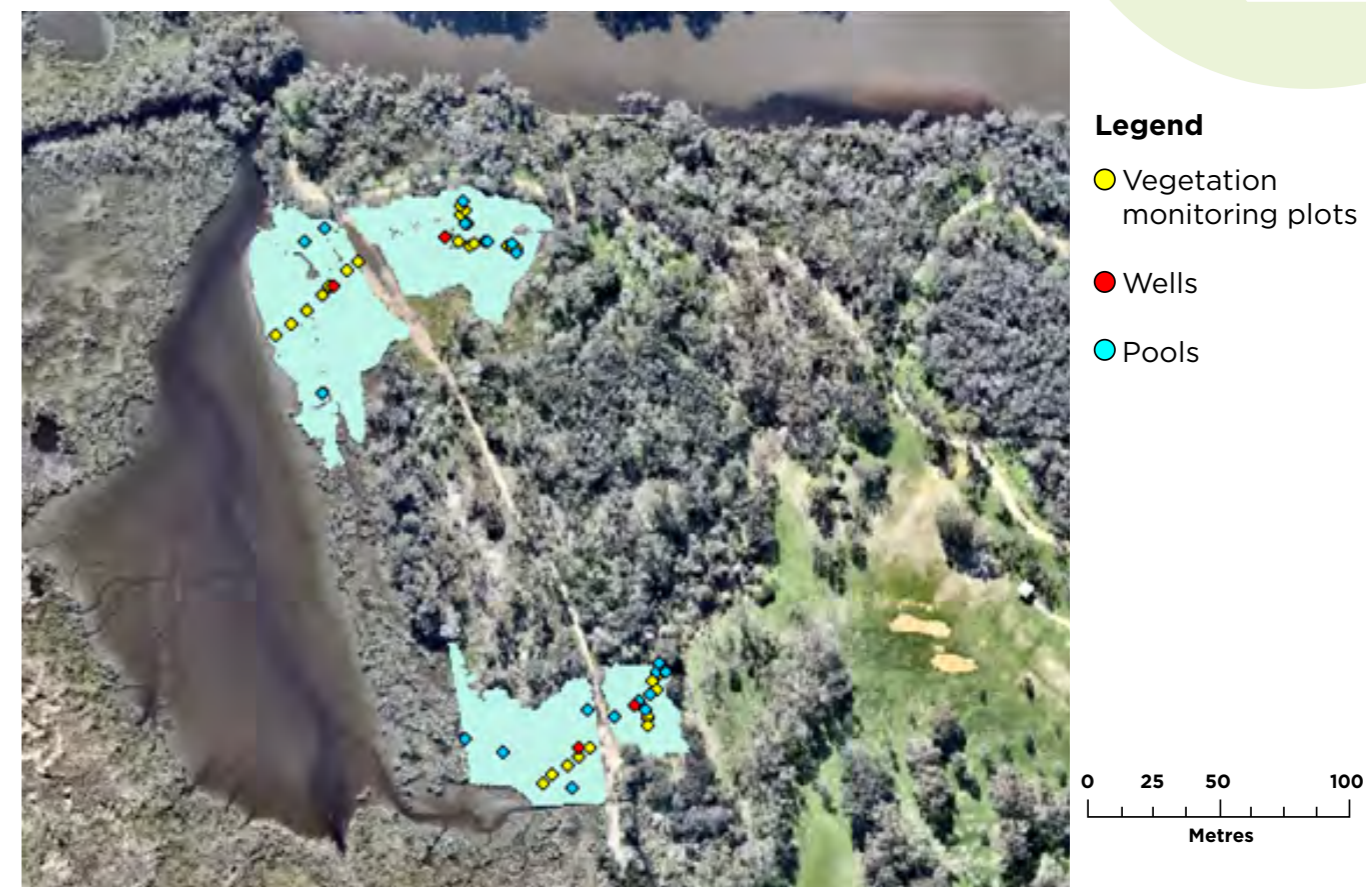


Figure 1. Ground water wells, vegetation monitoring plots and pool locations in Sites A and B of Adenia saltmarsh.

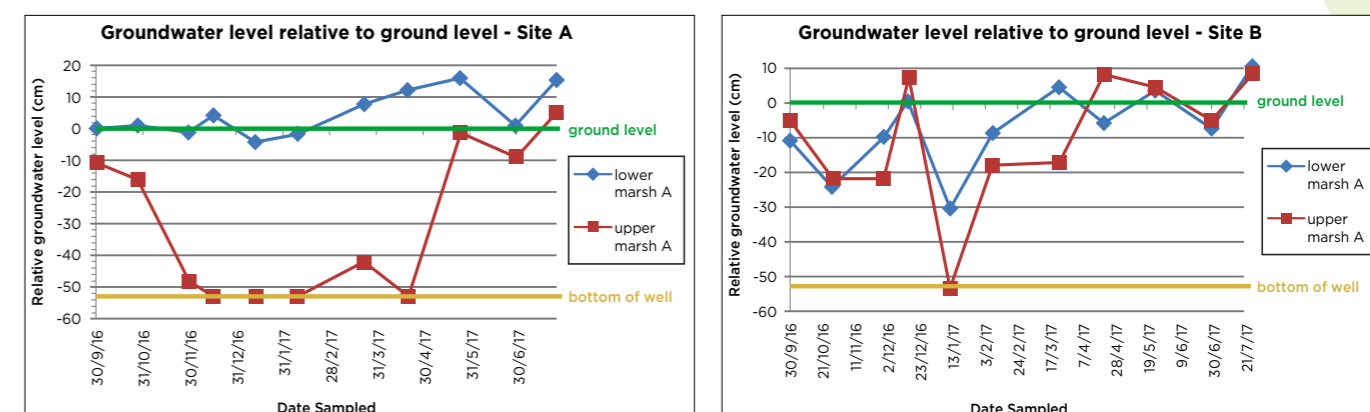


Figure 2. Groundwater level in wells at Sites A and B. The difference in groundwater depth between the upper and lower marsh in Site A is much greater.

Kindly supported by Lotterywest and State NRM Community Action Grants

Horley Road Wetland BIOMONITORING

Coordinated by Dr Rose Weerasinghe and Anneliese Bone

PROJECT OVERVIEW

This research project was developed to understand the fluctuations in the density of mosquito larvae and their predators and competitors' composition in temporary wetlands. Yule Brook Wetland and Horley Road Wetland in Beckenham were selected for the assessment. The monitoring of the Yule Brook Wetland has been completed and the monitoring of the Horley Road Wetland commenced in June 2016.

SPECIFIC OBJECTIVES

- To collect baseline data (water quality, density of mosquito larvae and other macroinvertebrates, vegetation composition and general observation of terrestrial fauna) of the Horley Road Wetland;
- To record ecological changes that may be occurring in the wetland;
- To collect data that will contribute to a better understanding of this system, as well as similar systems;
- To improve our understanding of mosquito breeding and their development in wetlands/stormwater basins; and
- To provide an opportunity for University and TAFE students to participate and learn ecological monitoring and analysis.



KEY ACHIEVEMENTS

- Baseline biomonitoring and analysis was completed with University and TAFE students. The following parameters of the wetland were monitored monthly from the period of inundation to dry:
 - Mosquito larval counts, other macroinvertebrate richness and abundance (Figure 1);
 - Water depth (Figure 2);
 - Physicochemical data of water (pH, conductivity, temperature and dissolved oxygen); and
 - General observation of birds, frogs and terrestrial fauna.
- Collected native and exotic vegetation composition in demarcated 1 m² plots.
- Data submitted to the Department of Biodiversity, Conservation and Attractions (DBCA).

The data showed that the Horley Road Wetland is a rare wetland in this area, as it has not been infested by the introduced Mosquitofish (*Gambusia holbrooki*). From a conservation perspective, the Horley Road Wetland provides a safe breeding ground for frogs, habitat for other diverse wildlife and acts as a comparative model wetland to understand typical macroinvertebrate composition in temporary wetlands in the Perth Region.
- Horley Road Wetland was recognised as a 'Western Australian State Government Conservation' management category wetland in Canning River Plains UFI 14901 (Geomorphic Wetlands Swan Coastal Plain dataset) and listed under Healthy Wetland Habitats Program by DBCA.
- Successfully attracted restoration funding support from the DBCA.
- An agreement was struck between the DBCA and SERCUL to acknowledge the commitment to the conservation of the Horley Road Wetland located at the Beckenham Open Space.
- Restoration activities have commenced.

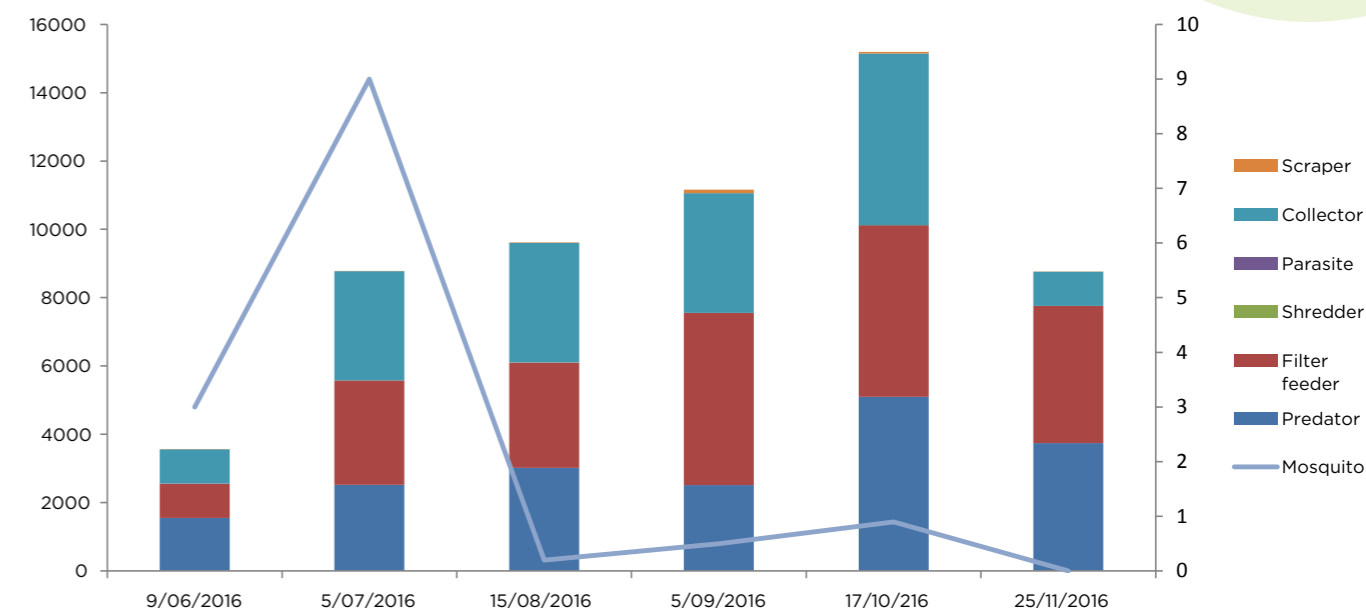


Figure 1. Total macroinvertebrate abundance in relation to their feeding categories and fluctuation of mean mosquito larval numbers in Horley Road Wetland during inundation period, 2016.

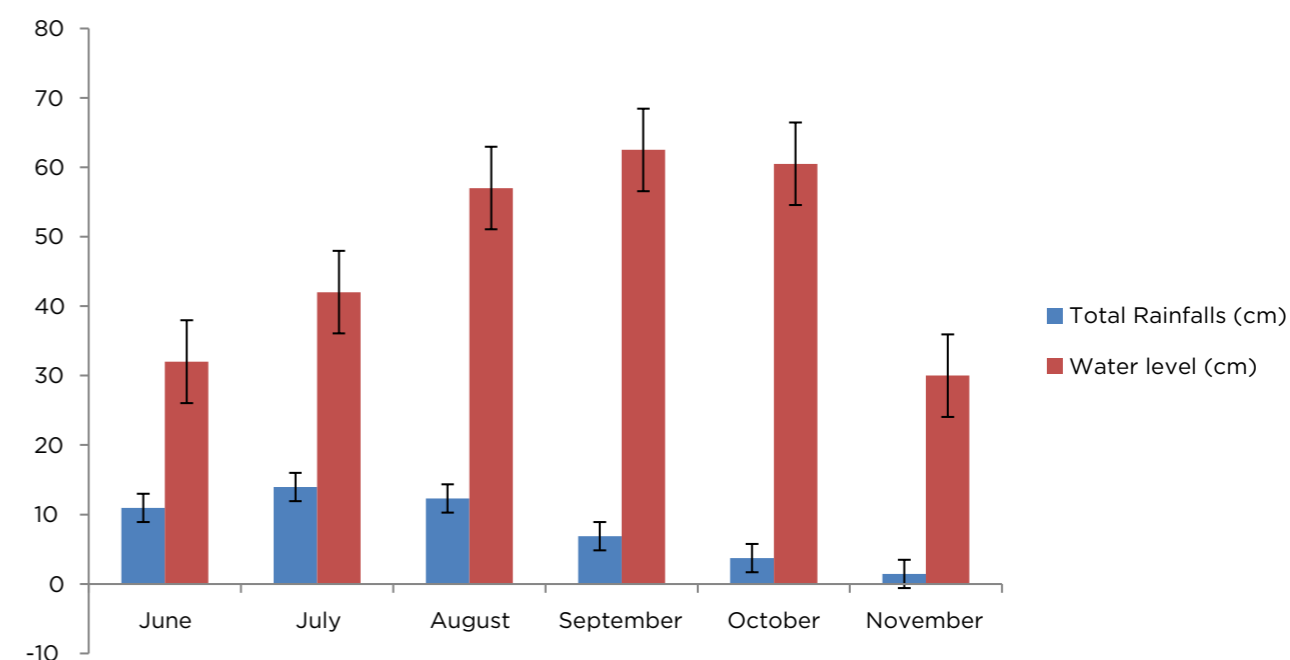


Figure 2. Water level changes of the wetland in relation to the total rainfall of Perth Region, 2016. Rainfall data from Bureau of Meteorology WA, 2016.

Kindly supported by Healthy Wetland Habitats Program, Department of Biodiversity, Conservation and Attractions.

W F DAWSON & ASSOCIATES

Chartered Accountants



Chartered
Accountants

INDEPENDENT AUDITOR'S REPORT TO THE MEMBERS OF SOUTH EAST REGIONAL CENTRE FOR URBAN LAND CARE INC (SERCUL)

Scope

I have audited the financial statements of **SERCUL** which has been classified as a non general purpose account, for the year ended 30 June 2017.

The Association's committee is responsible for the preparation and presentation of the financial statements. The information the statements contain and the accounting policies used are determined by the committee so as to meet the needs of the members. I have conducted an independent audit of these accounts in order to express an opinion on them to the members.

I disclaim any assumption of responsibility, for any reliance on this report or these accounts, to any person other than the members, or for any purpose other than for which they were prepared.

My audit has been conducted in accordance with Australian Auditing Standards to provide reasonable assurance as to whether these accounts are free of material misstatements. My audit procedures include an examination, on a test basis, of evidence supporting the amounts shown in these accounts. These tests have been undertaken to form an opinion as to whether, in all material respects, these accounts are fairly presented.

My audit opinion expressed in this report has been formed on this basis.

Audit Opinion

In my opinion, the financial statements present fairly the operating results of **SERCUL** for the 2016/2017 financial year and its financial position at 30 June 2017.

Signature of Auditor:

Name of Auditor:

WARREN FRANCIS DAWSON ACA ACIS

7 September 2017

Principal: Warren F Dawson ACA ACIS
Level 3, Suite 17, 30 Haasle Road, OSBORNE PARK WA 6017
Correspondence - PO Box 2063, Churchlands WA 6018
Telephone: (08) 9244 5560 Facsimile: (08) 9244 6516 Mobile: 0411 329 748
A.B.N.: 30 002 694 173
Email: warrendawson@gmail.com
(Liability limited by a Scheme approved under Professional Standards Legislation)

In reviewing the operations during the 2016-17 financial year we have recognised income through three main areas; grant projects, partnership projects and service delivery. We define grant projects as typically not providing funding for officer time to coordinate the project, the funding is received in advance and there is a requirement for a significant in-kind value aiding in delivering the grant in accordance with the funding agreement. Partnership projects are a coordinated delivery by multiple organisations. The funding is received in advance and covers the costs associated with the delivery of the project. A significant in-kind value adding is delivered through the coordinated approach and delivery of the project. Service delivery is undertaken to generate income for the organisation to support the otherwise unfunded outcomes outlined in the vision and mission of the association.

During the 2016-17 financial year a total of \$421 400 in grant funding was received toward project implementation and delivery. A further \$1 191 458 was received to implement partnership projects and \$600 083 was generated through the delivery of services. Our operational delivery during 2016-17 has been a combination of delivering on existing commitments which roll over from the previous financial year (from grants \$244 288 and partners \$626 855) and delivery on new commitments made during this financial year. Grant funded projects comprised 20% of the operational delivery, partnership projects comprised 54% of the operational delivery, services comprised 14% of the operational delivery and the remaining 12% corresponded to the operational costs of the organisation.

When comparing the 2016-17 financial year to the previous financial year there has been an increase in expenditure for partnership delivery. This was primarily driven by the implementation phase of the Swan-Canning River Recovery Program - Hydrocotyle Project, the completion of the Brentwood Main Drain Project and delivery of the Work for the Dole Program.

The Hydrocotyle Project involved a significant amount of effort to access, map and remove Hydrocotyle and other associated weeds from the floodplains and tributaries of the Canning River. The Brentwood Main Drain Project saw the final stages of construction and restoration of this site undertaken during the year. There has also been an increase in expenditure for grant funded project delivery. This was primarily due to an increase in requests from community groups for auspicing support for the delivery of grant funded projects they were undertaking. Through this model SERCUL receives the funds, for which the smaller community group are not eligible to receive. SERCUL then supports the group to implement the projects.

At the end of the financial year SERCUL had a deficit of \$43 381 however SERCUL had \$168 083 in open invoices for works completed and expended \$86 162 commencing the delivery of grants, partnerships and services projects for which invoices were to be raised. The organisation operates to deliver towards the vision and mission of the association and is operating at capacity to do so.



12:30 PM
21/09/17
Accrual Basis

South East Regional Centre for Urban Landcare
Balance Sheet
As of June 30, 2017

	Jun 30, 17
ASSETS	
Current Assets	
Chequing/Savings	
Bendigo Term Inv. 136641388	5,000
Bendigo working a/c 136248010	128,585
BendigoTerm Inv. 141340877	875,950
Petty Cash	145
Petty cash - PAP	64
Public Env.Fund 147844088	502
Social Inv Acct 155528896	441,228
Total Chequing/Savings	1,451,473
Accounts Receivable	
Accounts Receivable	168,083
Total Accounts Receivable	168,083
Other Current Assets	
Prepaid Project Expenses	86,162
Total Other Current Assets	86,162
Total Current Assets	1,705,718
Fixed Assets	
Computer Equipment	2,072
Motor Vehicle at cost	27,508
Office Equipment	1,547
Plant & Equipment	31,274
Total Fixed Assets	62,401
TOTAL ASSETS	\$1,768,118
LIABILITIES	
Current Liabilities	
Accounts Payable	
Accounts Payable	-352
Total Accounts Payable	-352
Credit Cards	
Bendigo Bank C Card	5,279
Total Credit Cards	5,279
Other Current Liabilities	
Advance Payments	15,670
Grants Received in advance	540,367 *
Mobile Allowance Accrued	60
Payroll Liabilities	69,889
Provision for LSL and AL	166,286
Tax Payable	29,886
Travel Allowance Accrued	136
Wages and Salaries Accrued	28,125
Total Other Current Liabilities	850,418
Total Current Liabilities	855,345
TOTAL LIABILITIES	\$855,345
NET ASSETS	\$912,773
EQUITY	
Retained Earnings	919,004
Net Income	-6,231
TOTAL EQUITY	\$912,773

12:28 PM
21/09/17
Accrual Basis

South East Regional Centre for Urban Landcare
Profit & Loss
July 2016 through June 2017

	Jul 16 - Jun 17
Ordinary Income/Expense	
Income	
ADMINISTRATION	159,726
Approvals/Construction/Consult	133,634
Bank Interest-Public Env. Fund	23
Community Driven Restoration	126,394
EDUCATION DELIVERY	61,927
Employment.	-4,513
Insurance Partnership	1,631
Laboratory Costs	57,659
LANDCARE DELIVERY	1,330,264
LSL Partnership	6,451
PROJECT MANAGEMENT	1,056,882
Public Environmental Fund	0
SCRRP-Hydrocotyle Part B	156,426
SCRRP-Hydrocotyle Part C	67,057
SCRRP Bull Creek	26,758
SRT- Brentwood Living Stream.	129,513
SRT-Tom Bateman Res.	7,253
Vehicle & Landcare Maintenance	889
Water Corp. UWR	15,000
Total Income	\$3,332,974
Gross Profit	\$3,332,974
Expense	
ADMIN & GOVERNANCE	5,826
ADMINISTRATION.	189,344
Approvals/Construction/Consulta	109,405
Community Driven Restoration.	126,394
Depreciation Expense	29,349
EDUCATION DELIVERY.	-2,574
Educational Operations.	27,405
Employ & opera expense-projects	-1,287,640
EMPLOYMENT-	1,609,862
Environmental ProjectOperating.	-2,652
Healthy Rivers 15 -16	648
Laboratory Costs.	50,588
LANDCARE DELIVERY.	779,744
LANDCARE OPERATION	452,880
Leave entitlement provision	63,995
LSL Partnership.	6,451
Planning & Construction.	5,500
PROJECT MANAGEMENT.	556,345
SCRRP-Hydrocotyle-Part C	64,855
SCRRP-Hydrocotyle Part B.	158,628
SCRRP Bull Creek.	26,800
SRT Brentwood Living Stream	136,700
SRT Tom Bateman Res.	7,253
Vehicle & Landcare Maintenance.	62,582
VEHICLE OPERATION	88,643
Water Corp UWR	15,000
Water Quality Partnership.	8,507
Total Expense	\$3,289,840
Net Ordinary Income	43,135
Other Income/Expense	
Other Expense	
Asset purchases-Computers	0
Asset purchases-Motor Vehicles	13,636
Asset Purchases - Plant & Equip	35,730
Other Expenses	0
Total Other Expense	49,366
Net Other Income	-49,366
Net Income	-\$6,231



STATEMENT BY THE MANAGEMENT COMMITTEE
SOUTH EAST REGIONAL CENTRE FOR URBAN LANDCARE (INC.)

In the opinion of the Members of the Committee;

- (a) The accompanying Profit and Loss Statements are drawn up so as to give a true and fair view of the results of the Group for the year ended 30th June 2017.
- (b) The accompanying Balance Sheet is drawn up so as to give a true and fair view of the state of affairs of the Group as at the end of that period.
- (c) At the date of this statement there are reasonable grounds to believe that the Group will be able to pay its debts as and when they fall due.

The Accounts of the Group have been prepared in accordance with the applicable Australian Accounting Standards.

Signed in accordance with a resolution of the Committee.


Max Houghton
Treasurer

Date: 20th September 2017


Patricia Hart
Chairperson

Date: 20th September 2017

1 Horley Road, Beckenham, WA 6107 | T (08) 9458 5664 | www.sercul.org.au

WOODLUPINE BROOK RESTORATION PROJECT

Woodlupine Brook runs from the hills in Kalamunda through Forrestfield to Yule Brook near the junction of Welshpool Road and Roe Highway.

A section of Woodlupine Brook between Strelitzia Avenue and Dawson Avenue in Forrestfield has had a Hydrology Report completed with some restoration design included. The local community are concerned about the increasing risk of loss of large trees in the upper reaches of this section of the brook near the Forrestfield shopping complex. SERCUL are providing some coordination assistance to bring all the stakeholders together during planning. The project has already attracted the local shopping centre owner, Hawaiian, who would like to contribute to the restoration project. The stakeholders involved are Water Corporation; City of Kalamunda; Department of Water and Environmental Regulation; Department of Biodiversity, Conservation and Attractions; Friends of Woodlupine Brook and SERCUL.

We look forward to attracting further funding to improve the biodiversity and stabilisation of this beautiful section of the Woodlupine Brook.



Section of the degraded Woodlupine Brook in Forrestfield

ABLOUTION SOLUTION

SERCUL has been awarded a \$50 000 grant from the Department of Communities to build an Amenities Block on the Yule Brook Homestead site in Beckenham.

The Amenities Block will contain male, female and disabled toilets using Clivus Multrum waterless composting toilets and will be available for use by people attending community events and workshops at the SERCUL site.

YAGAN RESERVE

SERCUL has successfully attracted State NRM funding in partnership with the Canning River Residents Environment Protection Association (CRREPA), the Friends of Bull Creek Catchment (FOBCC) and the City of Canning in order to continue to improve the natural habitat values and nutrient stripping capacity of the Bull Creek Catchment. This project will manage priority weeds, revegetate a section of the creek line and host a joint planting event for the FoBCC and CRREPA.

ALISON BAIRD FLORA RESERVE

Alison Baird Flora Reserve is a vital repository of biodiversity being part of the most species rich Bush Forever Site (BFS-387) on the Swan Coastal Plain. It is currently threatened by changes in the catchment, surrounding land uses (industrial) and the early stages of incursion of numerous aggressive introduced species. If not managed these species threaten to significantly reduce the overall biodiversity within the reserve replacing rare and threatened species. In partnership with the Friends of Alison Baird Flora Reserve and UWA we will improve resilience through implementation of a regular weed management program and restoration of wetland habitats. Project funded by Swan Alcoa Landcare Program.

Acknowledgement OF PARTNERSHIPS

The success of the South East Regional Centre for Urban Landcare's project delivery is a direct result of financial and in-kind contributions from the following Australian Government Departments, WA State Government Departments, Natural Resource Management Organisations, private businesses, Local Governments and community groups. We would like to acknowledge and sincerely thank you for your assistance over the 2016-17 year.



THANK YOU

The care and protection of the Natural Resources of the South Region can only happen with the ongoing support of community groups, non-Government organisations, volunteers, Local Government Authorities, State and Australian Government Departments and private business project partners.

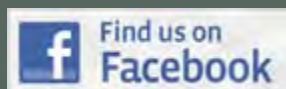
The South East Regional Centre for Urban Landcare Executive Committee and staff sincerely thank you all and look forward to continuing our partnerships in 2017-18 to achieve an even more sustainable approach to Natural Resource Management in Perth, Western Australia.

Good luck for 2017-2018



South East Regional Centre for Urban Landcare

1 Horley Road
Beckenham, WA
Ph: (08) 9458 5664



www.sercul.org.au