

### LONG-NECKED TURTLE —

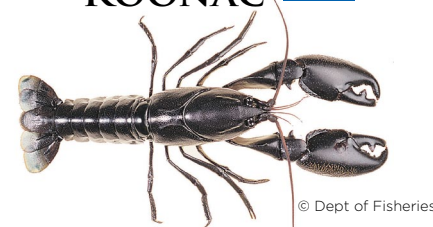


*Chelodina colliei*

**Distribution:** Hill River to Susetta River  
(Fitzgerald River National Park)

**Conservation status:** NEAR  
THREATENED (IUCN Red List 1996)

### KOONAC —



*Cherax preissii*

**Distribution:** Moore River to just  
east of Albany

**Conservation status:** Not listed

### GILGIE —

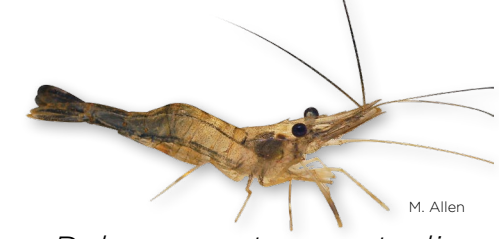


*Cherax quinquecarinatus*

**Distribution:** Widespread from  
Moore River in the north to just east  
of Albany

**Conservation status:** Not listed

### GLASS SHRIMP —



*Palaemonetes australis*

**Distribution:** Found throughout the  
lower west coast and south-west  
coast of Western Australia

**Conservation status:** Not listed

### WESTERN SWAMP TORTOISE ●



*Pseudemydura umbrina*

**Distribution:** Ellen Brook and Twin  
Swamps, Perth

**Conservation status:** CRITICALLY  
ENDANGERED (EPBC Act 1999)

# FRESHWATER MACRO-FAUNA of south-western Australia

### SMOOTH MARRON —



*Cherax cainii*

**Distribution:** The most widespread  
of the Cherax species occupying  
a range from Hutt River to the  
Esperance region

**Conservation status:** Not listed.  
Recreational marron fishery  
managed by the Department of  
Fisheries WA

### GLOSSY KOONAC —



*Cherax glaber*

**Distribution:** Found only from  
Dunsborough to Windy Harbour

**Conservation status:** Not listed

Margaret  
River

Albany

### HAIRY MARRON —



*Cherax tenuimanus*

**Distribution:** Restricted to upper Margaret River

**Conservation Status:** CRITICALLY  
ENDANGERED (EPBC Act 1999/DPaW/IUCN)

### YABBIE (FERAL) —



\**Cherax destructor*

**Distribution:** A number of rivers from  
the Hutt River to the Esperance region

### RESTRICTED GILGIE —



*Cherax crassimanus*

**Distribution:** Restricted to southern  
coastal rivers from Margaret River  
to Walpole

**Conservation status:** Not listed

### RAKALI — (WATER RAT)



*Hydromys chrysogaster*

**Distribution:** Moore River to  
Jerdacuttup River

**Conservation status:**  
PRIORITY 4 (DPaW); Least  
Concern (IUCN)