



SERCUL
ANNUAL REPORT
2016

Community improving the health of our land and waterways



CONTENTS

Highlights for 2015–2016	3
Achievements for 2015–2016	4
From the Chair–Pat Hart	5
From the CEO–Brett Kuhlmann	6
SERCUL Constitution	7
NRM Organisational Structure in Perth	8
SERCUL Staff and Committee 2015–2016	9
SERCUL Structure	10
SERCUL NRM Program Areas	10
Education and Community Support	11–16
Landcare and Restoration	17–28
Community Groups	29–34
Environmental Services	35–36
Monitoring and Research	37–40
Auditor’s Report	41
Cash Flow Summary	42
Financial Report	43–45
Statement by the Management Committee	46
New Projects for 2016–2017	47–48
Acknowledgement of Partnerships	49
Thank You	50



2015-16 HIGHLIGHTS & FEEDBACK

AWARDS

Winner of the 2015 **WA Landcare Award for Australian Government Partnerships with Landcare**. SERCUL was a finalist in the National Landcare Awards 2016 in the Australian Government Partnerships with Landcare Award.

The Department of Parks and Wildlife, City of Canning and SERCUL won the **Stormwater WA Award for Excellence in Research and Innovation** for Wharf Street Wetland and Civic Parklands.

The Department of Water and SERCUL won the **Grahame Heal Water Sensitive Urban Design Award** at the Western Australian Water Awards for the Urban Waterways Renewal Project.



CAM CLAY RESERVE

Cam was a valued inaugural Treasurer of SERCUL who sadly past away in 2014. In honour of Cam's contribution to urban landcare through the Armadale Gosnells Landcare Group and SERCUL, a reserve has been named in his honour in the City of Armadale. The opening ceremony for the naming of Cam Clay Reserve was held in April 2016.

"Congratulations to SERCUL for winning the Australian Government Partnerships with Landcare Award, which is a testament to the hard work and continued effort over many years of your organisation and the many, many volunteers that contribute their time to a wide range of landcare projects."

Jim Sharp
Director General
Department of Parks and Wildlife

"Thank you for acknowledging the long term partnership that SERCUL has with the Department of Parks and Wildlife and previously the Swan River Trust, particularly in relation to a wide range of projects focussing on improving the health of the Canning River and its catchment. Such partnerships are valuable in delivering on-ground actions that protect and improve the management of our natural areas, plants and animals."

Albert Jacob MLA
Minister for Environment; Heritage



ACHIEVEMENTS for 2015-2016

\$ 887 446
Total value of volunteering

26 326
hours
of volunteer contribution



Value of Volunteering \$33.71/hr
(From Volunteering WA and the
Department of Local Government
and Communities)



119 Waterway
sample sites

549 Samples collected in
the Perth Region



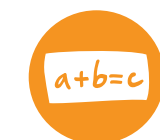
236 474
Plants installed



16 859
People received education,
via direct information or
on-ground contact



84
Community on-ground
restoration work days



139
Schools engaged in
on-ground activities and
environmental education



17 Friends of Groups engaged

FROM THE CHAIR—*Pat Hart*



As SERCUL works through our thirteenth year, we continue to ensure that all projects and programs meet the objectives of our Constitution. These objectives were identified and agreed to by all our members at conception and we continue to ensure these objectives are being met in all our activities. Within this Annual Report you will see photographic evidence and reports of the many individual projects that all work towards meeting our objectives.

We are very fortunate that during 2015-16 SERCUL has been nominated and has won a number of awards based mainly around partnerships. The background of most of these awards is based around our Urban Waterways Renewal Project that goes back over numerous years but its influence continues today. Its success is the result of great vision and commitment shown by our previous CEO Julie Robert and supported by the very enthusiastic and dedicated SERCUL staff. Today we see the long term positive outcomes and the many partnerships we formed throughout that project continuing. We also see the ongoing influence of Julie Robert who now leads our special projects.

A new exciting program is SERCUL's partnership with Yelakitj Moort Noongar Association to present the Booyi Cultural Program. An exciting, interactive educational program that celebrates the understanding and appreciation of Aboriginal and Torres Strait Islander histories and cultures. We are so fortunate to have Marie Taylor, a greatly respected aboriginal leader

of the local Noongar people, as a member of our Executive Committee who initiated this wonderful program. In the future we hope to expand this program to take in the broader community and look into working in partnership with local government and others to implement components of the Marli Plan.

Our Mozzie Wise project led by Dr Rose Weerasinghe is another excellent initiative that sees great partnerships with the Department of Health and numerous local governments. This project also links to a number of other objectives including identifying priority issues, biodiversity, research and education.

Our Education Program led by Amy Krupa has expanded beyond SERCUL's catchment to cover many environmental topics and is being delivered in the metro and beyond.

I wish to thank all those that have partnered with SERCUL over the past years for their confidence in us. We hope these relationships will continue into the future. In particular I would like to thank Rod Hughes and the Rivers and Estuaries Division of DPaW for their ongoing strong support which is very much valued. To all the community environmental groups, volunteers and SERCUL committee, thank you for your commitment to our environment.

To all the SERCUL staff who have made our organisation acknowledged and respected as NRM leaders in our sub region, you are all unsung heroes. There are no words to describe how much your commitment and dedication to SERCUL and our precious environment is appreciated.

A huge thanks to my dedicated Executive Committee who have put so much time into assisting me. Also to Brett Kuhlmann, our CEO, whose support and role is very much appreciated.


Pat Hart
Chairperson

FROM THE CEO—*Brett Kuhlmann*



The 2015-16 year has been a year of transition for SERCUL, on several fronts.

Our inaugural CEO, Julie Robert, formally resigned as the CEO of SERCUL. A sundowner event was held in acknowledgment of Julie's role and her significant effort in the development of SERCUL. The event was a chance for old acquaintances and new faces to come together and celebrate what has been achieved over the past 13 years. Julie remains involved with SERCUL in a part time role dedicated to special projects.

Sandy Wainwright is a quiet achiever within the group but her influence is beyond measure. Sandy was SERCUL's Finance Officer since inception in 2003 but retired in August 2015. Her quiet manner, attention to detail and habit of burning incense had a stabilising and calming effect upon everyone. Not long after retiring, Sandy took up the role of Chair for the Bannister Creek Catchment Group and we are fortunate to have Sandy dropping in from time to time.

I wish to acknowledge Geoff Pettifer and his contribution as a member of the Executive Committee. Geoff stepped down from the Committee, following personal plans to move internationally. I wish to thank Geoff for his personal input into the group and for sharing his experience, insights and aspirations for natural resource management in our region.

We are extremely fortunate to have Marie Taylor joining the SERCUL Executive Committee before

the start of this financial year. Marie is a well known and respected Noongar Elder. She brings a different perspective to the organisation with an amazingly diverse experience and understanding of culture, engagement and education. Marie's wealth of knowledge, experience and many contacts has led to the development of the Booyi Cultural Program. The Booyi Program is an education and engagement program which cultivates connection with the land and understanding and care for the area in which we live.

Finally we have two new community members who have expressed interest in joining the Executive Committee for the coming year. It is heartening to see the passion for our environment and our community is alive and well.

There have been increasing requests for support from community groups throughout the past year. We have been working to consolidate our financial base in order to continue to provide the support that is needed.

Managing a level of financial stability has been a key focus of the past financial year. The merger of our key partner, the former Swan River Trust, with the Department of Parks and Wildlife was a key concern. The 2016-17 financial commitments to the sub regions from the Department of Parks and Wildlife is the first time these contributions have undergone the whole of department budget assessment under the new structure. We are fortunate to have the ongoing support for the sub regions through the Department of Parks and Wildlife. We wish to thank the department and the individuals who advocated on behalf of the sub regional support model.

During the coming year we will be engaging with our members and stakeholders in sculpting a shared strategic direction for the Association. There are still many challenges and it is only through a whole of community engagement that we will achieve the vision of health and sustainability of our waterways and natural areas.



Brett Kuhlmann
Chief Executive Officer



VISION

To have, as a given, the natural resources of the South Region of Perth managed in a healthy and sustainable manner by all stakeholders for future generations.

MISSION

The aim is to use integrated Natural Resource Management to develop cultural change in how the community views and interacts with the environment while promoting and actively participating in the improvement of the health of waterways and other ecosystems within the South Region.

OBJECTIVES

- To identify priority Natural Resource Management issues in the South Region in partnership with Local Government, State Government and industry.
- To ensure biodiversity within the South Region is monitored, protected and enhanced.
- Assist community, State and Local Government in the coordination of Natural Resource Management in the South Region.
- Support and encourage the implementation of best management practice of natural resources within the South Region.
- Recognise and embrace Aboriginal, cultural and natural heritage.
- Foster research on matters relating to the South Region's natural and cultural heritage.
- Work in partnership with Local Government, State Government and industry to educate the wider community to protect our natural resources.
- Support and encourage the formation and training of community environment groups.
- Support the development and implementation of projects that occur outside the South Region that align with and benefit the delivery of the SERCUL objectives.
- Administer the South East Regional Centre for Urban Landcare Inc. funds to promote the objectives and outcomes of the Association.



SERCUL, as an incorporated, independent community environmental organisation, we are able to bring together the community, State and Federal Government agencies, Local Governments, businesses and educational institutions to plan for, develop and implement projects that will improve the natural environment using a strategic and integrated approach.

SERCUL is a sub-regional organisation that operates within the metropolitan and peri-urban areas of the Canning River Catchment. The area covered takes in most of the southern and eastern suburbs of Perth and includes Djarlgarro Beelie (the Canning River), the Southern-Wungong River and parts of Derbarl Yerrigan (the Swan River). This is shown on the map below:

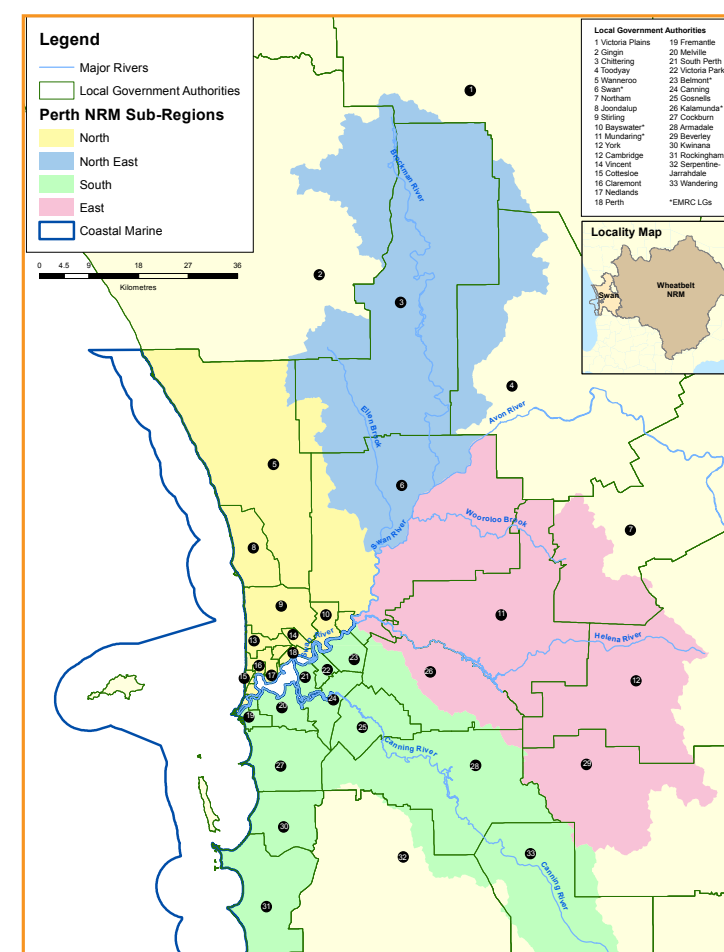
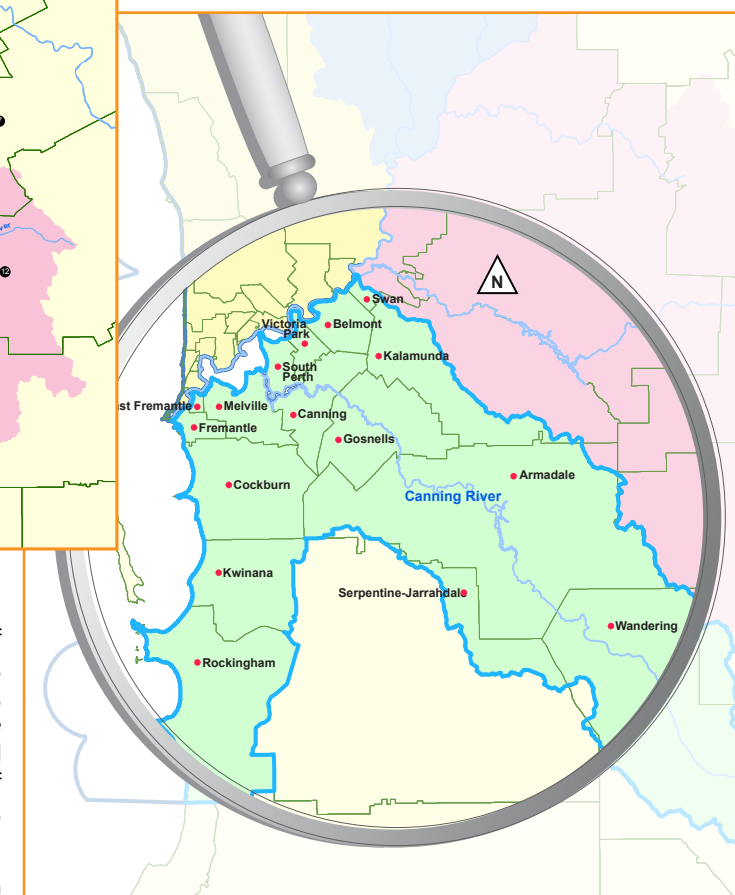


Figure 1: Division of the Swan NRM Region into five sub regions

The South Region is defined as consisting of those parts of the Cities of Armadale, Belmont, Canning, Cockburn, Fremantle, Gosnells, Kwinana, Melville, Rockingham, South Perth, Shire of Kalamunda and Towns of East Fremantle and Victoria Park which fall within the boundary of the Swan Natural Resource Management Region.

Figure 2: South Sub Region



SERCUL STAFF AND COMMITTEE 2015-2016

STAFF EMPLOYED DURING 2015-16

Brett Kuhlmann – Chief Executive Officer

Monica Estrada – Business and Finance Manager

Sandy Wainwright – Financial Administration Manager
(*Aug 2015)

Jose Alcala – HR Payroll and Administration Officer

Matthew Grimby – Environmental Services Unit Manager

Glen Byleveld – Environmental Planner and Stormwater Officer

Julie Robert – Special Projects Manager

Amy Krupa – Education and Promotion Manager

Debra Taborda – Environmental Education Officer (*Sept 2015)

Melinda Snowball – Promotions and Graphic Design Officer

Amy Warner – Community Liaison/Landcare Officer (City of Canning) and BCCG Coordinator

Dr Rose Weerasinghe – Ecologist

Alice Atkinson – Water Quality and GIS Officer

Ditte Eden – Restoration Project Officer and Analyst (*June 2016)

Wilson Orjuela – Environmental Scientist

John Maliunas – Landcare Officer and Precinct Manager

Tracy Evans – Landcare Officer

Daniel Friesen – Landcare Officer

Daniel Millea – Landcare Officer

Klara Browne – Work for the Dole Coordinator and Volunteer Coordinator

Jakub Pyrchla – Work for the Dole Coordinator and Landcare Officer

Russell Walczak – Work for the Dole Coordinator and Landcare Officer

Paula Kalinowski – Little Green Steps WA Program Manager
(*Dec 2015)

Kylie Hosking – Little Green Steps WA Education Officer

Megan Mentz – Little Green Steps WA Education Officer

GREEN TEAM STAFF

Saw Ta Pweh

Tony Parrelli

Darren O'Brien

Russell Gorton

Andrew Owen

Thomas Shaw

Catherine Morgan

Lat Too

Daniel Barczi

Annaliese Bone

Caitlin Conway

Hayden Lindsay*

*No longer working - resigned or retired

EXECUTIVE COMMITTEE

Chair: Mrs Pat Hart

Vice Chair: Mr Marc Lane

Treasurer: Mr Max Houghton

Member: Mr Geoff Pettifer

Member: Marie Taylor

COMMUNITY COMMITTEE MEMBERS

Sallie Bryant

David James

Dick Stone

STATE AND LOCAL GOVERNMENT REPRESENTATIVES

Department of Parks and Wildlife

City of Armadale

City of Belmont

City of Canning

City of Cockburn

City of Fremantle

City of Gosnells

Town of Kwinana

City of Melville

City of South Perth

Town of Victoria Park



In August 2015 Sandy Wainwright retired after 20 years with BCCG and SERCUL. We would like to thank Sandy for her dedication and effort in making SERCUL the place it is today. The SERCUL office is not the same without her.

SERCUL STRUCTURE



To deliver our program areas SERCUL operates on three levels of delivery; Community, Partnerships and Environmental Services. Projects within these delivery models are undertaken to enable SERCUL to meet our objectives and ensure our vision is being achieved.

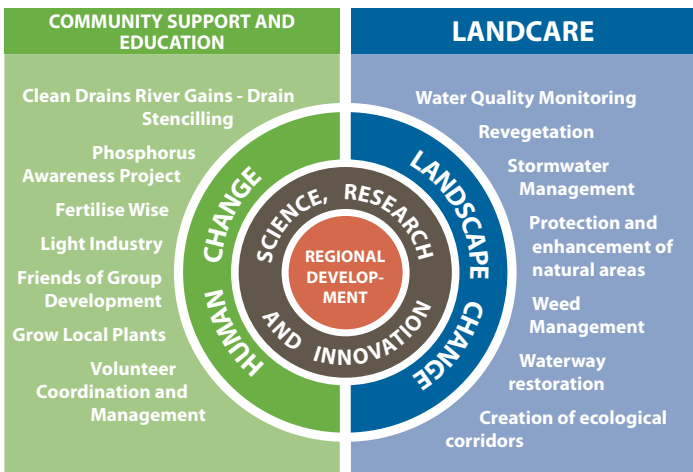
Community is our grass roots and our passion; we are all part of the community we live in, impact on, influence and have the potential to improve.

Partnerships are undertaken with a variety of stakeholders with whom we share a common

vision. Individual partnership projects are undertaken towards specific objectives.

Environmental Services are undertaken on a fee for service basis. The specific intent of this delivery model is to generate income to support our community delivery model. It is recognised that in an ever tightening and diminishing funding environment there is limited external financial support provided to this area. We consider community delivery as an important aspect of both landscape change and human change.

SERCUL NRM PROGRAM AREAS



Education PROGRAMS

PHOSPHORUS AWARENESS PROJECT

Coordinated by Amy Krupa and Deb Taborda

PROJECT OVERVIEW

The Phosphorus Awareness Project is an education campaign that aims to educate the general community about the impact of too many nutrients in the Swan and Canning River systems and wetlands, and how to reduce those levels.

KEY ACHIEVEMENTS

18 displays at the Perth Garden Festival, Community Science Expo and other community festivals, speaking with more than **5700 people**.

277 school presentations to **7160 students** from Kindy to Year 12.

20 school planting sessions by Kindy to Year 12 students.

16 community presentations to **390 people**.

2016 **LGA Annual Nutrient Survey** sent to Local Governments in June. Received 21 responses and report is currently being written.

Supported groups with project resources on 32 occasions.

Hosted the **Canoeing on the Canning workshop** with 12 teachers and community members attending this professional development workshop.

Catchments, Corridors and Coasts – on the organising committee and presented at this three-day course attended by 23 participants.

Fertilise Wise Project – over **3055** of all five brochures distributed at events and to nurseries.

Grow Local Plants Project – over **3905** of all five brochures distributed at events and to nurseries.

Brochure Distribution – over **17 600** Phosphorus Awareness Project resources distributed.

Articles – about the Project in newspapers and newsletters on 12 occasions.

Education Newsletter – four per year distributed to 295 schools and teachers.

ALGAE BUSTER



PHOSPHORUS AWARENESS PROJECT



**3725 PLANTS
INSTALLED**

860 VOLUNTEERS

**660 VOLUNTEER
HOURS**

VALUE = \$22 249



FERTILISE WISE FERTILISER TRAINING

Coordinated by Amy Krupa

PROJECT OVERVIEW

This project aims to train school gardeners, turf managers and Local Government officers in fertiliser best management practices, specific to Perth. The training is organised by SERCUL and delivered by John Forrest, a lecturer in turf management at South Metropolitan TAFE, Murdoch.

KEY ACHIEVEMENTS

- Three training sessions held with 49 turf managers trained from 27 organisations including public and private schools, Local Governments, universities, golf clubs, country clubs and fertiliser contractors.
- Partnership with the Water Corporation to provide this training for school gardeners.

AQUATIC WEED CAPACITY BUILDING AND MANAGEMENT TRAINING

Coordinated by Julie Robert and Dr Judy Fisher

PROJECT OVERVIEW

SERCUL commenced an information gathering process in January 2016 bringing together a group of 31 people from Local Governments, DPaW, WA Herbarium, Water Corporation, Community Landcare organisations, Department of Water, State NRM Office, TAFE's and Environmental Business operators to discuss the best management practice for aquatic weeds in Western Australia. The outcomes were really positive and SERCUL has progressed with this knowledge to run four training sessions. Two sessions were run in the City of Canning, one in Bunbury and one in Busselton.

The training of the organisational decision makers is seen as an essential ingredient to achieving positive on-ground responses for aquatic weed management both in the acute outbreak situation and the management of a more chronic aquatic weed invasion.

SERCUL will now develop the training materials in more detail and package them into a training product ready for use.

Kindly supported by the State NRM Program



Aquatic weeds reference workshop held at the Canning River Eco Education Centre



CLEAN DRAINS RIVER GAINS

One drain stencilling session held in Forest Lakes with 23 drains stencilled by Forest Crescent PS students.

30 VOLUNTEERS

20 VOLUNTEER HOURS

VALUE = \$674

Kindly supported by the Department of Parks and Wildlife Rivers and Estuaries Division and the State NRM Program

Education PROGRAMS

MOZZIE WISE PROGRAM

Coordinated by Dr Rose Weerasinghe and Amy Krupa

PROGRAM OVERVIEW

The Mozzie Wise education program started as a key component of SERCUL's integrated mosquito management approach within the Perth Region. The aim of the program is to educate the local community and school children in the following:

- Mosquito lifecycle, in particular their ecology;
- Mosquito borne diseases;
- Personal protection;
- How to prevent mosquito breeding; and
- How to reduce activities that can lead to the pollution of waterways that can increase mosquito breeding.

An informed public can identify and eliminate potential mosquito breeding habitats around their homes and neighbourhood which will reduce mosquito disease risk.

The purpose of developing the Mozzie Wise school education package is to provide an ongoing, uniform, large-scale education program throughout Western Australia.

KEY ACHIEVEMENTS

- SERCUL launched the Mozzie Wise Program in October 2015.
- 39 school incursions to 1010 students from 11 Primary and High Schools.
- 803 surveys were conducted to evaluate the Mozzie Wise incursions at schools (see graph).
- Mozzie Wise awareness activity stall and 256 surveys were conducted at the 2015 Community Science Expo.
- SERCUL presented a Mozzie Wise community presentation at the River Forum in Bassendean.

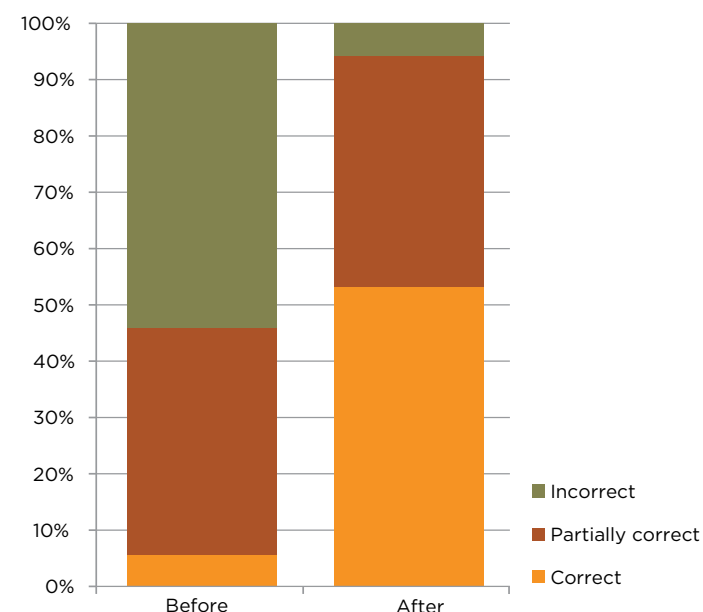


Figure 1: Primary aged children's knowledge of mosquito breeding places before and after Mozzie Wise delivery to schools.

Question asked: List the places where mosquitoes can breed or lay eggs. (Data from age 6 to 11 years old, total 264 children)

Kindly supported by the Department of Health and the Contiguous Local Authority Group-City of Canning

LITTLE GREEN STEPS WA PROGRAM

Coordinated by Kylie Hosking and Megan Mentz and Paula Kalinowski

PROGRAM OVERVIEW

Little Green Steps WA (LGS WA) supports Education for Sustainability (EfS) in the early years sector. This includes childcare centres, family day care, primary schools, preschools, kindergartens and out of school hours care services for children aged 0-8 years.

LGS WA provides professional development workshops, resources, newsletters, ideas and networking opportunities to anyone that would like to improve their understanding of sustainability and link these practices with the Early Years Learning Framework and the National Quality Standard.

LGS WA has partnered with the Cities of Armadale, Canning and Cockburn. Each partnership entails a LGS WA staff member focusing specifically on each local government area for the equivalent of one day a week.

KEY ACHIEVEMENTS

- Publication and distribution of the Reducing Waste Together early childhood resource kit and a new partnership with Waste Wise Schools to conduct waste reduction workshops for early childhood services.
- Two year partnerships with the Cities of Armadale and Cockburn.
- Six month partnership with the City of Canning, recently extended for another year.
- Workshops delivered in Perth and Kalgoorlie.
- Development of a new water-themed workshop.
- Attended two community events; Hello Baby in Cockburn and Harmony Day in Canning.



Cultural Conversations Workshop with Marissa Verma and Sandy Maher for early childhood staff in the City of Cockburn

Kindly supported by the Cities of Armadale, Canning, Cockburn and the Waste Authority



Making nature art at Hello Baby

18 WORKSHOPS

290 PEOPLE WHO ATTENDED WORKSHOPS

635 PEOPLE ON NEWSLETTER MAILING LIST

6 VOLUNTEERS

225 VOLUNTEER HOURS

VALUE = \$7585



VOLUNTEER COORDINATION PROGRAM

Coordinated by Klara Browne

PROGRAM OVERVIEW

In 2015-16, SERCUL continued implementing its volunteer management program, which has resulted in valuable hard work through the volunteer's time and effort. At the same time the volunteers have opportunities to learn, gain experience and give back to the community.

KEY ACHIEVEMENTS

Coordination of casual volunteers who conduct activities for SERCUL and other community groups by volunteering fortnightly at Yule Brook and in the SERCUL office, shed and garden. The casual volunteers also volunteered their time with the Landcare, Research and Education teams.

We would like to thank all the volunteers who have committed themselves to helping us deliver the projects we undertake to improve the health of our waterways and other ecosystems.

REGULAR VOLUNTEERS AND A SPECIAL MENTION TO:

Tina Thorne (146h)
Doug Murphy (240h)
Elizabeth Preller (124h)
Lat Too (650h)
Ryan White (275h)
Errol and Margaret Harwood (25h)
Shannon - Inclusions WA

These volunteers have individually contributed their time to SERCUL over this year. SERCUL would like to thank them for their dedication and continuous support.

Kindly supported by the Department of Parks and Wildlife



48 ACTIVE VOLUNTEERS
including 22 students

COMMUNITY BASED GROUPS -
Inclusions Western Australia, Bentley
Health Unit, CVA, CVA Earth Assist
Program, Mission Providence, atWork
Australia

2291 VOLUNTEER HOURS
VALUE = \$77 230



ADMINISTRATION SERVICES

FINANCIAL ADMINISTRATION SUPPORT TO COMMUNITY GROUPS

*Coordinated by Sandy Wainwright,
Monica Estrada and Jose Alcala*

The SERCUL Financial Administrators continue to provide financial management and/or payroll assistance to the following Community Groups in the SERCUL region:

- Bannister Creek Catchment Group
- Wilson Wetlands Action Group
- Canning River Regional Park Volunteers
- Friends of Queens Park Bushland
- Friends of Paganoni Swamp
- Australian Association for Environmental Education WA Chapter

SUPPORT TO COMMUNITY NRM GROUPS

SERCUL, through Austcover (the provider of the Community Environment Insurance Program), provides a lower cost Public Liability Insurance Policy to nine 'Friends of' SERCUL member groups, to enable them to continue to operate on public land. Each group holds an independent policy coordinated by SERCUL. Some Local Governments refund these costs to SERCUL for which we are very grateful.

SERCUL supports 13 community NRM groups in the region by hosting web pages on the SERCUL website. Community group events and work days are also advertised on the SERCUL website on the Events Calendar, on the SERCUL Facebook page and in SERCUL newsletters.

Community NRM groups including the Friends of Brixton Street Wetlands, Friends of Mary Carroll Wetland, Armadale Gosnells Landcare Group and the Canning River Residents Environment Protection Association also regularly borrow planting and event equipment from SERCUL to support their activities.



*Photos: Top - Shannon from Inclusions WA helping plant at Bannister Creek with Amy Warner,
Right - Friends of South Beach planting at South Beach*

Drainage Nutrient INTERVENTION PROGRAM

*Coordinated by Glen Byleveld
Location - City of Canning and Gosnells*

PROGRAM OVERVIEW

SERCUL assists the Department of Parks and Wildlife Rivers and Estuaries Division with coordinating and delivering monitoring and maintenance activities at Drainage Nutrient Intervention Program sites within the Cities of Canning and Gosnells.

SERCUL's role includes:

- Coordination of project partners including the local government authorities, Water Corporation and Department of Water;
- Vegetation and Water Quality monitoring; and
- Planting and weed control.

Active sites within this period include Wharf Street Wetland, Anvil Way Wetland, Liege Street Wetland and Bickley Basin.

2500 PLANTS INSTALLED
0.5 HA WEED CONTROL
85 VOLUNTEER HOURS
VALUE = \$2865



Photos: Anvil Way basin, Top - removing sediment from the waterway, Middle - before restoration works in 2008, Bottom - after restoration in 2016

Brentwood Main DRAIN PROJECT



KAALITJ NGORT KOONDAAM - DRAGONFLY DREAMING

Coordinated by Glen Byleveld

PROJECT OVERVIEW

The Brentwood Living Stream project aims to improve water quality, natural diversity and the visual amenity of Bateman Reserve in the Bull Creek catchment. The project involves the conversion of a piped main drain into a living stream.

KEY ACHIEVEMENTS

The bulk earthworks were completed in 2015 including channel realignment and construction of three rock riffles. Revegetation and weed control are ongoing with SERCUL maintaining the site until June 2017. An interpretation node was constructed in June 2016.

3000 PLANTS INSTALLED

Kindly supported by the Australian Governments Caring for our Country Program, Department of Parks and Wildlife Rivers and Estuaries Division, Main Roads, Water Corporation and the City of Melville



Photos: Top - Mia Mia built by members of the Yelakjit Moort Association, Middle - before and after construction works, Bottom - after the first planting

Swan-Canning River RECOVERY PROGRAM

The Swan-Canning River Recovery Program projects are a result of proactive local Friends of Groups, highlighting their concerns about the Canning River. In January 2015, Federal Environment Minister Hunt announced the Swan-Canning River Recovery (SCRR) Program, a \$1 million commitment to improve the health of the Swan and Canning Rivers.

HYDROCOTYLE ERADICATION PROGRAM

Coordinated by Matt Grimby

PROGRAM OVERVIEW

The aim of this program is to eradicate *Hydrocotyle ranunculoides* from the Canning River catchment. The Hydrocotyle Working Group, via SERCUL was successful in securing Federal Government funding through Perth NRM in February 2016. To achieve the goal of eradicating Hydrocotyle from the Canning River Catchment, SERCUL is coordinating the efforts of the Hydrocotyle Working Group, which is comprised of all land managers and community groups where Hydrocotyle is present.

The strategy SERCUL is using is to initially map the extent of the infestation. All large infestations over 1 m² were initially treated with herbicide, with one month between

retreatments. Three weeks after herbicide treatment we would map and manually remove small pieces of Hydrocotyle less than 1 m². This has been particularly important as large Hydrocotyle rafts will break up after spraying and easily reinfest other areas.

Hydrocotyle has been an ongoing concern in the Canning Catchment since the early 1990's, costing land managers well in excess of \$1 000 000 to manage. With the coordinated effort of all stakeholders, the project is on track to achieve its goal of eradication from the Canning River catchment by 2020.

Stakeholders include DPaW, Bannister Creek Catchment Group, Canning River Regional Park Volunteers, Christian Brothers, City of Canning, City of South Perth, Water Corporation and Wilson Wetlands Action Group.



Canning River catchment - Hydrocotyle infestation



- Hydrocotyle Monitoring Only - Mills St Main Drain and Collier Pines Drain
- Medium density Hydrocotyle 5.8 ha
- Low Density Hydrocotyle 9.9 ha

DIRECT COMMUNITY ACTION PROGRAM

Coordinated by Dan Friesen

Location - Swan-Canning Catchment

PROGRAM OVERVIEW

This program is being delivered over two years and addresses the restoration needs of several community groups. It aims to increase greater community action in the recovery of the Canning River and its tributaries.

On the Canning River near Kent St, in partnership with Wilson Wetlands Action Group, SERCUL has planted nearly 14 950 native seedlings with ongoing weed management to restore and stabilise the Canning foreshore.

Along the Canning River adjacent to the Mount Henry Peninsula in the City of South Perth, SERCUL is working with Aquinas College and its students to restore a section of the foreshore.

In partnership with Bannister Creek Catchment Group and the City of Canning we revegetated a post fire site of Bannister Creek with 9 774 native seedlings with a further 25 000 planned for 2016-17.

In partnership the City of Canning, we are restoring Lambertia Creek. Approximately 15 000 plants will be installed in 2017.

The Canning River Residents Environment Protection Association have planted 2 860 native seedlings along the Rossmoyne Foreshore.

SERCUL and the Community Groups involved will plant nearly 78 000 native seedlings over the life of the project.

RESTORATION OF BULL CREEK

Restoration of Bull Creek aims to protect and enhance the highly valued remnant vegetation still remaining within the Reserve. This will also re-engage the flood plain allowing the native plants to filter Bull Creek, improving the quality of the water entering the Canning River.

This project has extensively removed blackberry and lantana from a section of Bull Creek, with weed management continuing into 2017.

In partnership with the Friends of Bull Creek Catchment, Rossmoyne Senior High School Bushrangers, City of Melville, Conservation Volunteers Aboriginal Training Program and SERCUL's Work for the Dole, we planted 62 600 native seedlings.

Through the delivery of this project, SERCUL has continued to build and enhance its already strong relationship with the Friends of Bull Creek Catchment, expanding their natural resource management network, expertise and capacity while continuing to engage the surrounding and broader community.

\$309 385 TOTAL FUNDS (OVER 2 YEARS)

6 COMMUNITY GROUPS SUPPORTED

3 LOCAL GOVERNMENTS AREAS

+145 000 PLANTS (OVER 2 YEARS)

3.6 HECTARES REVEGETATED

5.5 HECTARES MANAGED

The program funding, coordinated through Perth NRM, aims to improve the health of the Swan and Canning Rivers by controlling *Hydrocotyle ranunculoides* (Hydrocotyle) and other priority weeds and providing support for direct community action by environmental groups within priority areas.

Kindly funded by the Australian Government National Landcare Program

Canning River PROJECTS

CANNING RIVER REGIONAL PARK POST FIRE RESTORATION

*Coordinated by Daniel Millea
Location – Canning River
Regional Park, Ferndale*

PROJECT OVERVIEW

This project has seen its last year of restoration and continues to see excellent results since the 2011 fire. There has been a strong natural regeneration of native species in certain areas, while other areas have been planted to provide an understory that did not respond to fire. Weed control has been the focus in the project's last year.

*Kindly supported by the Swan Alcoa
Landcare Program*

**200 VOLUNTEER
HOURS**

VALUE = \$6742



Bat in the Canning River Regional Park

MARMOT WAY RESTORATION

*Coordinated by Daniel Millea
Location – Canning River Regional Park,
Marmot Way, Ferndale*

PROJECT OVERVIEW

The aim of this project is to increase the native understory and create an ecological corridor in the Marmot Way restoration site. The site has responded slower to natural regeneration after the 2011 fire. Planting of native plants and weed control has occurred since 2011 with great success.

Planting and weed control will continue for another year to achieve the best results.

Kindly supported by State NRM Program

2000 PLANTS INSTALLED

45 VOLUNTEER HOURS

VALUE = \$1517

CANNING RIVER RESTORATION

*Coordinated by Russell Walczak
Location – Canning River at Kent Street, Wilson and
Nicholson Road, Langford*

PROJECT OVERVIEW

The project continues to see excellent results at the end of its fourth year of management. Weed control has ensured the protection and enhancement of existing remnant vegetation and successful establishment of new revegetation areas. A large effort was undertaken this year to control the feral Brazilian pepper tree infestations which were threatening the native vegetation. The planting and feral tree control was completed by dedicated volunteers, whose efforts in this project are highly valued.

Kindly funded by State NRM Community Grants

8436 PLANTS INSTALLED

12 VOLUNTEERS

277 VOLUNTEER HOURS

VALUE = \$9338

Work for the Dole PROGRAM

WORK FOR THE DOLE – LANDCARE PROGRAM

Coordinated by Klara Browne

PROGRAM OVERVIEW

SERCUL has implemented the Work for the Dole program provided by the Federal Government through the job active provider atWork Australia Division.

The Work for the Dole program aims to assist job seekers to develop the skills employers are looking for, demonstrate they are ready to start work, meet new people, make contacts who can act as a referee and get involved in their local community. SERCUL provides job seekers with a wide range of landcare activities ranging from rubbish collection, hand weeding, woody weed removal, planting, path maintenance and fencing.

This program assists with the grant activities of SERCUL, Armadale Gosnells Landcare Group and other associated community groups, within the local government areas of Armadale, Gosnells, Canning, Fremantle, Cockburn, Melville, Kwinana and Rockingham.

KEY ACHIEVEMENTS

- The establishment and coordination of a highly effective Work for the Dole program that provides support to community delivery and complies with both SERCUL policies and government regulations.
- The program commenced with two projects – SERCUL and AGLG (Jul 2015–Jan 2016), this expanded to four projects – SERCUL, AGLG, Melville/Fremantle and Cockburn/Rockingham (Jan 2016–Jul 2016) and finally to five projects, incorporating a construction team working out of the SERCUL homestead (Jul 2016–Jan 2017).

The programs are very successful and its momentum is not slowing down. We are very proud of both our achievements which are highly praised by our project partners, as well as the observable positive impacts it is leaving on its job-seeker participants.

For more information:
www.employment.gov.au/work-dole



**5 WORKERS PER DAY/
PER PROGRAM
(on average)**

16 977 VOLUNTEER HOURS

VALUE = \$572 295

*Photos: Top – Brushcutting on an AGLG work site,
Bottom – Fence removal for DPaW at Woodman Point*

Beckenham OPEN SPACE

BECKENHAM OPEN SPACE WETLAND LINKAGES RESTORATION PROJECT

Coordinated by Tracy Evans

Located near the picturesque Yule Brook Homestead, the project area covers much of the Canning River, Yule Brook and adjacent wetlands within the boundaries of the Beckenham Open Space.

Previously funded projects have supported restoration works within these areas, including planting of native, endemic plant species.

This project aims to reduce the weed population within these areas, promoting regeneration of native plants, while enhancing the natural connectivity of the area.

Photo point monitoring has commenced throughout the Canning River and Yule Brook and is ongoing. Initial weed control has been undertaken within the site which has included hand weeding by SERCUL volunteers and the Work for the Dole team.

Kindly supported by the State NRM Program

YULEBROOK CONFLUENCE

Coordinated by Tracy Evans

PROJECT OVERVIEW

Located in the Beckenham Open Space, this project aimed to continue previous on-ground works of weed control and revegetation. Thanks to our many volunteers who made this possible through their efforts in planting native plants and hand weeding throughout the site. Our thanks also to SALP for continuing support of this project, which has now concluded.

1973 PLANTS INSTALLED

87 VOLUNTEERS

150 VOLUNTEERS HOURS

VALUE = \$5057

Kindly supported by the Swan Alcoa Landcare Program

YULE BROOK FORESHORE RESTORATION PROJECT

Coordinated by Daniel Millea

Location – Machin Place, Beckenham

PROJECT OVERVIEW

This aim of this project is to restore the vital foreshore of the Yule Brook to provide a healthy understory. Weed control has been the main focus this year with planting of the foreshore to commence in the following year. This will include sedge species such as *Juncus kraussii*, *Juncus pallidus* and *Carex* spp.

Kindly supported by the State NRM Program

20 VOLUNTEERS HOURS

VALUE = \$674



*Photos: Top – Slender Tree Frog in Yule Brook
Bottom – New signs in front of Yule Brook Lagoon*

BOWRA AND O'DEA MEN OF THE TREES MEMORIAL GROVES

Coordinated by John Maliunas

Weed management and site maintenance has been the focus this past year.

Underpruning of all groves has been undertaken by Work for the Dole, CVA and volunteer teams. This has allowed better access for visitors.

The planting season saw Sathya Sai, Santa Maria College and SERCUL volunteers put in over 2500 seedlings.

Thank you to all volunteers who helped install the native plants during this season.

Kindly supported by Bowra & O'Dea, Men of the Trees and the Western Australian Planning Commission

2580 PLANTS INSTALLED

93 VOLUNTEERS

718 VOLUNTEER HOURS

VALUE = \$24 204



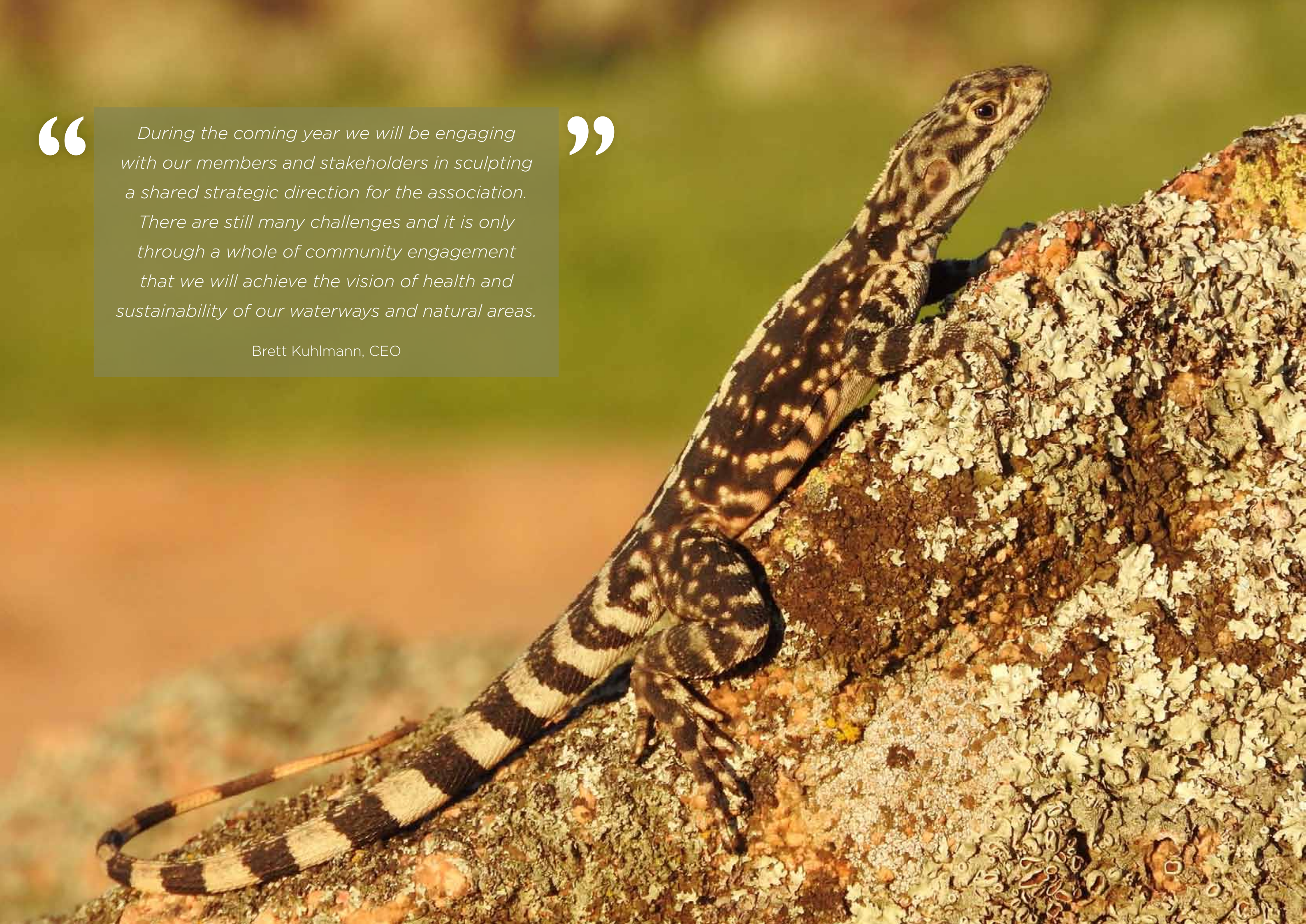
Photos: Top – Memorial Grove 2015 with a beautiful flowering Marri, Bottom – The new 2017 memorial grove

“

During the coming year we will be engaging with our members and stakeholders in sculpting a shared strategic direction for the association. There are still many challenges and it is only through a whole of community engagement that we will achieve the vision of health and sustainability of our waterways and natural areas.

Brett Kuhlmann, CEO

”



Other restoration PROJECTS

TOM BATEMAN WETLAND INLET RESTORATION

*Coordinated by Glen Byleveld
Location – corner of Roe Highway and
Nicholson Road, Thornlie*

PROJECT OVERVIEW

This project is aimed at improving the amenity, habitat value and water treatment capability of the inlet pond within Tom Bateman Wetland.

The inlet pond had accumulated extensive amounts of sediment since the wetland was constructed in 2003. Woody weeds and exotic grasses dominated and significant amounts of polystyrene beads and other gross litter items had accumulated around the edge of the basin.

KEY ACHIEVEMENTS

The inlet basin was revegetated following extensive earthworks. SERCUL maintenance and weed control is ongoing until hand over to the City of Gosnells in July 2016.

6500 PLANTS INSTALLED

*Kindly supported by the Australian Government's Caring
for our Country Program and the Department of
Parks and Wildlife*



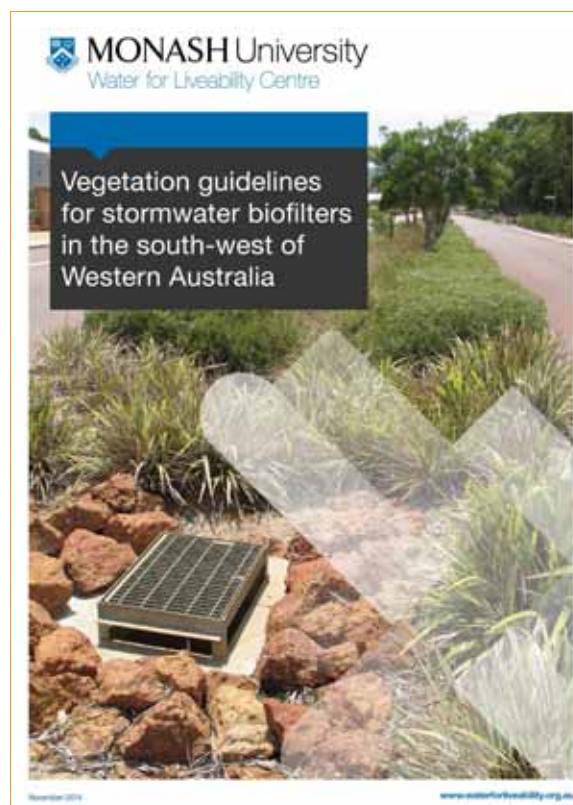
*Photo: Top – Before restoration works,
Bottom – After planting*

VEGETATION GUIDELINES FOR STORMWATER BIOFILTERS IN THE SOUTH-WEST OF WESTERN AUSTRALIA

By Glen Byleveld

In 2014, the Department of Water engaged SERCUL to help co-author 'Vegetation Guidelines for Stormwater Biofilters in the South West of Western Australia'. SERCUL contributed sections 5, 6 and 8 of the guidelines which were published by Monash University in November 2014. The Department of Water also engaged SERCUL to facilitate two subsequent training events in response to the guidelines which attracted over 150 participants.

A copy of the guidelines can be downloaded from http://sercul.org.au/docs/381_Biofilter_vegetation_guidelines_for_southwestWA.pdf



BROLGA LAKE

*Coordinated by Dan Friesen
Location – Brolga Lake, Willetton*

PROJECT OVERVIEW

Brolga Lake is a small seasonal wetland that feeds into Bull Creek. SERCUL has partnered with the City of Canning to revegetate and restore Brolga Lake and establish a community group to assist in improving and maintaining its natural values. By improving vegetation at Brolga Lake we are aiming to increase natural habitat and improve water quality.

*Kindly supported by the Swan Alcoa Landcare
Program and the City of Canning*

1837 PLANTS INSTALLED

262.5 VOLUNTEERS HOURS

VALUE = \$8849





Bannister Creek CATCHMENT GROUP

BANNISTER CREEK FINAL STAGE PROJECT

PROJECT OVERVIEW

The Bannister Creek Final Stage project was initiated in 2014 as a partner project with the Bannister Creek Catchment Group (BCCG) and the City of Canning. This site is the final section of Bannister Creek to be converted to a Living Stream.

KEY ACHIEVEMENTS

Prior to works being undertaken, the bank on the western side of the creek had been badly affected by flash flooding causing bank collapse that resulted in a 1:1 vertical slope and exposed a local drainage pipe. It was estimated that approximately 1m of bank was lost over the 2015 winter period, leaving only 17 m to the nearest residential fence line. Furthermore, the historical placement of sediment on the banks edge had built up the height of the creek bank preventing the connection of the waterway to the floodplain.

The main benefits of floodplains are flood mitigation, improving water quality by filtering sediments and nutrients, slowing water flow to enable water recharge and the provision of diverse habitats. Floodplains are known to be some of the most ecologically diverse habitats on the planet.

Following earthworks in the early part of 2016, the City of Canning engineering team, BCCG and SERCUL installed a riffle upstream of Acacia Bridge. The 2016 winter season will be the first year of plant installation.

The BCCG would like to thank all the project partners being the City of Canning, the Department of Water, the State NRM program, SERCUL and the Water Corporation.

The BCCG would like to give a special thanks to the City of Canning's Engineering team and the Parks and Conservation team for their expert advice, support and willingness to undertake these projects.



Photos: Top and bottom left – Corpus Christi students Planting at Ferndale site, Bottom right – National Tree Day 2015 at UWR site



Coordinated by Amy Warner

BANNISTER CREEK UWR MAINTENANCE PROJECT

PROJECT OVERVIEW

The aim of this project is to undertake weed control and infill planting following the Bannister Creek Urban Waterways Renewal project undertaken in 2011–2013.

KEY ACHIEVEMENTS

Typha, morning glory, blackberry and *Eclipta prostrata* control, as well as infill planting have been the main focus of this project. *Typha orientalis* stands had increased prolifically since the construction phase, requiring intense treatment. *Eclipta prostrata* dominated the floodplain downstream of Metcalfe Rd, but has responded well to treatment allowing native sedges to flourish.

The BCCG held its 2015 National Tree Day event at this site with over 40 volunteers attending to install 1000 plants.

**3123 PLANTS
INSTALLED**

159 VOLUNTEERS

**255.5 VOLUNTEER
HOURS**

VALUE = \$8613

BANNISTER CREEK, FERNDALE

PROJECT OVERVIEW

The BCCG have been working in the Ferndale section of Bannister Creek for over five years to control many threatening weeds such as Chilean Willow, Blackberry, *Cyperus gigantus*, *Cyperus papyrus*, *Paspallum* and *Hydrocotyle* with positive results. *Paspallum* and *Hydrocotyle* have been the main focus over the last two years.

KEY ACHIEVEMENTS

This is a SALP funded project which has been complemented by funding through the Swan Canning River recovery project to specifically address *Hydrocotyle*. Control of dense thickets of other weeds is required to improve access to the *Hydrocotyle* patches.

This section of Bannister Creek had 5–6 spot fires over the 2014–15 summer period. The fires provided good areas for restoration, mainly the installation of native sedges.

Nearly 10 000 sedges were installed in May–June 2016 with assistance from volunteers from Corpus Christi and the Leeming Bushrangers. Another 20 000 plants will be installed over the next financial year.

9774 PLANTS INSTALLED

136 VOLUNTEERS

486 VOLUNTEER HOURS

VALUE = \$16 383

VELLGROVE ECOLOGICAL CORRIDOR PROJECT OVERVIEW

The Vellgrove Ecological Corridor project site is located in Parkwood and bordered by Vellgrove Ave and Roe Highway. The site is in its ninth year of restoration and great success in establishing vegetation has been achieved.

KEY ACHIEVEMENTS

Nutgrass removal has been a strong focus on this site over the past year. We have found that manual removal of nutgrass has been very effective. Cutting the grass below ground level whilst leaving the roots in to minimise disturbance has resulted in a significant reduction of this very persistent weed. This technique has been found to be more effective than chemical control. Although the technique is labour intensive for the first two years, the results are well worth while.

Volunteers from Mel Maria Primary School, the Wood Group, Yule Brook College, CVA and SERCUL installed 3620 plants over the 2015 winter period. Planting has been concentrated on an area where nearly 40 feral casuarinas were removed in 2013.

3620 PLANTS INSTALLED

37 VOLUNTEERS

176.5 VOLUNTEER HOURS

VALUE = \$5950



BCCG is kindly supported by the City of Canning, State NRM Program, Water Corporation, 25th Anniversary Landcare Program and the Swan-Canning River Recovery Program



Friends of Bull Creek CATCHMENT GROUP

FRIENDS OF BULL CREEK CATCHMENT

Coordinated by Dan Friesen

Location – Bull Creek Catchment, City of Melville

PROJECT OVERVIEW

This project aims to protect and enhance the biodiversity of Bull Creek while addressing and improving water quality. SERCUL works directly with the Friends of Bull Creek Catchment, Rossmoyne Senior High School Bush Rangers and the City of Melville.

KEY ACHIEVEMENTS

- The Friends of Group continues to attract new members and meets twice a month, providing on-going weed management and planting labour.
- A collaborative arrangement between DPaW, City of Melville and SERCUL has been established.
- New partnership with CVA Aboriginal Conservation Training Program established.
- Continued engagement from the Rossmoyne Senior High School Bush Rangers who undertake planting, weed management and water quality monitoring.
- Blackberry has been nearly eradicated across a total of 6 ha.
- Continued weed control management across nearly 6 ha.
- Extremely good success rate on all revegetation efforts.
- Attracted and delivered over \$257 000 worth of grant funding.
- Applied for an additional \$77 000 in grant funding for 2016-17.

Kindly supported by the SALP, State NRM Program, 25th Anniversary Landcare Grants, the Swan-Canning River Recovery Program coordinated through Perth Region NRM, City of Melville and DPaW

84 496 PLANTS INSTALLED
2599 VOLUNTEER HOURS
VALUE = \$87 612



Photos: Top – Rossmoyne SHS Bush Rangers planting, Middle/Bottom – Planting event with FO Bull Creek Catchment Group



Friends of Booragoon and BLUE GUM LAKES

FRIENDS OF BOORAGOON AND BLUE GUM LAKES

Coordinated by Dan Friesen

Location – Booragoon and Blue Gum Lakes, City of Melville



BOORAGOON LAKE

PROJECT OVERVIEW

SERCUL is working directly with the Friends of Booragoon and Blue Gum Lakes to undertake restoration works to protect and enhance Booragoon Lakes' biodiversity.

The Friends of Group are managing weeds and planting native species along a section of the lake with support from SERCUL. SERCUL is managing the Japanese peppers and weed control in partnership with the City of Melville's wetland crew.

KEY ACHIEVEMENTS

- Successfully attracted continued funding support from State NRM.
- Successfully attracted \$31 600 from Perth NRM and the Living Wetlands Program to eradicate Japanese Peppers over three years.
- Initial treatment of Japanese Peppers across the site has been undertaken.
- Increased engagement and coordination from the City of Melville.
- Hosted two community planting events.
- Continued engagement with the Winthrop Bateman Scouts.



Blue Gum Lake revegetation

BLUE GUM LAKE

PROJECT OVERVIEW

This project aims to remove couch and other weeds that currently dominate the lakes vegetation and replace them with species native to the lake that will improve habitat and water quality.

KEY ACHIEVEMENTS

- Successfully attracted continued funding support from SALP.
- Successfully attracted funding from State NRM.
- Increased engagement from the City of Melville.
- High success rate with wetland revegetation.
- Continued expansion of weed control area.
- Continued engagement from the Murdoch TAFE students undertaking environmental monitoring.

**22 500 PLANTS
INSTALLED**
878.5 VOLUNTEER HOURS
VALUE = \$29 614

Kindly supported by the State NRM Program, the Living Wetlands Program coordinated through Perth Region NRM, City of Melville and DPaW Rivers and Estuaries Division

Armadaale Gosnells LANDCARE GROUP



ARMADALE GOSNELLS LANDCARE GROUP

Coordinated by:

Jen Francis – Community Landcare Coordinator

Shane Hunter – Community Landcare Officer

Armadaale Gosnells Landcare Group (AGLG) cares for the Upper Canning, Southern and Wungong Rivers and their tributaries. In the 2015-16 financial year, AGLG undertook restoration works at 24 sites, both bushland and riverland, within the City of Gosnells and the City of Armadale. This included extending previous river foreshore restoration works along the Canning River, with a vision of linking sites and creating a continuous habitat corridor.

In 2015-16, AGLG was fortunate to continue work with some very dedicated Friends of Groups and passionate members of the community. A total of 69 community work days were held, mostly during the winter and spring months with our major plantings events being National Tree Day and Bushcare's Major Day Out. AGLG also invite school groups and other community groups to participate in tree

planting activities and during the 2015-16 financial year AGLG were joined by 21 different schools, including some outside of the catchment. AGLG also hosted or were present at six community workshops and events, including a weed information workshop, the Kelmscott Show, the Spring into Armadale Festival, NAIDOC day celebrations and Little Scribblers Harmony Week celebrations.

The 2015 winter/spring planting season saw a record number of seedlings planted for AGLG – a massive 114 500! We were also pleased to have assistance two days a week from a Work for the Dole team which brought much needed extra hands along to our sites.

The 2015-16 financial year also saw AGLG establish a very successful Facebook page to increase community awareness and participation in our landcare activities.

KEY ACHIEVEMENTS

A key achievement for AGLG in the past year was the completion of several restoration projects under the Australian Government's National Landcare Program. The first was a project under the 20 Million Tree section of the National Landcare Program. This project saw 17 500 seedlings planted across three sites in the City of Gosnells: John Okey Davis Park, Mary Carroll Park and Astley Street Reserve. Great preparation and planting works has seen many of these seedlings reach heights greater than 1.5 m in just one growing season.

The other projects were under the 25th Anniversary Grants of the National Landcare Program. One of these focused on restoring billabongs along the Canning River north of Orlando Street Bridge, Kelmscott. This project complemented other restoration works carried out along the riverbank by AGLG in partnership with the Department of Parks and Wildlife. This billabong project has seen restoration works at the site completed, allowing the site to be handed back to the local government and for AGLG to move to a new area to begin restoration works.

24 SITES

**114 494 PLANTS
INSTALLED**

**69 COMMUNITY
WORK DAYS**

21 SCHOOLS ENGAGED

**6 COMMUNITY
WORKSHOP/EVENTS**

2840 VOLUNTEERS

**7534 VOLUNTEER
HOURS**

VALUE = \$253 971



Photos: Top – Kelmscott Billabong, Bottom left – National Tree Day at Astley Street Reserve 2015 Children's Activities, Bottom right – National Tree Day at Astley Street Reserve 2015 planting



AGLG is kindly supported by the City of Armadale, City of Gosnells, Australian Government's National Landcare Program, Department of Parks and Wildlife, Alcoa, Western Australian Government's State NRM Program, Perth NRM and Cedar Woods Properties Limited



Environmental SERVICES

SERCUL ENVIRONMENTAL SERVICES PROGRAM

Environmental Services are undertaken on a fee-for-service basis. The specific intent for this delivery program is to generate income to support our community delivery model.

It is recognised that in an ever-tightening and diminishing funding environment there is limited external financial support provided to this area. We consider community delivery as an important aspect of both landscape change and human change.

SERCUL's Environmental Services Unit has continued to grow over the past year. We continue to offer a range of services including chemical and manual weed control, planting and revegetation, fencing, weed and vegetation mapping and erosion control.

Over the past year SERCUL has conducted work for 16 clients in State and Local Government, the private sector and local Friends of Groups.

Achievements have included weed control covering more than 215 hectares over 80 sites. Most of this work has focussed on specialist chemical and manual weed removal in environmentally sensitive areas including wetlands, bushland and revegetation areas.



WIRELESS HILL PARK

Client: Friends of Wireless Hill Park
Coordinated by Tracy Evans

PROJECT OVERVIEW

This project commenced in 2009 with the Friends of Wireless Hill Park contracting SERCUL to undertake manual weed management in the Wireless Hill Park area. Work has involved the management of perennial veldt grass (*Ehrharta calycina*) and other seasonal weeds such as *Gladiolus caryophyllaceus* in the sensitive wildflower walk areas where chemical weed control is not viable.

With the Friends group successful in securing ongoing funding, weed management has been able to continue and excellent results over the past seven years have been achieved.

This year hand weeding has been focused on the area next to the Melville Council and the paths of the wildflower walk area, opposite the main carpark in the heart of the reserve.



Bobtail at Wireless Hill

LAKE COOGEE RESTORATION

Client: Landcorp
Location - Lake Coogee, City of Cockburn

This year saw us successfully complete the revegetation of four hectares of completely degraded land on the southern edge of Lake Coogee for Landcorp. Handover of this project to the City of Cockburn occurred as scheduled in December 2015.

This project began with weed control in 2013 followed by planting in 2014 and infill planting and maintenance of weeds to ensure successful completion in 2015.



Photos: Above - Lake Coogee after first plant installation.
Below are aerial photos of Lake Coogee before and after restoration.
Top - prior to initial weed control in June 2012. The site is completely degraded with only weeds present.
Bottom - Lake Coogee following successful completion of project in June 2016. Cover of native vegetation is now well over 80%.

Water Quality MONITORING PROGRAM

WATER QUALITY PARTNERSHIP PROJECT

Coordinated by Alice Atkinson and Ditte Eden

PROJECT OVERVIEW

This project has been supported by the Local Government Authorities (LGAs) who's boundaries incorporate the catchment and drainage of interest, the Department of Water (DoW), Whiteman Park (Department of Planning) and the Department of Parks and Wildlife Rivers and Estuaries Division (DPaW RED).

The project provides a standardised approach to water quality monitoring (WQM) across the Perth Region in catchments of significance. SERCUL's main role, in conjunction with the Aquatic Sciences Branch of the DoW is to: assist stakeholders in assessing their water quality data requirements; prepare a sampling and analysis plan (SAP) for each catchment; undertake the actual sampling; collate and analyse the data and produce an annual report highlighting the findings and recommendations.

KEY ACHIEVEMENTS

- Five water quality monitoring programs implemented: Bennett Brook catchment, City of Melville Bull Creek catchment and lakes, Bull Creek East catchment, Bannister Creek catchment and City of South Perth catchments. The annual reports for South Perth, Bennett Brook, City of Melville Bull Creek and Bull Creek East catchments were completed in July and the remaining catchment (Bannister Creek) is still under preparation.
- Eight partnerships ongoing with City of Bayswater, City of Melville, City of Swan, City of South Perth, City of Canning, Whiteman Park, DoW and DPaW RED.
- The data is used to inform the DPaW RED local Water Quality Improvement Plans (WQIPs) and for the expansion of the DoW's State Water Information Resource (WIR) database.
- SERCUL has provided assistance to the DoW in the monthly water sampling and quarterly sediment and macrophyte sampling for the Drainage Nutrient Intervention Project (DNIP).
- Six budgets were prepared and accepted by the stakeholders for the continuance of the all five current water quality programs in the 2016-17 monitoring period. SAPs and safety plans have been prepared and registered with the Department of Water.

8 CATCHMENTS
40 SAMPLING EVENTS
104 SAMPLE SITES
416 WATER SAMPLES COLLECTED
45 SEDIMENT SAMPLES COLLECTED
48 MACROPHYTE SAMPLES COLLECTED
VALUE = \$236 000



Kindly supported by the Cities of South Perth, Bayswater, Swan, Melville and Canning; Whiteman Park (Department of Planning); Department of Parks and Wildlife Rivers and Estuaries Division (DPaW RED) and Department of Water (DoW)

WATER QUALITY ENVIRONMENTAL SERVICE

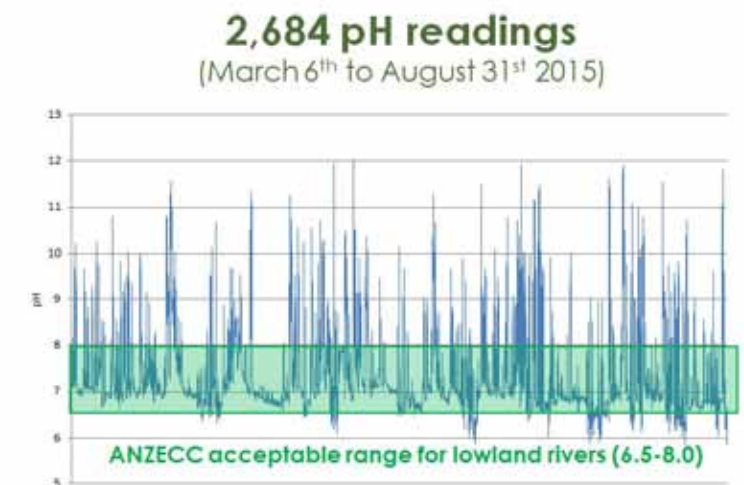
Coordinated by Alice Atkinson and Ditte Eden

WHALEBACK LAKE MONITORING PROGRAM

After several surfactant pollution events in the Bannister Creek catchment at the Whaleback Golf Course Lake, further investigation was recommended.

Collection of water samples for the analysis of surfactants proved to be extremely costly. By recommendation from the Department of Environment and Regulation, (DER) a passive sampler (TPS 90FLMV) which collects time series physical data was installed at Whaleback Lake inlet in March 2015 to monitor pH fluctuations in an effort to gather more information about pollution events.

The City of Canning provided \$10 000 towards the equipment and monitoring costs of this program. SERCUL conducted monthly site visits to retrieve data and maintain equipment which concluded in March 2016. The time-series data was collated every month and a six monthly report was completed and presented at the SERCUL AGM in October 2015. A final report for the City of Canning and DER is currently under preparation.



CYGNIA COVE MONITORING PROGRAM

The City of South Perth contracted SERCUL in 2015 to conduct water quality monitoring in the constructed and retained wetlands within the newly developed Cygnia Cove Estate to determine whether the water quality in the wetlands is being impacted by the surrounding urban development.

Four seasonal sampling events were conducted in the 2015-16 monitoring period. A final report is currently under preparation. The monitoring program has continued into the 2016-17 monitoring period.

PIESSE LAKE MONITORING PROGRAM

The Shire of Katanning contracted SERCUL to develop a Master Plan for the reconstruction and maintenance of Piesse Lake in Katanning. As part of this project, water quality monitoring was conducted to assess the water within Piesse Lake and the surrounding area as supporting evidence for management recommendations.

SERCUL prepared a sampling and analysis plan and carried out the sampling in March 2016. A final report was prepared and presented to the Shire of Katanning and utilised in the final Master Plan for Piesse Lake.

3 CATCHMENTS
18 SAMPLING EVENTS
15 SAMPLE SITES
26 WATER SAMPLES COLLECTED
14 MICROBIAL SAMPLES COLLECTED
VALUE = \$44 782

Kindly supported by the City of South Perth, City of Canning and Shire of Katanning

Research PROGRAM

MANAGING MOSQUITOES WITH RESTORATION

Coordinated by Dr Rose Weerasinghe, Glen Byleveld and Brett Kuhlmann

PROGRAM OVERVIEW

This program aims to develop an Integrated Mosquito Management approach within the Perth Region.

Stormwater treatment systems such as constructed wetlands and swales are common in Perth and typically designed to improve water quality, natural diversity and aesthetics. However, if these systems are not properly designed and adequately managed there is potential for localised reduction in water quality creating midge, mosquito and algal bloom problems.

Long term management of mosquitoes in these systems should include a combination of cultural, biological and physical control methods with chemical controls used only when necessary to provide short term treatment.

KEY ACHIEVEMENTS

- Lotterywest funding received for SERCUL to conduct a pilot research study titled, 'Habitat rehabilitation and salt marsh mosquito management in the Canning River Regional Park (CRRP) tidal flats'. The purpose of this project is to reduce mosquito breeding and improve salt marsh habitat within the tidal flats of the CRRP. The study will provide a field based trial of Integrated Mosquito management techniques in sensitive environments.

- This research will be conducted in conjunction with Curtin University and the City of Canning.
- Biomonitoring continued in 2015 to understand mosquitoes and their predators and competitors' composition in temporary wetlands. Yule Brook wetland monitoring has been completed (Figure 1). Horley Road Wetland monitoring has commenced.
- Mosquito risk assessment at Piesse Lake and surrounding environment in the Shire of Katanning. The larval mosquito productivity and species composition were analysed and reported to inform the Piesse Lake Master Plan.
- SERCUL presented mosquito and restoration information at:
 - Wetland Conference WA;
 - River Park Management Committee, Bassendean;
 - East Swan River (ESR) Contiguous Local Authority Group (CLAG);
 - River Forum, Bassendean; and
 - Annual CLAG, WA Forum.

SERCUL would like to thank its volunteer students Maria Martins, Billy Mogojwa, Emmanuel Inegbeniki (Murdoch TAFE), Elizabeth Preller (University of Western Australia) for their continued support.

Kindly supported by Lotterywest and NRM Community Action Grants

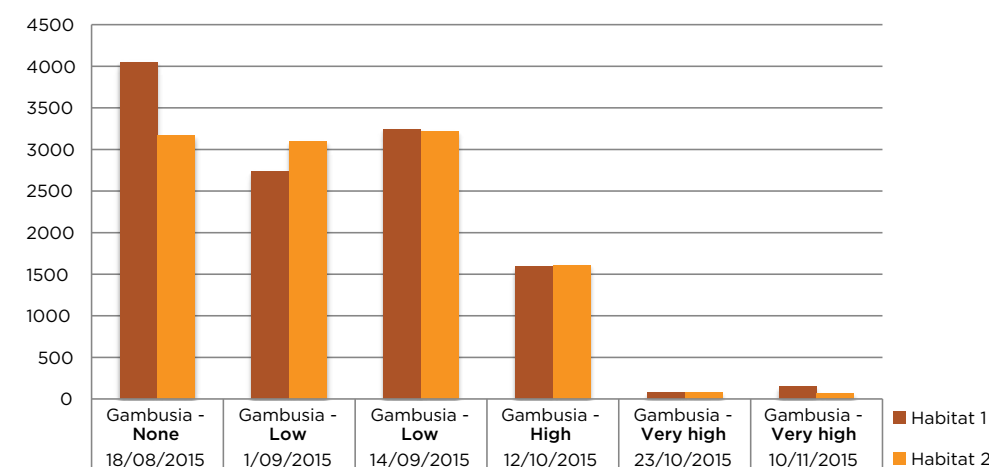


Figure 1 - Total macroinvertebrate abundance in relation to *Gambusia holbrooki* (Mosquito fish) recorded at Yule Brook Wetland, 2015.

EVALUATING RESTORATION SUCCESS

Coordinated by Dr Rose Weerasinghe, Glen Byleveld and Brett Kuhlmann

PROJECT OVERVIEW

This project aims to develop a systematic monitoring program for SERCUL's restoration sites.

SERCUL, together with our project partners and stakeholders, is continuing restoration and management work in the catchments and along the tributaries and banks of the Swan-Canning River system. To determine if our efforts are achieving the desired goals, there is a need to assess the efficacy of the restoration efforts.

The monitoring programs include vegetation, macroinvertebrate and water quality surveys and analysis.



Monitoring at Bannister Creek

Brentwood

- Two monitoring points were located at the newly constructed living stream for long term ecological evaluation. Macroinvertebrate and water quality assessment was conducted prior to the revegetation.
- Aquatic and foreshore vegetation was assessed. Monitoring will be continued to better understand improvements of the Brentwood main drain.

Bull Creek

- 17 sampling quadrats (1x1 m) were established in the section of the weed management area prior to the removal of blackberry, lantana and other weeds. Species composition, abundance and percentage cover was recorded as baseline vegetation information. Monitoring will be continued to measure the post weed control and revegetation success.
- A macroinvertebrate survey and water quality study for locations along Bull Creek was conducted and analysed. Investigation will continue to better understand restoration efforts on the ecological condition of the stream.

Bannister Creek

- Two sampling locations were located at the Bannister Creek living stream prior to construction work for the final stage project. Water quality monitoring and macroinvertebrate sampling and identification were completed before the construction.
- Vegetation composition was recorded at both sampling sites. Post-construction and revegetation monitoring success will be continued.

Auditor's REPORT

W F DAWSON & ASSOCIATES Chartered Accountants



INDEPENDENT AUDITOR'S REPORT TO THE MEMBERS OF SOUTH EAST REGIONAL CENTRE FOR URBAN LAND CARE INC (SERCUL)

Scope

I have audited the financial statements of **SERCUL** which has been classified as a non general purpose account, for the year ended 30th June 2016.

The Association's committee is responsible for the preparation and presentation of the financial statements. The information the statements contain and the accounting policies used are determined by the committee so as to meet the needs of the members. I have conducted an independent audit of these accounts in order to express an opinion on them to the members.

I disclaim any assumption of responsibility, for any reliance on this report or these accounts, to any person other than the members, or for any purpose other than for which they were prepared.

My audit has been conducted in accordance with Australian Auditing Standards to provide reasonable assurance as to whether these accounts are free of material misstatements. My audit procedures include an examination, on a test basis, of evidence supporting the amounts shown in these accounts. These tests have been undertaken to form an opinion as to whether, in all material respects, these accounts are fairly presented.

My audit opinion expressed in this report has been formed on this basis.

Audit Opinion

In my opinion, the financial statements present fairly the operating results of **SERCUL** for the 2015/2016 financial year and its financial position at 30th June 2016.

Signature of Auditor:
Name of Auditor:

WARREN FRANCIS DAWSON
W F DAWSON AND ASSOCIATES
PO BOX 2063
CHURCHLANDS WA 6018

30 August 2016

Principal: Warren F Dawson ACA AGIS
Level 3, Suite 17 30 Hasler Road, OSBORNE PARK WA 6017
Correspondence - PO Box 2063, Churchlands WA 6018
Telephone: (08) 9244 5560 Facsimile: (08) 9244 5516 Mobile: 0411 809 748
A.B.N.: 30 802 594 173
Email: warrendawson@gmail.com
(Liability limited by a Scheme approved under Professional Standards Legislation)

Cash Flow SUMMARY

THIRTEEN YEAR PROGRESSION OF ACTUAL CASH FLOW 2003-2016

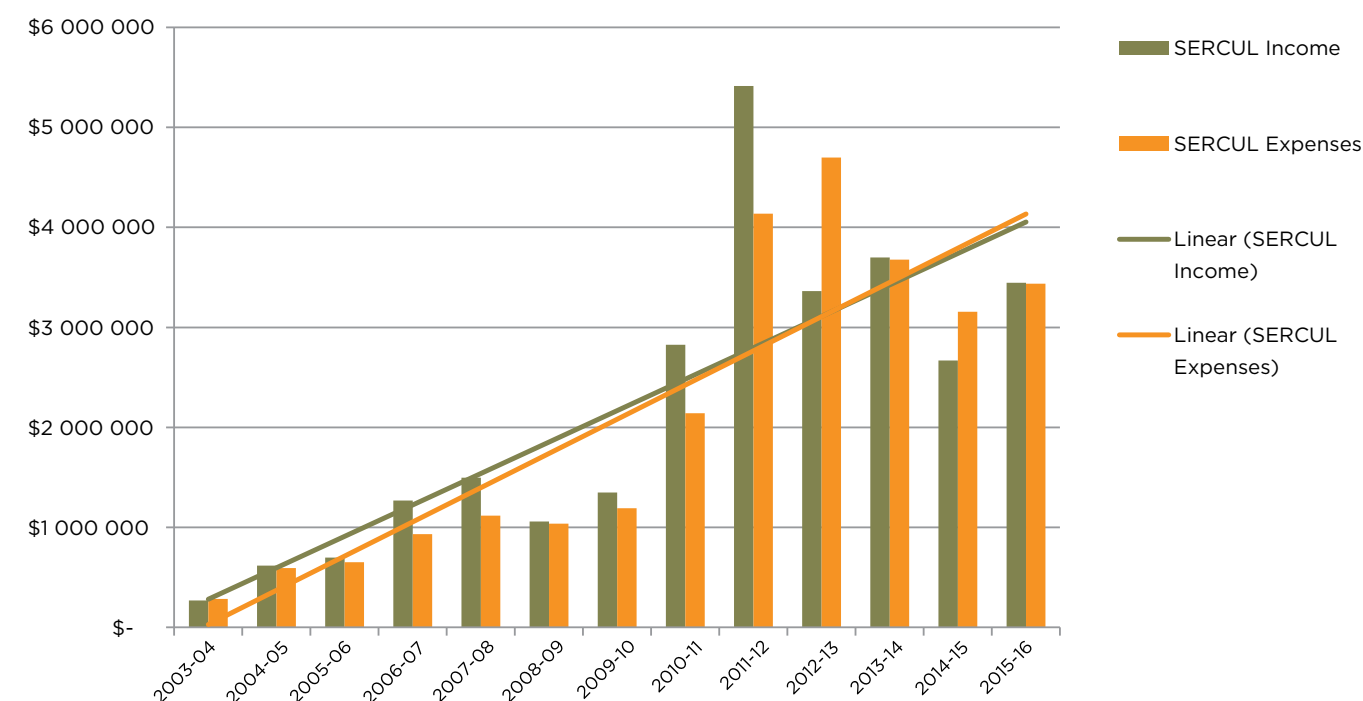
In analysing SERCUL's income for the 2015-16 financial year, we have undertaken an assessment based on the three levels of our delivery model; Community (grants), Partnerships and Environmental Services. This analysis shows that 57.9% of income was derived through partnership projects undertaken with stakeholders to achieve specific objectives. Environmental Services provided 30.2% of the annual income with grants based delivery accounting for the remaining 11.9%. The cash flow at the end of the financial year showed an unexpected increment of 29% (from \$2 668 894 in 2014-15 to \$3 446 774 in 2015-16).

The Swan-Canning Recovery Program projects, Brentwood Living Stream project and the new water quality program partnerships with the Cities of Canning and South Perth have contributed to the increased partnership delivery. This delivery combined with a greater than expected delivery of Environmental Services provided the incremental rise in cash flow for the financial year. The breakdown of income in this fashion illustrates the importance of a partnership approach for SERCUL. This approach has been critical to achieving positive on-ground outcomes and it comprises the core of our delivery model.

Environmental Services is also a key component of our delivery model. The funds generated from this area enable the Association to support the Community grants delivery.

There was an incremental rise for the annual expenditure of 9% (from \$3 154 813 in 2014-15 to \$3 435 188 in 2015-16). This increase in expenses was primarily due to the implementation of the larger partnership projects such as the Swan-Canning River Recovery Projects, Brentwood Living Stream and the new water quality projects. The increment on expenditure for SERCUL was also a result of SERCUL paying in advance for expenses incurred in the delivery of some environmental services, prior to receiving payment.

It is also important to highlight that at the end of the 2015-16 financial year SERCUL was close to break even, when comparing the cash flow for the income against the expenses. This is a very good result for the Association, given the level of financial uncertainty during the year and the ongoing commitment to community support and on-ground delivery. The Association has been able to maintain stability and continue building a more sustainable landcare business model.



Financial REPORT

8:10 AM

23/08/16

Accrual Basis

South East Regional Centre for Urban Landcare Balance Sheet As of June 30, 2016

	Jun 30, 16
ASSETS	
Current Assets	
Chequing/Savings	
Bendigo Term Inv. 136641388	624,205
Bendigo working a/c 136248010	19,649
BendigoTerm Inv. 141340877	748,395
Petty Cash	185
Petty cash - PAP	19
Public Env.Fund 147844088	225
Social Inv Acct 155528896	432,375
Total Chequing/Savings	1,825,053
Accounts Receivable	
Accounts Receivable	127,234
Total Accounts Receivable	127,234
Other Current Assets	
Prepaid Project Expenses	36,538
Total Other Current Assets	36,538
Total Current Assets	1,988,824
Fixed Assets	
Computer Equipment	
Prov.for depn Computer equip.	-99,264
Computer Equipment - Other	101,099
Total Computer Equipment	1,835
Motor Vehicle at cost	
Prov. for depn Motor Vehicle	-149,083
Motor Vehicle at cost - Other	158,121
Total Motor Vehicle at cost	9,038
Office Equipment	
Prov for depn Office Equipment	-68,414
Office Equipment - Other	71,615
Total Office Equipment	3,201
Plant & Equipment	
Prov for depn Plant & Equipment	-130,174
Plant & Equipment - Other	160,573
Total Plant & Equipment	30,399
Total Fixed Assets	44,473
TOTAL ASSETS	2,033,297
LIABILITIES	
Current Liabilities	
Other Current Liabilities	
Grants/Services in advance	874,142 *
Payroll Liabilities	
Superannuation Liability	
ANZ Superadvantage	1,474
Australian Catholic Super & Ret	529
Australian Ethical Retail Super	6,968
AustralianSuper	5,278
BT Superannuation	2,050
CBUS	1,347
Colonial First State	1,194
Essential Super	958
Future Super	1,579
Host Plus	4,070
Rest Super	1,058
Tower	1,893
UniSuper	2,570
WALGSP	3,511
Total Superannuation Liability	34,479
Payroll Liabilities - Other	31,405
Total Payroll Liabilities	65,884

8:10 AM

23/08/16

Accrual Basis

South East Regional Centre for Urban Landcare Balance Sheet As of June 30, 2016

	Jun 30, 16
Provision for LSL and AL	102,291
Tax Payable	71,976
Total Other Current Liabilities	1,114,293
Total Current Liabilities	1,114,293
TOTAL LIABILITIES	1,114,293
NET ASSETS	919,004
EQUITY	
Retained Earnings	1,334,229
Net Income	-415,224
TOTAL EQUITY	919,004

***Note:** Funds committed for the delivery of projects in 2016-17, received in advance from grants or partnerships


Financial REPORT

Statement by the MANAGEMENT COMMITTEE

8:21 AM
23/08/16
Accrual Basis

South East Regional Centre for Urban Landcare Profit & Loss July 2015 through June 2016

	Jul '15 - Jun 16
Ordinary Income/Expense	
Income	
ADMINISTRATION	200,288
Bank Interest-Public Env. Fund	1
Community Driven Restoration	-48,589
Educational Operations	13,991
Employment.	1,964,545
Environmental Project Operating	66,145
Planning & Construction	21,090
PROJECT MANAGEMENT	37,735
SCRRP-Hydrocotyle Part B	-17,346
SCRRP-Hydrocotyle Part C	44,898
SCRRP Bull Creek	50,130
SRT- Brentwood Living Stream.	252,932
SRT-Tom Bateman Res.	9,665
Vehicle & Landcare Maintenance	282,551
Water Corp. UWR	14,394
Water Quality Partnership	121,770
Total Income	3,014,200
Gross Profit	3,014,200
Expense	
Admin out	250
ADMINISTRATION.	179,461
Approvals/Construction/Consulta	790
CoC Landcare.	11,412
Community Driven Restoration.	29,216
Depreciation Expense	34,592
Educational Operations.	35,704
EMPLOYMENT-	1,945,885
Environmental ProjectOperating.	85,125
Healthy Rivers 15 -16	24,250
Leave entitlement provision	-42,880
Mill St Drain-Hydrocotyl	2,250
Planning & Construction.	15,081
PROJECT MANAGEMENT.	26,595
Reimburse of Funds/Grants	14,970
SCRRP-Hydrocotyle-Part C	115,898
SCRRP-Hydrocotyle Part B.	121,734
SCRRP Bull Creek.	127,017
SRT Brentwood Living Stream	303,111
SRT Tom Bateman Res.	9,665
Vehicle & Landcare Maintenance.	261,194
Water Corp UWR	14,394
Water Quality Partnership.	119,474
Total Expense	3,435,188
Net Ordinary Income	-420,988
Other Income/Expense	
Other Expense	
Asset purchases-Computers	1
Asset purchases-Motor Vehicles	-0
Asset Purchases-Office equip	-1,257
Asset Purchases - Plant & Equip	-4,507
Total Other Expense	-5,763
Net Other Income	5,763
Net Income	-415,224



SERCUL
South East Regional Centre for Urban Landcare

69 Hotley Road,
Beckenham, Western Australia 6107
Telephone: 08 9458 5664
Facsimile: 08 9458 5661
Website: www.sercul.org.au

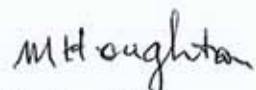
STATEMENT BY THE MANAGEMENT COMMITTEE
SOUTH EAST REGIONAL CENTRE FOR URBAN LANDCARE (INC.)

In the opinion of the Members of the Committee;

- (a) The accompanying Profit and Loss Statements are drawn up so as to give a true and fair view of the results of the Group for the year ended 30th June 2016.
- (b) The accompanying Balance Sheet is drawn up so as to give a true and fair view of the state of affairs of the Group as at the end of that period.
- (c) At the date of this statement there are reasonable grounds to believe that the Group will be able to pay its debts as and when they fall due.


The Accounts of the Group have been prepared in accordance with the applicable Australian Accounting Standards.

Signed in accordance with a resolution of the Committee.



Max Houghton
Treasurer

Date: 12 September 2016



Patricia Hart
Chairperson

Date: 12 September 2016



BOOYI CULTURAL PROGRAM

SERCUL and the Yelakitj Moort Noongar Association have joined together to present the Booyi Cultural Program, an exciting interactive educational program that celebrates the understanding and appreciation of Aboriginal and Torres Strait Islander histories and cultures. The Booyi program aims to engage people to see the land around them through the eyes of the Noongar people. In understanding this vision and appreciation, people are encouraged to value our rivers, wetlands and natural areas.

Students participating in the Booyi Cultural Program will embark on a journey through the magnificent bushland and wetland areas around the Yule Brook Homestead in Beckenham and discover the traditional practices of the Noongar people and their connection to the land. The Canning River and Yule Brook that meander past the Homestead provides the perfect opportunity for students to learn about native birdlife and the practical uses of native plants. Stories from local Aboriginal Elders will further illuminate an understanding of Indigenous history and the impacts of colonisation and settlement on local communities.

The Booyi Cultural Program is an inspiring package that offers a variety of exciting hands-on activities, including interactive nature walks, bush tucker workshops, cultural history lessons and dream time storytelling.

Kindly supported by the State NRM Program

NEW PROJECTS 2016-2017

HABITAT REHABILITATION AND SALT MARSH MOSQUITO MANAGEMENT IN THE CANNING RIVER REGIONAL PARK TIDAL FLATS

The aim of this project is to meet the needs of both vector mosquito control and natural resource management of the unique Canning River Regional Park (CRRP) tidal flats. The study will provide a benefit to both human health and environmental health. Two degraded salt marsh areas close to the Adenia Lagoon, identified with high mosquito breeding, have been selected for the field study.

This study will investigate the existing condition and assess a form of integrated habitat management and rehabilitation of the salt marsh as a long term source reduction approach to control mosquitoes in the CRRP. The restoration of the salt marsh will increase tidal influx which could greatly improve the coverage of native samphire communities, macroinvertebrates, other fauna and ecology of the salt marsh ecosystem. This method of mosquito control has been demonstrated internationally to operate effectively through a combination of flushing, increased predation and reduced oviposition.

The research data generated by this study has the potential to inform a management strategy for salt marsh restoration in the Perth region, to enhance their ecosystem function and reduce the reliance on chemical control of mosquito populations.

This project is a collaborative proposal with in-kind contributions and advice from the Department of Parks and Wildlife, the City of Canning and Curtin University.

Kindly supported by Lotterywest and NRM Community Action Grants

PATIO CONSTRUCTION

SERCUL has been successful in being awarded a grant of \$20 000 from Lotterywest for the construction of a 12 m by 6 m free standing patio. The patio will be constructed at the back of the Yule Brook Homestead and will be used by community members participating in the Booyi Cultural Education Program. The structure has been designed to comply with the Conservation Plan over the Horley Road property and visually, will be complementary to the Homestead.

SERCUL has appointed a suitably qualified builder and is currently seeking a Building Permit and Development Approval from the City of Gosnells. It is expected that construction will be completed by the end of the calendar year.

Kindly supported by Lotterywest

BENNETT BROOK EDUCATION PROGRAM

This program is an extension of the Phosphorus Awareness Project into the Bennett Brook/Saint Leonards Creek Catchment. Over the year long project residents and students in the catchment will be educated about protecting the waterways using the existing Fertilise Wise and Freshwater Fauna education programs. School students will be educated through incursions to their schools and each school will receive a Freshwater Fauna Teacher Guide package while teachers will be invited to a Professional Development session; residents will be educated through shopping centre displays, community presentations and at community events and Fertilise Wise Fertiliser Training sessions will be held for turf managers and Local Government Parks and Gardens staff.

Kindly supported by Department of Parks and Wildlife Rivers and Estuaries Division

Acknowledgement OF PARTNERSHIPS

The success of the South East Regional Centre for Urban Landcare's project delivery is a direct result of financial and in-kind contributions from the following Australian Government Departments, WA State Government Departments, Natural Resource Management Organisations, private businesses, Local Governments and community groups. We would like to acknowledge and sincerely thank you for your assistance over the 2015-16 year.



THANK YOU

The care and protection of the Natural Resources of the South Region can only happen with the ongoing support of community groups, non-Government organisations, volunteers, Local Government Authorities, State and Australian Government Departments and private business project partners.

The South East Regional Centre for Urban Landcare Executive Committee and staff sincerely thank you all and look forward to continuing our partnerships in 2016-17 to achieve an even more sustainable approach to Natural Resource Management in Perth, Western Australia.

Good luck for 2016-2017

