

Local Trees



Corymbia callophylla
Marri



Eucalyptus rudis
Flooded Gum



Melaleuca raphiophylla
Paperbark



Allocasuarina fraseriana
Sheoak

The Trillion Trees Nursery in Hazelmere provides the 4000 local native seedlings planted in each Grove site. They are planted by community volunteers including corporate groups and school children.

If you would like more information or to get involved in planting please contact:

SERCUL (details on back of brochure) or
Trillion Trees on (08) 9250 1888 or
www.trilliontrees.org.au

For more information on the Bowra & O'Dea Memorial Groves visit: www.bowraodea.com.au

Please cooperate and respect the land

- Keep sites clean
- Report vandalism to SERCUL
- **Non-Organic** materials are **NOT** permitted, including plastic flowers, photo frames or ornaments.
- Please only use plaques provided to you by Bowra & O'Dea (concrete is not necessary).
- **No planting is permitted without consent from SERCUL.**

Beckenham Memorial Park



Boardwalk to the Yule Brook Homestead



Watch a native tree grow in memory of your loved one



South East Regional Centre for Urban Landcare

1 Horley Road (off the Kenwick Link)
Beckenham WA 6107
P | (08) 9458 5664
E | sercul@sercul.org.au
W | www.sercul.org.au



BOWRA & O'DEA
RURAL HISTORIC

SERCUL
South East Regional Centre for Urban Landcare



Beckenham Memorial Park Project

The Trillion Trees Beckenham Memorial Park project, sponsored by Bowra & O'Dea, commenced in 2008 with the goal to create Memorial Groves that enhance the natural environment at this location. They are also a place for the families of Bowra & O'Dea to connect with nature and for the wider community to enjoy.

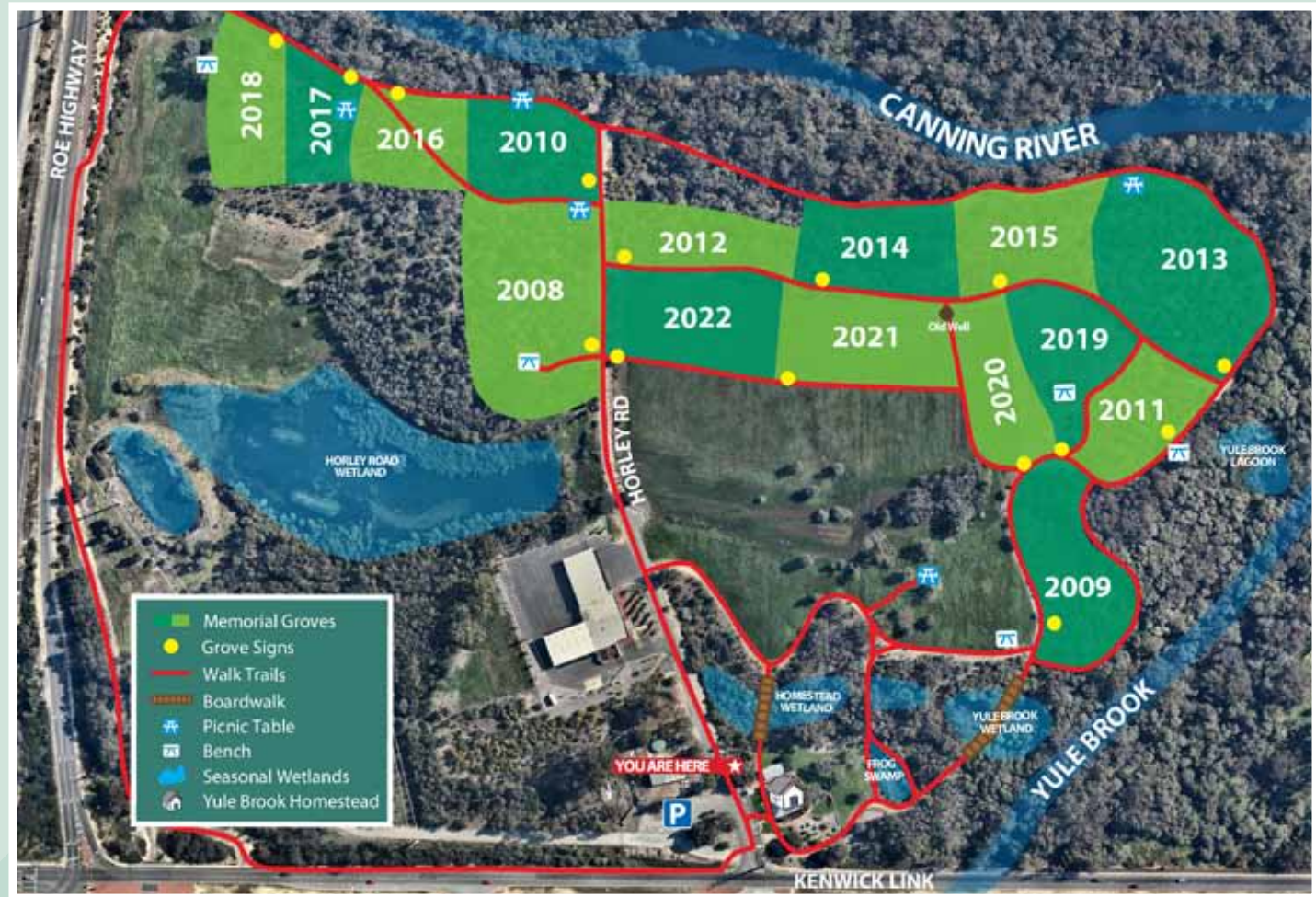
The Memorial Groves at the Beckenham Open Space will be preserved for a minimum of 25 years. This project is made possible through a cooperative agreement between:

- **SERCUL** — Contracted grounds manager
- **Trillion Trees** — Project motivators and plant suppliers
- **Bowra & O'Dea** — Sponsors, providers of plaques and the link to the families
- **WA Planning Commission** — Land managers

Placing a plaque by a tree

Your plaque goes into the Grove that matches the year in which your loved one passed.

1. **I have a plaque:** Please feel free to come to the Beckenham Memorial Park and install the plaque near a tree or shrub (NO concrete) in the Grove that corresponds with the year your loved one passed.
2. **I have a plaque but can not get it into the ground:** Come to the SERCUL office during office hours (open 8am-4pm week days).
3. **I do not have a plaque but would like to choose a tree:** Come to the Beckenham Memorial Park during office hours and the SERCUL staff will provide you with a tag to label your chosen tree.
4. **I do not have a plaque but want one:** Contact Bowra and O'Dea to purchase the plaque. NOTE: Only Bowra & O'Dea clients qualify to install memorial plaques. SERCUL does not supply plaques.



History of Beckenham Open Space

This area is currently known as the Beckenham Open Space and the Homestead has cultural heritage significance. Below outlines the known history of the property:

- **Prior to 1830:** The area was used as a river crossing by Aboriginal people and later by the settlers. The crossing was known as 'The Rapids' and is located at the end of Horley Rd.
- **1830's:** The property was granted to three officers of the East India Company as part of the Crown Grant system and was used as market gardens and farmland.
- **Early 1880's:** The Homestead was constructed.

- **1888 — 1998:** The property was sold and subdivided several times from 1888 until purchased by the WAPC in 1998. Now the land is a Public Reserve.
- **2002:** Restoration commenced on the Homestead.
- **2003:** SERCUL began operations from the Homestead.
- **2009:** The Homestead was granted conservation and heritage significance.

Since 2003, SERCUL have been restoring the previously farmed land by removing weeds and replanting native endemic species. The Memorial Grove project forms a major part of this rehabilitation work.