



# SERCUL A YEAR IN REVIEW 2018-19

ANNUAL REPORT SUMMARY

## Thank You

The achievements of the South East Regional Centre for Urban Landcare's project delivery are due to the financial and in-kind contributions from Commonwealth, State and local governments and income generated by SERCUL's Environmental Services team through its contract work. We sincerely thank all our partners and the local community across the South region for their continuing support over the 2018-19 year which has allowed us to achieve the outcomes highlighted in this report.

We greatly appreciate the opportunity to work alongside our project and industry partners, government agencies, local government, Aboriginal organisations, community groups and volunteers in the delivery of natural resource management and landcare in the South region. We share our achievements with this positive and supporting network.

As we commence the 2019-20 financial year, we look forward to continuing to work together to achieve many more positive environmental outcomes for the South region.

  
South East Regional Centre for Urban Landcare



1 Horley Road, Beckenham WA 6107 Ph: (08) 9458 5664 [www.sercul.org.au](http://www.sercul.org.au)

  
South East Regional Centre for Urban Landcare  
Download the full report at:  
[www.sercul.org.au/publications](http://www.sercul.org.au/publications)



# WELCOME

It is a pleasure to present the South East Regional Centre for Urban Landcare's (SERCUL) 2018-2019 Annual Report Summary to our partners and the community.

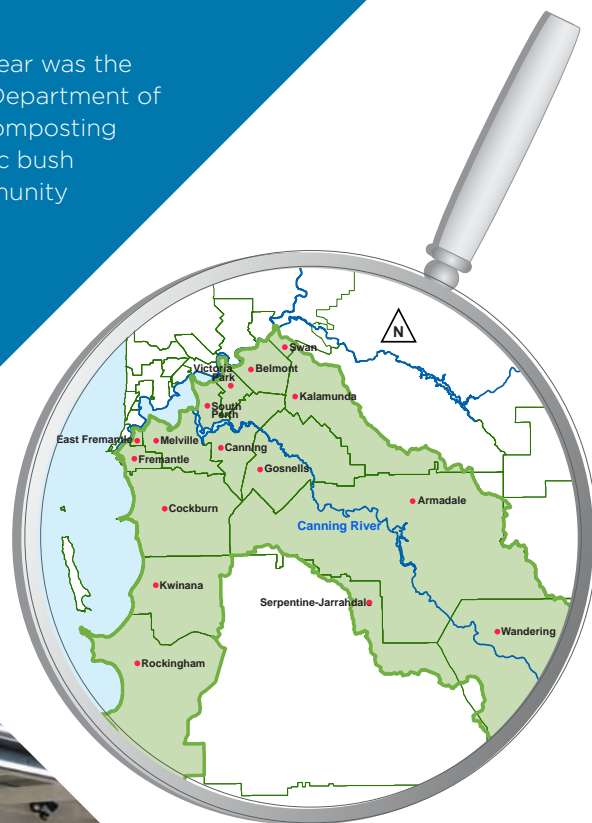
SERCUL is the sub-regional Natural Resource Management (NRM) organisation that operates within the metropolitan and peri-urban areas of the Canning River Catchment. As part of the community we work with State and Federal Government agencies, Local Governments, businesses, community groups and volunteers to care for the environment and our local communities. This is done in many ways; working to improve biodiversity, protecting riverine and wetland environments and engaging with our extensive community network to increase knowledge and skills in environmental management.

SERCUL was in a precarious financial position at the start of the 2018-2019 financial year. But I am very happy to report that in just under a year, and due to some extremely hard work by SERCUL staff and the Executive Committee, we have turned the situation around, as indicated in our Financial Report. This was achieved by reducing our overhead administrative costs where possible; some staff voluntarily reducing their hours to help save money in our largest expenses area, wages; our Environmental Services Unit attracting considerably more fee-for-service work through tenders and requests for quotes; and receiving some large grants through our landcare program.

Aside from all the environmental landcare work, one of the highlights this year was the construction of a new toilet block at SERCUL. Thanks to funding from the Department of Communities through our local MP, Bill Johnston, we now have two extra composting toilets that can be used by groups visiting SERCUL. We also held a fantastic bush tucker-themed afternoon tea as a thank you to our volunteers and community groups during National Volunteer Week.

We take great pride in this year's achievements to improve the health of our land and waterways which we have undertaken with the community and a broad range of project partners and stakeholders and look forward to continuing this work in 2019-20.

Pat Hart  
Chairperson  
SERCUL



The South Region is defined as consisting of those parts of the Cities of Armadale, Belmont, Canning, Cockburn, Fremantle, Gosnells, Kalamunda, Kwinana, Melville, Rockingham, South Perth and the Towns of East Fremantle and Victoria Park which fall within the boundary of the Swan Natural Resource Management Region.

## 2018-2019 ACHIEVEMENTS

 over **3100** individuals  
contributed

 **17 351**  
hours of volunteering labour


**\$ 800 177**  
total value of volunteering

 **86** Community and school  
on-ground restoration work  
days helped plant...

 **155 524**  
Seedlings installed


 **88** Schools engaged in  
on-ground activities and  
environmental education

**39**  
Friends of  
Groups engaged  
and supported

 **18 525**  
People received education,  
via direct information or  
on-ground contact

**48**  
sampling events

 **137**  
sample sites over **10** projects

 **SAMPLES COLLECTED**  
**599 43 48**  
Water Sediment Macrophyte

Value of volunteering: \$20/hr for children under 16 and \$50/hr for adults.

## PROJECTS

### LANDCARE & RESTORATION

- Drainage Nutrient Intervention Program
- Canning River Restoration
- Booragoon and Blue Gum Lakes
- Yagan Reserve Restoration
- Bull Creek Reserve Restoration
- Yule Brook and Horley Road Wetland
- Beckenham Memorial Groves Project
- Wetland to Waves Habitat Corridor
- Woodman Point Restoration
- Lakewood Cove Reserve Restoration
- Living Landscapes
- Hydrocotyle Eradication Program
- Amazon Frogbit Management Program

### ENVIRONMENTAL EDUCATION

- Phosphorus Awareness Project
- Fertilise Wise Fertiliser Training
- Amazon Frogbit Education Program
- Mozzie Wise Program
- Little Green Steps WA

### MONITORING & RESEARCH

- Water Quality Monitoring
- Adenia Research Program
- Horley Road Wetland - Biomonitoring

### COMMUNITY CAPACITY

- Volunteer Program
- Community Group Support
- Empowering Communities
- Work for the Dole Program
- Canning Community Landcare

