

SERCUL ANNUAL REPORT



2020



CONTENTS

Welcome _____	3
From the Chair–Pat Hart _____	4
From the CEO–Amy Krupa _____	5
SERCUL Staff and Committee _____	6
2019–20 Highlights and Achievements _____	7
Our Constitution _____	8
Our Projects _____	9
Environmental Education _____	10-13
Community Capacity _____	14-19
Landcare and Restoration _____	20-30
Monitoring and Research _____	31-34
Environmental Services _____	35
New Projects for 2020–21 _____	36
Acknowledgements and Thank You _____	37
Financial Report _____	39





WELCOME

Welcome to the South East Regional Centre for Urban Landcare's (SERCUL) 2019-20 Annual and Financial Reports to our partners, members and the community.

SERCUL is the sub-regional Natural Resource Management (NRM) organisation that operates within the metropolitan and peri-urban areas of the Canning River Catchment and the southern suburbs of Perth. As part of the community, we work with State and Federal Government agencies, Local Governments, businesses, schools, community groups and volunteers to care for the environment and our local communities. This is done in many ways: working to improve biodiversity; protecting riverine, wetland and bushland environments; and engaging with our extensive community network to increase knowledge and skills in environmental management.

Even in this COVID-19 affected world, we were able to continue working and achieve some amazing outcomes though, as expected, some of our statistics are lower than normal. We are extremely proud of this year's achievements, which were undertaken in partnership with the community and a range of other important project partners and stakeholders. Through these partnerships we have been working together to improve the health of our land and waterways.





CHAIR'S MESSAGE

PAT HART

It is with much pride but tinged with a little sadness that I table my last Annual Report for SERCUL.

SERCUL began its journey 17 years ago evolving from the Canning Catchment Coordinating Group to becoming incorporated in 2003 and has grown to be a very successful strategic Landcare organisation. This has been achieved over the years by very dedicated committees, staff and great partners.

SERCUL's success over these years has been achieved through maintaining a clear vision, strong commitment and dedication by extraordinary people. I was very fortunate when we set SERCUL up to have Julie Robert as our CEO for quite a few years. Julie and I had the same strong drive and belief in what SERCUL could achieve and together we made the most of any opportunities we saw that would benefit the objectives of SERCUL.

Worthy of a mention was a meeting on SERCUL's verandah with the then Labor nominee for the seat of Hasluck, Sharryn Jackson, just prior to the federal election in 2007. We spoke of the water quality issues the Canning River was having and the need to turn our drains to living streams. Sharryn Jackson took it on board and when the Labor party won the election we were advised there would be \$4 million coming into the Canning Catchment to undertake work in our drains. It was however very difficult getting the money over and after a lot of work by Julie and myself finally in 2010 the 'Urban Waterways Renewal' project commenced under the Water for the Future – National Water Security Plan with SERCUL delivering the project and managing the money. Fortunately at that time interest rates were 10% plus which meant that we were able to build a substantial financial cushion which has enabled us over the years to expand our role and commence our small NFP business which is now critical to our future.

It hasn't always been plain sailing with many challenges, very confronting at times, but this year's annual report

and financial statements clearly demonstrate we are certainly doing things right and heading in the right direction.

There are so many people and partners that have been on the journey with us over the years that has made SERCUL the success it is today. The Rivers and Estuaries Branch (formerly Swan River Trust) our major partner who have been with us since the beginning, a formidable partnership that has stood the test of time. Other Government agencies, local governments, politicians, businesses and last but not least our community groups and SERCUL committee members and volunteers together have made us who we are today.

While I am retiring from SERCUL I will be continuing my Landcare role with Armadale Gosnells Landcare where my journey began, as there is still so many challenges that the Canning River faces that must be resolved if the Canning River is to survive in the face of climate change. Thanks to everyone that has been with me on my SERCUL journey and a special thanks to Stephen Johnston for taking the baton over from me. Stephen is a great asset to SERCUL and I know he has the skills for leading it on to an even brighter future.



Pat Hart
Chairperson



CEO'S MESSAGE

AMY KRUPA

The 2019-20 financial year has certainly been a strange one, but also a very successful one for SERCUL. The COVID-19 pandemic luckily only affected us in a small way with the major impacts being office based staff working from home for a few months and our Environmental Services staff not travelling in vehicles together thus meeting on site each morning. As the majority of our work is outside, where physical distancing is easy to achieve, we could continue to work on our landcare projects and fulfil our contractual obligations with clients through Environmental Services thus work continued as normal with no staff losing work hours. We did notice an impact on volunteer opportunities with some planned events having to be cancelled or postponed. However, with restrictions easing around the middle of the planting season volunteer opportunities returned to normal very quickly.

We are in a strong financial position at the end of this financial year mainly due to two big contracts undertaken by Environmental Services staff, the NorthLink and Suez planting projects. We also received a large State NRM grant that allowed us to support more community groups in our region. Ongoing funding from the Rivers and Estuaries Branch – Department of Biodiversity, Conservation and Attractions supports a number of staff members at SERCUL and allows us to support our community groups, provide education opportunities and implement on ground work and monitoring. Without the support of our major partners and stakeholders, who are acknowledged on the Thank You page at the back of this Annual Report, we would not be in the successful position that we are today.

The SERCUL Constitution was changed in October 2019 to better reflect how SERCUL is actually operating. The major changes included the abolition of the Association Committee with the Executive Committee being the sole governing body. This allows for decisions to be made on a monthly basis at the Executive Committee

meetings. However, we continue to have quarterly Community Forums with community members and stakeholders that used to make up the Association Committee. We also now have two membership categories – full and associate members. Full members are community-based nature conservation and landcare organisations and their single representatives as well as executive committee members and life members. Associate members are individuals who do not represent a member organisation. Currently we have 35 conservation groups that are full members of SERCUL.

Last but not least, a big change is about to occur at SERCUL. After 17 years as the Inaugural Chairperson of SERCUL Pat Hart is retiring. Pat has been instrumental in making SERCUL the successful and reputable organisation that it is today. Pat's passion for the Canning River and the groups that help to look after it is legendary and she is well known in the landcare world for this passion. A huge thank you to Pat from myself and the SERCUL staff for your massive contribution to SERCUL which has gone above and beyond what is normally expected of a Chairperson.

Amy Krupa
Chief Executive Officer



STAFF AND COMMITTEE

STAFF EMPLOYED DURING 2019-20

Jose Alcala – HR, Payroll and Administration Officer
 Riley Ashton – Landcare Officer, ESU
 Matthew Barbour – Landcare Officer, ESU
 Daniel Barczy – Landcare Officer, ESU
 Julian Beasley – Landcare Officer, ESU
 Natasha Bowden – Education and Promotion Manager
 *Caitlin Conway – Water Quality Officer/Volunteer Coordinator
 Elbert Curtin – Landcare Officer, ESU
 *Ryan Donnelly – Landcare Officer, ESU
 *Cecil Ellis – Environmental Monitoring Officer
 Monica Estrada – Business and Finance Manager
 Erin Farley – Environmental Education Officer
 *Dan Friesen – Community and Grants Manager
 Farina Gandadjaja – Administration and Finance Officer
 Matthew Grimbly – Environmental Services Unit Manager
 Amy Krupa – Chief Executive Officer
 John Maliunas – Landcare Officer, Shed and Vehicle Manager
 Alexei McKay-Koodravsev – Landcare Supervisor, ESU
 *Daniel Millea – Landcare and DNIP Officer
 Darren O'Brien – Canning Community Landcare Officer
 Wilson Orjuela – Landcare Officer, ESU and OHS Officer
 Andy Owen – Landcare Officer, ESU
 Jayson Sekhon – Community and Grants Officer
 Edward Snelling – Assistant Landcare Officer
 Melinda Snowball – Promotions and Graphic Design Officer
 Talen Stroot – Landcare Officer, ESU
 *Russell Walczak – Landcare Supervisor, ESU
 Dr Rose Weerasinghe – Ecologist
 Cat Williams – Community and Grants Manager

AUSTRALIAN ASSOCIATION FOR ENVIRONMENTAL EDUCATION WA CHAPTER STAFF:

Megan Mentz – Little Green Steps WA Program Manager
 *Anne Pettit – Little Green Steps WA Education Officer
 *Amy Warne – Little Green Steps WA Education Officer
 Emma Malloch – Little Green Steps WA Education Officer
 Belinda Bloxsome – Waste Wise Education Officer

*No longer working - left the organisation during the 2019-2020 financial year

ESU - Environmental Services Unit

EXECUTIVE COMMITTEE

Chair: Pat Hart
 Deputy Chair: Stephen Johnston
 Member: Felicity Bairstow
 Member: Marc Lane
 Member: Kobi Bradshaw-Chen
 Member: Diane Dowdell

NORTHLINK CASUAL STAFF (2019)

Louisa Akerina
 Jennifer Borger
 Sarah Carr
 Elbert Curtin
 Dwayne Durcan
 Mason Formentin
 Emily Gambold
 Kaylin Geelhoed
 Norman Jun Bin Lai
 Emma Moulton
 James Nevill
 Siobhan Paget
 Emily Rankin
 Alan Reidy
 Darcy Reith
 Nicholas Rodriguez
 Eva Scheuerlein
 Kieran Sekuloff
 Jonas Staudt
 Talen Stroot
 Mabinte van de Belt
 Chane van der Merwe
 Danim Wolsoncroft



2019-20 HIGHLIGHTS AND ACHIEVEMENTS

\$326 660.50 VALUE OF VOLUNTEERING

108 651 PLANTS INSTALLED

7687 VOLUNTEER HOURS

39 SCHOOLS ENGAGED

33 FRIENDS OF GROUPS SUPPORTED



LAUNCH OF THE AQUATIC WEED MANAGEMENT TRAINING MANUAL

At the WA Wetlands Conference held on 31st January 2020 SERCUL launched the long awaited Aquatic Weed Management Training Manual authored by Julie Robert. Aquatic Weed Management Training was also launched in June 2020 with weed management operators learning how to economically and ecologically manage a sudden outbreak of an aquatic weed and develop a plan to control long term aquatic weed invasions.



MEETING WITH KEN WYATT, FEDERAL MEMBER FOR HASLUCK

Ken Wyatt, our local Federal Member, visited SERCUL on World Environment Day, 5th June 2020 to meet with our Executive Committee and staff. Ken toured the grounds and we were able to show him the paving and shade sail projects that were undertaken at SERCUL from funding through the Stronger Communities Programme that came through Ken's office. We also discussed our achievements and some of the issues that urban landcare faces.



STAFF TRAINING

Thanks to funding through a State NRM grant we were able to hold a staff training session at Bickley Outdoor Recreation Camp in March. This overnight training session allowed staff to build stronger relationships with each other, through team building activities like constructing and launching a raft and looking at communication styles. We provided new staff with the history of SERCUL and the successes and challenges that have shaped SERCUL into the organisation it is today. Strategic planning also occurred to provide a way forward for SERCUL over the next five years.



OUR CONSTITUTION

SERCUL, as an incorporated, independent community environmental organisation, is able to bring together the community, State and Federal Government agencies, Local Governments, businesses and educational institutions to plan for, develop and implement projects that will improve the natural environment using a strategic and integrated approach.

SERCUL is a sub-regional organisation that operates within the metropolitan and peri-urban areas of the Canning River Catchment. The area covered takes in most of the southern and eastern suburbs of Perth and includes Dyarguu (the Canning River), the Southern-Wungong River and parts of Derbarl Yaragan (the Swan River).

VISION

To have the Natural Resources of the South Region of Perth managed in a healthy and sustainable manner by all stakeholders for future generations.

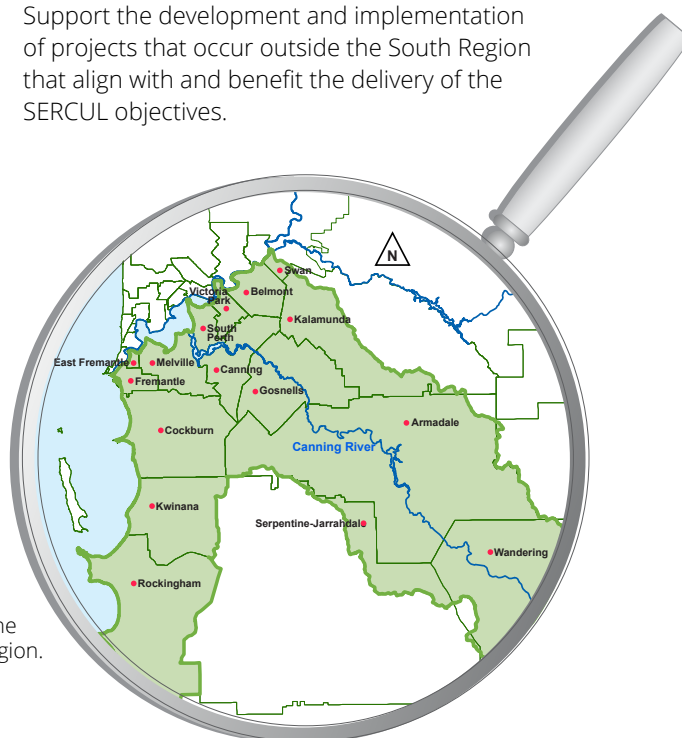
MISSION

To use integrated natural resource management to foster cultural change in how the community perceives and interacts with the environment, whilst promoting and actively participating in the improvement of the health of waterways and other ecosystems within the South Region.

The South Region is defined as consisting of those parts of the Cities of Armadale, Belmont, Canning, Cockburn, Fremantle, Gosnells, Kalamunda, Kwinana, Melville, Rockingham, South Perth and Towns of East Fremantle and Victoria Park which fall within the boundary of the Swan Natural Resource Management Region.

OBJECTIVES

- a. To identify priority Natural Resource Management issues in the South Region in partnership with Community Groups, Local Government, State Government and Industry.
- b. Administer the South East Regional Centre for Urban Landcare Inc. funds to promote the objectives and outcomes of the Association.
- c. Assist Community Groups, State and Local Government in the coordination and delivery of Natural Resource Management in the South Region.
- d. Support and encourage the implementation of best management practice of Natural Resources within the South Region.
- e. Recognise and embrace cultural and natural heritage.
- f. Foster research on matters relating to the South Region's natural and cultural heritage.
- g. Work in partnership with Community Groups, Local Government, State Government and Industry to educate the wider community to protect our natural resources.
- h. Support and encourage the formation and training of community environment groups.
- i. Support the development and implementation of projects that occur outside the South Region that align with and benefit the delivery of the SERCUL objectives.





OUR PROJECTS

PROJECT LINKS TO OUR OBJECTIVES

Projects	Objectives								
	a	b	c	d	e	f	g	h	i
ENVIRONMENTAL EDUCATION									
Phosphorus Awareness Project									
Mozzie Wise Program									
Little Green Steps WA									
COMMUNITY CAPACITY									
Community Group Support									
Volunteer Program									
Empowering Communities									
Canning Community Landcare									
LANDCARE AND RESTORATION									
Drainage Nutrient Intervention Program									
Alison Baird Flora Reserve									
Nurdi Park Living Stream									
Empowering Communities - Bickley Recreation Camp									
Lakewood Cove Reserve Restoration									
Resilient Landscape Program – Living Landscapes									
Canning River – Horley Road									
Yule Brook – Horley Road Wetland Restoration									
Canning River Regional Park Restoration									
Beckenham Memorial Groves Project									
Horley Road Wetland – Drainage System									
Murdoch University – MERG									
Bull Creek Catchment Restoration									
Booragoon and Blue Gum Lakes									
Hydrocotyle Eradication Program									
Amazon Frogbit Management Program									
MONITORING AND RESEARCH									
Amazon Frogbit Research Program									
Water Quality Monitoring									
Horley Road Wetland – Biomonitoring									
Adenia Research Program									



ENVIRONMENTAL EDUCATION

ALGAE BUSTER



PHOSPHORUS
AWARENESS
PROJECT

PHOSPHORUS AWARENESS PROJECT

The Phosphorus Awareness Project (PAP), coordinated by Natasha Bowden, is an education campaign that aims to educate the general community about the impact of too many nutrients in the Swan and Canning River systems and wetlands, and how to reduce those levels.

For most of the 2019/20 financial year we delivered our programs to schools and the community in much the same way as we have for the past 17 years. However, the restrictions associated with COVID-19 saw a dramatic change in how we operated our program. During this time, we had to adapt quickly and used this unexpected situation as an opportunity to develop new ways of presenting to the community and school children by creating a SERCUL Phosphorus Awareness Project YouTube Channel. 12 videos were created covering four topics: Nutrients and Algae, Southwestern Snake-necked Turtles, Traditional Uses of South West WA Plants, and Aquatic Weeds and Feral Fish in the Perth Region. Each topic was covered in videos aimed at different age groups – Early Years (Kindy to Year 2); Middle Primary School (Years 3 – 6) and High School and Adults. These videos had 600 hits in three months.

Despite the challenges presented by the COVID-19 situation, PAP has once again delivered far in excess of it's grant requirements. Whilst the cancellation of many incursions, expos and events over the last six months has meant we have not been able to spread our message as much as we would have liked, we still managed to undertake 144 school incursions, 8 displays, 26 community presentations, 2 Fertilise Wise training sessions and 2 Canoeing on the Canning Professional Development days.

The project is funded by the Department of Biodiversity, Conservation and Attractions, Parks and Wildlife Service.



Bibra Lake Primary School students planting around their frog pond



Bibra Lake Primary School students with their donated plants from SERCUL



White Gum Valley Primary School planting day



Bibra Lake Primary School students learning how nutrients affect our waterways



ENVIRONMENTAL EDUCATION



Rockingham Beach High School students learning about the catchment model



Rockingham Beach High School participating in the Clean Drains River Gains campaign

SCHOOLS

144 PRESENTATIONS to 3575 students from 35 schools from Kindy to Year 12.
25 PLANTING SESSIONS during which 1136 plants were planted by 833 students equating to 630 volunteer hours.

COMMUNITY

8 DISPLAYS at the Nature of Science Community Expo, Changing Your World Fair, Garden Clubs and Societies Fairs, Kelmscott Show, Lynwood SHS Sustainability Expo, Girl Guides Trekabout on the Swan River, Lawn Expo, speaking with more than 4010 people. 26 COMMUNITY PRESENTATIONS to at least 997 people.

FERTILISE WISE

Two FERTILISE WISE TRAINING SESSIONS held – one for the City of Mandurah attended by 20 staff members and one at the Canning River Eco Education Centre attended by 12 people from various local governments and turf businesses.

FERTILISE WISE COMMUNITY WORKSHOP held for the City of Mandurah attended by 5 community members.

NUTRIENT SURVEY

2019 LGA Annual Nutrient Survey Report published.
2020 Nutrient Survey sent in June 2020 with 18 responses so far.

EVENTS

Two CANOEING ON THE CANNING WORKSHOPS held one with 19 teachers and community members attending and one for Gooseberry Hill Primary School with 36 teachers and support staff.

RESOURCES

Supported groups on 23 occasions with resources. Over 336 Fertilise Wise Project brochures, 1031 Grow Local Plants brochures and 7705 Phosphorus Awareness Project resources distributed.

Appeared in 49 media articles including online via newsletters, YouTube, newspaper articles and Facebook. Four Education Newsletters distributed to 432 recipients.

Created five Noongar Six Seasons Garden Designs for Applecross PS, Ashburton Drive PS, East Kenwick PS, Rockingham SHS ESC and Rossmoyne PS.



ENVIRONMENTAL EDUCATION

MOZZIE WISE PROGRAM

The Mozzie Wise Education Program, coordinated by Natasha Bowden and Dr Rose Weerasinghe, was developed as a key component of SERCUL's integrated mosquito management approach within the Perth Region. SERCUL produced the Mozzie Wise Education Program and associated resource materials with the support of the Department of Health WA.



The aim of the program is to educate local communities and school children on all aspects of mosquito breeding prevention and personal protection and to increase children's science knowledge to help them understand the effect of their actions on the environment. Informed communities that act upon their knowledge play a critical role in preventing mosquito borne-diseases, providing mosquito control and reducing the use of chemicals.

The Mozzie Wise School Educational Program is linked to the relevant Science Learning Area of the National Curriculum and provides a Teacher's Guide for levels from Kindergarten through to Year 10.

This year has seen two Mozzie Wise school holiday workshops conducted at the City of Bayswater with 25 children attending. Three Being Mozzie Wise incursions were presented to Rossmoyne River Rangers (33 students) and Casa Mia Montessori (31 students).

Four Being Mozzie Wise online learning packages were developed for Early Learners, Middle Primary School, High School and Adults for the City of Bayswater.

A Mozzie Wise educational activity stall, material distribution and mosquito management surveys were conducted at the Community Science Expo, City of Canning.

The program is funded by the City of Bayswater and Town of Bassendean with in-kind funding from SERCUL.



Casa Mia Montessori students learning about Mozzie Wise with Rose

ONLINE LEARNING

Development of 4 Mozzie Wise packages

SCHOOLS

5 presentations to 81 students



ENVIRONMENTAL EDUCATION

LITTLE GREEN STEPS WA PROGRAM



Little Green Steps WA (LGSWA) is a program of the Australian Association for Environmental Education WA Chapter with HR management provided by SERCUL. The program is coordinated by Megan Mentz (Program Manager), Emma Malloch (Education Officer) and Anne Pettit (Casual LGSWA Educator).

LGSWA supports Education for Sustainability (EfS) in the early years sector. This includes childcare centres, family day care, primary schools, preschools, kindergartens, and out of school hours care services for children aged 0-8 years. LGSWA provides professional development workshops, resources, newsletters, ideas, expo demonstrations and networking opportunities to anyone that would like to improve their understanding of sustainability and link these practices with the Early Years Learning Framework and the National Quality Standard.

LGSWA has partnered with the Cities of Canning, Cockburn, Melville and the Waste Authority this year. The large partnerships entail an LGSWA staff member focusing specifically in two local government areas for the equivalent of one day a week, the City of Melville was for individual workshops, and the Waste Authority for one day a week for three years.

KEY ACHIEVEMENTS

- Began a three year partnership with Waste Wise Schools, a two year partnership with the City of Cockburn and continued an ongoing open-ended partnership with the City of Canning.
- Delivered six Reducing Waste workshops (two webinars) across Perth and Busselton regions. Delivered four extra Sustainability Workshops in Perth for Meerilinga, Melville, Collie and Mercy Care.
- Initiated new Biodiversity workshop and commenced planning for the new Planning for Sustainability workshop.
- Completed the Sustainability Directory for Early Years Educators in the City of Cockburn.
- Attended four community events in this period; Community Science Expo in Aug 2019, Teddy Bear's Picnic Cockburn in Oct 2019, Changing Your World Fair 2020 and Riverton Stocklands community engagement Oct 2019.
- Held a Strategic Planning Day for LGSWA.

WORKSHOPS

Total of 17 workshops delivered attended by 400 participants.

MEDIA

1770 people subscribed to our mailing list, up from 1380 last FY. Four newsletters sent.

VOLUNTEERS

9 volunteers have contributed 360 hours of volunteering with the value equating \$18 000

59

MEMBERSHIPS



COMMUNITY CAPACITY

COMMUNITY GROUP SUPPORT

Engaging and supporting our community remains a major focus for SERCUL staff, where we serve as a hub for environmental groups to build their capacity, enable them to access funding and ensuring their project success by establishing strong partnerships. As community groups are as diverse as they are many, we adapt our assistance to suit each of their individual needs.

SERCUL continues to provide a wide range of support services to the landcare community within our region. These are not limited to:

- assistance with grant writing, sponsorship and financial management
- access to tools and equipment
- developing bushland action plans
- supporting community events
- technical advice and support
- native and weed plant ID
- weed control techniques
- educational opportunities, work experience placements
- training workshops
- OHS advice and guidance on safe working practice.

SERCUL provides financial management and/or payroll assistance to the following community groups:

- Bannister Creek Catchment Group
- Wilson Wetlands Action Group
- Canning River Regional Park Volunteers
- Friends of Queens Park Bushland
- Australian Association for Environmental Education WA Chapter.

Through a partnership with the South West Group and funded by the Myer Foundation, SERCUL provided assistance to the Friends of Samson Park to help them reform, wrote a new constitution for the Piney Lakes Community Garden and provided advice on succession planning and recruiting volunteers to Friends of Cantonment Hill, Friends of Booyeembara Park, Friends of Clontarf Hill and Cockburn Community Wildlife Corridor.



Darren O'Brien, Canning Community Landcare Officer, accepted the Bannister Creek Catchment Group SALP funding certificate, on their behalf



Volunteers from the Friends of Forrestdale planting



COMMUNITY CAPACITY

SERCUL sponsored grants and/or grant applications for the following groups through 2019-20:

- Bickley Outdoor Recreation Camp
- Cockburn Community Wildlife Corridor
- Friends of Alison Baird Reserve
- Friends of Booragoon and Blue Gum Lakes
- Friends of Booyeembara Park
- Friends of Brixton St Wetlands
- Friends of Bungendore Park
- Friends of Clontarf Hill
- Friends of Forrestdale
- Friends of Fremantle Beaches
- Friends of Gabbiljee (Bull Creek Catchment)
- Friends of Harrisdale Swamp
- Friends of Hollis Park
- Friends of Jandakot Regional Park
- Friends of Jirdarup (Kensington Bushland)
- Friends of Paganoni Swamp
- Friends of Samson Park
- Friends of the Spectacles
- Friends of Wireless Hill
- Murdoch Environmental Restoration Group
- Wilson Wetlands Action Group

*Generously supported by the following funding bodies:
Department of Biodiversity, Conservation and Attractions
– Community Rivercare Program, Australian Government,
Communities Environment Program, Foundation for
National Parks & Wildlife, City of Rockingham Local
Government Funding (to Paganoni Bushland), Perth NRM
SALP, Perth NRM Swan Canning River Recovery Program –
Stage 2, WA State NRM Community Stewardship Program
and SERCUL.*



Friends of Bull Creek Catchment weeding day with assistance from SERCUL

33
FRIENDS OF COMMUNITY GROUPS ASSISTED

36
AUSPICED GRANTS FOR FRIENDS OF GROUPS

9
WEBPAGES HOSTED FOR FRIENDS OF GROUPS

5
GROUPS PROVIDED WITH FINANCIAL
MANAGEMENT ASSISTANCE

6
GROUPS PROVIDED WITH PUBLIC
LIABILITY INSURANCE

35
COMMUNITY GROUP MEMBERS OF SERCUL

COMMUNITY CAPACITY

VOLUNTEER PROGRAM



SERCUL's volunteer management program, coordinated by Caitlin Conway and now Jayson Sekhon, allows volunteers to learn, gain experience and give back to the community whilst contributing valuable on-ground and administrative work. In 2019-20, COVID-19 presented difficult setbacks and limitations to what was possible. Despite this, the program managed to accommodate numerous volunteering groups and individual volunteers who have all helped SERCUL enormously. Based on their skill set, passion and interests, these volunteers have assisted with an array of activities including administration, research and monitoring and on ground landcare restoration.

This year we had 40 active volunteers who have contributed a total of 1128 hours of in kind labour to our many onground landcare and research projects and support for our administration team. We have had continued support from the Bentley Health Service crew maintaining our homestead gardens, they have contributed over 100 hours and in May 2020 we partnered with the Department of Justice Young Offenders Program with participants helping to maintain the grounds around the SERCUL office including paving.

We would like to thank all the volunteers for their continued dedication and support to our organisation. A special mention to Doug Murphy who has been volunteering with SERCUL for 8 years and contributed over 250 hours this past financial year.



This program is made possible through funding from the Department of Biodiversity, Conservation and Attractions, Parks and Wildlife Service and the State NRM Program.

40
ACTIVE VOLUNTEERS

1128
VOLUNTEER HOURS

\$56 400
VALUE OF VOLUNTEERING

Three dedicated volunteers - Trish, Lesley and Emily assisting with our landcare projects



COMMUNITY CAPACITY

EMPOWERING COMMUNITIES

Enabling and Sponsoring Volunteer Groups Delivering On-Ground Outcomes

This WA State NRM funded project now ends its second full year of implementation and was coordinated by Dan Friesen and now Cat Williams. Despite a short cessation in activity while Western Australia managed its COVID-19 outbreak, the nine sponsored groups contributed many thousands of hours in weed removal, revegetation planting, seed collection, litter removal, dieback protection and monitoring.

SERCUL has supported the groups through assisting with landcare events, equipment loan and plant ordering. SERCUL also holds funds and provides financial management on behalf of these unincorporated groups. COVID-19 has changed the nature of our events for a long time to come, with social distancing measures and modified hygiene protocols in place concerning food handling and tool use. We are looking at how our support might need to be varied in future years taking these measures into account.

The volunteers have persisted with their planned activity as much as they were able through this period and have contributed significant time and effort into seeing their projects through.

This project is funded through the WA State NRM Community Stewardship Grant.

SUPPORTED GROUPS

- **Friends of Paganoni Swamp** – Paganoni Swamp, Rockingham Lakes Regional Park, City of Rockingham
- **Friends of the Spectacles** – The Spectacles, Beeliar Regional Park, City of Kwinana
- **Friends of Clontarf Hill** – Clontarf Hill, Beaconsfield
- **Friends of Booyeembara Park** – Booyeembara Park, Fremantle
- **Friends of Hollis Park** – Hollis Park, South Fremantle
- **Friends of Fremantle Beaches** – Leighton Beach, North Fremantle
- **Cockburn Community Wildlife Corridor** – Blackwood Avenue, Hamilton Hill
- **Friends of Wireless Hill** – Wireless Hill, Ardross
- **Friends of Bull Creek Catchment** – Bull Creek, Melville



Friends of the Spectacles practicing social distancing during COVID-19 restrictions. Photo kindly supplied by the group.

141
LANDCARE ACTIVITIES

16 393
PLANTS INSTALLED

7802
VOLUNTEER HOURS

\$390 100
VALUE OF VOLUNTEERING

**Note: these figures are totals for the first 2 years of this project.*

COMMUNITY CAPACITY



CANNING COMMUNITY LANDCARE

SERCUL, via a funding partnership with the City of Canning, continues to provide support to the Canning environmental community and Bannister Creek Catchment Group (BCCG) through provision of a Community Landcare Officer, Darren O'Brien. It has been a busy year for the BCCG, continuing its landcare work through 2020 and experiencing the many difficulties associated with COVID-19 while still being successful in securing funding for three projects and delivering the outcomes of each project.

The Canning Community Landcare Officer has supported five Canning groups including Canning River Regional Park Volunteers, Friends of Queens Park Bushland, Friends of Jandakot Regional Park, Canning River Residents Environment Protection Association and Wilson Wetlands Action Group with planting activities and continues to work closely with the Department of Biodiversity, Conservation and Attractions; Department of Water and Environmental Regulation (DWER) and the Water Corporation in the restoration of the Bannister Creek and its wider catchment area.

COMMUNITIES CREATING RESILIENT BUSHLAND CORRIDORS



This project aims to establish an ecological linkage between the Bannister Creek Park and Adenia Park area with infill planting within both parks to increase a native buffer distribution and further address erosion issues along the banks of Bannister Creek.

A total of nine events were held in this financial year with students from Lynwood SHS, Cannington Community College, Council On International Educational Exchange and Murdoch TAFE taking part in planting along with Conservation Volunteers Australia and BCCG members. A total of 211 volunteers contributed 492 hours of in kind labour to the project undertaking activities such as weed control and planting.

This project is funded through the WA State NRM Community Stewardship Grants.



Riverton Primary School planting day

4.8 HA
WEED MANAGEMENT

6034
PLANTS INSTALLED

492
VOLUNTEER HOURS

\$19 475
VALUE OF VOLUNTEERING



SERCUL staff member, Dan Millea and DBCA corporate volunteers planting into the creek bank at Bannister Creek



COMMUNITY CAPACITY



CANNING COMMUNITY LANDCARE

IMPROVING UNDERSTOREY DIVERSITY IN BANNISTER CREEK CATCHMENT BUSHLAND



Bannister Creek Primary School planting day

The Understorey Diversity Project focuses attention on infill planting to replace mature tree deaths and manages erosion on the creek banks through riparian planting. Adaptive weed management is used with careful chemical application techniques to reduce off-target damage on existing native flora diversity.

This financial year has seen 124 volunteers from Bannister Creek Primary School, Aquinas College, CVA, SERCUL volunteers and BCCG members participate in the installation of 3480 plants throughout this project site.

This project is funded through the Swan Aloca Landcare Program.

3.9 HA
WEED MANAGEMENT

3480
PLANTS INSTALLED

184.5
VOLUNTEER HOURS

\$6800
VALUE OF VOLUNTEERING

ENHANCEMENT OF BANNISTER CREEK & CANNING RIVER RP BOUNDARY

The BCCG has been able to secure funding for three years with the aim to undertake weed control to strengthen the condition and connectivity functions of an area of the Canning River Regional Park (CRRP) between Bannister Creek and Lambertia Creek (including an adjoining area of Bannister Creek). Now in its second year the project has seen 63 volunteers contributing a total of 270 hours this financial year. Three corporate events were held involving DBCA, BHP and Application Engineering and four community days involving CVA and SERCUL volunteers. They contributed to the installation of 11 032 plants.

This project is funded through the Department of Biodiversity, Conservation and Attractions Community Rivercare Program.



DBCA corporate planting day at the Bannister Creek Rivercare site

5.35 HA
WEED MANAGEMENT

11 032
PLANTS INSTALLED

270
VOLUNTEER HOURS

\$13 000
VALUE OF VOLUNTEERING



LANDCARE AND RESTORATION

DRAINAGE NUTRIENT INTERVENTION PROGRAM – DNIP

SERCUL Officers, Daniel Millea and now Jayson Sekhon, assisted the Department of Biodiversity, Conservation and Attractions Parks and Wildlife Services with coordinating and delivering monitoring and maintenance activities at Drainage Nutrient Intervention Program sites within the Cities of Canning and Gosnells. These sites include Wharf Street Wetland, Anvil Way Wetland, Liege Street Wetland, Manley Street Basin and Bickley Road Basin. SERCUL's role includes liaising with partners, monitoring progress at DNIP sites and reporting to DBCA.

This financial year has seen the completion of invasive weed mapping at Liege Street, Wharf Street and Anvil Way. Removal of persicaria from the inlet and internal weir and dogleg section at Anvil Way, the removal of bacopa from the outlet section of Liege Street and continual water quality monitoring of all DNIP sites.



Basin at Liege Street Wetland

This project is funded by Department of Biodiversity, Conservation and Attractions Parks and Wildlife Services.

ALISON BAIRD FLORA RESERVE

PROTECTING BIODIVERSITY AND IMPROVING RESILIENCE



Volunteers planting at Alison Baird Reserve

The Alison Baird Reserve is a fully fenced portion of the Greater Brixton Wetlands, and is owned by the University of Western Australia. The reserve contains a broad diversity of flora, including some significant species. The friends group sought support to restore a section of the reserve which had exotic trees spreading in it from a property nearby, the trees had been removed, but a bare area remained which was rapidly being colonised by weeds.

The project initially commenced in 2017 with seed collection for the propagation of local provenance species and weed control over a 3 ha area to remove introduced grasses such as perennial veldt grass, and bulbous weeds including Arum lily.

The project has experienced some delays due to the nature of collecting and propagating local seed, these activities cannot be achieved within a one-year time frame. However, in June a community planting day with the Friends of Alison Baird Reserve was held to install the plants and the project was completed.

A total of 27 volunteers attended a 'gladdy grab' event and revegetation day contributing a total 132 hours. 2300 stems of local provenance plants were installed, representing 25 species from Alison Baird Reserve.

This project is funded by Perth NRM SALP program and partnered with Friends of Alison Baird Reserve and the University of Western Australia.

2300
PLANTS INSTALLED

132
VOLUNTEER HOURS

\$3960
VALUE OF VOLUNTEERING



LANDCARE AND RESTORATION

NURDI PARK LIVING STREAM

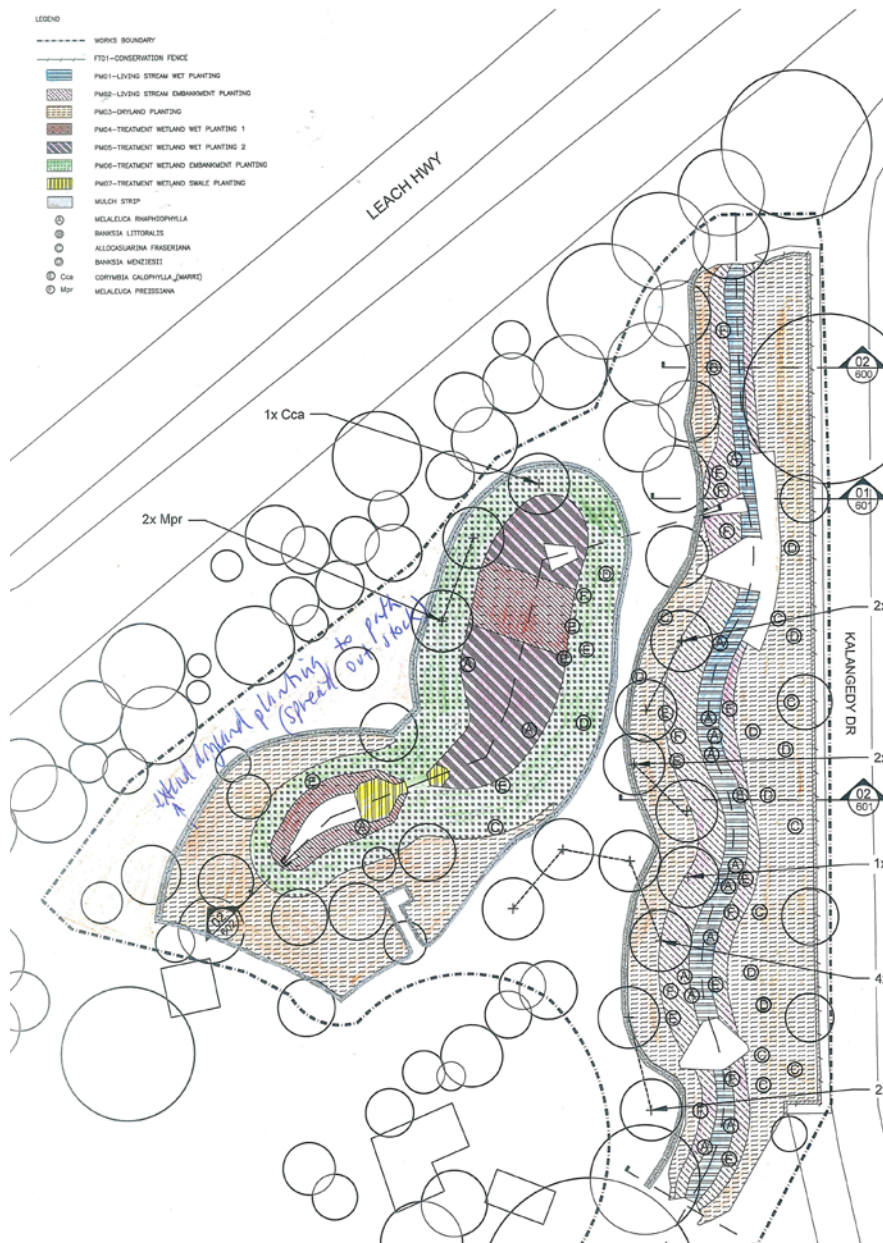
Nurdi Park has been on the radar of the City of Canning for many years. A fenced, trapezoidal drain runs through the reserve in Riverton, which is essentially a reticulated lawn with stands of remnant paperbark. The water is nutrient rich and enters the Canning River adding to the problem of algal blooms in Summer months.

Initially, SERCUL was working with the City of South Perth to develop a project at Bodkin Park however, due to a number of reasons this project could not proceed, and the City of Canning were ready to step in with the Nurdi Park project.

This project was coordinated by Dan Friesen and now Cat Williams and aims to remove the fenced areas and open up the drain to form a more natural creek aesthetic and install erosion control measures and native plants. In addition to this a water treatment basin will be constructed, so that water can be diverted and held for nutrient stripping before being returned to the creek in an improved state.

Much time had lapsed toward the project completion deadline allowed for within this grant so the partnership has been under considerable pressure to complete all the stages of the work. To date, the basin work is approved and will commence early in the next financial year with an installation of erosion control, approximately 20 000 plants, fencing, mulching and path re-alignment.

This project is funded by the City of Canning, Water Corporation and Perth NRM Swan Canning River Recovery Program – Stage 2.



Nurdi Park initial concept landscape plan



LANDCARE AND RESTORATION

EMPOWERING COMMUNITIES

COMBATting THE IMPACTS OF URBANISATION AT BICKLEY OUTDOOR RECREATION CAMP



Bickley Brook at the Bickley Outdoor Recreation Camp

Over several years SERCUL Officers, Russell Walczak and now Cat Williams, have been assisting the camp staff with revegetation and weed control of the significant bushlands surrounding the camp and Bickley Brook. The camp offers numerous opportunities for youth involvement in land care through participation in planting events. Also, the site is significant, surrounded by Banyowla Regional Park and containing the Bickley Brook reservoir.

Although work this year was compromised by COVID-19, works are to continue with the development of interpretive signage and a walking trail to explore the cultural and natural values of the site.

Spray work to control grasses and watsonia has been carried out in preparation for planting later in the year. Local Orange Grove Primary School students will be assisting with the planting with in-kind supervision provided by SERCUL.

This project is funded through the WA State NRM Community Stewardship Grants.

BICKLEY BROOK WQIP

LAKEWOOK COVE RESERVE RESTORATION

This project, coordinated by Dan Friesen and now Jayson Sekhon, is an extension of the Mandarin Road Urban Waterways Renewal site and in partnership with the City of Gosnells and DBCA, SERCUL addressed the infestation of introduced grasses and various woody weeds and the revegetation of native plants (wetland and dryland species) across 3059 m² of Lakewook Cove Reserve. This will improve the sites biodiversity, increase natural habitat values and provide water quality outcomes for the Bickley Brook.

All woody weeds and priority weeds have been controlled this financial year with the installation of 8900 plants to be planted August 2020 followed with post-planting weed control around the revegetated areas.

The project is funded by the Department of Biodiversity, Conservation and Attractions, Parks and Wildlife Service.



Weedy areas at Lakewook Cove Reserve





LANDCARE AND RESTORATION

RESILIENT LANDSCAPE PROGRAM – LIVING LANDSCAPES

IMPROVING THE CONDITION OF THREATENED ECOLOGICAL COMMUNITIES IN THE SWAN NRM REGION

PROJECT LOCATIONS – Brixton St Wetlands, Paganoni Swamp and Forrestdale Lake

This multi-year project, coordinated by Dan Friesen and now Cat Williams, focusses on protecting and improving three Threatened Ecological Communities (TEC) of the Swan NRM region. The three project TEC's include 'Banksia Woodlands', 'Tuart Woodlands' and 'Clay Pans' found across large reserves in the south-east region of Perth. This financial year represents the completion of the second year of work under this funding.

Activities carried out include fencing to restrict illegal access by 4x4 and trail bikes, control of pest animals, removing weeds and dumped rubbish. There is also seed collection, weed mapping and revegetation for the supply of provenance plants into these valuable bushlands.

These three bushlands are significant in size, and the work draws upon the local knowledge of the volunteers, many of whom have worked in these bushlands for many years. This strong community involvement in all stages of the program, and in partnership with DBCA officers, demonstrates the importance of collaboration to achieve positive results in landcare.

PROJECT OUTCOMES

- 152 ha of weed control
- 773 ha of feral animal control targeting Cats, Foxes, Red Deer, European Honey Bees and Rabbits
- 7 community engagement workshops
- 12 community field landcare days
- 2 flora surveys
- 4.6t of rubbish removed, mainly green waste material
- 500 m of fencing installed
- 28 signage, gates and surveillance camera structures installed to deter dumping at Brixton St Wetlands
- Seed collection carried out in Paganoni Swamp.

Project Partners include Friends of Brixton Street Wetlands, Friends of Paganoni Swamp, Friends of Forrestdale and Department of Biodiversity, Conservation and Attractions. Funded by Perth NRM through the Resilient Landscape Program.



Direct seeding at Paganoni. Photo courtesy of DBCA/Friends of Paganoni

LANDCARE AND RESTORATION

CANNING RIVER - HORLEY ROAD

CANNING RIVER FORESHORE RESTORATION AND ENHANCING LINKAGE WITH HORLEY ROAD WETLAND



Canning River at Beckenham Open Space

This two-year project coordinated by Melinda Snowball commenced in July 2019 with a plan for weed control and revegetation to improve the connectivity of the Horley Wetland southwards to the Canning River. Over years of restoration through the Bowra and O'Dea Memorial Grove Scheme the bushland has become dominated by canopy with little understorey. The bushland supports a population of Black-tailed monitors (*Varanus tristis*) plus many birds, macro-invertebrates and smaller reptiles and frogs.

Macro-invertebrate surveys involving environmental science student volunteers are programmed through the life of the project to provide indicative data on the water quality and species diversity. Five surveys were carried out through this financial year with assistance from volunteers from South Metro TAFE, North Metro TAFE and Curtin University. Additional Citizen Science surveys of frogs and birds in the area were provided by a Riverton Primary School student volunteer.

Funding will also facilitate Japanese Pepper and Olive removal and revegetation along a 600 m length of the Canning River. Over 9000 plants will be installed in winter 2020, with further revegetation to be completed in 2021.

This project is funded through the Department of Biodiversity, Conservation and Attractions Community Rivercare Program.

YULE BROOK - HORLEY ROAD WETLAND RESTORATION



Manual weed control through the planting site at Yule Brook boardwalk

This project, coordinated by Melinda Snowball, takes in the Yule Brook and Horley Road Wetland in Beckenham and will contribute to the ongoing weed management and rehabilitation of these sites through previous State NRM and other funded projects. Currently in its second round of State NRM funding the first year has seen 3323 plants installed into the Yule Brook floodplain engaging students from two schools plus the attendance from a range of students via the CVA school holiday landcare program and the CVA Fostering Integration Program, a series of sessions for adult females (recent migrants) residing in the City of Canning. Weed control was carried out over the 5 ha of floodplain using both manual and chemical techniques.

Through this project SERCUL hosted water quality workshops for Environmental Science Students and engaged students from four educational establishments who assisted with water quality assessments across the floodplain.

This project is funded through the WA State NRM Community Stewardship Grants.

5 HA
WEED MANAGEMENT

3323
PLANTS INSTALLED

214
VOLUNTEER HOURS

\$5122.50
VALUE OF VOLUNTEERING



LANDCARE AND RESTORATION

CANNING RIVER REGIONAL PARK RESTORATION

The project, coordinated by Russell Walczak and now Darren O'Brien, encompasses two sites within the Canning River Regional Park in which the aim is to revegetate degraded areas while also completing weed control of priority species to protect and enhance existing remnant vegetation and also allow new revegetation areas to be established. Currently in its fifth year of management by SERCUL the project continues to see excellent results.

Entering its seventh year of funding, we continue to expand the revegetation areas and control priority weeds across the two sites spanning 12 ha within the Canning River Regional Park.

This year has seen 6000 plants installed by SERCUL volunteers and the CVA migrant women's program.

This project is funded through the WA State NRM Community Stewardship Grants.



CVA Women's Migrant Program participants planting in the Regional Park

6000
PLANTS INSTALLED

51
VOLUNTEER HOURS

\$2550
VALUE OF VOLUNTEERING

BOWRA & O'DEA AND TRILLION TREES BECKENHAM MEMORIAL GROVES PROJECT



Photo by Trillion Trees - Members planting for National Tree Day 2019

The Bowra & O'Dea and Trillion Trees Beckenham Memorial Groves project, coordinated by John Maliunas, commenced in 2008 with the goal to create Memorial Groves for the families of Bowra & O'Dea clients. Each Grove has approximately 4000 trees and native plants. This project will continue until 2022, with each established Memorial Grove being preserved for a minimum of 25 years.

This year we hosted four planting days, one with Sathaya Sai, two events with Bowra & O'Dea staff members and Trillion Trees volunteers and one event with Carey Baptist College. A total of 207 volunteers installed 5320 plants.

This project is funded by Bowra & O'Dea Funeral Directors and supported by Trillion Trees.

5320
PLANTS INSTALLED

495.5
VOLUNTEER HOURS

\$8160
VALUE OF VOLUNTEERING



LANDCARE AND RESTORATION

HORLEY ROAD WETLAND - BASIN 1

REHABILITATION OF THE DRAINAGE SYSTEM OF THE WETLAND

Coordinated by Dr Rose Weerasinghe, SERCUL has been trialling integrated approaches of rehabilitation techniques to improve the Horley Road Wetland since 2016. The Horley Road Wetland was recognised as a Healthy Wetland Habitat and initial rehabilitation activities were funded by the Department of Biodiversity, Conservation and Attractions (DBCA). The wetland was previously dominated by exotic grasses (*Paspalum distichum* and *Cynodon dactylon*) and other weeds, which can prevent the germination of native wetland species, reduce macroinvertebrate habitat variety, and can provide pockets of stagnant water for mosquitoes and midges to breed.

The main basin of Horley Road Wetland has had weeds removed chemically and manually over the past few years under different grant projects. This has increased biodiversity and reduced mosquito and midge breeding. The adjacent road runoff basin and drainage system (basin 1) receives run-off water directly from Roe Highway and water flows from this wetland into the Horley Road Wetland. This is severely degraded, with sedimentation and heavily infested with weeds.

Through funding from the Australian Government's Community Environment Program we were able to secure funds to rehabilitate the degraded runoff basin and drainage system to the main wetland by enhancing the hydrology and removing sediment, pollutants and weeds from the runoff basin that receives water from Roe Highway and other drains before it enters the main basin of the Horley Road Wetland.

Thank you to the Gosnells Volunteer Fire Fighters for their contribution and involvement in this project and to the late Karl Karu and his wife Sandy, SERCUL greatly appreciates all of the voluntary consultancy work undertaken to plan this project.

KEY ACHIEVEMENTS

- Removed couch biomass, sediment and pollutants from the runoff basin and removed couch and other weed biomass from the eastern end of the wetland;
- Cleaned and ensured the water flow of the drains from Roe Highway to the first basin and from the basin to the Horley Road Wetland;
- Three alien trees removed from drainage areas and prescribed burning trials of grasses conducted by SERCUL's neighbours, the Gosnells Volunteer Fire Service on an in-kind basis;
- Natural regeneration of *Eleocharis acuta* (inundated area) has occurred and overall wetland hydrological capacity and biodiversity has increased after rehabilitation of the wetland.



Drainage culvert from Roe Highway after earthworks and removal of couch

This project is funded through the Australian Government – Department of Agriculture, Water and Environment Community Environment Program.

1.3 HA
AREA MANAGED

8
VOLUNTEERS

100
VOLUNTEER HOURS

\$5000
VALUE OF VOLUNTEERING



LANDCARE AND RESTORATION

MURDOCH UNIVERSITY - MERG

THREATENED AND ENDANGERED FAUNA HABITAT CONSERVATION

Murdoch University campus' natural areas include approximately 28 ha of Beeliar Regional Park, including two Conservation Category Wetlands, 9 ha of threatened ecological communities and 15 ha of bushland managed as a wildlife corridor. The campus is a well-known refuge for Quendas, Carnaby's black cockatoos, Forest Red-tailed black cockatoos and a high diversity of native flora. In addition, it is an important area for educational purposes as many environmental units and research projects make use of the sites.

This project, coordinated by Jayson Sekhon, builds on existing projects to increase vegetation structure and resilience to key cockatoo and quenda habitat through weed control, revegetation, trail rationalisation and maintenance of artificial Cockatoo nest hollows. The project is split between three sites: Chelodina Reserve, the wildlife corridor and the Murdoch Banksia Woodland. As part of this project, the Project Coordinator works closely with Murdoch University staff and MERG (Murdoch Environmental Restoration Group) members one day per week to assist in the planning, implementation and monitoring of the project.

During this one day a week, a regular weekly field day opportunity has arisen allowing a variety of students and community members to be involved with an ongoing project in a high value area. As this project occurs on a university campus, this educational and community collaboration opportunity has been a high priority in the ongoing management of the site. Despite only starting towards the end of the financial year, during the COVID-19 pandemic, 52.5 volunteer hours have already been recorded. This diverse group of volunteers have been involved with weed control, mapping, monitoring and planning.

Leading into next financial year, around 4500 plants will be installed, woody weeds and other priority weeds will continue to be managed throughout the site and recent revegetation will be cared for and watered over the summer. Towards the middle of 2021, a controlled burn may occur in the Banksia Woodland which will play an important role in shaping the ecology of the site as well as the direction of the project.

This project is funded through the WA State NRM Community Stewardship Program.



Murdoch University's bushland with planting that occurred in 2019

52.5
VOLUNTEER HOURS

\$2535
VALUE OF VOLUNTEERING



LANDCARE AND RESTORATION

BULL CREEK CATCHMENT RESTORATION

The Bull Creek Reserve is some 18 ha in size and contains remnant species of the Bassendean Vegetation complex. The creek flows all year and is lined with flooded gum, paperbark and swamp peppermint. The SCRRP project, coordinated by Dan Friesen and now Cat Williams, has focused on a 7 ha area of the creek where remaining woody weeds have dominated the understorey.

Significant weed control work has continued to clear blackberry, Sydney golden wattle and Japanese Pepper from the floodplain and surrounds of the waterway. As weed work has progressed the cleared areas have been revegetated with local plants, with focus on riparian sedge and rush species. During this financial year over 50 000 plants were installed. This grant fortunately provided for funded labour to complete the bulk of the plant installation, with assistance and involvement from the friends group volunteers. Unfortunately, because of COVID-19 the school was not able to provide the usual contribution from its staff and students however, we look forward to continuing our work with the school in future work at Bull Creek.

This project continues its support and partnership with Friends of Bull Creek Catchment, City of Melville and the Rossmoyne SHS Bushranger Program. The project is funded by Perth NRM Swan Canning River Recovery Program – Stage 2 and the WA State NRM Program.



Friends of Bull Creek Catchment practicing social distancing during COVID-19 restrictions. Photo kindly supplied by the group.

RESTORATION OF BOORAGOON AND BLUE GUM LAKES



Lookout at Booragoon Lake

Booragoon and Blue Gum Lakes are both ecologically and culturally important wetlands which are part of the Beeliar Wetland Chain. This project, coordinated by Russell Walczak and now Jayson Sekhon, was undertaken in close partnership with the City of Melville and the Friends of Booragoon and Blue Gum Lakes (FOBBGL) to revegetate degraded areas of the reserve to help improve biodiversity and enhance the public amenities of the natural areas. Revegetation of the bushland surrounding both sites is set to occur very soon.

The beginning of the financial year saw the installation of 5500 plants by SERCUL volunteers, Woodside Corporate and Wesley College. Weed control during 2019-20 was largely the treatment and removal of 1 ha of dense mats of couch grass, growing in some places to 1 m tall from the degraded western lakebed of Blue Gum Lake. Once the Blue Gum Lake dries over the summer of 2020-21, around 50 000 stems are to be planted to revegetate the lakebed, now clear of couch grass and other weeds. Infill planting throughout other areas is planned for late winter 2020 and early 2021.

This project is funded through the WA State NRM Program.

5500
PLANTS INSTALLED

355
VOLUNTEER HOURS

\$17 750
VALUE OF VOLUNTEERING



LANDCARE AND RESTORATION

HYDROCOTYLE ERADICATION PROGRAM

PROJECT PARTNERS: Perth NRM and the Hydrocotyle Working Group (City of Canning, DBCA, Water Corporation and Wilson Wetlands Action Group (WWAG))

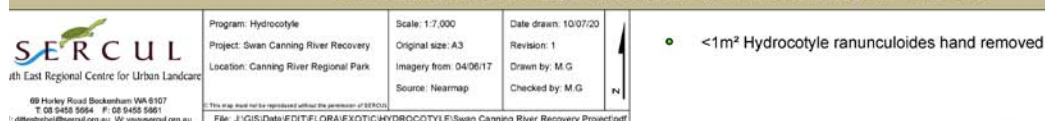
Hydrocotyle ranunculoides has been a major problem in the Canning River and its tributaries since the early 1990's, at times covering the Canning River from bank to bank upstream from the Kent St Weir. This project, coordinated by Matt Grimbly, is a continuation of the first round of the Swan Canning River Recovery Program which greatly reduced Hydrocotyle coverage and abundance.

Hydrocotyle has continued to germinate in the Canning River and Wilson Wetland in the Canning River Regional Park and this financial year has seen 21 hectares of weed management of Hydrocotyle across this area. This project looks to continue, thanks to potential funding from the Swan Canning River Recovery Program – Stage 3 controlling Hydrocotyle until the seedbank is exhausted.

The project is funded by Perth NRM Swan Canning River Recovery Program – Stage 2.



Swan Canning River Recovery Project Hydrocotyle Eradication Program - June 2020



The extent of Hydrocotyle remaining in the Canning River Catchment. Hydrocotyle continues to germinate in these areas – it is necessary to continue Hydrocotyle removal until germination ceases.



LANDCARE AND RESTORATION

AMAZON FROGBIT MANAGEMENT PROGRAM

MANAGEMENT AND EDUCATION



Amazon frogbit plant



Aquatic Weed Management Training

This program educates, researches and manages Amazon frogbit in the Perth region. This three part program sees its final year of funding in this financial year from Perth NRM through the Swan Canning River Recovery Program – Stage 2.

The management consists of controlling existing and new infestations of Amazon frogbit as well as the provision of advice to land managers to establish Amazon frogbit management plans. The education section aims to educate the wider community, primarily through the distribution of information to aquarium and aquatic plant distributors, about the impact of Amazon frogbit on waterways. The research part of the program is reported on the next page.

PROGRAM OUTCOMES

This year has seen the continual posting of informational Adverts on Gumtree, by coordinator Natasha Bowden, outlining the environmental and economic consequences of releasing Frogbit into the waterways and providing information on how to dispose of it correctly. We have had direct interaction with members of the public selling Amazon frogbit on Gumtree and Facebook to advise them of its declared pest status and encourage them to refrain from selling it. We have distributed posters and brochures to City of Canning, CREEC and DBCA Weeds Program and at seven community events attended by SERCUL.

Training of land managers in aquatic weed control and management is also a large part of the program and is coordinated by Amy Krupa. SERCUL has completed and printed 200 Aquatic Weed Management Training Manuals which was launched at the 2020 WA Wetlands Conference. These manuals are distributed to participants who attend the Aquatic Weed Management Training sessions. Due to COVID-19 restrictions this financial year, we have been able to hold only one session in June 2020 with 12 participants. However, three training sessions will be held in the latter half of 2020. The Perth Garden Festival was also cancelled where we were scheduled to have an Amazon Frogbit display with the potential to reach and educate over 1000 people.

SERCUL, coordinated by Dan Friesen, has worked on the ongoing management and removal of Amazon frogbit in Lambertia Creek in Ferndale with the City of Canning and at Little Rush Lake in Yangebup with the City of Cockburn. The goal is extirpation from these areas with continual monitoring and management to occur in the coming year.

A big thank you to our projects partners Department of Biodiversity, Conservation and Attractions; City of Canning; City of Cockburn and The Wetlands Centre Cockburn.

This project is funded by Perth NRM through the Swan Canning River Recovery Program – Stage 2.



MONITORING AND RESEARCH

AMAZON FROGBIT MANAGEMENT PROGRAM

RESEARCH

Amazon frogbit, *Limnobium laevigatum*, is a perennial herbaceous aquatic plant belonging to the family Hydrocharitaceae. This species was imported to Australia as an ornamental aquarium plant and now poses a serious threat to Australian waterways due to its explosive rate of spread. Amazon frogbit was listed as a declared pest in Western Australia in October 2018 and was placed on the Western Australian Organism List. SERCUL commenced a research project on Amazon frogbit to minimise the knowledge gap and improve management of the species.

The aim of this research project, coordinated by Rose Weerasinghe and Andy Owen, is to investigate Amazon frogbit's potential spread to, and establishment in, rivers with different salinity levels and to understand other ecological conditions to maximise control methods.

KEY ACHIEVEMENTS

- Field investigations were conducted to collect in-situ ecological information from locations where Amazon frogbit infestations were reported.
- Five different mesocosms* were set up and experiments begun to collect necessary data in March 2020.

**A mesocosm is a created small ecosystem, bridging the gap between experimental work and field studies. Different mesocosms we created at the SERCUL compound using readily available materials to perform five Amazon frogbit experiments (refer to picture).*

- Amazon frogbit experiments will continue through till September 2020 with a written final report of findings.

This project is funded by Perth NRM through the Swan Canning River Recovery Program – Stage 2.



Landcare Officer, Andy assisting in the experiment set up of Amazon frogbit - plant selecting



Landcare Officer, Andy setting up experimental mesocosms



Landcare Officer, Andy assisting Rose in the experiment set up of Amazon frogbit



MONITORING AND RESEARCH

WATER QUALITY MONITORING

In 2019-20, SERCUL Officers Caitlin Conway, Cecil Ellis, Monica Estrada and Andy Owen, coordinated the Water Quality Monitoring Partnership Programs in three key catchments of the Swan-Canning river system. These projects, which are supported by the Department of Biodiversity, Conservation and Attractions (DBCA), relevant local government authorities, and the Department of Planning, Lands and Heritage/Western Australian Planning Commission (Whiteman Park) have promoted a cooperative approach to water quality monitoring. For each program, SERCUL prepared a sampling and analysis plan (SAP); conducted the sampling, collated and analysed data to produce a report highlighting important findings and providing recommendations. Data generated by these programs was entered into DWER's Water Information (WIN) database for use by DBCA Rivers and Estuaries Branch to implement local Water Quality Improvement Plans (WQIP). SERCUL also coordinates independent water quality monitoring programs for several local governments in areas where water quality is of particular local interest.

Furthermore, SERCUL has provided assistance to DBCA to sample water, sediment and macrophytes for three projects established as part of the Drainage Nutrient Intervention Program (DNIP). DNIP is funded through DBCA Rivers and Estuaries Branch as part of the Healthy Catchments Program, which aims to reduce nutrients entering the Swan and Canning Rivers.



Water sampling at one of the many sites.

KEY ACHIEVEMENTS

Three programs implemented for the DBCA/LGA Water Quality Partnership Programs:

- Bennett Brook catchment (City of Swan, City of Bayswater and Whiteman Park – WAPC/DoPLH);
- City of South Perth catchments (City of South Perth);
- Melville Bull Creek catchment and Melville Lakes (City of Melville).

Six programs implemented for independent water quality monitoring programs for LGAs:

- Cygnia Cove Estate (City of South Perth);
- Lake Claremont (Town of Claremont);
- City of Swan Lakes;
- Bull Creek East (City of Canning), and
- Bannister Creek (City of Canning)
- Palomino Reserve (AGLG)

Assisted DBCA with water (monthly basis), sediment and macrophyte (quarterly basis) monitoring at three DNIP projects: Anvil Way Compensation Basin, Liege Street Wetland and Wharf Street Constructed Wetland.

The Water Quality Program is funded by the Cities of South Perth, Bayswater, Swan and Melville, the Town of Claremont, Whiteman Park (WAPC), Armadale Gosnells Landcare Group (AGLG) and Department of Biodiversity, Conservation and Attractions - Rivers and Estuaries Branch (DBCA).

12
PROJECT SITES

137
SAMPLE SITES

36
SAMPLING EVENTS

570
WATER SAMPLES
COLLECTED

35
SEDIMENT SAMPLES
COLLECTED



MONITORING AND RESEARCH

HORLEY ROAD WETLAND

BIOMONITORING PROJECT

Systematic bio-monitoring at Horley Road Wetland, coordinated by Dr Rose Weerasinghe, has been conducted by SERCUL and volunteers on an in-kind basis since 2016. The Horley Road Wetland was selected for the study due to its ecological and sociological value within the Yule Brook system. The information obtained from this project can be used to assist wetland managers with restoration activities, and for managing wetland mosquito populations for human health and environmental purposes.

The main objectives of this project is to track and record ecological changes that may be occurring in the wetland as a result of wetland rehabilitation, collect ecological data that will contribute to a better understanding of mosquito breeding in relation to other ecological factors in this system and similar systems and to provide an opportunity for University, TAFE students, and community volunteers to participate and learn skills relevant to wetland rehabilitation, ecological monitoring, and analysis.

KEY ACHIEVEMENTS

- Continued post-rehabilitation monitoring of mosquito larval counts, other macroinvertebrate populations, birds, frogs, and water quality physicochemical parameters in the wetland;
- Bio-monitoring to understand the rehabilitation progress is still continuing; however data collected thus far shows an increase in densities of native fauna and flora since we completed the two rounds of couch removal and experimental burn trials;
- Murdoch University, North Metropolitan TAFE and Central TAFE students joined for bio-monitoring and learned ecological monitoring and macroinvertebrate identification skills;
- Provided in situ learning opportunities for school students to embrace wetland education and the wetland provided macroinvertebrates for PAP program school incursions and excursions.

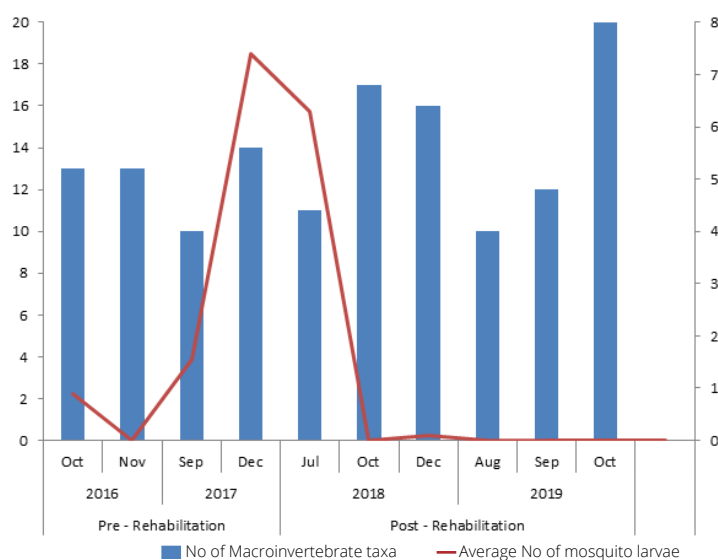
37
VOLUNTEERS

295
VOLUNTEER HOURS

\$14 750
VALUE OF VOLUNTEERING

SUMMARY

- Monitoring has identified the importance of the appropriate management of aquatic weeds in wetlands in ensuring environmental and human health risks are minimised. Ongoing monitoring is required to determine the impact of rehabilitation efforts on the ecology and biodiversity values of the wetland.
- From a conservation perspective, the Wetland provides a safe breeding ground for frogs, habitats for other diverse wildlife and acts as a comparative model wetland to understand typical macroinvertebrate composition in temporary wetlands in the Perth Region.



Macroinvertebrate taxa richness and mosquito breeding information at the Horley Road Wetland before and after rehabilitation



MONITORING AND RESEARCH

ADENIA RESEARCH PROJECT

HABITAT REHABILITATION AND SALTMARSH MOSQUITO MANAGEMENT IN THE CANNING RIVER REGIONAL PARK TIDAL FLATS

The Canning River Regional Park (CRRP) contains one of the few remaining areas of estuarine saltmarsh vegetation in the Swan-Canning River system. The project site is a temperate saltmarsh located in the CRRP, with estuarine saltmarsh habitats recognised nationally as a Threatened Ecological Community (TEC) since 2013 and ranked as vulnerable. The saltmarsh vegetation complex is also listed as a priority III ecological community in Western Australia.

This project, coordinated by Dr Rose Weerasinghe and Caitlin Conway, aims to enhance the quality of this TEC and thereby strengthen the ecological linkages it is part of, and to educate the local community about the importance of saltmarshes and saltmarsh rehabilitation techniques.

KEY ACHIEVEMENTS

- Controlled aggressive weedy salt water couch, other monocot and dicot weeds over 3.6 ha.
- Collected baseline ecological data for the Adenia Saltmarsh Threatened Ecological Community;
- Investigated pre and post-restoration;
- Prepared pre and post rehabilitation vegetation maps;
- Propagated 9126 individual plants from 5 different provenance halophyte species at the APACE nursery;
- Revegetated 0.5 ha of degraded area;
- Direct planting trial conducted using three different halophyte species, in total 1250 cuttings were planted;
- Provided opportunity for NRM officers, community volunteers, and University, TAFE and school students to participate in monitoring, rehabilitation activities and learn about saltmarsh ecology, restoration and conservation.
- Conducted a collaborative field workshop with APACE WA on saltmarsh vegetation rehabilitation and held five Educational Community Awareness field-events.
- Had a 'Saltmarshes are Blue Carbon Sinks' educational display at the City of Canning Changing Your World Fair in March 2020, which was seen by around 200 people.

SUMMARY OF THE PROJECT

- The Adenia lagoon and accompanying saltmarsh sites contribute a great amount of ecological significance to not only the CRRP, but also the Swan Canning River Catchment.
- Identified that the Adenia saltmarsh is affected by a combination of threats: access roads, invasive weeds, anthropogenic activities, chemical mosquito control, altered hydrological regimes, and stormwater influence.
- Over the project's period, monitoring was conducted to help bridge gaps in knowledge.
- However, this investigation was governed by a limited scope and a host of other limitations, including but not limited to: time, resources, budget, anthropogenic/drainage disturbances, and weather.
- For the successful management of saltmarsh TEC communities, relevant management parties should include plans for weed management, native vegetation management, provenance species revegetation, hydrology management, community education and ongoing monitoring.

9126
PLANTS INSTALLED

100
VOLUNTEERS

687.5
VOLUNTEER HOURS

\$28 525
VALUE OF VOLUNTEERING

Project partners include Curtin University, Department Biodiversity Conservation and Attractions (DBCA) and City of Canning. We appreciate the Curtin University student Anthony Miaris (supervised by Dr Ranjan Sarukkalige) for contributing monitoring data to our project as part of his final year Civil Engineering Undergraduate project.

This project funded by National Landcare Program – Environment Small Grants.



ENVIRONMENTAL SERVICES

Environmental Services, managed by Matt Grimbly are undertaken on a fee for service basis. The specific intent of this delivery model is to generate income to support community groups and capacity in our region. It is recognised that in an ever tightening and diminishing funding environment there is limited external financial support provided to this area. Environmental Services undertaken by SERCUL are in the areas of Monitoring and Research, Education and Promotion and Landcare and Restoration. The majority of proceeds that are generated by the Environmental Services Unit come from Landcare and Restoration.

This financial year has seen SERCUL deliver many weed management, bushland maintenance, revegetation and erosion control projects for a wide range of clients. Work has included the reduction of weeds in sensitive remnant bushland, the successful control of serious aquatic weeds such as Amazon frogbit, revegetation of river foreshore and bushland areas, manual removal of large infestations of woody weeds and erosion control on the river foreshore.

CLIENTS INCLUDED

- Armadale Gosnells Landcare Group
- Bannister Creek Catchment Group
- City of Armadale
- City of Canning
- City of Cockburn
- City of Fremantle
- City of Gosnells
- City of Melville
- City of Nedlands
- City of Perth
- Cottesloe Golf Club
- Department of Biodiversity, Conservation and Attractions
- Department of Primary Industries and Regional Development
- Friends of Clontarf Hill
- Friends of the Spectacles
- Great Northern Connect
- Murdoch University Environmental Restoration Group
- SUEZ
- Trillion Trees
- Water Corporation
- Whiteman Park



Environmental Services Manager, Matt Grimbly, supervising the planting



The fauna bridge planted out as part of the project

NORTHLINK PROJECT

CLIENT: Great Northern Connect

The NorthLink project was by far the biggest tender that our Environmental Services Unit has implemented to date. This project occurred from May 2019 - August 2019 on the extension of Tonkin Highway between the Promenade and the fauna bridge in Ellenbrook.

The project involved planting of 500 mature trees and seeding 100 ha of road reserve, using our existing Environmental Services staff, along a 6 km stretch of the new Highway and in the interchange areas. Over 500 000 tube stock were also planted by 23 Planting Officers who were employed solely for this three month project.

The project also involved the planting of WA's first fauna bridge. The bridge connects bushland on either side of the highway known to house abundant wildlife including kangaroos and emus. At 12 metres wide, it provides a natural route that encourages and allows animals of all kinds to cross the freeway safely.

NEW PROJECTS FOR 2020-21

WA STATE NRM COMMUNITY STEWARDSHIP PROJECTS



Environmental Services Manager, Matt Grimby and Luke McMillan, Ecologist from Perth NRM with a mature boneseed plant

The next financial year looks to be a busy one for the SERCUL community landcare team. Along with a continuation of many existing projects we look forward to commencing a new WA State NRM funded grant with a strong emphasis on wetland habitats and water quality improvement. This project will run over two years and includes the following sub-projects:

- Adenia Saltmarsh TEC
- Bickley Outdoor Recreation Camp Trail
- Boneseed Eradication Program through Perth Hills
- Canning River Regional Park (post fire recovery near Bacon Street)
- Horley-Beckenham WSUD Basin
- Jandakot Regional Park Restoration
- Robert Weir WSUD Basin (with City of Melville and Water Corporation)
- Yule Brook, Beckenham

SWAN CANNING RIVER RECOVERY PROGRAM - STAGE 3

Through Perth NRM the forthcoming Swan-Canning River Recovery Program – Stage 3 will provide funding for community led projects and strategic projects over a three-year period. SERCUL will be working closely with Perth NRM, community and Local and State Government partners to identify and select priority sites and works for inclusion into the program.

Under potential consideration are sites including Hester Park in Langford, Canning River Regional Park, Adenia Lagoon and Riverton Foreshore. There is also scope for continuing with an aquatic weed mapping and control program. In coming months these and other options will be tabled and finalised before on-ground work commences towards the end of 2020.



Hester Park - a potential site for Stage 3 funding. Hester Park sits on the south shore of the Canning River opposite the Beckenham Open Space at SERCUL. This site is heavily infested with woody weeds and compromised understory.



ACKNOWLEDGEMENTS AND THANK YOU

The achievements of the South East Regional Centre for Urban Landcare's project delivery are due to the financial and in-kind contributions from Federal, State and Local Governments and income generated by SERCUL's Environmental Services team through its contract work. Due to COVID-19 it has been a challenging end to the 2019–20 financial year but we sincerely thank all our partners and the local community across the South Region for their continuing support which has allowed us to achieve the outcomes highlighted in this report.

We greatly appreciate the opportunity to work alongside our project and industry partners, government agencies, local government, Aboriginal organisations, community groups and volunteers in the delivery of natural resource management and landcare in the South region. We share our achievements with this positive and supporting network.

As we commence the 2020–21 financial year, we look forward to continuing to work together to achieve many more positive environmental outcomes for the South region.



SERCUL

FINANCIAL REPORT

for the year ended 30 June 2020



2020

Contents

Statement by the Executive Committee	1
Auditor's Independence Declaration	2
Independent Auditor's Report.....	3
Statement of Profit or Loss and Other Comprehensive Income.....	6
Statement of Financial Position	7
Statement of Changes in Equity.....	8
Statement of Cash Flows	9
Notes to the Financial Statements	10

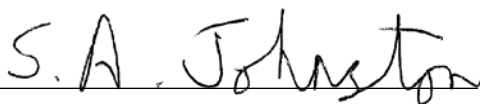
Statement by the Executive Committee

The Executive Committee has determined that South East Regional Centre for Urban Landcare Inc. (the 'Association') is not a reporting entity and that this special purpose financial report should be prepared in accordance with the accounting policies outlined in Notes 1 & 2 to the financial statements.

In the opinion of the Executive Committee, the financial statements and notes, as set out on pages 6 to 18 are in accordance with the Australian Charities and Not-for-Profits Commission Act 2012, Associations Incorporation Act 2015 and:

1. Comply with the Australian Accounting Standards applicable to South East Regional Centre for Urban Landcare Inc.
2. Gives a true and fair view of the financial position of the Association as at 30 June 2020 and its performance for the year ended on that date in accordance with the accounting policies described in Notes 1 & 2; and
3. At the date of this statement, there are reasonable grounds to believe that the Association will be able to pay its debts as and when they fall due and payable.

This statement is made in accordance with the Australian Charities and Not-for-profits Commission Regulation 2013 and is signed for and on behalf of the Executive Committee by:



Stephen Johnston
Deputy Chairperson
Dated 21st September 2020



Patricia Hart
Chairperson
Dated 21st September 2020

Suite 4, 1st Floor
63 Shepperton Road
Victoria Park
Western Australia 6100

Telephone: (08) 9362 5855

htg@htgpartners.com.au
www.htgpartners.com.au

ABN: 78 607 011 001

PO Box 199
Victoria Park
Western Australia 6979

AUDITOR'S INDEPENDENCE DECLARATION

TO THE MEMBERS OF SOUTH EAST REGIONAL CENTRE FOR URBAN LANDCARE INC

I declare that, to the best of my knowledge and belief, during the year ended 30 June 2020 there has been:

- (i) no contraventions of the independence requirements in relation to the audit; and
- (ii) no contraventions of any applicable code of professional conduct in relation to the audit.

HTG PARTNERS



PARTNERS

Timothy Turner
BBus (Acc), FCPA, CTA
Registered Company Auditor

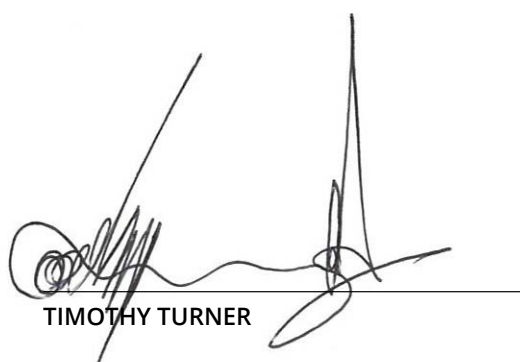
Vick Gelevitis
BBus (Acc), FCPA, CTA

Darryl Rodrigues
BSc, BBus (Acc), CPA

HTG Partners is a CPA Practice



Liability Limited by a scheme
approved under Professional
Standards Legislation



TIMOTHY TURNER

Dated this 21st day of September 2020

Suite 4, 1st Floor
63 Shepperton Road
Victoria Park
Western Australia 6100

Telephone: (08) 9362 5855

htg@htgpartners.com.au
www.htgpartners.com.au

ABN: 78 607 011 001

PO Box 199
Victoria Park
Western Australia 6979

INDEPENDENT AUDITOR'S REPORT
TO THE MEMBERS OF SOUTH EAST REGIONAL CENTRE
FOR URBAN LANDCARE INC

Report on the Audit of the Financial Report

Opinion

We have audited the accompanying financial report being a special purpose financial report of South East Regional Centre for Urban Landcare Inc (the 'Association'), which comprises the statement of financial position as at 30 June 2020, the statement of profit or loss and other comprehensive income, statement of changes in equity and statement of cash flows for the year then ended, notes comprising a summary of significant accounting policies and other explanatory information, and the statement by the Association Committee.

In our opinion, the accompanying financial report of South East Regional Centre for Urban Landcare Inc has been prepared in accordance with Division 60 of the Australian Charities and Not-for-profits Commission Act 2012 and the Associations Incorporation Act 2015, including:

- (a) giving a true and fair view of the Association's financial position as at 30 June 2020 and of its financial performance and its cash flows for the year then ended; and
- (b) complying with Australian Accounting Standards to the extent described in Notes 1 & 2 and Division 60 of the Australian Charities and Not-for-profits Commission Regulations 2013.

Basis for Opinion

We conducted our audit in accordance with Australian Auditing Standards. Our responsibilities under those standards are further described in the Auditor's Responsibilities for the Audit of the Financial Report section of our report. We are independent of the Association in accordance with the auditor independence requirements of the Australian Charities and Not-for-profits Commission Act 2012 and the ethical requirements of the Accounting Professional and Ethical Standards Board's APES 110 Code of Ethics for Professional Accountants (the Code) that are relevant to our audit of the financial report in Australia. We have also fulfilled our other ethical responsibilities in accordance with the Code.

We believe that the audit evidence we have obtained is sufficient and appropriate to provide a basis for our opinion.



PARTNERS

Timothy Turner
BBus (Acc), FCPA, CTA
Registered Company Auditor

Vick Gelevitis
BBus (Acc), FCPA, CTA

Darryl Rodrigues
BSc, BBus (Acc), CPA

HTG Partners is a CPA Practice



Liability Limited by a scheme
approved under Professional
Standards Legislation

INDEPENDENT AUDITOR'S REPORT

TO THE MEMBERS OF SOUTH EAST REGIONAL CENTRE FOR URBAN LANDCARE INC

Report on the Audit of the Financial Report

Emphasis of Matter - Basis of Accounting

We draw attention to Note 1 to the financial report, which describes the basis of accounting. The financial report has been prepared for the purpose of fulfilling the Association's financial reporting responsibilities under the Australian Charities and Not-for-profits Commission Act 2012 and the Associations Incorporation Act 2015. As a result, the financial report may not be suitable for another purpose. Our opinion is not modified in respect of this matter.

Responsibilities of the Executive Committee for the Financial Report

The Executive Committee is responsible for the preparation of the financial report that gives a true and fair view and has determined that the basis of preparation described in Notes 1 & 2 to the financial report is appropriate to meet the financial reporting requirements of the Australian Charities and Not-for-profits Commission Act 2012, Associations Incorporation Act 2015, the Rules of Association and is appropriate to meet the needs of the members. The Committee of Management's responsibility also includes such internal control as management determines is necessary to enable the preparation of a financial report that gives a true and fair view and is free from material misstatement, whether due to fraud or error.

In preparing the financial report, the Executive Committee is responsible for assessing the Association's ability to continue as a going concern, disclosing, as applicable, matters relating to going concern and using the going concern basis of accounting unless the Committee either intend to liquidate the Association or to cease operations, or has no realistic alternative but to do so.

The Executive Committee is responsible for overseeing the Association's financial reporting process.

Auditor's Responsibilities for the Audit of the Financial Report

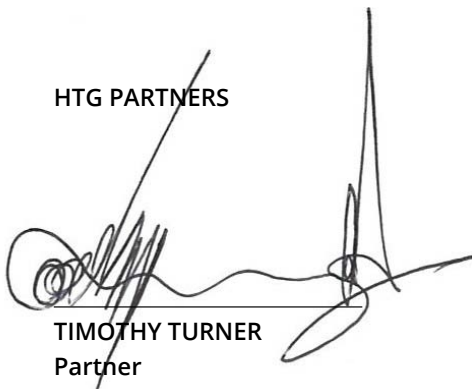
Our objectives are to obtain reasonable assurance about whether the financial report as a whole is free from material misstatement, whether due to fraud or error, and to issue an auditor's report that includes our opinion. Reasonable assurance is a high level of assurance, but is not a guarantee that an audit conducted in accordance with the Australian Auditing Standards will always detect a material misstatement when it exists. Misstatements can arise from fraud or error and are considered material if, individually or in the aggregate, they could reasonably be expected to influence the economic decisions of users taken on the basis of this financial report.

INDEPENDENT AUDITOR'S REPORT
TO THE MEMBERS OF SOUTH EAST REGIONAL CENTRE
FOR URBAN LANDCARE INC

Auditor's Responsibilities for the Audit of the Financial Report (*continued*)

A further description of our responsibilities for the audit of the financial report is located at the Auditing and Assurance Standards Board website at: <http://www.auasb.gov.au/Home.aspx>. This description forms part of our auditor's report.

HTG PARTNERS



TIMOTHY TURNER
Partner

Signed at Perth on the 21st day of September 2020

Statement of Profit or Loss and Other Comprehensive Income *for the year ended 30 June 2020*

	Note	2020 \$	2019 \$
Revenue	3	2,608,913	1,974,543
Other income	3	153,553	83,086
Direct costs	4	(1,783,384)	(1,450,798)
Administration and general expenses	5	(642,118)	(543,297)
Property and communications expenses		(17,009)	(20,203)
Governance expenses		(17,163)	(18,634)
Interest expenses		-	-
Loss on sale of fixed asset		-	-
Other expenses		(2,391)	(2,986)
Net surplus/(loss) for the year before income tax		300,401	21,711
Income Tax Expense	2(d)	0	0
Net surplus /(loss) for the year		300,401	21,711
Other comprehensive income		0	0
Total profit or loss and other comprehensive income for the year		300,401	21,711

The accompanying notes form part of these financial statements

Statement of Financial Position *for the year ended 30 June 2020*

	Note	2020 \$	2019 \$
ASSETS			
CURRENT ASSETS			
Cash and cash equivalents	6	1,980,430	1,906,851
Trade receivables	7	74,701	202,708
Other assets	8	170,907	84,883
TOTAL CURRENT ASSETS		2,226,038	2,194,442
NON-CURRENT ASSETS			
Property, Plant and equipment	9	171,055	139,205
TOTAL NON-CURRENT ASSETS		171,055	139,205
TOTAL ASSETS		2,397,093	2,333,647
LIABILITIES			
CURRENT LIABILITIES			
Trade and other payables	10	245,073	267,304
Provisions	11	161,704	157,690
Other liabilities	12	974,653	1,185,222
TOTAL CURRENT LIABILITIES		1,381,430	1,610,216
NON - CURRENT LIABILITIES			
Provisions	11	3,992	12,161
TOTAL NON-CURRENT LIABILITIES		3,992	12,161
TOTAL LIABILITIES		1,385,422	1,622,377
NET ASSETS		1,011,671	711,270
EQUITY			
Retained earnings		1,011,671	711,270
TOTAL EQUITY		1,011,671	711,270

The accompanying notes form part of these financial statements

Statement of Changes in Equity
for the year ended 30 June 2020

2020

	Retained earnings	Total
	\$	\$
Balance at 1 July 2019	711,270	711,270
Surplus for the year	300,401	300,401
Balance at 30 June 2020	1,011,671	1,011,671

2019

	Retained earnings	Total
	\$	\$
Balance at 1 July 2018	689,559	689,559
Surplus for the year	21,711	21,711
Balance at 30 June 2019	711,270	711,270

The accompanying notes form part of these financial statements

Statement of Cash Flows *for the year ended 30 June 2020*

	Note	2020 \$	2019 \$
CASH FLOWS FROM OPERATING ACTIVITIES:			
Receipts from customers, government and grants		2,526,774	2,443,547
Payments to suppliers and employees		(2,429,903)	(1,843,494)
Other receipts		19,239	19,488
Interest received		30,607	29,557
Net cash provided by / (used in) operating activities	13(a)	146,717	649,098
CASH FLOWS FROM INVESTING ACTIVITIES:			
Purchase of property, plant and equipment		(83,138)	(131,738)
Proceeds from disposal of property, plant and equipment		10,000	54,931
Net cash (used in) / provided by investing activities		(73,138)	(76,807)
CASH FLOWS FROM FINANCING ACTIVITIES			
		-	-
Net increase / (decrease) in cash and cash equivalents held		73,579	572,291
Cash and cash equivalents at beginning of year		1,906,851	1,334,560
Cash and cash equivalents at end of financial year	6	1,980,430	1,906,851

The accompanying notes form part of these financial statements

Notes to the Financial Statements *For the Year Ended 30 June 2020*

1. Basis of Preparation

The financial statements cover South East Regional Centre for Urban Landcare Inc (the 'Association') as an individual entity. South East Regional Centre for Urban Landcare Inc is an association incorporated in Western Australia and operating pursuant to the Associations Incorporation Act 2015.

The Executive Committee has prepared the financial statements on the basis that the Association is a non-reporting entity because there are no users who are dependent on its general purpose financial statements. These financial statements are therefore special purpose financial statements that have been prepared in order to meet the financial reporting requirements of the Australian Charities and Not-for-profits Commission Act 2012 and the Associations Incorporation Act 2015. The Association is a not-for-profit entity for financial reporting purposes under Australian Accounting Standards.

The financial statements for the year ended 30 June 2020 were approved and authorised for issue by the Executive Committee on the date their report on Page 1 was signed.

The financial statements have been prepared in accordance with the mandatory Australian Accounting Standards applicable to large entities under the Australian Charities and Not-for-Profits Commission Act 2012. The Association has complied with all the recognition and measurement of Australian Accounting Standards.

The financial statements, except for the cash flow information, have been prepared on an accruals basis and are based on historic costs and do not take into account changing money values or, except where specifically stated, current valuations of non-current assets.

The following significant accounting policies, which are consistent with the previous period unless otherwise stated, have been adopted in the preparation of these financial statements. The amounts presented in the financial statements have been rounded to the nearest dollar.

2. Summary of Significant Accounting Policies

(a) Cash and cash equivalents

Cash and cash equivalents include cash on hand, deposits held at call with banks, other short-term highly liquid investments with original maturities of three months or less.

(b) Plant and equipment (PE)

Each class of plant and equipment is carried at cost less, where applicable, any accumulated depreciation and impairment loss.

The depreciable amount of all PE is depreciated on a straight line basis over the useful lives of the assets to the Association commencing from the time the asset is held ready for use.

The depreciation rates used are as follows:

- Computers: 40%
- Motor Vehicles: 25%
- Office Equipment: 10% - 40%
- Plant and Equipment: 20% - 40%
- Leasehold Improvement: over the remaining life of the lease

Notes to the Financial Statements *For the Year Ended 30 June 2020*

(c) Financial Liabilities – including trade and other payables

Trade and other payables represent the liabilities outstanding at the end of the reporting period for goods and services received by the Association during the reporting period which remain unpaid. The balance is recognised as a current liability with the amounts normally paid within 30 days of recognition of the liability.

A financial liability is derecognised when it is extinguished, discharged, cancelled or expires.

(d) Income Tax

No provision for income tax has been recognised as the Association is exempt from income tax under section 50-5 of the Income Tax Assessment Act 1997 as amended.

(e) Employee benefits

Short term employee benefits are benefits that are expected to be settled wholly within 12 months after the employees render the related service and are measured at the undiscounted amounts expected to be paid when the liabilities are settled. Long term employee benefits are benefits not expected to be settled wholly within 12 months after the end of the period in which the employees render the related service. They are measured at the expected future payments to be made to employees based up the current rates of remuneration. The Association presents employee obligations as current when there is no right to defer settlement for 12 months irrespective of when settlement is expected.

Contributions are made to employee nominated superannuation funds and are charged as expenses when incurred. The Association has no other legal obligations to provide other benefits to employees on retirement.

(f) Leases

Lease payments for operating leases, where substantially all of the risks and benefits remain with the lessor, are charged as expenses on a straight-line basis over the life of the lease term.

(g) Trade and other receivables

Trade receivables are initially recognised at the transaction price. After initial recognition, these are measured at amortised cost using the effective interest method. Discounting is omitted where the effect of discounting is immaterial. The Association assesses impairment of trade receivables at the amount equal to the expected lifetime credit losses based upon historical experience, external indicators and forward looking information.

Notes to the Financial Statements For the Year Ended 30 June 2020

2. Summary of Significant Accounting Policies (continued)

(h) Revenue and other income

In the current year

Revenue is recognised using a five steps process:

- identify the contract;
- identify the performance obligations;
- determine the transaction price;
- allocate the transaction price to the performance obligations; and
- recognise revenue when (or as) the performance obligations are satisfied.

In prior years

Revenue is measured at the fair value of the consideration received or receivable.

Revenue is measured by reference to the fair value of consideration received or receivable for goods supplied and services provided, excluding taxes, rebates, and trade discounts.

Revenue is recognised when the amount of revenue can be measured reliably, collection is probable, the costs incurred or to be incurred can be measured reliably, and when the criteria for each of the Association's different activities have been met. Details of the activity-specific recognition criteria are described below.

Service Provision

Revenue from the rendering of a service is recognised upon the delivery of the service to the customers.

Government Grants

A number of the Association's programs are supported by grants received from government.

The conditions are attached to a grant which must be satisfied before the association is eligible to receive the contribution, recognition of the grant as revenue is deferred until those conditions are satisfied.

Where a grant is received on the condition that specified services are delivered to the grantor, this is considered a reciprocal transaction. Revenue is recognised as services are performed and at year end a liability is recognised until the service is delivered.

Revenue from a non-reciprocal grant that is not subject to conditions is recognised when the Association obtains control of the funds, economic benefits are probable, and the amount can be measured reliably. Where a grant may be required to be repaid if certain conditions are not satisfied, a liability is recognised at year end to the extent that conditions remain unsatisfied.

Donations and Bequests

Donations collected are recognised as revenue when the Association gains control, economic benefits are probable and the amount of the donation can be measured reliably.

Bequests are recognised when the legacy is received.

Interest Income

Interest is recognised using the effective interest method, which for floating rate financial assets is the rate inherent in the instrument.

All revenue is stated net of the amount of goods and services tax (GST).

Notes to the Financial Statements For the Year Ended 30 June 2020

(i) Goods and services tax (GST)

Revenue, expenses and assets are recognised net of the amount of goods and services tax (GST), except where the amount of GST incurred is not recoverable from the Australian Taxation Office (ATO).

Trade receivables and trade payables in the statement of financial position are stated inclusive of the amount of GST receivable or payable. Other current assets and other current liabilities are stated exclusive of GST.

The net amount of GST recoverable from, or payable to, the ATO is included with other receivables or payables in the statement of financial position.

Cash flows in the statement of cash flows are included on a gross basis. The GST components of cash flows arising from investing and financing activities which are recoverable from, or payable to, the ATO are presented as operating cash flows included in receipts from customers or payments to suppliers.

(j) New standards adopted as at 1 July 2019

- AASB 15 Revenue
- AASB 16 Leases
- AASB 1058 Income for Not-for-Profit Entities
- AASB 2016-8 Amendments to Australian Standards – Australian Implementation Guidance for Not-for-Profit Entities
- AASB 2018-8 Amendments to Australian Accounting Standards -Right-of-Use Assets of Not-for-Profit Entities
- AASB 2019-4 Amendments to Australian Accounting Standards – Disclosure in Special Purpose Financial Statements of Not-for-Profit Private Sector Entities on Compliance with recognition and measurement requirements
- AASB 2019-6 Amendments to Australian Accounting Standards – Research Grants Not-for-Profit Entities
- AASB 2019-8 Amendments to Australian Accounting Standards – Class of Right of – Use Assets arising under Concessionary Leases

(k) Comparative figures

Comparative figures have been adjusted to conform to changes in presentation for the current financial year where required by Australian Accounting Standards or as a result of a change in accounting policy.

(l) New accounting standards for application in future periods

The Association has not applied the revised Australian Accounting Standards, interpretations and amendments that have been issued by are not yet effective.

Notes to the Financial Statements

For the Year Ended 30 June 2020

2. Summary of Significant Accounting Policies (continued)

(m) Significant management judgement in applying accounting policies

When preparing the financial statements, management undertakes a number of judgements, estimates and assumptions about the recognition and measurement of assets, liabilities, income and expenses. Information about estimates and assumptions that have the most significant effect on recognition and measurement of assets, liabilities, income and expenses is provided below. Actual results may be substantially different.

Useful lives of depreciable assets

Management reviews its estimate of the useful lives of depreciable assets at each reporting date, based on the expected utility of the assets. Uncertainties in these estimates relate to technical obsolescence that may change the utility of certain equipment.

Long service leave

The liability for long service leave is recognised and measured at the estimated cash flows to be made in respect of all employees at the reporting date. In determining the estimated cashflows, we have used current pay rates.

Notes to the Financial Statements

For the Year Ended 30 June 2020

3. Revenue and Other Income

	2020 \$	2019 \$
Revenue from contracts with customers		
Grants	606,652	412,067
Partners	924,007	849,101
Services delivery landcare	1,008,822	685,169
Services delivery others	69,432	28,205
Total Revenue	2,608,913	1,974,542
Other income from ordinary activities		
Donations	0	0
Interest revenue	30,607	29,557
Gain on sale or disposal PPE	10,000	34,041
Correction of income	0	(3,112)
Other income	12,946	22,601
Non-operating grant – COVID-19 cashflow boost (AASB 1058 Revenue)	100,000	0
Total other income	153,553	83,087

4. Direct Costs

Landcare P/G delivery	666,616	460,517
Landcare services delivery	526,612	421,303
Vehicle Operations	54,771	58,566
Education delivery	195,922	202,713
Monitoring & research delivery	145,437	101,642
Community capacity delivery	194,026	206,057
Total Direct Costs	1,783,384	1,450,798

5. Surplus / (deficit) includes the following specific expenses

Depreciation	51,289	23,040
	51,289	23,040

6. Cash and Cash Equivalents

Cash on hand	232	269
Cash at bank	478,063	577,635
Short-term investments	1,502,135	1,328,947
	1,980,430	1,906,851

Notes to the Financial Statements

For the Year Ended 30 June 2020

	2020 \$	2019 \$
7. Trade Receivables		
CURRENT		
Trade receivables	74,701	202,708
Less provision for impairment	0	0
	74,701	202,708
8. Other Assets		
CURRENT		
Accrued income	93,707	424
Cost to fulfil a contract	31,064	35,645
Prepaid insurance/rego expenses	46,080	48,514
Deferred expense - WWAG	56	300
	170,907	84,883
9. Property, Plant and equipment		
Computer Equipment		
At cost	7,520	7,520
Accumulated depreciation	(7,520)	(7,520)
Total computer equipment	0	0
Office equipment		
At cost	7,500	7,500
Accumulated depreciation	(7,500)	(7,500)
Total office equipment	0	0
Plant and equipment		
At cost	96,712	77,537
Accumulated depreciation	(62,921)	(59,010)
Total plant and equipment	33,791	18,527
Motor vehicles		
At cost	210,271	168,924
Accumulated depreciation	(116,004)	(105,376)
Total motor vehicles	94,267	63,548
Leasehold Improvement		
At cost	68,671	59,690
Accumulated depreciation	(25,674)	(2,560)
Total leasehold improvement	42,997	57,130
	171,055	139,205

Notes to the Financial Statements

For the Year Ended 30 June 2020

	2020 \$	2019 \$
10. Trade and Other Payables		
CURRENT		
Trade payables	83,571	7,348
Accrued expenses	21,858	75,333
Credit cards	2,738	4,473
PAYG withholdings payable	24,124	20,228
Superannuation payable	34,486	31,853
Parental leave funds	2,370	0
GST/BAS payable	37,534	88,847
Accrued wages	38,392	39,222
	245,073	267,304
11. Provisions		
CURRENT		
Provision for annual leave	79,823	86,556
Provision for personal leave	10,347	7,000
Provision for LSL	71,534	64,134
	161,704	157,690
NON - CURRENT		
Provision for LSL	3,992	12,161
	3,992	12,161
12. Other Liabilities		
CURRENT		
Contract liabilities unearned revenue	27,396	28,532
Contract liabilities unearned grants received	945,758	1,155,345
Donation liability (Public Environment Fund)	1,499	1,345
	974,653	1,185,222

Notes to the Financial Statements For the Year Ended 30 June 2020

13. Cash Flow Information

(a) Reconciliation of result for the year to cashflows from operating activities

	2020 \$	2019 \$
Surplus / (deficit) for the year		
Cash flows/ (deficit) excluded from surplus attributable to operating activities	300,401	21,710
Non-cash flows in surplus:		
- depreciation	51,289	23,040
- (profit) / loss on sale of fixed assets	(10,000)	(34,041)
Changes in assets and liabilities:		
- (increase)/decrease in trade and other receivables	128,007	53,189
- (increase)/decrease in other assets	(86,024)	16,915
- increase/(decrease) in trade and other payables	(22,232)	130,836
- increase/(decrease) in provision for employee benefits	(4,155)	21,210
- increase/(decrease) in other liabilities	(210,569)	416,239
Cashflows from operations	<u>146,717</u>	<u>649,098</u>

(b) Non-cash financing and investing activities

Donations in-kind	-	-
	<u>-</u>	<u>-</u>

14. Events Occurring After the Reporting Date

No matters or circumstances have arisen since the end of the financial year which significantly affected or may significantly affect the operations of the Association, the results of those operations, or the state of affairs of the Association in future financial years.

15. Association Details

The principal place of business is 1 Horley Road, Beckenham, WA 6107.

16. Economic dependence

The Association is dependent on various government agencies for the majority of its revenue used to operate the business. At the date of this report the Executive Committee has no reason to believe the agencies will not continue to support the Association.



South East Regional Centre for Urban Landcare

1 Horley Road, Beckenham WA 6107
Ph: (08) 9458 5664
www.sercul.org.au

