

SERCUL

ANNUAL REPORT

2012

*Community
improving the
health of our land
and waterways*



South East Regional Centre for Urban Landcare



Sailing on the River



Boardwalk at Beckenham Open Space



Slender Tree Frog

CONTENTS

Feedback	4
Achievements and Highlights of 2011–2012	5
From the Chair – Pat Hart	6
From the CEO – Julie Robert	7
SERCUL Staff and Committee 2011–2012	8
SERCUL Staff and Committee Structure	9
Strategic Direction	9
SERCUL Constitution	10
The NRM Organisational Structure in Perth	11
SERCUL NRM Program Areas	12
Community Support and Education	13–17
Landcare Programs	18–33
Monitoring and Research	34–37
Auditor's Report	38
Financial Summary	39
Financial Report	40–43
Statement by Management Committee	44
New Projects	45
Thank You	46
Acknowledgments	47

Wood Duck Preening



Macroinvertebrate Sampling



Great Gardens Permaculture Workshop



SERCUL Staff Training





Red Tailed Black Cockatoo in Flight

FEEDBACK DURING 2011–2012

"I am very encouraged by what has been achieved by SERCUL in the past decade – and that's just on the property itself. I have not been able to get involved in any of the many other useful projects that SERCUL has run in various other parts of the region over the years. It is so refreshing to find something positive being done, and succeeding, when so many people in our society these days seem to be out to destroy worthwhile things, instead of trying to create them."

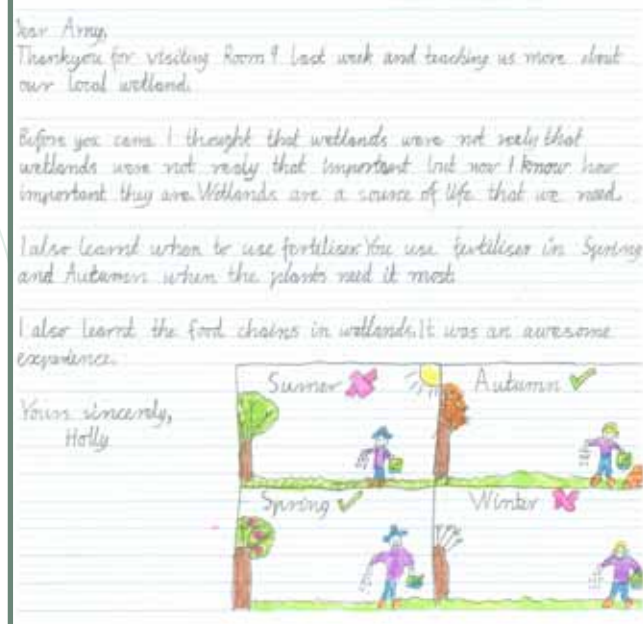
Brian Geytenbeek, Beckenham Resident

"Hi Julie. Thanks for your kindness in helping our group with the new brushcutter, it's a beauty! Please thank John M for his efforts too. Cheers."

Dick Stone, Canning River Regional Park Volunteers

"Thank you for participating in our Internship program during 2011 and for providing Jayson Stubbs with an invaluable work experience opportunity. We see the internship as an important part of the learning process, giving them some essential first-hand experience. We value your contribution and from Jayson's feedback it would appear that the program was very rewarding."

Assoc Prof Dylan Korczynskyj, The University of Notre Dame





SERCUL wins 2011 State Environment Award
for Community Achievement Metropolitan

\$1 608 597

Australian Government Funding

\$783 302

State Government Funding

\$165 275

Local Government Funding

\$358 624

Other Project \$ Attracted

>18 879 hrs

Volunteer Contribution

>\$547 302

Total Value of Volunteering

(Value of Volunteering = \$28.99/hr)

316 163

Plants Installed

>13 917

People Received Education,
via Direct Information or
On-ground Contact

108 Waterway Sites Sampled

447 Samples Analysed in the
Perth Region



The past year has really shown what can be achieved when there is confidence in creating partnerships with community organisations to deliver on-ground outcomes for our natural environment. The benefits in all areas are well documented with real science to support the outcomes.

The Urban Waterways Renewal Project, which is SERCUL's major project, is in partnership with the Australian Government, Department of Water, Water Corporation, Swan River Trust and the Cities of Armadale, Gosnells and Canning. An excellent understanding between all parties has seen all milestones met, with Australian, State and Local Government achieving outcomes required for their organisations with significant dollar savings. This major project is due for completion in June 2013. The community at large have been involved with many planting days over the many sites and there is a real understanding and appreciation of why and what is occurring in the management and repair of their local area.

SERCUL has numerous other smaller projects they have either delivered or are delivering through partnerships, all achieving positive outcomes in all areas. We are currently identifying other areas where there are opportunities to continue with delivering sound environmental benefits in partnerships and will be looking forward to applying for funding opportunities to achieve this.

Our strong relationship with the 11 Local Governments with which we work is very much appreciated as is our relationship with numerous Government Organisations. In particular the Swan River Trust who are our core funding agency, and with whom we have a very strong and lasting relationship. The community groups we work with and give support to are outstanding and must be congratulated for their amazing commitment to the repair and management of our precious environment. The voluntary hours given by these groups and organisations to on-ground work is amazing and equates to hundreds of thousands of dollars.

Last but not least I must acknowledge all the staff at SERCUL of whom I am so very proud for their excellent work ethic, commitment and amazing teamwork. They are so ably led by our CEO, Julie Robert, whose role in SERCUL's successful outcomes speak for her ability. We are so very fortunate to have Julie at the helm and on behalf of all connected to SERCUL I say thank you, Julie, for all your efforts and commitment. You are very much appreciated and respected.

Pat Hart
Chairperson
August 2012



The SERCUL staff and committee have achieved amazing levels of success throughout the financial year of 2011–2012. A major highlight was winning our first WA Environment Award for Community Achievement.

The SERCUL business has increased its turnover by 191% since 2010–2011. SERCUL has managed the increase in workload with no increase in employed human capacity by diversifying and increasing partnership involvement. Many thanks to the Financial Management team who have managed the increase in financial transactions efficiently and effectively.

SERCUL have completed a 10-year Strategic Plan. We are now working on the completion of annual business planning that will bring together the required action planning for SERCUL to continue to sustainably deliver NRM in the South Region of Perth.

SERCUL is currently involved in 50 NRM projects with 11 full-time, five part-time and 17 casuals employed during the year. The success of the SERCUL 'Green Team' in the delivery of high quality on-ground work, for both SERCUL and numerous partners, has provided the South Region with a new professional landcare team available for hire at very attractive rates.

Volunteering at SERCUL has remained steady. Volunteer hours have totalled 18 879 hours = \$547 302 value of labour.

The on-ground project delivery has been extremely successful with the planting of more than 316 000 local native plants and more than 66 hectares of weed control in bushland, wetland and river foreshores across the region.

The implementation of the 11 new Australian Government funded Urban Waterways Renewal and State NRM projects have progressed well with five projects nearing completion, four are more than 50% completed and two are yet to receive riverine restoration approvals, but have had foreshore works partially completed.

The Canning River foreshore and Regional park post fire projects have been implemented with such high-quality landcare that the sites stand as excellent demonstration sites for post fire foreshore management. The DEC Regional Parks have expressed their thanks for the high standard of weed management and dedicated landcare which has resulted in excellent recovery of native species. Congratulations to all those involved.

Water quality monitoring and Water Quality Improvement Plan development and implementation has progressed well with support from the Swan River Trust, Department of Water and Local Government partnerships. Water quality monitoring across the metropolitan region remains a major NRM issue. Despite repeated requests, the State Government is yet to come forward with a commitment that incorporates serious long-term investment in improving the standard of the water quality monitoring for the protection of our rivers, wetlands and waterways in the Swan Region. We will persist with encouraging the government to work together to provide sustainable water quality monitoring.

The Education and Promotion Program have had a bumper year with the implementation of the Fertilise Wise Fertiliser Training Program and extended Healthy Rivers PAP education program which includes the development of a K–10 Freshwater Fauna Curriculum package.

SERCUL has again held a team training session with the staff and Executive Committee members. The key focus of 'Understanding and Respecting each other' saw teams skilfully negotiate the escarpment bushland searching for inanimate objects; desperately trying to avoid being mugged by highly skilled rangers. We have noticed an immediate increase in team harmony and people taking more time to listen and collaborate effectively since the training.

I express my sincerest thanks to the SERCUL committee members and community groups who continue to provide support to SERCUL. I thank Pat Hart for her amazing motivation and inspiration for the planning and delivery of catchment management and NRM; instilling hope, vision and passion for healthier river systems and better water management processes throughout WA. Finally, I thank the SERCUL staff for their dedication and support to deliver outstanding environmental outcomes and providing us all with an amazing cohesive team.

Julie Robert
CEO
August 2012



STAFF EMPLOYED DURING 2011–2012

Chief Executive Officer: Julie Robert
Financial Administration Manager: Sandy Wainwright
Financial Administration/HR Officer: José Alcalá
Education and Promotion Manager (PAP): Amy Krupa
Environmental Education Officer (PAP): Deb Taborda
Promotion Officer: Melinda Snowball
Landcare Services Manager (DNIP): Brett Kuhlmann
Urban Waterways Renewal Manager: Ana Terrazas
Urban Waterways Renewal Officer (Armada): Glen Byleveld
Canning River/Natural Diversity Officer: Matt Grimbly
City of Canning Landcare Officer: Amy Warner
GIS and Projects Officer: Ditte Strebel
Landcare Officer: John Maliunas
Landcare Officer: Tracy Evans
Landcare Services Officer: Alice Atkinson
Water Quality and Volunteer Coordinator: Monica Estrada
Phd Researcher: Paul Lock

CASUAL TEAM STAFF

Russell Gorton
Lee Ireland
Chee Lum
Daniel Millea
Wilson Orjuela
Tony Parrelli
Megan Croty
Cory Fletcher

EXECUTIVE COMMITTEE

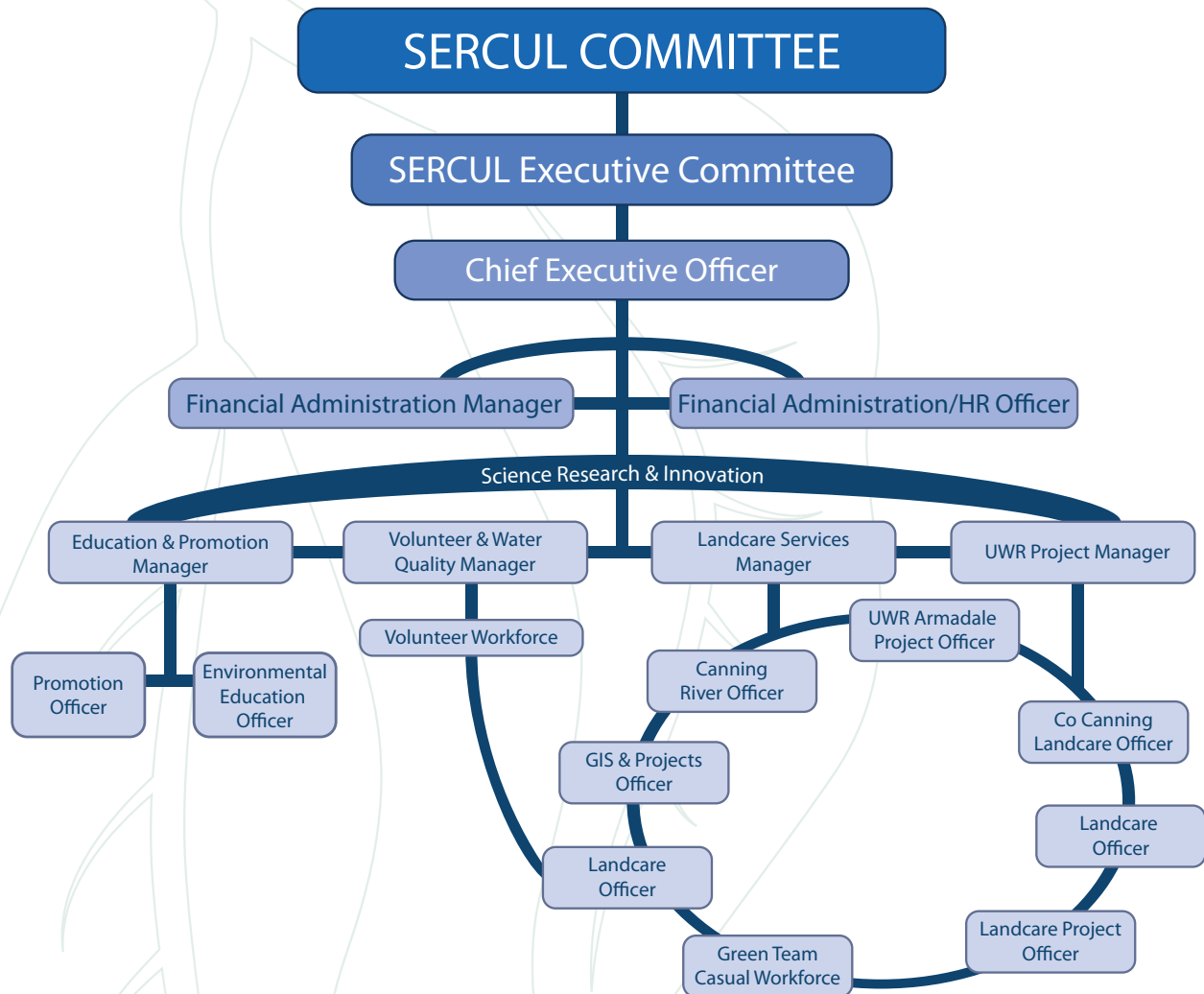
Chair: Mrs Pat Hart
Vice Chair: Mr Marc Lane
Treasurer: Mr Cam Clay
Member: Mr Brian Aldrich
Secretary: Mrs Yvonne Ward

COMMUNITY COMMITTEE MEMBERS

Margaret Matthews
David James
Russell Gorton
Dick Stone

STATE GOVERNMENT AGENCIES AND LOCAL GOVERNMENT AUTHORITIES REPRESENTED

Swan River Trust
City of Armadale
City of Belmont
City of Canning
City of Cockburn
City of Fremantle
City of Gosnells
Town of Kwinana
City of Melville
City of South Perth
Town of Victoria Park



STRATEGIC DIRECTION

SERCUL have completed a new 10-year Strategic Futures Plan which identifies pathways for the delivery of our Objectives toward achieving our Vision.

The Strategic Plan outlines realistic Short and Long-term Goals and Objectives to deliver on Four Key Recommendations:

1. Consolidation: including improving capacity security and expanding service delivery growth.
2. Marketing/Promotion: including communication and access to NRM knowledge.
3. Knowledge Management/Transfer: setting up baseline research techniques with the projects as they are being developed.
4. Education and Community Training: includes facilitating training and transfer of NRM skills out into the broader community.

VISION

To have, as a given, the Natural Resources of the South Region of Perth managed in a healthy and sustainable manner by all stakeholders for future generations.

MISSION

The aim is to use integrated natural resource management to develop cultural change in how the community views and interacts with the environment while promoting and actively participating in, the improvement of the health of waterways and other ecosystems within the South Region.

OBJECTIVES

- a. To identify priority Natural Resource Management issues in the South Region in partnership with Local Government, State Government and Industry.
- b. To ensure biodiversity within the South Region is monitored, protected and enhanced.
- c. Assist Community, State and Local Government in the coordination of Natural Resource Management in the South Region.
- d. Support and encourage the implementation of best management practice of Natural Resources within the South Region.
- e. Recognise and embrace Aboriginal, cultural and natural heritage.
- f. Foster research on matters relating to the South Region's natural and cultural heritage.
- g. Work in partnership with Local Government, State Government and industry to educate the wider community to protect our natural resources.
- h. Support and encourage the formation and training of community environment groups.
- i. Support the development and implementation of projects that occur outside the South Region that align with and benefit the delivery of the SERCUL objectives.
- j. Administer the South East Regional Centre for Urban Landcare Inc. funds to promote the objectives and outcomes of the Association.



Brushtail Possum in Beckenham Open Space



Eucalyptus rudis in Flower

SERCUL is a sub-regional body that operates in the metropolitan and peri-urban areas of the Swan Catchment. The area covered takes in most of the southern and eastern suburbs of Perth and includes Dyarguu (the Canning River), the Southern-Wungong River and parts of Derbarl Yerrigan (the Swan River). This is shown on the map below:

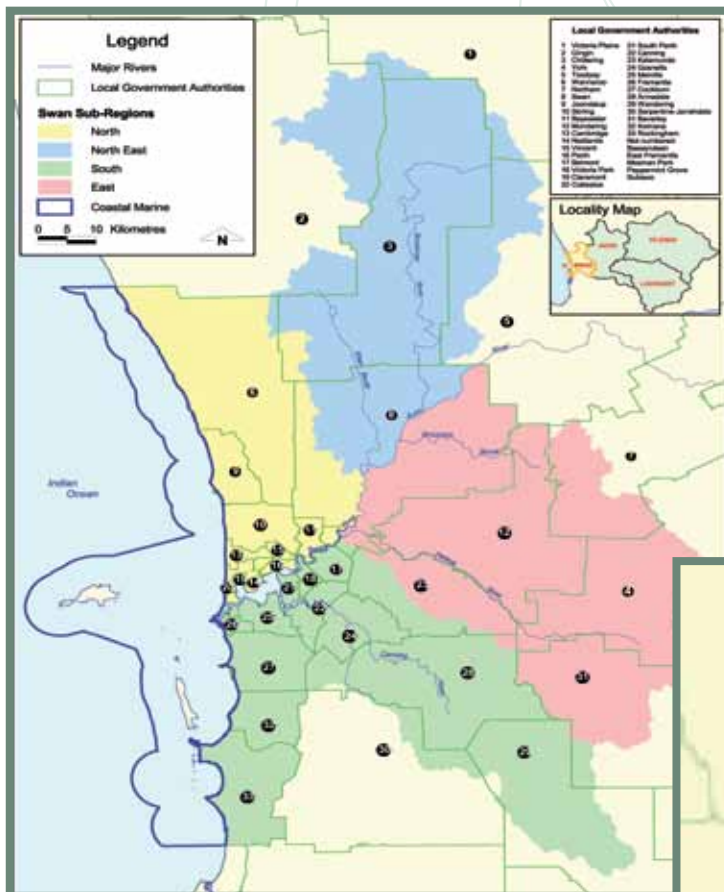
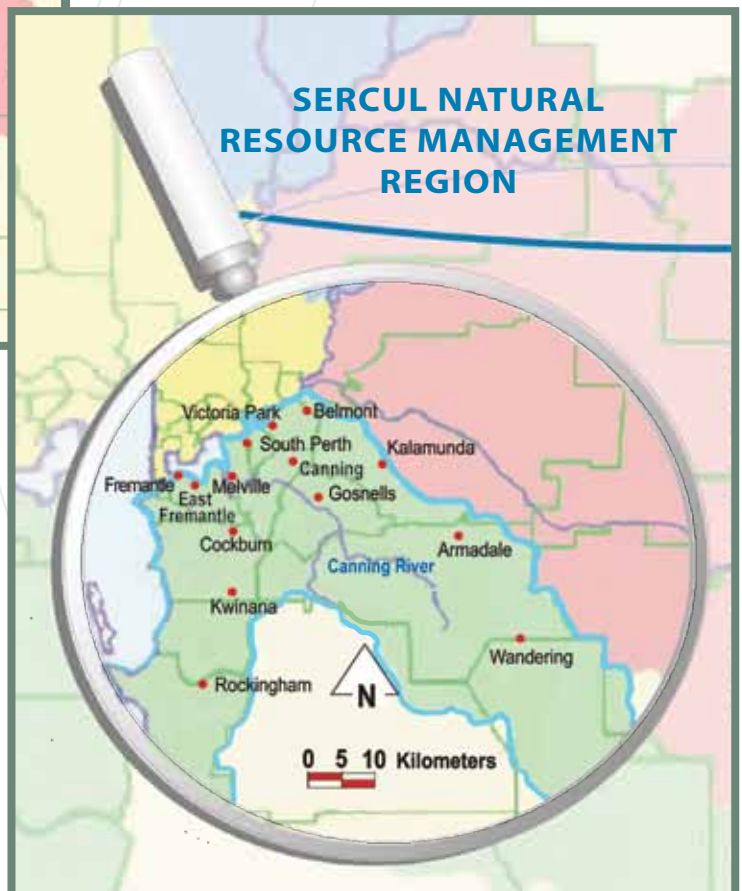
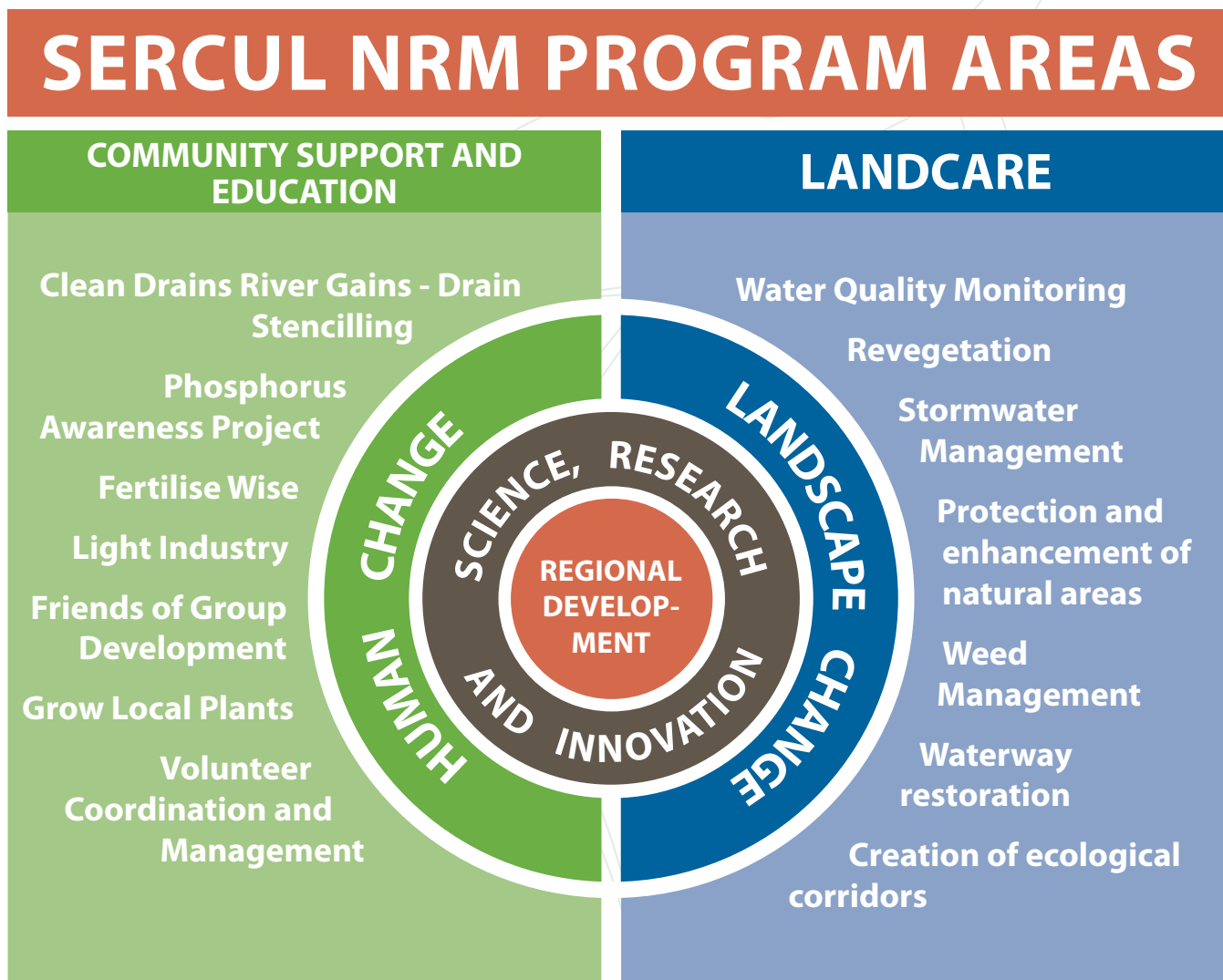


Figure 1: Division of the Swan NRM Region into five sub regions

Figure 2: South Sub Region

The South Region is defined as consisting of those parts of the Cities of Armadale, Belmont, Canning, Cockburn, Fremantle, Gosnells, Melville, Rockingham, South Perth, Shire of Kalamunda and Towns of East Fremantle, Kwinana and Victoria Park which fall within the boundary of the Natural Resource Management Region of the Swan Region.





Frog Pond Set up at Garden Week



Red Tailed Black Cockatoo



PHOSPHORUS AWARENESS PROJECT

Coordinated by Amy Krupa and Deb Taborda

This project is an educational campaign for the general community, educating them to decrease their nutrient outputs and thus algal blooms in the Swan and Canning River Systems.

Achievements for 2011–2012 include:

Displays – 19 displays at Garden Week, Annual Science Fair and festivals with over 7000 people spoken to.

School Presentations – 187 presentations to 5230 students from Kindy to Year 12.

School Planting Sessions – 3255 plants planted at 25 planting sessions by 680 students, 535 volunteer hours totalling \$15 510 volunteer value.

Community Presentations – 27 presentations to 745 people.

LGA Annual Nutrient Survey – 2012 survey sent to Local Governments in May. Received 20 responses and report is currently being written.

Supported Groups with Project Resources – on 93 occasions.

Canoeing on the Canning – hosted three with 60 teachers and community members attending this professional development workshop.

Catchments, Corridors and Coasts – on the organising committee and presented at this three-day course attended by 23 participants.

Fertilise Wise Project – over 4085 of all five brochures distributed.

Grow Local Plants Project – over 5315 of all five brochures distributed.

Brochure Distribution – over 19 550 Phosphorus Awareness Project resources distributed.

Articles – about the Project in newspapers and newsletters on 12 occasions.

Education Newsletter – four per year distributed to 265 schools and teachers.

World Environmental Education Congress – presented a poster about the Project at this international conference held in Brisbane.

Kindly funded by the Swan River Trust's Healthy Rivers Program and the Australian Government's Caring for Our Country Program.

Garden Week Display



River Guardians Training



Canoeing on the Canning



Catchments, Corridors and Coasts





FERTILISE WISE FERTILISER TRAINING

Coordinated by Amy Krupa and Deb Taborda

This program aims to train turf managers and Local Government officers in fertiliser best management practices, specific to Perth. The training is organised by SERCUL and delivered by John Forrest, a lecturer in turf management at Challenger Institute of Technology.

Achievements for 2011–2012 include:

- Seven training sessions held with 86 turf managers trained from 20 organisations including Local Governments, universities, golf clubs, country clubs and fertiliser contractors.
- One display at the Landscape Australia Expo with 100 people spoken to.

Kindly funded by the Swan River Trust through the Australian Government's Caring for our Country Program.

CLEAN DRAINS RIVER GAINS PROJECT

Coordinated by Amy Krupa and Deb Taborda

The project raises the awareness of the link between stormwater drains and natural waterways by stencilling the slogan on drains. The community is provided with information on how they can make positive behavioural changes that will see a reduction in pollutants entering creeks, lakes, rivers and wetlands.

Achievements for 2011–2012 include:

- Seven drain stencilling sessions held in Beckenham, Kardinya, Bickton, Melville, Myaree, Palmyra and Booragoon.
- 1260 drains stencilled by students from Beckenham PS and All Saints College and community members from Conservation Volunteers Australia.

**93 volunteers contributed 397 hours to the project
(Value \$11 509)**

Kindly funded by Landcare Australia through the Qantas Foundation.

CLEAN DRAINS



RIVER GAINS

FRESHWATER FAUNA EDUCATION PROJECT

*Coordinated by Julie Robert, Melinda Snowball,
Amy Krupa and Deb Taborda*

SERCUL, in partnership with Murdoch University's Freshwater Fish Group and Fish Health Unit, have added a fourth piece of film to the educational package on Freshwater Fauna of South-Western Australia.

The package consists of:

1. Two A3 brochures – Freshwater Fishes and Freshwater Fauna (crayfishes and mussels).
2. A field guide book that provides more detail and locations of the South Western Australian freshwater fishes, crayfishes and mussels.
3. Three short films (in the form of a DVD) showing the freshwater fishes, crayfishes, lamprey and mussels within their natural habitats in the South West of WA. A fourth film segment will be added shortly showing the activity of long neck turtles within the rivers of WA.

On the 3rd August 2011, SERCUL and Murdoch University launched the educational resources. SERCUL and Murdoch University's Freshwater Fish Group and Fish Health Unit staff presented the Freshwater Fauna Roadshow in Ellenbrook, Cannington, Mandurah, Bunbury and Busselton. Albany and Manjimup are yet to be presented.

SERCUL will soon complete a K-10 School's Curriculum Education Package to complete stage three of the education project.

Kindly funded by Lotterywest, Murdoch University's Freshwater Fish Group and Fish Health Unit and SERCUL.

PAUL HAWKEN PRESENTATION

Coordinated by Julie Robert

SERCUL co-sponsored a talk by Paul Hawken who has a long and illustrious career as an economist, environmentalist, journalist and public speaker.

Paul discussed the failures of the current capitalist economy with the audience of approximately 200 at the City of Canning on the 18th October 2011. He commented that rather than preserving the Earth's natural resources, and living off the income, we are consuming non-renewable assets, considering them income and using up the capital of future generations.

Kindly funded by the City of Canning and SERCUL.

Freshwater Fauna Roadshow



Western Pygmy Perch



Lamprey



Paul Hawken with SERCUL Staff





SERCUL VOLUNTEER COORDINATION PROGRAM

Coordinated by Monica Estrada

Program Aim:

The volunteer management system continues to support the landcare services delivery and administration of SERCUL. The volunteer recruitment process is constant and consistently provides the community groups and SERCUL projects with high levels of on-ground labour. In return, the volunteers get valuable landcare and community group experience while being mentored and safely trained as protectors and carers of our land and waterways.

Key achievements 2011–2012:

Coordination of volunteers into SERCUL and other community groups' activities using the principles and procedures developed during this program.

On the 18th February 2012 SERCUL held a volunteer breakfast to celebrate the outstanding achievements and to say 'thank you' to the volunteers, community and friends of groups associated with SERCUL. Sixty volunteers attended and we thanked them all for taking the time to join us on that day and for all their hard work and commitment to the environment.

We would like to thank all those volunteers who have really committed themselves to help us deliver our projects on ground, maintain our veggie garden and perform various office tasks.

Active volunteers = 52, including 30 students

Three Groups = Panama Group, Ruah and Inclusion Western Australia

Volunteer hours = 2312

**Value of volunteer hours (\$28.99/hr) =
\$67 025**

Kindly funded through the Grants to Voluntary Environment and Heritage Organisations (GVEHO).

FINANCIAL ADMINISTRATION SUPPORT TO COMMUNITY NRM GROUPS

The SERCUL Financial Administrators continue to provide financial management and/or payroll assistance to the following community groups in the SERCUL area:

- Bannister Creek Catchment Group
- Two Rivers Catchment Group
- Wilson Wetlands Action Group
- Armadale Gosnells Landcare Group
- Friends of G.O. Edwards Park
- Canning River Regional Park Volunteers
- Friends of Wireless Hill
- Kaarakin – Black Cockatoo Preservation Society
- Australian Association for Environmental Education WA Chapter.

SERCUL provided two groups and two other organisations with the Volunteer Management System template and Knowledge Management System guidance.

VOLUNTEER ADMINISTRATION SUPPORT AND TRAINING

SERCUL completed a training and management support system program while exploring what support mechanisms are necessary to maintain community NRM infrastructure without the necessary financial means to achieve it.

Facilitating a well-organised system of volunteers, work experience students, joblink employment seekers to add capacity and capability to our project delivery has proven to be one way of meeting the needs without high levels of support infrastructure.

NEW GROUP FORMATION AND DEVELOPMENT

The Friends of Booragoon and Blue Gum Lakes group has formed and SERCUL have assisted them with gaining funding and will undertake logo development soon.

Two other newly-formed groups have been provided with logo development support, training and planning assistance as well as funding through supporting agencies.

A Friends of Woodlupine Creek, Magnolia Way and Juniper Way Reserves group has formed and new volunteers may like to contact Heidi Pember to join the group (Contact 9453 9813).

Wilson Wetlands



Jo Stone from CRAPV



Logo Developed for FO Bull Creek



Blue Gum Lake





Liege Street Wetland
Microdredge Removing the Pyritic Sludge



Liege St Wetland Sedge Replanting



Anvil Way Hydromulching of the Realigned Drainage Channel



Anvil Way Sedge Establishment

DRAINAGE NUTRIENT INTERVENTION PROGRAM (DNIP)

Coordinated by Brett Kuhlmann

LIEGE ST WETLAND

The removal of pyritic (potentially acidic) sludge, which has caused a decline of the sedges within the wetland, was undertaken in May, in partnership with the Swan River Trust and the City of Canning. Following the removal of the sludge, the bed levels within the wetland were raised. The aim of raising the bed levels is to alter the inundation regime during the summer period to inhibit the reformation of the pyritic sludge. Revegetation of the wetland with native sedges was a challenge due to predation by the local Swamp Hen population.

Total plants planted = 18 688

Total volunteer hours = 255 (Value \$7395)

WHARF ST WETLAND

Remediation of the two subsurface flow wetlands commenced during this reporting period in partnership with the Swan River Trust and the City of Canning. The concrete aggregate within the sub surface flow wetlands will be replaced with a laterite aggregate. Existing sedges within the sites were salvaged to be replanted at the completion of the remediation work. Replanting of native sedges within one section of the wetland was also undertaken.

Total plants planted = 2400

Total volunteer hours = 67 (Value \$1943)

ANVIL WAY BASIN

Weed management throughout the basin and around the greater project area was the main focus of restoration activity at this site. Infill planting around the batters was conducted. The sedges within the basin however, have become well established over this year with no further need for infill planting. The revegetation of a section of realigned drainage channel downstream of the project area was funded by the Water Corporation. This involved bank stabilisation through the use of jute matting, tubestock planting, direct seeding with native species and hydromulching.

Total plants planted = 4900

Total volunteer hours = 44 (Value \$1276)

Kindly funded by and in partnership with the Swan River Trust, Water Corporation and Local Government Authorities.

CANNING RIVER RESTORATION AND NATURAL DIVERSITY SOUTH PROJECT

Coordinated by Matt Grimbly

The Canning River Restoration Project, now in its fourth year, encompasses 61ha of weed control and restoration on the Canning River foreshore and some of the tributaries. There have been 1158 volunteer hours contributed to this project over the 2011/12 financial year and 40 500 plants installed across the project sites.

Total plants planted = 40 500

Total volunteer hours = 1158 (Value \$33 582)

CANNING RIVER FORESHORE RESTORATION

Weed control and revegetation across five sites has focussed on returning the highly-degraded understorey to very good condition; thus providing habitat, water quality and bank stabilisation benefits to the project sites and adjacent aquatic habitats. The sub projects are:

- Canning River Regional Park – Kent St to Bacon St, Wilson
- Hester Park/Whitehouse Community Church – Nicholson Rd, Langford
- Yule Brook and Canning River confluence – Kenwick Link, Beckenham
- Canning River and Corriedale Springs confluence, Corriedale Place, Thornlie
- Goolumrup Reserve – Roberts Rd, Kelmscott – Greatly assisted by Friends of Goolumrup Reserve
- Canning River Regional Park at Bannister Creek – Adenia Rd, Ferndale

Kindly funded through State NRM Grants.

CANNING RIVER REGIONAL PARK POST FIRE PROJECT

This project is progressing very well with strong recruitment of native species from the seed bank made possible by an intensive weed management regime.

Project partners are SERCUL, DEC, City of Canning, Canning River Regional Park Volunteers, Wilson Wetland Action Group and the Swan River Trust.

Kindly funded by the Swan River Trust.

Transect Monitoring – CRRP
Post Fire Project – Bacon St, Wilson



BEFORE, August 2011

AFTER, June 2012



Transect Monitoring – CRRP
Post Fire Project – Bacon St, Wilson

CRRP, Bacon St, Wilson
National Tree Day with TRCG



Handweeding – CRRP March 2012





Mill St Drain – Hydrocotyle Infestation



Hydrocotyle control in Bannister Creek



CVA Working at Williams Road



CVA Planting at Bannister Creek

CANNING RIVER REGIONAL PARK WATSONIA AND GLADIOLUS CONTROL

Lambertia Flats, Ferndale Cr, Ferndale

Spring control of Watsonia and Gladiolus in October 2011 has resulted in a significant decrease in these weeds in 2012. Control will again occur in Spring 2012 and will further decrease the abundance and coverage of these weeds.

Kindly funded by DEC Community Grants.

HYDROCOTYLE RANUNCULOIDES PROJECT

Mill St Drain Hydrocotyle Control

Spraying occurs every six weeks with the goal of eradication within three years.

Mill St Drain is Water Corporation infrastructure and SERCUL has the contract to undertake *Hydrocotyle ranunculoides* control.

Wilson Lagoon Hydrocotyle Control

Control of *Hydrocotyle ranunculoides* occurs every six weeks. The aim of this project is eradication from the main water body of Wilson Lagoon within three years.

Kindly funded by DEC Community Grants, SALP, Swan River Trust, Water Corporation and City of Canning.

CHEVRON – CONSERVATION VOLUNTEERS AUSTRALIA PARTNERSHIP

This year SERCUL was provided with 15 weeks of Conservation Volunteers Australia time to help in river restoration projects.

Numerous groups have been allocated CVA time this year including: Canning River Regional Park Volunteers; Wilson Wetland Action Group; Friends of Brixton Street Wetland; Two Rivers Catchment Group; Bannister Creek Catchment Group; Armadale Gosnells Landcare Group; and numerous SERCUL projects including the Urban Waterways Renewal projects.

Thank you to CVA who has made an extra effort to improve volunteer numbers over the winter period this year. A big thank you to Chevron for the sponsorship of this project. A greater level of river restoration has been achieved due to Chevron's support.

Total volunteers = 703
Total volunteer hours = 3745
(Value \$108 567)

Kindly funded by Chevron and Conservation Volunteers Australia.

WIRELESS HILL – SUPPORTING THE FO WIRELESS HILL PARK

Coordinated by Tracy Evans and John Maliunas

Providing on-ground landcare expertise at Wireless Hill Park has continued with its second year of hand weeding. The restoration work is proving very successful with a noticeable reduction in weeds, particularly perennial veldt grass. SERCUL is continuing this partnership with the group and will include detailed vegetation and weed mapping during 2012–2013.

The City of Melville donated 100 seedlings which were installed during the winter months.

Kindly funded by SALP and Caring for our Country Community Action Grants.

SLAB GULLY RESTORATION

Located on Brookton Hwy, Roleystone

SERCUL were contracted by the City of Armadale to revegetate the three constructed basins along Slab Gully that were constructed between 2010 and 2012. Works have included direct seeding, planting and weed control.

Kindly funded by the City of Armadale.

COPULUP LAKE

Located in the City of Cockburn

The Water Corporation contracted SERCUL to undertake planting, weeding and maintenance at Copulup Lake (also known as Russell Rd Buffer) off Hammond Rd in Success.

With the help of the SERCUL casual team, hand weeding and pruning of the track around the lake was undertaken immediately; however, planting had to be postponed due to an algae Bloom. *Microcystis aeruginosa* was floating in the lake from April to May.

By the end of July more than 350 *Schoenoplectus validus* (11lts) were planted near the inlet and outlet structures and 500 *Baumea articulata* had been planted on the edge of the lake.

The team will continue to maintain the site for another two years. For bird lovers, the number of ducks and ducklings at the site is worth the visit.

Kindly funded by the Water Corporation.

Weed Mapping at Wireless Hill Park



Slab Gully Restoration June 2012



Copulup Lake



Copulup Lake Planting





Mistletoe Bird at SERCUL

Great Gardens Workshop held at SERCUL



New Flooring in Permaculture Garden



Finished Flooring of the Permaculture Garden



YULE BROOK HOMESTEAD

Coordinated by John Maliunas and Tracy Evans

A new rainwater tank is now feeding rainwater into the SERCUL storage nursery, courtesy of the new automatic pump and irrigation system. Our thanks to the WA Planning Commission (WAPC) for their support and providing us with this new equipment.

Two new regular volunteers who provide us with one or two days per week of their time has enabled the brickwork to be completed and the landcare shed area to be maintained in a very neat and organised manner.

Finally, a big 'thank you' to our volunteers who have helped over the last year with a variety of jobs at the homestead and Beckenham Open Space (BOS). Your kindness and generosity make it a pleasure to work with you.

LEASE AGREEMENT WITH WAPC

SERCUL have signed a five-year lease agreement with the WAPC to continue to use the Yule Brook Homestead as the base for running the SERCUL Community Landcare business.

PERMACULTURE GARDEN

The permaculture garden has had new flooring modules installed, covered with blue metal aggregate. The flooring grid work is made from recycled plastic chairs and bins. The new base for the garden enables disability access to the garden beds and a good permeable base for weed control and safe passage. There are also new raised garden beds for wheelchair access. Funding from Junkbusters was used to purchase the new flooring products and we thank them sincerely for their contribution. We would like to thank the Great Gardens workshop for erecting these beds and assisting in installing the irrigation.

We would also like to give a big 'thank you' to Panama Studios, Inclusion WA and Ruah for their continued volunteering and support.

BUSH TUCKER GARDEN

SERCUL have garden beds with Australian native bush tucker plants on display. The plants are all labelled and information is available on the SERCUL website, or in brochure form available from the SERCUL office.

Kindly funded by the WA Planning Commission (WAPC), SERCUL and Junkbusters.

BECKENHAM OPEN SPACE AND MEN OF THE TREES MEMORIAL GROVE PROJECT

Coordinated by John Maliunas and Tracy Evans

The Bowra & O'Dea and Men of the Trees (MOTT) Memorial Grove project is a very successful social well-being project being integrated with the restoration of the Beckenham Open Space. The social benefit from this project, though difficult to measure, is observed as an amazing opportunity for people who have experienced grief. The tranquility and ambience of the Canning River foreshore and the Yule Brook wetlands naturally nurtures the people who take the time to enjoy the surrounds.

SERCUL, with assistance from some generous beneficiaries of the groves, have installed a number of seats and picnic tables within and alongside the groves. We have had a very successful year at the BOS with many activities for our volunteers to participate in.

Weed control has been very successful this year, with staff continuing weeding works. The planting season went well with over 4000 seedlings planted, kindly donated by Bowra & O'Dea and MOTT for the memorial groves. Once again we'd like to thank all our volunteers who participated. Their care and attentiveness have truly helped us achieve great results.

GOVERNOR'S VISIT

We were fortunate to have some special guests at our Schools Tree Day planting event at the Beckenham Open Space, including the Governor of WA, the Honourable Malcolm McCusker; the Gosnells Mayor, Mr Dave Griffiths; the Minister for Planning, Mr John Day; and the Director of Bowra & O'Dea, Mr Joe O'Dea. Their attendance was warmly received by school children from Beckenham Primary School and Cannington Community Education Support Centre.

The children were delighted to meet Mr McCusker and the other special guests. We thank all the special guests and the Men of the Trees staff and volunteers who assisted SERCUL to make this day a success.

Total plants planted = 4000

Total volunteer hours = 757 (Value \$21 953)

Kindly funded by Bowra & O'Dea and the Men of the Trees and the WA Planning Commission.

2012 MOTT Memorial Grove site



February 2011

September 2012



2012 MOTT Memorial Grove site

Planning Minister John Day, Gosnells Mayor and Malcolm McCusker



Malcolm McCusker Giving a Speech to School Students





Julie Robert with Senator Don Farrell



Pollution Training



Planting Day with FODenmark



Riverside Lane Construction

URBAN WATERWAYS RENEWAL PROJECT (UWR) OVERVIEW

Coordinated by Ana Terrazas

The Urban Waterways Renewal (UWR) project sites are nearing completion. The sites are looking fantastic and we are sure the works will achieve amazing water quality improvement over time.

Substantial Water Sensitive Urban Design (WSUD) and planning is in progress and being installed. Detailed dialogue with land managers and other stakeholders has occurred during the project planning process.

The project works this year have included planting, weeding, rubbish removal, site redesign, major construction works, bushland and wetland restoration and ongoing monitoring.

We sincerely thank all the volunteers for their continued support which has enabled us to undertake monitoring, planting, weeding and rubbish removal.

UWR achievements:

- On-site visit by Senator Don Farrell.
- More than 20 community and corporate planting days have been held.
- Facebook photo albums have been created for each catchment to showcase the progress of each project.
- Four media articles in local community newspapers.
- Site signage is being installed.
- Nine riffle structures have been constructed and major river restoration has been implemented.

Total plants planted = 119 694

Total volunteers = 616

Total volunteer hours = 2583.5

(Value \$74 921.50)

Kindly funded by the Australian Government Water for the Future initiative through the National Water Security Plan for Cities and Towns program with matching funding from the State and the Local Governments of Canning, Gosnells and Armadale.

UWR SOUTHERN RIVER CATCHMENT CITY OF ARMADALE

Coordinated by Glen Byleveld

Total plants planted = 61 700
Total volunteers = 321
Total volunteer hours = 1187
(Value \$34 423)

STRAWBERRY DRIVE

Located on Strawberry Drive near Lisborn Way in Armadale.

This site has been transformed from a contaminated, weed infested compensation basin into a seasonal wetland.

Earthworks were completed in June 2012 with the removal of 350 m³ of contaminated soil, weeds and rubbish. The basin has been lined with a soil amendment and reshaped to increase the surface water flow path which will increase nutrient uptake by native plants.

The basin has been revegetated with native plants thanks to Willandra Primary School and students from Polytechnic West.

Total plants planted = 11 000
Total volunteers = 112
Total volunteer hours = 277 (Value \$8033)

WUNGONG RIVER AND RIVERSIDE LANE

Located off Riverside Lane either side of Lake Road/Wungong River Bridge.

A winter billabong has been created at the Riverside Lane site to intercept stormwater runoff from the adjacent residential area. Weed control and revegetation works are ongoing.

Earthworks for the Wungong River foreshore and floodplain restoration project sites commenced in May.

Thank you to Dale Christian High School Bush Ranger Cadets, students from Polytechnic West, SERCUL volunteers and Conservation Volunteers Australia for assisting with the revegetation and rubbish removal.

Total plants planted = 31 700
Total volunteers = 129
Total volunteer hours = 660 (Value \$19 140)

Strawberry Drive Before Works



Strawberry Drive After Works



Riverside Lane Before Works



Riverside Lane After Works





Oil Spill at Third Road Basin



Grovelands Road Reserve



Construction of Riffle at Williams Road



Williams Road Rock Channel

THIRD AND SEVILLE BASINS

Located on Gillam Drive in Armadale.

Earthworks started in June 2012 including removal of contaminated soil, weeds, rubbish and installation of filter media to a section of Seville basin.

An Oil Pollution survey has been conducted in the adjacent industrial area which discharges stormwater to both basins. This survey has been supported by the City of Armadale and Department of Environment and Conservation Pollution Response Unit.

Total plants planted = 3000

Total volunteer hours = 30 (Value \$870)

GROVELANDS ROAD BASIN

Located in Kuhl Park Reserve, off Westfield Road.

Earthworks have been postponed to summer 2012–13 due to delays with approvals. Upland planting will be completed with the Big Help Mob day in August with planting of over 7000 local native plants.

Total plants planted = 3500

Total volunteer hours = 90 (Value \$2610)

WILLIAMS ROAD MAIN DRAIN RETROFIT

Located between Braemore Road and Seville Drive in Seville Grove.

Previously a lawned stormwater swale, the Williams Road Main Drain UWR project has undertaken major construction works to reduce the in flow of sediment and associated nutrients into the Wungong River. The works are now completed and include major bank stabilisation, using jute matting, installation of two large rocky riffles, a biofiltration swale and siltation/sedimentation basin. The construction of the siltation basin included the removal of over 3500 m³ of sediment.

Plants have been installed with the help of the Armadale Gosnells Landcare Group and other volunteers such as Cecil Andrews High School, Atkins Australasia, CVA and Now Green.

Total plants planted = 12 500

Total volunteer hours = 130 (Value \$3770)

Kindly funded by State NRM and the Swan River Trust and City of Armadale for the implementation of the Swan Canning Water Quality Improvement Plan.

URBAN WATERWAYS RENEWAL CITY OF GOSNELLS

Coordinated by Brett Kuhlmann

Total plants planted = 28 437

Total volunteers = 152

Total volunteer hours = 634 (Value \$18 386)

BICKLEY BROOK CONFLUENCE

Located near the Royal Street/Canning River Bridge in Kenwick.

Earthworks for the Bickley Brook Confluence site were completed in May 2012. The removal of major weed species including Blackberry, Watsonia and White Ash trees enabled the construction of a natural meander and nutrient intervention biofiltration swales.

To redirect the water flows two new rock riffles were installed, to aide in sediment removal, increase waterway oxygenation while increasing the habitat for fauna using the waterway. The site has been revegetated with local plants. Weed control and management is ongoing.

This site is an excellent demonstration site to visit and the monitoring of the site will continue for a further 12 months.

Total plants planted = 8675

Total volunteers = 57

Total volunteer hours = 217 (Value \$6293)

BICKLEY BROOK MANDARIN

Located on Mandarin Road in Maddington where the waterway crosses under the road.

The local business community are excited by the aesthetic and physical improvements to 'their' local waterway in Maddington. Some planting with the community has been completed in the last season and weed control is continuing while approvals are being sought for the restoration of the waterway. Plant survival rates have been good and we thank the local businesses for removing rubbish and keeping watch over the newly restored areas.

River restoration and WSUD works have been postponed to summer 2012–13 due to delays in design approvals.

Total plants planted = 5322

Total volunteers = 39

Total volunteer hours = 171.5 (Value \$4974)

Swale at Bickley Brook Confluence



Planting Day with FO Mexico at Bickley Brook Confluence Site



Establishment of Last Years Planting Mandarin Road



Mandarin Road Sediment Sampling





Rain Garden Under Construction

Eva to Tonkin
Establishment of Last Years Planting



Eva to Tonkin
Replanting After a Fire



Planting Day at Eva Street



BICKLEY BROOK RAIN GARDENS

Located on Kelvin Road near Wildfire Road in Maddington.

The City of Gosnells are managing this project. Construction of the first rain garden commenced during the summer, in the Kelvin Road site. The main construction works were finished in June 2012, just prior to the first rains.

Monitoring equipment has been selected so thorough water quality monitoring data can be collected for this WSUD intervention. Plants have been selected and purchased and will be installed when the second rain garden is constructed in late October 2012, pending the site weather and soil conditions.

BICKLEY BROOK EVA TO TONKIN

Located between Eva Street and Tonkin Hwy along the north bank of Bickley Brook.

This project includes the installation of minor natural WSUD river restoration features near the Tonkin Hwy end of the waterway. Major weed removal of *Watsonia*, Blackberry, Japanese pepper and grasses has enabled natural regeneration as well as installation of local plants that would not return naturally.

The 'in waterway' project design plans have been submitted for comment and approval to the Water Corporation. Excess soil and sediment has been removed from the brook.

Seed collection was undertaken at this site to enable endemic local species of plants to be grown and planted back into the site.

Upland planting has been completed and in stream sedges and weed control continues. Following a fire event, one section of the project area required replanting.

Detailed and regular bird surveying by local volunteers is continuing. If you would like to help contact SERCUL.

Total plants planted = 14 440

Total volunteers = 46

Total volunteer hours = 246 (Value \$7134)

Kindly funded by the Australian Government Water for the Future initiative through the National Water Security Plan for Cities and Towns program with matching funding from the State, the City of Gosnells and the Community.

URBAN WATERWAYS RENEWAL CITY OF CANNING

Coordinated by Brett Kuhlmann and Julie Robert

BANNISTER CREEK LIVING STREAM

*Located between Hybanthus Road in Ferndale
and Acacia Place in Lynwood.*

This project has converted an unhealthy, weed infested section of Bannister Creek 'Main Drain' into an attractive living stream that has a passive recreational parkland alongside the foreshore. The works have been completed (May 2012) while maintaining the essential conveyance of drainage stormwater from the surrounding urban and industrial catchments.

The earthworks were undertaken by the City of Canning civil works team. They commenced in February 2012, with the construction of a limestone erosion mitigation wall and the installation of three nutrient intervention (water treatment) riffles. The major works have also included the installation of two large and one mini rock riffle, the realignment of the channel away from houses, installation of bank protection matting and silt removal.

Many thanks to the City of Canning civil works team who are a pleasure to work with. Their machine operating skill levels are exceptional and we congratulate them on their technical expertise in undertaking this collaborative environmental partnership work delivering excellent ecosystem improvements within the City.

A trial of a suitable water treatment media took place in March alongside the Whaleback Lake; however, the trial was aborted due to flow issues. Alternate treatment media are being sought by the Water Corporation for another trial.

The removal of massive clumps of 'bamboo like grass' *Arundo donax*, and wall to wall Blackberry and Morning Glory vines, has been a major success. Follow-up weed management was very successful and planting has commenced to replace the weeds with natives.

Bannister Creek Catchment Group hosted a National Tree Day at the end of July where local volunteers planted more than 1000 plants.

Total plants planted = 29 557

Total volunteers = 143

Total volunteer hours = 762

(Value \$22 098)

*Kindly funded by the Australian Government
Water for the Future initiative through the National
Water Security Plan for Cities and Towns program
with matching funding from the State, the City of
Canning, Water Corporation and the Community.*

Bannister Creek Rock Riffle



Bannister Creek
Media Treatment Riffle and Wall



Sedges Growing Beautifully



Iron Enriched Wood Chips
Trial at Whaleback Lake





**Bannister Creek
CATCHMENT GROUP**

BANNISTER CREEK CATCHMENT GROUP

*Coordinated by the City of Canning funded
Landcare Officer, Amy Warner*

Two SALP funded projects have been undertaken at Bannister Creek this year with the continuation of the Understory Project at the Living Streams 1 and 2 sites and the removal of threatening weeds from the Ferndale sections between Hybanthus Road and Adenia Bridge. SALP funding provided for 2500 plants with an additional 1000 donated by SERCUL to this project.

Great planting success was achieved this year for the Understory project and the BCCG are pleased with the rates of germination from direct seeding activities in 2011.

The removal of threatening weeds from the Ferndale section of Bannister Creek included Chilean Willow, feral Casuarinas, *Cyperus papyrus*, Blackberry, *Typha orientalis* and Hydrocotyle. This has resulted in an ideal planting area adjacent to Adenia Bridge.

Water Hyacinth was also found in Bannister Creek this year which was a very unwelcome visitor. Thanks to the City of Canning Bushcrew for their swift efforts in removing this declared weed.

Total plants planted = 3500
Total volunteer hours = 81 (Value \$2025)

Kindly funded by the Swan Alcoa Landcare Program.

BCCG NATIONAL TREE DAY 2012

As project partners for the Bannister Creek Urban Waterways Renewal project the BCCG have been providing assistance by hosting numerous planting events at the site.

Two National Tree Day events were held in the UWR section of Bannister Creek.

Sunday 29th July was a community planting event with 27 participants attending. Monday 30th July saw the Ruah group have 66 people attend the planting session. Both events were a great success. Thank you to all our volunteers.

The BCCG would also like to thank the City of Canning Bushcrew officers for their efforts which are very much appreciated.

Total plants planted = 3500
Total volunteer hours = 199.5 (Value \$4987.50)

Germination From Direct Seeding



Cyperus & Typha
Control at Bannister Creek



National Tree Day Bannister Creek



BCCG's Youngest Volunteers Allegra & Layla



BUSHFOREVER SITE 456: TOM BATEMAN – NICHOLSON RD BUSHLAND

Coordinated by Amy Warner

Located between Wilfred Road and Roe Hwy in
Langford.

The BCCG have received funding from DEC Environmental Community Grants and the State NRM program for the Nicholson Rd Bushland site and through SALP for weed control at Tom Bateman Wetlands. Both sites form the Bushforever site 456 with weed control being the major focus of the projects.

Two endangered plant communities exist in the site and three significant plant types have been identified making this an area of high conservation value. Exotic grass invasion control and revegetation of the area leading from the Roe Hwy wildlife corridor have been the priorities for this site.

Seed collection activities at Nicholson Road Bushland in 2011 have enabled the BCCG to plant provenance stock at the site forming an important naturally vegetated corridor from the Roe Hwy wildlife corridor providing improved connectivity with the Tom Bateman wetlands.

A Clean Up Australia Day event was held at the bushland and following the event a pile of dumped asbestos has been professionally removed.

SALP funding for Tom Bateman wetlands foreshore will enable SERCUL to remove introduced plant species (weeds) including *Bacopa monnieri* also known as Brahmi. *Bacopa monnieri* is a relatively recently acquired WA wetland weed species. The BCCG are currently investigating methods to deal with this.

The City of Gosnells donated nearly 2000 local plants for this site which have been installed by volunteer groups including the Wood Group, Yule Brook College, Newman College and CVA.

The BCCG would also like to thank a volunteer Alan Stanton for his volunteer efforts and interest in this site. Thank you Alan.

Total plants planted = 5921

Total volunteer hours = 349 (Value \$8725)

Kindly funded by DEC Environmental Community Grants, State NRM program and Swan Alcoa Landcare Program.



Bannister Creek
CATCHMENT GROUP

Bacopa monnieri
Forms a Thick Carpet Over Wetlands



Bacopa monnieri in Flower



Seed Collection in Nicholson Rd Bush



Jewel Beetle Found While Seed Collecting





A. manglesi at Vellgrove Sept 2017



HAWKESBURY – VELLGROVE ECOLOGICAL CORRIDOR PROJECT

Coordinated by Amy Warner

Located along Vellgrove Avenue in Parkwood and on Hawkesbury Drive in Willetton.

Hawkesbury Lakes are in the final stages of restoration with ongoing weed control the major focus for the site. Revegetation efforts have been concentrated on the Vellgrove site with 1060 plants planted, with a further 1200 plants donated through SERCUL.

Many volunteer hours have been put into this site with school groups, corporate volunteers and international visitors. Plant survival rates have been extremely good over the last two planting seasons.

Unfortunately Marri Tree 'Canker' (an infectious fungal disease) was detected earlier this year in some established trees and newly planted trees. The BCCG is working with the City of Canning and Murdoch University to manage this new issue.

Marri Canker info:

http://www.cpsm.murdoch.edu.au/downloads/presentations/prsnt_APPSTrudyPaap.pdf

Total plants planted = 2260

Total volunteer hours = 415 (Value \$10 375)

Kindly funded by the Swan Alcoa Landcare Program.

LYNWOOD SENIOR HIGH SCHOOL

Coordinated By Amy Warner

The BCCG has been working closely with Lynwood Senior High School students since the introduction of a specialist program for environment and life sciences in 2011.

The Harmony Gardens project has focused on creating a local native garden alongside the Intensive English Centre (IEC) in Lynwood.

Two Clean up Australia Day school events were held at Bannister Creek this year with students from LSHS finding an array of rubbish at the site. Rubbish cleaned up included prams, bicycles, building materials, garden waste and clothing.

The school has also undertaken numerous planting activities within the UWR project site this year. Thanks to all the staff and students for their hard work and continued support.

Total volunteer hours = 128.5 (Value \$3212.50)



Hawkesbury Lakes 2012



LSHS Students Clean Up Aust. Day



LSHS planting in their Harmony Garden

ARMADALE GOSNELLS LANDCARE GROUP

Coordinated by

*Community Landcare Coordinator: Crystal Gilliam
and Les Judd*

Community River Restoration Officer: Dan Walker

The Armadale Gosnells Landcare Group (AGLG) have had a busy year restoring foreshore and bushland in the Cities of Armadale and Gosnells. Working over 26 sites, AGLG work with both Cities to undertake weed control and native seedling planting to restore these areas.

On Ground Funding: A total of \$153 000 was received in funding grants from the City of Armadale, City of Gosnells, Department of Environment and Conservation, Swan River Trust, Alcoa, the Australian Government Caring for our Country program, Landcare Australia and Coca-Cola.

AGLG has worked with 26 Friends, school and community groups to run 32 planting days, and have assisted with four community workshops and displays.

Total plants planted = 109 950

Total volunteers = 1404

Total volunteer hours = 5853

(Value \$129 192)

EROSION CONTROL AT ROLEY POOL

AGLG also worked with the City of Armadale, Swan River Trust and Now Green to undertake erosion control at Roley Pool in Roleystone. AGLG installed a pipe to carry the water to the bottom of the hill and created a basin and channel lined with matting and sedges to trap sediment as the water flows toward the river.

Kindly funded by the City of Armadale, City of Gosnells, Swan River Trust, Alcoa, Perth Region NRM, Western Australian Planning Commission, Australian Government Caring for our Country Program, Landcare Australia and Coca-Cola.



Girl Guides Planting at Sutherland Park



Roley Pool Erosion Project



School Planting Day at Strawberry Drive



Big Help Mob Planting at Grovelands Basin



Sampling at Christian St, Bayswater Brook



Sampling at Plume Park, Bennett Brook



Bull Creek Catchment Sampling at Brockman Park



Sampling at Anvil Way – DNIP Project



WATER QUALITY PARTNERSHIP PROJECT

Coordinated by Monica Estrada

This project is supported by the Local Government Authorities (LGAs) involved and by the Swan River Trust (SRT). The project aims to promote a cooperative approach to water quality monitoring (WQM) across the Perth Region. SERCUL's main roles, in conjunction with the Aquatic Sciences Branch of the Department of Water (DoW), are: assist stakeholders to assess their water quality data requirements; provide assistance in the preparation of sampling and analysis plans; undertake sampling and write annual reports.

Key achievements 2011–2012:

- Three WQM programs conducted: Bayswater Brook, Bennett Brook Catchment and Bull Creek Catchment and their respective reports were prepared.
- Eight partnerships with LGAs and other institutions: Bayswater, Melville, Swan, South Perth, Bassendean, Whiteman Park, DoW and SRT.
- The data has been providing information for the SRT and DoW calibration models.
- An analysis of the nine-year water and sediments sampling results from Bennett Springs Estate was completed.
- Assistance to the DoW in the monthly water quality sampling at DNIP projects at nine sites and to the City of Bayswater in water quality and sediments sampling at Bassendean and Bennett Springs Estate.
- Analysis of the results of the water quality data from the City of South Perth collected between 1989 and 2008. The first product, submitted in August 2011, included the data summations of water quality data from nine catchments within the city boundaries. Under preparation is the second report including graphs and tables per catchment and per parameter.
- Two specific trend analysis reports are under preparation for Bennett Brook catchment (ten-year analysis) and Belmont Stormwater (five-year analysis).
- Five Sampling Analysis Plans (SAPs) developed for 2012–2013 for Bennett Brook, Bayswater Brook, Bull Creek catchment, City of South Perth catchments and Bannister Creek.

Number of catchments: 6

Sampling events: 27

Sample sites: 108

Water samples collected: 447

Sediment samples collected: 78

Macrophytes samples collected: 18

Kindly funded by the Swan River Trust and the Local Government Authorities involved.

WINNING WITH THE LAGGARDS

A small factory environmental management support research project

Coordinated by Paul Lock – PhD Candidate

Small and Medium Enterprises (SMEs) are an integral part of society, the very smallest businesses (micro, 0–4 employees) make up the vast majority of Australian businesses, and are crucial players in the sustainability and environmental management debate. Think mechanics, printers, transport depots, chemical blenders, landscape yards, etc. Although most SMEs do not pose a serious environmental threat individually, the collective pollution from tens of thousands of businesses poses a very real threat.



Society relies on the 'free' ecosystem services provided by nature such as clean air and water, and natural resources for manufacturing, recreation and amenity opportunities.

Customers whom make their purchases solely on lowest prices, without concern for the goods and services supply chain, are in effect, supporting pollution and poor business environmental practices. Supporting polluting activities provides further encouragement to businesses acting illegally, and makes businesses acting responsibly less competitive. These customers are getting lower prices because the cost of pollution management is shifted to the environment, as a loss of 'free' ecosystem services.

SERCUL conducts research and provides advice to government and business organisations to promote 'fair' education based regulation of SME environmental management that is delivered in the most cost effective way. Enforcement is recommended for uncooperative businesses whom insist on gaining an unfair advantage by passing the costs of pollution to the community while contaminating the environment. Regulating all businesses to ensure minimum environmental management standards are maintained is essential for responsible businesses to remain competitive. This form of regulation and compliance checking assists businesses to balance individual rights and benefits with community rights and benefits.

Achievements include:

- Conceptual diagrams illustrating the interconnections between factors involved in SMEs adopting environmental management, and the formation of regulations and behaviours to assist regulators achieving positive environmental outcomes.
- Linking the costs of light industrial production, to that paid by consumers (user pays) and that borne by the community (pollution externalities), for use in Cost Benefit Analysis and prioritising the regulatory approach.
- Linking 'regulatory fairness' to the maintenance of a level SME competitive playing field, due to the dominance of the economic framework created by a capitalist economy.
- Linking the purpose of regulation to the protection of social and environmental values, and the creation and maintenance of a competitive economic level playing field.
- Linking the purpose of using the behaviour change approach, to assisting businesses to resolve their conflicts between Individual rights and benefits in profit making, and community rights and benefits in the protection of ecosystem services.
- Identifying regulatory and systemic failures that lead to the poor development of SME social norms for quality environmental management.
- Providing recommendations for the integration of information technology, SME environmental management auditing, and adaptive management for cost effective evaluation and achievement of landscape scale environmental outcomes.
- The final report for this project is currently being prepared for publication.

Kindly funded by the Waste Management Authority's Strategic Waste Initiatives Scheme, the Department of Water and the City of Canning. Supported by SERCUL and Murdoch University.

Searching for Mussels



Measuring the Size of Dead Mussels



Longneck Turtle Hatching Found During Macroinvertebrate Sampling



URBAN WATERWAYS RENEWAL MONITORING AND RESEARCH

Coordinated by Dr Judy Fisher and SERCUL staff

AQUATIC MACRO INVERTEBRATES SURVEY

The Bannister Creek and Bickley Brook pre-restoration baseline data collection for measuring habitat diversity and aquatic macro invertebrate's community was completed as part of a thesis for UWA honours student, Bonita Clark. The survey and thesis is available from SERCUL.

Post restoration surveys will be conducted to allow for pre and post restoration comparison and provide SERCUL, and the associated stakeholders, with highly valuable measurable data and information on ecosystem recovery time, habitat formation, and the sustainability links for the renewed waterway.

FRESHWATER MUSSELS SURVEY

A study was undertaken by Murdoch University Fish Health Unit's PhD candidate, Michael Klunzinger, to assess freshwater mussel populations within the UWR project sites.

Unfortunately, there were no live freshwater mussels (*Westralunio carteri*) found at any of the sites selected for survey. Numerous dead, large freshwater mussel shells were found in the Canning River/Bickley Brook confluence section with salinity being a recent and major factor in the mortality of these mussels.

BIMONTHLY BIRD SURVEY

At the commencement of the Urban Waterways Renewal project a group of three dedicated Birdlife Australia volunteers have been conducting bimonthly bird surveys at six of the restoration sites. The volunteers have committed themselves to specific sites enabling a long term study of the trends resulting within the restored areas.

Due to these volunteers, the monitoring of these sites can be continued even when the project funding is complete. The outcome of such an effort will increase our understanding of these works, resulting in continuing improvements. To date, these volunteers have conducted 47 surveys across the six project sites.

LANDSCAPE CHANGE PHOTO MONITORING

SERCUL staff have set up landscape change photo points within all project sites. We continue to capture photos and video as the sites change every six months. We also photograph major rain events and any spill or pollution events that occur in all project sites.

URBAN WATERWAYS RENEWAL MONITORING AND RESEARCH

Coordinated by Dr Judy Fisher and SERCUL staff

TERRESTRIAL MACRO INVERTEBRATE SURVEY

David Knowles from Spineless Wonders completed an invertebrates and herpetofauna (reptile) survey within some of the UWR sites between October and November 2011.

The survey consisted of a three day, three night snapshot of invertebrate and herpetofauna diversity. A comprehensive colour photographic index of more than 400 species has been provided to SERCUL.

The survey highlighted a significant threat to the Bannister Creek Reserve, being the presence of the feral Argentine Ant which was not present in previous surveys done in 1999.

Argentine ants (*Linepithema humile*), are a very dominant feral species that can kill native ants and other species which will remove important pollination invertebrates from the reserve making restoration an on going revegetation process without the possibility of natural sustainability. Management investigation and further research is being sought in partnership with the City of Canning and Department of Agriculture.

TRACK AND TRACE HYDROCARBON SURVEY

Stormwater pits within the Kelmscott industrial area are being monitored for hydrocarbon contamination by installing Mycelx hydrocarbon detection and management pads. The pads discolour with increases in absorption of hydrocarbons from surface water runoff or illegal dumpage of waste.

The trend analysis of visual inspections showed high (7) and medium (26) oil discoloration in half of the stormwater pits being investigated. Further investigation is being pursued by the Department of Environment and Conservation Pollution Prevention and Response Unit and the City of Armadale.

VEGETATION MONITORING

The vegetation surveys within each project site have been undertaken along several transects. This involves photo monitoring, canopy density, and randomised quadrature surveys. The surveys have been conducted to collect information on the presence of plant species, the cover of the species and the vegetation's structural composition.

These assessments were undertaken prior to works commencing at each site and will be repeated as each project progresses providing the data for a rigorous scientific assessment of the restoration projects.



Tony Installing
Pitfall Trapline November 2011



Spot Jacksnail Bubeetle, *Astraeus flavopictus*



Stormwater Pits Inspection of Mycelx Pad

W F DAWSON & ASSOCIATES

Chartered Accountants



Chartered
Accountants

INDEPENDENT AUDITOR'S REPORT TO THE MEMBERS OF SOUTH EAST REGIONAL CENTRE FOR URBAN LAND CARE INC (SERCUL)

Scope

I have audited the financial statements of the SERCUL which has been classified as a non general purpose account, for the year ended 30th June 2012.

SERCUL's Management Committee are responsible for the preparation and presentation of these financial statements and the information they contain. The committee determines the accounting policies used so as to meet the needs of the members. I have conducted an independent audit in order to express an opinion of them to the members.

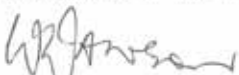
I disclaim any assumption of responsibility, for any reliance on this report or these accounts, to any person other than the members, or for any purpose other than for which they were prepared.

My audit has been conducted in accordance with Australian Auditing Standards to provide reasonable assurance as to whether these accounts are free of material misstatements. My audit procedures include an examination, on a test basis, of evidence supporting the amounts shown in these accounts. These tests have been undertaken to form an opinion as to whether, in all material respects, these accounts are fairly presented.

My audit opinion expressed in this report has been formed on this basis.

Audit Opinion

In my opinion, the financial statements present fairly the operating result of SERCUL for the 2011/2012 year and its financial position at 30th June 2012.


Signature of Auditor:
Name of Auditor: **WARREN F DAWSON**

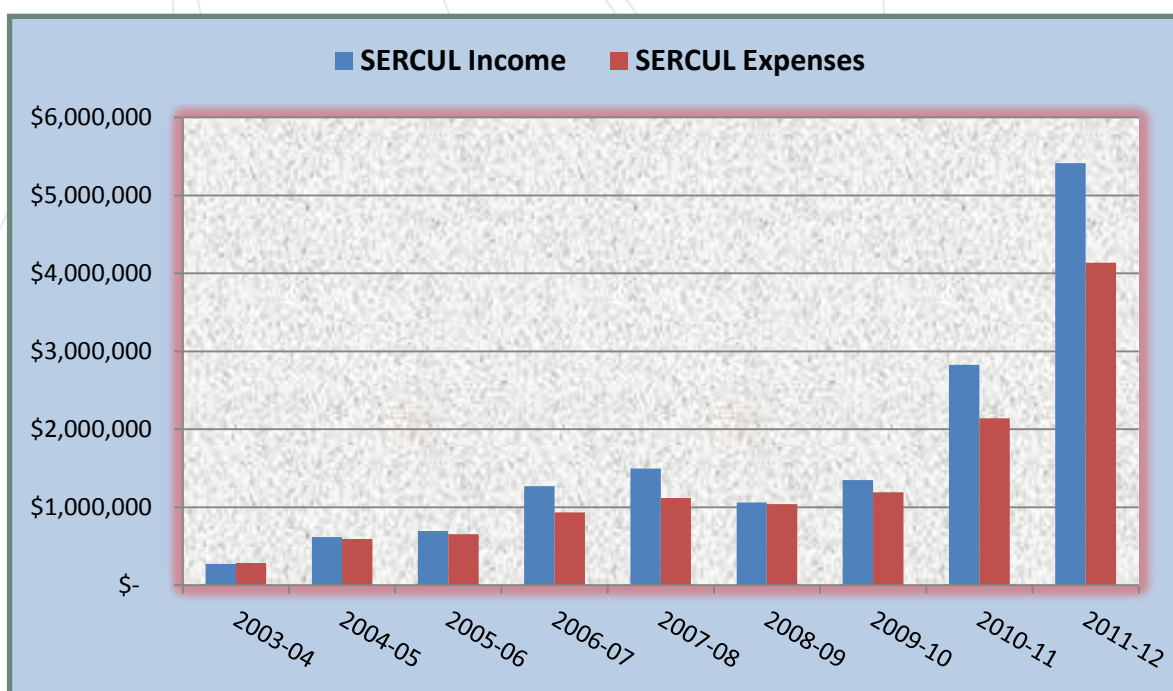
2nd August 2012

Principal: Warren F Dawson ACA ACIS
Level 2, 43 Cedric Street, Stirling WA 6021
Correspondence - PO Box 2063, Churchlands WA 6018
Telephone: (08) 9207 1977 Facsimile: (08) 9207 1410 Mobile: 0411 809 748
A.B.N.: 30 802 594 173
Email: warrendawson@gmail.com
(Liability limited by a Scheme approved under Professional Standards Legislation)

NINE YEAR PROGRESSION OF ACTUAL CASHFLOW 2003–2012

Over the 2011–2012 financial year SERCUL received \$5 412 897 in income and incurred expenses totalling \$4 138 092.

These figures have considerably increased from previous years. The Urban Waterways Renewal Projects account for a large proportion of the vast increase in turnover during the past two years. However, since inception, without the inclusion of the UWR projects, SERCUL has achieved a steady 10–20% annual increase in turnover. It is expected that the business turnover will return to this more steady business growth continuum after completion of the next financial year, unless new funding for the extension of the renewal of urban drains is achieved.



During 2012–13 and onwards, SERCUL will be seeking to expand the delivery of 'user pays' NRM services to the community. This will give Local Governments, Community Groups, State Agencies, Private Business and Local Landholders the opportunity to approach SERCUL for additional expert NRM assistance and access to a trusted NRM service delivery program. Some of the services available currently are:

- Native vegetation mapping, revegetation design including species selection, bulk plant purchase and planting.
- Weed mapping, planning and management in drains, waterways, rivers, bushland, high conservation areas and restoration planning and implementation.
- 'Drains to Living Streams' development, Water Sensitive Urban Design, river restoration, stormwater drainage site management, repair and rehabilitation, stormwater basin rehabilitation and remediation of soils.
- Water quality monitoring, sampling, planning for sampling, trend analysis and useful recommendation reporting.
- NRM education, NRM skills training, Canoeing on the Canning, in house environmental education, Fertilise Wise Fertiliser Training, local plants advice, river restoration training.
- Community group development in new estates.

9:48 AM
30/10/12
Accrual Basis

South East Regional Centre for Urban Landcare
Balance Sheet
As of June 30, 2012

	<u>Jun 30, 12</u>
ASSETS	
Current Assets	
Chequing/Savings	
Bendigo Term Investment 1366413	2,054,248
Bendigo working a/c 136248010	190,576
BendigoTerm Inv. 141340877	133,467
Capacity Builder Accou143399459	378,360
Petty Cash	147
Petty cash - PAG	30
Total Chequing/Savings	<u>2,756,828</u>
Accounts Receivable	
Accounts Receivable	136,538
Total Accounts Receivable	<u>136,538</u>
Total Current Assets	<u>2,893,366</u>
Fixed Assets	
Computer Equipment	16,020
Motor Vehicle at cost	45,868
Office Equipment	21,107
Plant & Equipment	53,313
Total Fixed Assets	<u>136,308</u>
TOTAL ASSETS	<u>3,029,674</u>
LIABILITIES	
Current Liabilities	
Other Current Liabilities	
Grants in advance	189,987
Payroll Liabilities	40,951
Provision for LSL and AL	112,162
Tax Payable	-38,089
Total Other Current Liabilities	<u>305,010</u>
Total Current Liabilities	<u>305,010</u>
TOTAL LIABILITIES	<u>305,010</u>
NET ASSETS	<u>2,724,664</u>
EQUITY	
Retained Earnings	1,466,939
Net Income	1,257,725
TOTAL EQUITY	<u>2,724,664</u>

8:44 AM
04/09/12
Accrual Basis

South East Regional Centre for Urban Landcare Profit & Loss July 2011 through June 2012

	Jul '11 - Jun 12
Ordinary Income/Expense	
Income	
Admin-Service Fees	265,129
Admin In	5,315
ALCOA Foundation Grant-219825	196,580
Anvil Way-Water Corporation	13,785
Bannister Creek Res Mgmt Plan	0
Beckenham Memorial Park.	5,000
CAG11-00037/1 B Creek Wetlands	19,950
CAG11-00132 Wireless Hill Res.	17,150
CFOC	150,000
COC Landcare	50,000
CRRP Post Fire Research	357
Donations and income	155
DPI-salary in	54,552
Employment Insurance	15,608
ENV-Clean Drains River Gains	696
ENV-F/water Fauna Research-Book	2,723
ENV-FO Wireless Hill DEC	12,328
ENV-FO Wireless Hill SALP	8,840
ENV-Lake Claremont.	4,110
ENV-Liege St-C of Canning	19,760
ENV Wharf St-C of Canning	2,210
ENVMaida Vale Res. Weed Mapping	1,909
Fertiliser Training	4,818
GVEHO 2010-2011	2,300
HR & Training.	24,890
Interest received	165,863
Kaarraikin Centre	153,205
Laggards-Wages Insurance Admin	42,300
Lotterywest-Mussel Project	13,097
Lotterywest-Staff & Vol. Dev	19,659
LSL Liability.	15,309
PAG operating costs	13,292
PAP Extension Turf ManagerTrain	50,000
Project Management	619,567
Project supervision	11,684
Reimbursements	14,205
SALP08S12-CR Post Fire Recovery	22,047
SALP09S12-Tom Bateman	18,182
Shire of Kalamunda	5,100
Slab Gully	18,824
SNRM 10011-Canning River	50,350
SNRM 11034-C River Foreshore	25,000
SNRM10014-Nicholson Rd Bushland	43,585
SP WQ Data Analysis	17,460
SRT Grants	397,000
Stencilling Paint	0
Tom Bateman Management Plan	6,000
Urban Renewal Projects	2,733,272
Vehicle operations	22,537
Water Corp. UWR	30,000
Water Quality Monitoring	0
Watsonia Control in CRRP	27,195
Whiteman Park WQM	0
Total Income	5,412,897
Gross Profit	5,412,897
Expense	
Admin	143,195
ALCOA Foundation Grant-219825.	10,106
Anvil Way-Water Corporation.	4,914
Anvil Way 11-12.	2,809
Anvil Way 2005 Expenditure.	6,226
Anvil Way additional plants.	1,435
Anvil Way Construction.	4,800

8:44 AM

04/09/12

Accrual Basis

South East Regional Centre for Urban Landcare Profit & Loss July 2011 through June 2012

	Jul '11 - Jun 12
Audit	2,100
Bank Service Charges	218
Beckenham MP On Ground.	17,818
BOS Comm Action Grant CFOC 2010	9,632
CAG11-00037 B Creek Wetlands	2,650
CAG11-00132 Wireless Hill Res	1,550
Canning River Fish Passage.	2,774
Centenary Pk Comp Basn Belmont	1,395
CFOC.	31,277
CRRP Post Fire Recovery.	55,389
DEC Comm Grant 09-Research.	5,000
Depreciation Expense	93,671
Employment Insurance.	20,811
ENV-Clean Drains River Gains.	247
ENV-FO Wireless Hill DEC.	16,072
ENV-FO Wireless Hill SALP.	22,100
ENV-Fwater Fauna Research-book.	14,913
ENV-Lake Claremont	900
ENV-Liege St-C of Canning.	14,546
ENV-Parrot Feather-BayswaterMD	170
ENV-W Hyacinth-Gibbs Rd Basin	86
ENV-Woodlupine.	4,287
ENV Wharf St-C of Canning.	2,340
GVEHO 10-11	2,300
Hester Park.	4,051
HR & Training	35,833
Junkbusters Inc	4,390
Kaarakin Centre	11,946
Laggards-Vehicle Operation Exp.	1,744
Laggards-Wages Ins Admin	43,351
LaggardsComputer equip software	50
Lake Copulup-Water Corp.	2,407
Leave entitlement provision	112,162
Lotterywest-Staff & Vol. Dev.	15,600
Lotterywest - Mussel Project	13,244
LSL Liability	16,870
Macroinvertebrate monitoring	473
Manley St Comp Basin.	3,800
Mill St Drain-Hydrocotyl	3,293
Mobile phone	3,499
PAG-oper costs	61,141
Payroll Expenses	1,183,301
Project Management.	29,708
Qantas Yule Brook	11,126
Reimbursement	13,414
Reimbursement-DPI	3,296
SALP 09-10 Canning River Tribs	212
SALP 09/10 WONS	3,623
SALP08S12 CR Post Fire Recovery	11,419
SALP09S12-Tom Bateman.	2,153
Shire of Kalamunda.	27,682
Slab Gully 2012-13	19,541
Slab Gully.	8,060
SNRM 10011-Canning River.	35,344
SNRM 11034 - C. River Foreshore	17,459
SNRM10014-Nicholson Rd B/land	29,474
SP WQ Analysis	1,654
Taro Project-C of G.	287
Tarun Ct Basin.	5,452
Travel	15,855
Urban Renewal Projects.	1,792,713
Vehicle operation expenses	42,700
Vellgrove Screening	17,591
Water Corp UWR	19,063
Watsonia Control CRRP	17,380
Total Expense	4,138,092
Net Ordinary Income	1,274,805

8:44 AM
04/09/12
Accrual Basis

South East Regional Centre for Urban Landcare
Profit & Loss
July 2011 through June 2012

	<u>Jul '11 - Jun 12</u>
Other Income/Expense	
Other Expense	
Asset purchases-Computers	4,680
Asset Purchases-Office equip	10,493
Asset Purchases - Plant & Equip	1,907
Total Other Expense	<u>17,080</u>
Net Other Income	<u>-17,080</u>
Net Income	<u><u>1,257,725</u></u>



 **SERCUL**
South East Regional Centre for Urban Landcare

69 Horley Road,
Beckenham, Western Australia 6107
Telephone: 08 9458 5664
Facsimile: 08 9458 5661
Website: www.sercul.org.au

STATEMENT BY THE MANAGEMENT COMMITTEE
SOUTH EAST REGIONAL CENTRE for URBAN LANDCARE (INC.)

In the opinion of the Members of the Committee;

(a) The accompanying Profit and Loss Statements is drawn up so as to give a true and fair view of the results of the Group for the year ended 30th June 2012.

(b) The accompanying Balance Sheet is drawn up so as to give a true and fair view of the state of affairs of the Group as at the end of that period.

(c) At the date of this statement there are reasonable grounds to believe that the Group will be able to pay its debts as and when they fall due.

The Accounts of the Group have been prepared in accordance with applicable Australian Accounting Standards.

Signed in accordance with a resolution of the Committee.


Treasurer *Am. Bely.*

Date 20th September 2012


Chairperson *Patricia Hart*

Date 20th September 2012

BOORAGOON AND BLUE GUM LAKES RESTORATION

Located on Leach Hwy and off Moolyeen Road in Brentwood/Booragoon.

A new Friends of Booragoon and Blue Gum Lakes group has formed and SERCUL have been able to attract funding for Blue Gum Lake to undertake weed control and restoration activities with the group and the City of Melville.

These lakes have been under extreme pressure from urban stormwater nutrient loading, a serious lack of groundwater and an increase in bird roosting. Major funding is needed for restoration and investigation of the hydrographic influences.

Kindly funded by the Australian Governments Caring for Our Country Program – Community Action Grants.

BULL CREEK WATER QUALITY IMPROVEMENT PLAN AND WATERWAY RESTORATION

Located in Bull Creek, the waterway restoration site is directly behind Rossmoyne Senior High School. End of catchment restoration is occurring at Spinaway Crescent and just off Leach Hwy.

The WQIP will be finalised soon and SERCUL will collaborate with all the stakeholders to actively restore the main waterway and it's associated wetlands and basins. Major weed removal is required and a strategic approach to the weed removal program will be developed.

Kindly funded by the Australian Governments Caring for Our Country Program – Community Action Grants.

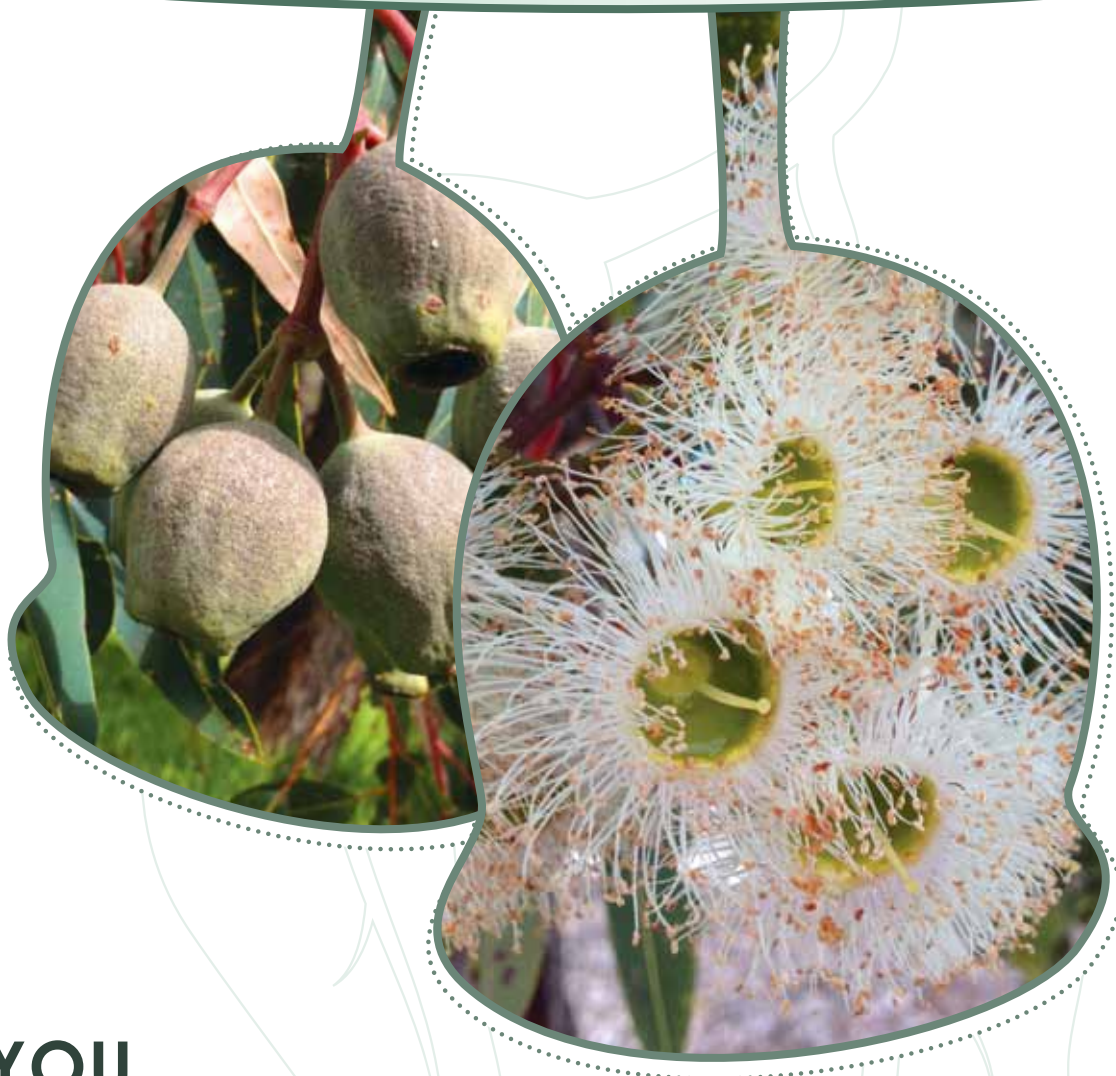
TOM BATEMAN AND BANNISTER CREEK RESERVE MANAGEMENT PLANS

These management plans form a critical part of the implementation of the Bannister Creek Catchment Water Quality Improvement Plan. This planning process is funded by the Swan River Trust to improve the quality of water entering the Canning River via the Bannister Creek catchment.

SERCUL will coordinate the development of the plans and are currently seeking input. The plans should be completed by the end of the next financial year.

Kindly funded by the Swan River Trust and the Cities of Canning and Gosnells.





THANK YOU

The South East Regional Centre for Urban Landcare Inc. Committee and Staff sincerely thank all the Community Groups, Non Government Organisations, Volunteers, Local Government Authorities, State and Australian Government Departments and Private Business project partners for your contribution towards the care and protection of the Natural Resources of the Swan Region during the 2011–2012 year. We look forward to continuing our partnerships in 2012–2013 to achieve an even more sustainable approach to Natural Resource Management in Perth, Western Australia.

Good luck for 2012–2013

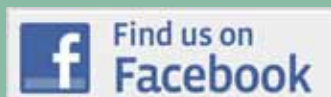
The South East Regional Centre for Urban Landcare acknowledges and sincerely thanks the following Australian Government Departments, State Government of WA Departments, Natural Resource Management Organisations, Private Businesses, Local Governments, and Community Groups for their financial and in-kind contributions which has led to the success of our project delivery for the 2011–2012 year.





South East Regional Centre for Urban Landcare

69 Horley Road
Beckenham, WA
Ph: (08) 9458 5664
Fax: (08) 9458 5661
julierobert@sercul.org.au



www.sercul.org.au