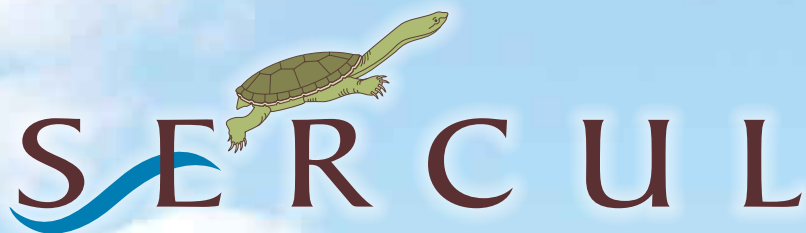


ANNUAL REPORT 2009 - 2010



South East Regional Centre for Urban Landcare



CONTENTS

<u>Achievements and Highlights 09-10</u>	<u>3</u>
<u>Feedback</u>	<u>4</u>
<u>SERCUL Committee 09-10</u>	<u>5</u>
<u>SERCUL Constitution</u>	<u>6</u>
<u>NRM Organisational Structure</u>	<u>7</u>
<u>From the Chair</u>	<u>8</u>
<u>From the CEO</u>	<u>9</u>
<u>SERCUL NRM Program Areas</u>	<u>10</u>
<u>Phosphorus Awareness Project</u>	<u>11</u>
<u>Fertilise Wise and North Forrestdale Projects</u>	<u>12</u>
<u>Seminars, Workshops and Events</u>	<u>13</u>
<u>Water Quality Partnership</u>	<u>14</u>
<u>Drainage Nutrient Intervention Program (DNIP)</u>	<u>15</u>
<u>Canning River Restoration and Natural Diversity</u>	<u>16</u>
<u>City of Canning Community Landcare</u>	<u>17</u>
<u>Invasive Weed Threats</u>	<u>18</u>
<u>Bannister Creek Catchment Group</u>	<u>19</u>
<u>Two Rivers Catchment Group</u>	<u>19</u>
<u>Armadale Gosnells Landcare Group</u>	<u>20</u>
<u>Sustainable Production Activities</u>	<u>21</u>
<u>Beckenham Open Space and Homestead</u>	<u>22</u>
<u>Environmental Services</u>	<u>23</u>
<u>Volunteer Coordination</u>	<u>24</u>
<u>Administration and Community Capacity</u>	<u>25</u>
<u>Auditors Report and Financial Reports</u>	<u>26-32</u>
<u>New Projects</u>	<u>33-35</u>
<u>New Staff and Directions</u>	<u>36</u>
<u>Thank You</u>	<u>37</u>
<u>Acknowledgements</u>	<u>38-39</u>



ACHIEVEMENTS AND HIGHLIGHTS OF 2009 - 2010



Successfully gained Lotterywest funding to develop and implement a Freshwater Fauna Education Project in partnership with Murdoch University Fish Health Unit

Gaining approval of the Urban Waterway Renewal Program funding from the Australian Government

State & Federal Govt NRM Grants = \$935,441

Local Govt Grants = \$184,087

Other Project \$ Attracted = \$24,608

Volunteer contribution > 13,013.5 hrs

\$ Value of Volunteering \$24.09/hr

\$ Total value of volunteering > \$313,495.21

Plants Planted = 202,598

86 Waterway sites sampled and 211 samples were analysed in the Perth Region

17,441 > People received education, via direct information or on ground contact



TRCG National Tree Day - Greenfield Street Bridge



SERI Conference field trip



Fertilise Wise BBQ Celebration



Canoeing on the Canning

FEEDBACK

FEEDBACK FROM PEOPLE ASSOCIATED WITH SERCUL DURING 2009-2010

Feedback comments from the Fertilise Wise survey responses:

"Doing a great job and I encourage any implementation that is environmentally sound"

"Doing a great job, nice to see SERCUL care about what goes on our gardens & into our waterways"

"Thank you for the opportunity of planting out some trees and for giving us the opportunity to learn this skill" (Christian Homeschoolers Haven)

"To all staff involved with putting our newsletter onto the website. You are wonderful and the website looks great. A great big thanks" (Friends of Marry Carroll Park)

"I want to thank you for accepting my work placement and allowing me to join in on helping to decrease the impact of surrounding development in the environment. I have enjoyed learning new skills and meeting new people. The experience of being in the work industry outside of school has been very exciting and educational for me" (Work experience student, Southern River College)

"I would like to say thanks for this wonderful experience here at SERCUL. I have really enjoyed my time at SERCUL it was very educational and fun. By coming here it has allowed me to pursue my passion for the environment" (Work experience student, Southern River College)

I would sincerely like to congratulate your business for being part of the 'Switched on business and Industry' project. Your participation is proof of your business' awareness of, and commitment to, environment and financial sustainability - helping green your bottom line. (Switched on business and industry)



SERCUL COMMITTEE 2009 - 2010

Executive Committee

Chair	Mrs Pat Hart
Vice Chair	Mr Marc Lane
Treasurer	Mr Cam Clay
Secretary	Position Vacant

Community Committee Members

Dr Margaret Mathews
Mr David James
Mr Brian Aldrich
2 Positions Vacant

State Government Agencies and Local Government Authorities Represented

Swan River Trust
Department of Planning and Infrastructure (WAPC)
City of Armadale
City of Belmont
City of Canning
City of Cockburn
City of Fremantle
City of Gosnells
Town of Kwinana
City of Melville
City of South Perth
Town of Victoria Park

STAFF EMPLOYED DURING 2009-2010

Regional NRM Coordinator: Julie Robert
Financial Administrator: Sandy Wainwright
Administration Assistant: Bonita Clark
NRM-Education (PAP): Amy Krupa
NRM-DNIP: Tom Atkinson
NRM-Water Quality: Ana Terrazas and Monica Estrada
NRM- Biodiversity/River Restoration: Glen Byleveld
NRM- Phd researcher: Paul Lock
NRM-Landcare: Melinda Snowball
NRM-Landcare: John Maliunas
NRM-Landcare: Tracy Evans
NRM-Landcare (Trainee): Jake Usher
NRM-Volunteer Coordinator: Monica Estrada



SERCUL staff and committee 2009

SERCUL's AGM 2009

Knowledge Management Workshop

Fire Safety Training at SERCUL

SERCUL CONSTITUTION

Vision

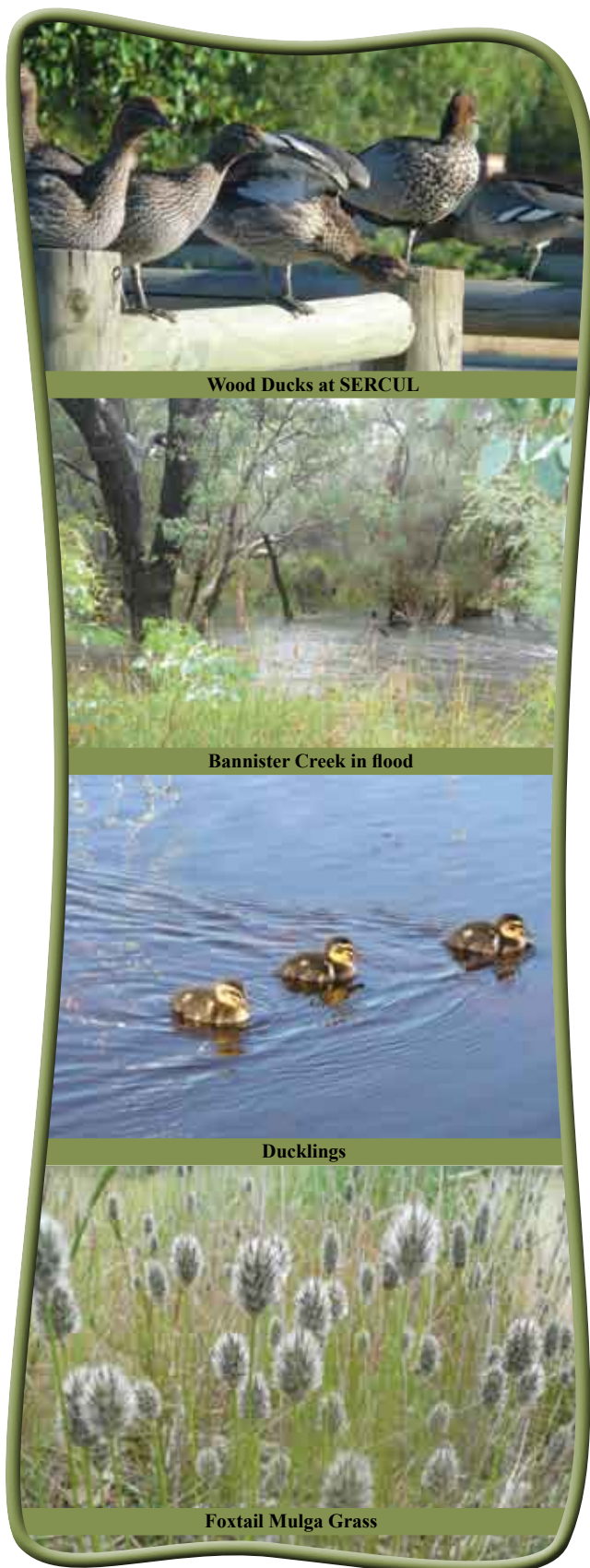
To have, as a given, the Natural Resources of the South Region of Perth managed in a healthy and sustainable manner by all stakeholders for future generations.

Mission

The aim is to use integrated natural resource management to develop cultural change in how the community views and interacts with the environment while promoting and actively participating in, the improvement of the health of waterways and other ecosystems within the South Region.

Objectives

1. Identify priority Natural Resource Management issues in the South Region in partnership with Local Government, State Government and Industry.
2. To ensure biodiversity within the South Region is monitored, protected and enhanced.
3. Develop and assist community, State and Local Government in the coordination of Natural Resource Management in the South Region.
4. Support and encourage the implementation of best management practice of Natural Resources within the South Region.
5. Recognise and embrace Aboriginal, Cultural and Natural heritage.
6. Foster research on matters relating to the South Region's Natural and Cultural heritage.
7. Work in partnership with Local Government, State Government and industry to educate the wider community to protect our Natural Resources.
8. Support and encourage the formation of community environment groups.
9. Administer the South Regional Urban Landcare fund to promote the objectives and outcomes of the Association.



Wood Ducks at SERCUL

Bannister Creek in flood

Ducklings

Foxtail Mulga Grass

THE NRM ORGANISATIONAL STRUCTURE IN PERTH

SERCUL is a sub-regional body that operates in the metropolitan and peri-urban areas of the Swan Catchment. The area covered takes in most of the southern and eastern suburbs of Perth and includes Dyarguu (the Canning River), the Southern-Wungong River and parts of Derbarl Yerrigan (the Swan River). This is shown in the map below:

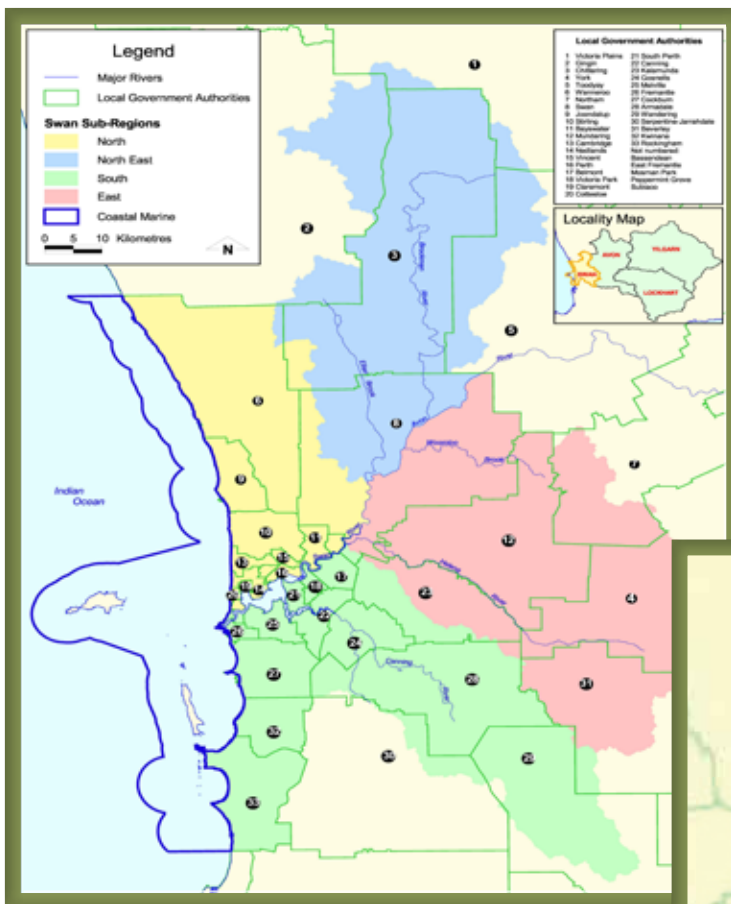


Figure 1: Division of the Swan NRM Region into five Sub regions

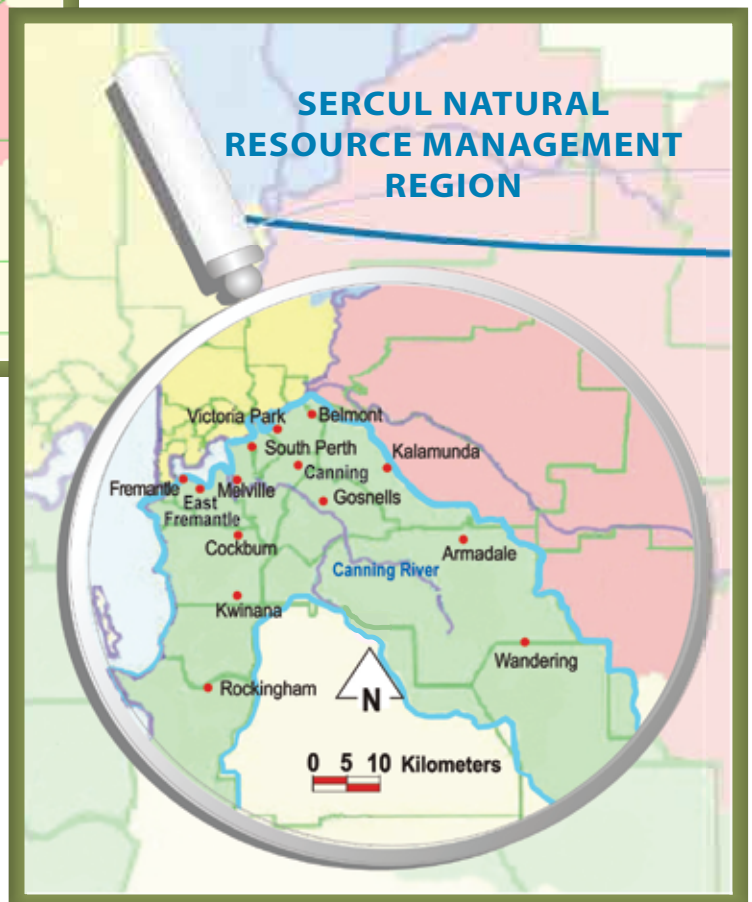


Figure 2: South Sub Region

The South Region is defined as consisting of those parts of the Cities of Armadale, Belmont, Canning, Cockburn, East Fremantle, Fremantle, Gosnells, Kwinana, Melville, Rockingham, South Perth, Shire of Kalamunda and Town of Victoria Park which fall within the boundary of the Natural Resource Management Region of the Swan Region.

FROM THE CHAIR - Pat Hart



It has been an extremely busy year for all at SERCUL. The finalisation of the Urban Waterways Renewal Project having the major focus. It has been just over three years since the Federal election funding component was approved and has taken until this month for the formal agreements to be signed between all key stakeholders and the official launch taking place. A long time coming but now we set forth on a very exciting and challenging project that will, I believe, bring the best out in all the many partnerships we have to work with in the projects implementation. The added component of evaluating the program through ongoing scientific monitoring will, I believe, prove to be a model for other projects to benefit from.

I recently reviewed the history of SERCUL and its original organisation the 'Canning Catchment Coordinating Group' which came into being in 1995. The issues that were identified then are still the same and still very relevant to the health of our Canning Catchment, but fortunately through the Swan River Trust and other State and Local Governments they have

now been formally recognised and some steps identified to address them. It is still a very slow process for real changes to be made in the protection of our precious natural environment and with climate change making a real impact one can only hope that this lack of urgency is turned around. The key focus of SERCUL's role – the Canning River and all its relative environs are without a doubt in real crisis. The Department of Water has advised that due to one of the driest rainfalls ever recorded the amount of water released into the Canning River over this coming summer is to be reduced by 50%. The need to advise and educate all licence and riparian users of the need for severe constraint with their rights for water extraction is paramount if the biodiversity of the upper section of the Canning River is to be saved during these drought conditions. All properties bar one have access to scheme water.

It was said in the past that a key element of solving environmental problems is 'Practising hope rather than despair and that hope is not blind optimism but recognises the depths of the problems and refuses to accept defeat'. This is without a doubt the ethos of all associated with SERCUL. I continue to feel privileged to be associated with such committed and dedicated staff, community members and others who continue with us on our journey to ensure the Canning Rivers health is restored for future generations.

I wish to thank all our stakeholders and partners who have assisted SERCUL in many ways throughout the year for their ongoing support. In particular the Swan River Trust whose core funding is the lynch pin to our existence, and to the WAPC for their ongoing support for our heritage homestead and the amazing surrounding area. To all our staff and volunteers whose outstanding efforts and dedication never cease to amaze me and to all the Friends Groups and other key community organisations, I say thank you on behalf of all those who care very deeply for the ongoing health of our Canning River and all our natural environment that lies within our Canning Catchment.

PAT HART

November 2010

FROM THE CEO - Julie Robert



The SERCUL staff team and committee have had a year of growth and change, with the development of exciting new waterway restoration projects, the advancement of the Fertilise Wise Education Program, the development of a Volunteer Management system including a detailed management manual, and the implementation and completion of numerous NRM projects.

The NRM on ground project delivery from SERCUL has again been very successful with the planting of more than 202,598 local native plants and many hundreds of hectares of weed control across the region. The development of 11 new Australian Government funded Urban Waterway Renewal Projects and State NRM projects in partnership with the Dept. of Water, Swan River Trust and Local Governments has dominated my role as I have sought to prepare the SERCUL team for a sudden increase in workload in the years of 2010-

2012. It has been a pleasure for SERCUL to continue to assist Local Government Authorities and State Government Agencies to repair and maintain their restored water basins, waterways and bushland reserves.

The NRM Education Program has again been delivered with resounding success. The Fertilise Wise fertiliser endorsement program was born and the first Fertilise Wise endorsed fertiliser products became available to the public in our effort to reduce the impact that fertiliser has on our rivers in WA. SERCUL have developed a Nutrient Education Program across two of the North Forrestdale new development estates where we have implemented a scientific evaluation of the most appropriate methodology that can be used by Local Government to effect nutrient use reduction in new developments.

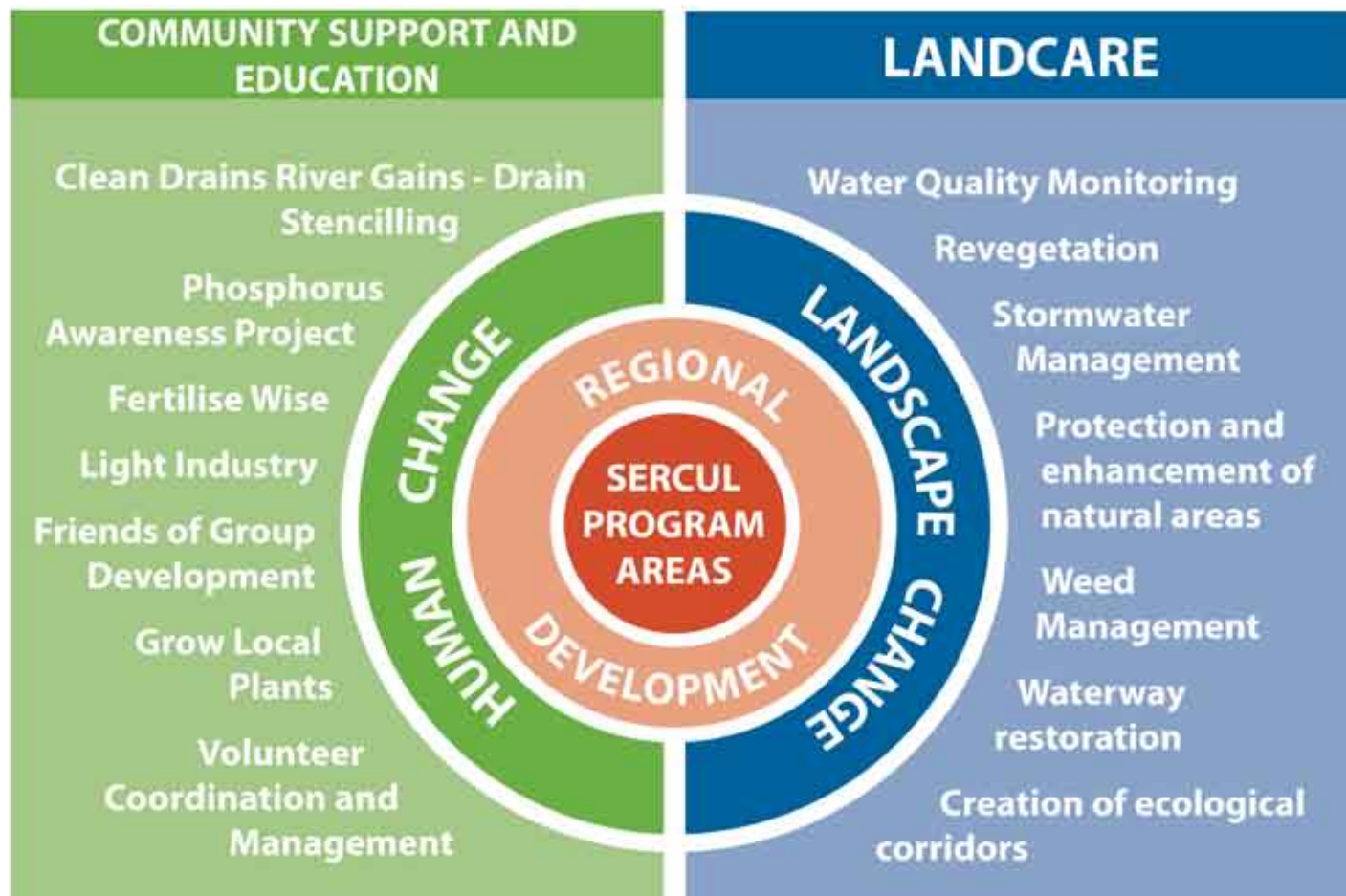
The SERCUL staff and associated project partners have made many presentations to conferences including the UWA Stormwater Science Seminar and the International Wetland Conference at Cockburn Wetland Centre. SERCUL also partnered with Murdoch University to successfully develop, coordinate and implement the first Urban Ecology Symposium which was held in August of 2010. The networks of connection made through SERCUL project developments and at these conferences will enable SERCUL to strive to facilitate a more scientific approach towards ecological restoration works now and into the future.

The 2009-2010 year has brought forth further growth in the care, repair and improved management of the NRM assets in the SERCUL region. With that growth new staff have been employed at SERCUL who will be working closely with stakeholders across many land management boundaries to facilitate the on ground, educational and social changes that need to occur. We look forward to supporting the cross transfer of knowledge and training into the organisations, agencies, businesses and community groups who diligently share with us in the planning, implementation and development of NRM projects and programs.

I thank all of our NRM partners recognised in the last few pages of this report for supporting and working with SERCUL to ensure that the NRM assets of this region are indeed restored and managed appropriately for our future generations. I also recognise and sincerely thank the SERCUL Chairperson, Pat Hart, the SERCUL committee and all the volunteers for their dedicated support and commitment to the environment throughout the year.

Julie Robert November 2010

SERCUL NRM PROGRAM AREAS



Canning River near Riverton Bridge

EDUCATION ACTIVITIES

PHOSPHORUS AWARENESS PROJECT

Coordinated by Amy Krupa

The Project is an education campaign for the general community educating them to decrease their nutrient outputs and thus algal blooms in the Swan & Canning River Systems.

DISPLAYS - 17 displays with over 5000 people spoken to

SCHOOL PRESENTATIONS - 127 presentations to over 4300 students from Kindy to Yr 12

SCHOOL PLANTING SESSIONS - 16,000 plants planted at 30 planting sessions, 1500 students, 1400 volunteer hours totaling \$33,600 volunteer value

COMMUNITY PRESENTATIONS - 38 presentations to 1000 people

LGA ANNUAL NUTRIENT SURVEY - 2010 survey sent in June. Have received 20 responses and report currently being written

SUPPORTED GROUPS WITH PROJECT RESOURCES - on 54 occasions

CANOEING ON THE CANNING - hosted four with 90 teachers and community members attending this full day professional development workshop

CATCHMENTS, CORRIDORS AND COASTS - on the organising committee and presented at this three day course attended by 15 participants

FERTILISE WISE PROJECT - >5400 of all five brochures distributed

GROW LOCAL PLANTS PROJECT - >4000 of all five brochures distributed

BROCHURE DISTRIBUTION - >18,800 Phosphorus Awareness Project items distributed

ARTICLES - about the Project in newspapers and newsletter on 17 occasions

EDUCATION NEWSLETTER - four per year to 250 schools

Kindly funded by the Swan River Trust's Healthy Rivers Program.



Canoeing on the Canning

Frog Pond

Riverton Primary School Bush Garden Planting

Catchments, Corridors and Coasts 2010

EDUCATION ACTIVITIES

NORTH FORRESTDALDE NUTRIENT REDUCTION CAMPAIGN

Coordinated by Paul Lock, Amy Krupa and Julie Robert

This campaign aimed to educate residents in four new developments - Arion, Vertu, Heron Park and Newhaven, in the North Forrestdale area, how to 'Fertilise Wise' and thus reduce nutrient inputs to the waterways around the developments.

FERTILISER VOUCHERS – directly mailed to 961 households with 16% collecting free fertiliser.

CELEBRATION BBQ'S – held two BBQ's in the estates with 77 households attending and receiving free giveaways including fertiliser.

POST INTERVENTION (EVALUATION) SURVEY – survey sent to 1286 households in the area. Had a 15% response rate.

STORMWATER SCIENCE SEMINAR – presentation at the seminar on the process of the education campaign and preliminary evaluation results.

FINAL REPORT – the post intervention survey results are currently being analysed and the final report written. The report will be presented to the City of Armadale with recommendations for continuing the campaign.

Kindly funded by tender from the City of Armadale

FERTILISE WISE FERTILISER ENDORSEMENT PROJECT

Coordinated by Paul Lock, Amy Krupa & Julie Robert

FERTILISER ENDORSEMENT – Stocktech's range of Shades of Green fertilisers were officially endorsed with the Fertilise Wise logo in June 2010.

FERTILISER COMPANY INTEREST – eight fertiliser companies have had preliminary meetings or have requested information about being Fertilise Wise endorsed.

PROMOTION - Fertilise Wise endorsement highlighted on nine segments of the Garden Gurus 'Battle of the Burbs' television program and on 'The Garden Gurus' television program, three editions of The West Australian's Habitat section, The West Australian's Westweekend Magazine, a radio interview on 720 ABC and in four local newspapers.



EDUCATION ACTIVITIES

SEMINARS, WORKSHOPS and EVENTS



PERTH URBAN ECOLOGY SYMPOSIUM

SERCUL, in partnership with Murdoch University, organised the 2010 Perth Urban Ecology Symposium at the Cockburn Wetlands Education Centre from the 25th - 27th August 2010.

With about 100 attendees, the symposium sought to provide a discussion of how to manage, conserve and restore the natural ecosystem fragments in urban areas of the Australasian region. The participants spent three days discussing the threats to urban vegetation and environments in Perth and elsewhere in the world including one day visiting bush and wetland rehabilitation sites across the city at: Bibra Lake, Tom Bateman Reserve, Kogolup Lake, Bold Park and City Beach.

SERI CONFERENCE

SERCUL hosted the field trip and provided lunch for the attendees of the SERI (Society for Ecological Restoration International) Conference in August 2009. More than 50 attendees toured wetlands and waterways from Waterford wetlands in South Perth, Living Streams in Bannister Creek Lynwood, to the Wungong River in Armadale, Tom Bateman in Beckenham, Brixton Street in Kenwick, finally lunching at SERCUL near the Yule Brook and then on to the Liege Street wetland in Cannington.

COMMUNITY SCIENCE TALKS

SERCUL commenced a community science-talk series on freshwater fauna, mussel's and banksia woodland restoration which were held at Piney Lakes and the Canning River Eco Education Centre. The talks were attended by 98 community people and we thank the presenters who donated their time to bring local scientific knowledge to our community. SERCUL will seek to continue this series in 2011 on a monthly basis. People wishing to participate or attend are encouraged to visit the SERCUL website to view information for the next science talk.



SERI Conference field trip - Liege Street

Perth Urban Ecology Symposium

Perth Urban Ecology Symposium - Field Trip

Freshwater Marron in the Canning River

NRM PROGRAM ACTIVITIES

WATER QUALITY PARTNERSHIP

Coordinated by Ana Terrazas and Monica Estrada

The project has the aim to promote a cooperative approach to water quality monitoring (WQM) across the Perth Region. SERCUL's main roles, in conjunction with the Aquatic Sciences Branch of the Department of Water, are: assist stakeholders to assess their water quality data requirements; provide assistance in the preparation of sampling and analysis plans; undertake sampling and write annual reports.

Key achievements 2009-2010:

- Five water quality monitoring programs conducted: Bayswater Brook, Bennett Brook and Bull Creek Catchments, stormwater in the City of Belmont and North Forrestdale.
- Catchment specific trend analysis at Bayswater Brook and Bickley Brook Catchments.
- Input into the Swan River Trust local Water Quality Improvement Plans for Southern River, Bickley Brook and Canning Plain and into the Department of Water calibration models.
- Two other sediment snapshots were taken at Troy Park, Melville and Donneraille sump, South Perth.

Sites: 86

Samples analysed: 211

This project is funded by Perth Region NRM, through the Australian Government's Caring for our Country and the Local Government Authorities involved.

CLEAN DRAINS RIVER GAINS

Coordinated by Ana Terrazas and Amy Krupa

To raise awareness of the link between stormwater drains and natural waterways and to provide information to community on how they can make positive behavioral changes that will see a reduction in pollutants entering creeks, lakes, rivers and wetlands.

Drain Stencilling - More than 181 All Saint College students and teachers plus other schools and volunteers contributed 406 hours stenciling drains and dropping brochures around Palmyra, Bateman, Kardinya, Morley and Canning Vale.



Water quality sampling at Bayswater Brook

Water quality sampling at Forrestdale lake

Bennett Brook Sampling Site

Students Drain Stencilling

NRM PROGRAM ACTIVITIES

DRAINAGE NUTRIENT INTERVENTION PROGRAM

Coordinated by Tom Atkinson

WHARF STREET WETLANDS PROJECT

Wharf St Drain Catchments, DNIP funded, in its 3rd year of implementation

Revegetation almost complete excepting concerns over subsurface wetland pH and adjustments to vegetation to address community concerns. Activities included planting, weed control, monitoring and project coordination. Plant survival and revegetation outcomes satisfactory.

Total plants planted: 6,836

Total volunteer hours: 180

Equalling \$4,320 worth of labour

LIEGE STREET WETLAND PROJECT

Liege and Cockram St Drain Catchments, DNIP funded, in its 6th year of implementation

In its sixth year of implementation the maintenance program outcomes continue to progress well with only limited exotic species within revegetated areas. The wetland vegetation coverage is still well below specification. A research project is to be undertaken with Murdoch University in late 2010 to investigate the utility of lowering water depths to assist wetland plant to survival.

Total plants planted: 492

WATER QUALITY MONITORING

Assisted the Department of Water with monthly water quality monitoring for the DNIP sites.

OTHER DNIP PROJECTS:

- **Manley Street Compensation Basin** - City of Canning
- **Bickley Rd Compensation Basin** - City of Gosnells
- **Centenary Park Wetland** - City of Belmont
- **Tarun Court Compensation Basin** - City of Canning
- **Anvil Way Compensation Basin** - City of Canning

In partnership with the Swan River Trust and Local Government Authorities



Wharf Street Wetlands

Wharf Street Wetlands

Dr Jane Chambers sampling at Liege Street Wetlands

Liege Street sediment sampling

NRM PROGRAM ACTIVITIES

CANNING RIVER RESTORATION NATURAL DIVERSITY SOUTH PROJECT

Coordinated by Glen Byleveld

CANNING RIVER PROGRAM

This project involves the identification and prioritisation of critical habitat areas within the Canning River System and on-ground works to address key threats to those assets.

This year works have focused primarily on the control of invasive weeds including Hydrocotyle Ranunculoides, Taro, Sagittaria, Watsonia sp. and Weeds of National Significance (WONS) including Blackberry sp. and Bridal Creeper.

Sites include Yule Brook, Goolmarup Foreshore, Mckenzie Grove Weir, Wilson Lagoon, Canning River Regional Park, Mill Street Drain and Welshpool Basin.

NATURAL DIVERSITY SOUTH PROJECT

The Natural Diversity project focuses on the protection of Threatened Ecological Communities, threatened species, Ramsar Wetlands and WONS in accordance with the Caring for our Country Business plan. The project scope has been extended beyond the Federal targets to also address more locally significant threats and assets including Phytophthora Dieback, aquatic weeds and ecological surveys.

Project activities included:

- Supported the Black Cockatoo Preservation Society of Australia and Wildlife Australia
- Control of WONS: Blackberry (5ha), Bridal creeper (3ha) & eradication of Lantana (0.5ha)
- Support for 13 community groups
- Hollows monitoring project
- Kent Street Weir Ecological Assessment
- Queens Park Weed Mapping

Significant Events Included:

- Dieback Field day – Wireless Hill with 50 volunteers treated area = 5ha
- Dieback seminar to the Toyota 4WD Club 120 ppl
- EWAN community weed needs workshop

Total Volunteer Hours = 420hrs

These projects kindly funded through Perth Region NRM - supported by the Australian Government through the Caring for our Country Program.



NRM PROGRAM ACTIVITIES

CITY OF CANNING COMMUNITY LANDCARE

Coordinated by Melinda Snowball

HAWKESBURY LAKES AND VELLGROVE AVENUE WATERWAY

This project is in its fourth year of restoration with over 114,000 seedlings having been planted. Continual maintenance and infill planting is scheduled for the coming years.

Willeri Reserve which is stage three of this project has commenced with the City of Canning engaging a landscaping company to develop a plan for the site.

Total plants planted = 13,140
Total volunteer hours = 633
Equalling \$15,192 worth of labour

EDGEWARE LAKE COMPENSATION BASIN

The Edgeware Lake is a compensation basin situated in Lynwood, off Metcalf Road. The outflow from the lake enters the Canning River via the restored Litoria stream in the Canning River Regional Park.

This project started in 2008 and is now complete with approximately 14,000 plants having been installed. Weed control and maintenance will continue by the City of Canning.

Total plants planted = 11,452
Total volunteer hours = 222
Equalling \$5,328 worth of labour

CANNING COMMUNITY NEEDS

A report was produced following the 2009 Canning community needs workshop, this report was endorsed by the City of Canning Council and the council has also committed \$10,000 for the skill building development of community groups within the City of Canning

These projects were kindly funded by the City of Canning and the Swan Alcoa Landcare Program. Funding for the employment of a Community Landcare Officer was provided by the City of Canning.



Rostrata Primary School planting at Hawkesbury Lakes

Orb Weaver Spider at Vellgrove Avenue Waterway

AMC Corporate planting at Vellgrove

BP Corporate planting at Edgeware Lake

NRM PROGRAM ACTIVITIES

INVASIVE WEED THREATS

HYDROCOTYLE RANUNCULOIDES

The Two Rivers Catchment Group were successful in securing funding through the Department of Environment and Conservation community grants program to continue the monitoring and control the declared weed *Hydrocotyle ranunculoides* in the Canning River and its tributaries. The project funding has allowed the TRCG and SERCUL to refine management practices and test some new treatment methods which have proved very effective. The project has highlighted the need for an integrated approach to invasive species management and consistent funding for research, monitoring and management. The project is ongoing and preliminary results will be available 20th October 2010.

SAGITTARIA PLATYPHYLLA

SERCUL has discovered a more extensive spread of a declared weed in the Canning - *Sagittaria*. The weed has been present for many years in Hester Drain in Hester Park, Langford, but control has not been effective. A new infestation has since been located in Yule Brook opposite the homestead effectively doubling the weeds extent. SERCUL will continue to assist the LGA's and Dept of Agriculture to eradicate this weed. If anyone sees *Sagittaria* they should contact SERCUL, the Swan River Trust or the Dept of Agriculture.

SPARAXIS BULBIFERA - HARLEQUIN FLOWER

One of the major threats to the native flora and to the plant communities of the wetlands is invasion and competition from weeds such as *Sparaxis bulbifera* (Brown, K and Clarke, V.T. 2009). Another invasive South African herb, harlequin flower, enjoys a wide range of soil types and wet to seasonally inundated areas. This annual herb poses a major threat to Brixton Street Wetlands, but through the dedication and commitment of the Urban Nature crew at the Department of Environment and Conservation a monitoring protocol has been developed to guide control measures in this Threatened Ecological Community. For more information and management notes see <http://florabase.calm.wa.gov.au/browse/profile/1558>



CATCHMENT GROUPS

BANNISTER CREEK CATCHMENT GROUP

Total plants planted = 2,652

Total volunteer hours = 145

Equalling \$3,480 worth of labour



The reserve restoration is progressing steadily with the group meeting monthly to undertake site maintenance including weed management and planting.

Weed control is progressing in the Hybanthus to Adenia Rd section of the creek with a focus on Typha and Arundo grass removal.

BANNISTER CREEK PRIMARY SCHOOL PROJECT

The new school officially opened at the beginning of 2010. The Lotterywest project "Restoration of remnant woodland understory" which started in 2007 and was put on hold until the new school was complete has now been finished. The remaining 7,000 plants were installed in both sections of bushland on the school property as part of Schools National Tree Day.

Total plants planted = 7,000

Total volunteer hours = 600

Equalling \$14,000 worth of labour

Funded by City of Canning, Department of Environment and Conservation, Caring for Our Country Community Actions Grant and Lotterywest

TWO RIVERS CATCHMENT GROUP

Total plants planted = 15,270

Total volunteer hours = 616

Equalling \$14,784 worth of labour



Green Field Street planting days:

- Corporate Care Day - Swan River Trust, Department of Environment and Conservation and City of Canning - 25 staff = 100hrs
- Schools National Tree Day - 80 students = 240hrs
- National Tree Day - 92 vols = 276hrs

Funded by the Swan River Trust and Riverbank (DEC)



10 year old riffle in Bannister Creek

Bush Regen Day in Bannister Creek

Bannister Creek PS students planting in their bushland

National Tree Day at Greenfield Street

ARMADALE GOSNELLS LANDCARE GROUP



Armadale Gosnells Landcare Group (AGLG) is a community led group focusing on bushland regeneration, foreshore revegetation and building community engagement in an environmental capacity within the Cities of Armadale and Gosnells. To date AGLG has been very successful in obtaining external funding to implement these works. Some successes for 2010 include:

STAFF FUNDING - \$140,000 from the Cities of Armadale and Gosnells and Lotterywest

ON GROUND FUNDING - \$200,000 from the City of Armadale, Swan River Trust, Perth Region NRM, Western Australia Planning Commission, Water Corporation and the Department of Environment and Conservation

FACILITATED - over 50 events, workshops and activity days

SUPPORTED - 12 Friends Groups

WORKED - with over 21 different community and school groups

RESTORATION SITES - worked on 18 sites within the Cities of Armadale and Gosnells

PRODUCED - the 2010 AGLG Information Brochure

FINALIST in the WA Environment awards in two Categories

Total plants planted = >100,000

Total volunteers = 892

Total volunteer hours = 4670

Equalling \$112,080 worth of labour

Community Landcare Coordinator - Crystal Gillam

Community River Restoration Officer - William Hogg

Funding Bodies include: City of Armadale, City of Gosnells, Lotterywest, Perth Region NRM, Swan River Trust, Department of Environment and Conservation, Western Australia Planning Commission, Main Roads WA and Water Corporation.



SUSTAINABLE PRODUCTION ACTIVITIES

WINNING WITH THE LAGGARDS

A small factory environmental management support research project

Coordinated by Paul Lock - PhD Candidate

Winning with the Laggards is a PhD research project focused on improving light industrial Small and Medium Enterprise (SME) environmental management. This work builds on the Drain is just for Rain study conducted by SERCUL 2005-2008. The current research focuses on micro enterprises (0-5 employees) and seeks to understand how to work cooperatively with the poorest environmental management performers, to achieve beyond legal compliance outcomes. Social science in the fields of education, psychology, behaviour change and innovation theory are being drawn on to examine the social as well as technical aspects of environmental management.

- Approximately 50 visits have been made to businesses with obviously poor environmental management in the Canning Vale and Welshpool area.
- Most businesses were providing valuable conversation data but were reluctant to become involved in an environmental improvement plan that would have required 3 to 10 hours of their time over a 12 month period.
- The research design has now been changed to include one off 10 minute interviews with businesses reluctant to get involved in any other activity.
- The research is now a series of case studies with a stronger focus on qualitative data; those businesses willing to be interviewed, those willing to be involved in an environmental improvement program; the high achieving Green Stamp businesses, and stakeholders such as local and state government officers and legal professionals.
- 10 interviews have been conducted with local and state government officers and Green Stamp interviews are being organised through the Motor Traders Association.
- Conceptual diagrams and the 'theory' position of this research, constructed using the research literature and previous fieldwork, was reported at the 13th International River Symposium.

Funding is kindly provided by the Waste Management Authority's Strategic Waste Initiatives Scheme, the Department of Water and the City of Canning.



BECKENHAM OPEN SPACE AND HOMESTEAD

BECKENHAM OPEN SPACE and MEN OF THE TREES MEMORIAL GROVE PROJECT

Revegetation and weed management works have been the main priority for the SERCUL team, this year concentrating on the Yule Brook, and the Bowera and O'Dea, Men of the Trees sites. Weeding operations have been very successful involving both hand weeding and spraying to both prepare and maintain sites. The previous year's planting has also been very successful with an excellent survival rate.

Total plants planted = 10,501

Total volunteer hours = 821.5

Equalling \$19,716 worth of labour

YULEBROOK HOMESTEAD AND SHED CONSTRUCTION

Construction and fittings have been completed on the new landcare shed and the nursery compound area. An eco toilet has been installed along with bathroom and kitchen facilities.

Irrigation for the native garden has been installed and completed in time for an expected dry summer. With a mass planting of over 200 native plants within the garden it will promise many beautiful blooms for many years to come.

PERMACULTURE GARDEN

The construction of a retaining wall has created a great boundary for the permaculture garden. This will facilitate our plans of further development concerning disability access garden beds.

The gardens themselves have produced a variety of vegetables and herbs such as pumpkin, zucchini and parsley. Many of the seedlings for the garden have been sown by our wonderful volunteers from Panama Studios whose help is greatly appreciated. Ruah have continued to provide volunteers once a month to maintain the gardens, which is enjoyed by all those who attend.

This project is funded by the WA Planning Commission (WAPC), Men of the Trees, Bowra and O'Dea and SERCUL



Memorial Grove planting

SERCUL shed and plant enclosure

Limestone wall in construction

Veggies growing in the SERCUL permaculture garden

ENVIRONMENTAL SERVICES

Natural resource management services delivered by the SERCUL team have expanded this year to include the following projects:

TARUN COURT COMPENSATION BASIN

Located in the City of Canning

SERCUL has been undertaking a contract through the City of Canning involving weed control and maintenance of Tarun Court. The contract was completed in June 2010.

WIRELESS HILL

Located in the City of Melville

SERCUL has been contracted by the Friends of Wireless Hill Park to undertake weed and general maintenance in the Wireless Hill Park area. Work involves the management of mainly perennial veld grass (*Ehrharta calycina*) within the park and other seasonal weeds such as *Gladiolus caryophyllaceus*. The spring season has heralded an excellent display of wildflowers including orchids which are even more remarkable in their diversity. This project is funded by the Swan Alcoa Landcare Program (SALP).

WOODLUPINE BROOK LIVING STREAM

Located in the Shire of Kalamunda

Wetland planting undertaken in Hale Rd Basin in November 2009 has survived a season. Other parts of the stream are weedy however Shire maintenance and POS development is starting to get it under control. In 2010 SERCUL undertook planting of the top end above Arthur Rd (area 1) as part of a shire funded project. **Total plants planted: 19,255**

WESTERN POWER SCREENING PROJECT

The three year program of implementation and installation of hard and soft screening for residents was completed with excellent landscaping using local plants resulting in better aesthetics and satisfied local community.

BECKENHAM OPEN SPACE SUBSTATION SCREENING AND WETLAND REHABILITATION

Revegetation and screening of the substation has been very successful. Exotic species continue to germinate but native grass is now dominating in the understory. Weed control and maintenance continues.



VOLUNTEER COORDINATION

VOLUNTEER COORDINATION PROGRAM

Coordinated by Monica Estrada

Program Aim:

Through a 2009 DEC Grant, SERCUL employed a part time administration officer to assist with community volunteer coordination and to develop a volunteer management system for SERCUL that could also be a framework for community groups.

Key achievements:

- Production of SERCUL's Volunteer Policy and Procedures Manual.
- Production of a short version of the Volunteer Manual 'Volunteer Booklet' as a part of the SERCUL volunteer package.
- Promotion of SERCUL volunteer opportunities and networking improvement through membership of Volunteering Western Australia, Australian Volunteers Search, Go Volunteer and Seek Volunteer.
- Attendance to 'Volunteer Management Network' meetings hosted by Volunteering WA.
- Identifying SERCUL volunteer needs and preparation of volunteer job descriptions.
- Launching of the SERCUL Volunteer Manual.
- Workshop with SERCUL staff to assess current compliance with the National Standards for organisations involving volunteers.
- Coordination of volunteers into SERCUL and other community groups' activities. Improving SERCUL facilities with funding from the Planning Commission to install a disabled toilet and better training facilities.

New volunteers = 48

Volunteer hours = 1,694

Equalling \$40,814.50 worth of labour

48 new volunteers registered from September 2009 to September 2010, including 11 students from Universities, TAFE and Schools.

Kindly funded through DEC Community Grants, Grants to Voluntary Environment and Heritage Organisations (GVEHO) and Bendigo Bank - Gosnells Community Bank Branch.



Monica with the new volunteer booklet

Pat Hart launching the new volunteer manual

Volunteers Otto and Nathan planting

Volunteers Otto and Nathan with their new volunteer shirts

ADMINISTRATION AND COMMUNITY CAPACITY

FINANCIAL ADMINISTRATION SUPPORT TO COMMUNITY NRM GROUPS

The SERCUL financial management officer, Sandy Wainwright, and assistant financial officer, Bonita Clark, continues to provide financial management assistance to the following community groups in the SERCUL area:

- Bannister Creek Catchment Group
- Two Rivers Catchment Group
- Wilson Wetlands Action Group
- Armadale Gosnells Landcare Group
- Friends of McDougall Park (Sth Perth)
- Friends of G.O. Edwards Park
- Canning River Regional Park Volunteers
- Junkbusters

BENDIGO BANK SPONSORSHIP

The Bendigo Community Bank in Gosnells continues to support SERCUL with sponsorship towards the development and maintenance of the SERCUL telephone on hold messages and new Polo Shirts used as a reward for SERCUL volunteers who reach specified hours targets.

VOLUNTEER ADMINISTRATION SUPPORT

Many thanks to all our administration volunteers. Your commitment to SERCUL and the environment is highly valued and appreciated.

NEW GROUP FORMATION & DEVELOPMENT

SERCUL has assisted new community groups to form and provided local community environment volunteers with knowledge, guidance and necessary equipment to start their groups with confidence and due governance.

The Friends of Bull Creek Catchment is a new group of community volunteers who aspire to improve the care of the Bull Creek waterway and its bushland reserves in the catchment. SERCUL staff are assisting the group on the first Saturday of every month in a bushland reserve near Bull Creek waterway to help the group members gain valuable experience in bushland restoration techniques.

The Friends of Wellard Bushland & Wetlands group has formed and SERCUL are assisting with group governance.



Sandy assisting AGLG with their books

Volunteers wearing the new volunteer shirts

Bull Creek Bushland

Friends of Bull Creek Catchment work day

AUDITORS REPORT AND FINANCIAL REPORTS

W F DAWSON & ASSOCIATES

Chartered Accountants



Chartered
Accountants

INDEPENDENT AUDITOR'S REPORT TO THE MEMBERS OF SOUTH EAST REGIONAL CENTRE FOR URBAN LAND CARE INC (SERCUL)

Scope

I have audited the attached financial statements of SERCUL, which has been classified as a non general purpose account, for the year ended 30th June 2010.

SERCUL's Management Committee are responsible for the preparation and presentation of the financial statements and the information they contain. The Committee determines the accounting policies used so as to meet the needs of the members. I have conducted an independent audit of these accounts in order to express an opinion of them to the members.

I disclaim any assumption of responsibility, for any reliance on this report or these accounts, to any persons other than the members, or for any other purpose other than for which they were prepared.

My audit has been conducted in accordance with Australian Auditing Standards to provide reasonable assurance as to whether these accounts are free of material misstatements. My audit procedures include an examination, on a test basis, of evidence supporting the amounts shown in these accounts. These tests have been undertaken to form an opinion as to whether, in all material respects, these accounts are fairly presented.

My audit opinion expressed in this report has been formed on this basis.

Audit Opinion

In my opinion the financial statements present fairly the operating result of SERCUL for the 2009/2010 year and its financial position at 30th June 2010.

Signature of Auditor:

Name of Auditor:


.....
WARREN F DAWSON

9 September 2010

Principal: Warren F Dawson ACA ACIS
Level 2, 43 Cedric Street, Stirling WA 6021
Correspondence - PO Box 2063, Churchlands WA 6018
Telephone: (08) 9207 1977 Facsimile: (08) 9207 1410 Mobile: 0411 809 748
A.B.N.: 30 802 594 173
Email: warrendawson@gmail.com
(Liability limited by a Scheme approved under Professional Standards Legislation)

12:27 PM

13/09/10

South East Regional Centre for Urban Landcare Balance Sheet As of June 30, 2010

	Jun 30, 2010
ASSETS	
Current Assets	
Current/Savings	
Bendigo Term Inv. 139270573	202,560.27
Bendigo Term Investment 1366413	569,793.23
Bendigo working a/c 136248010	275,790.34
Petty Cash	16.10
Petty cash - PAG	100.00
Total Current/Savings	1,048,259.94
Accounts Receivable	
Accounts Receivable	163,219.90
Total Accounts Receivable	163,219.90
Total Current Assets	1,211,479.84
Fixed Assets	
Computer Equipment	
Prov. for depn Computer equip.	-47,314.66
Computer Equipment - Other	55,051.61
Total Computer Equipment	7,736.95
Motor Vehicle at cost	
Prov. for depn Motor Vehicle	-28,102.04
Motor Vehicle at cost - Other	89,590.63
Total Motor Vehicle at cost	61,488.59
Office Equipment	
Prov for depn Office Equipment	-31,824.60
Office Equipment - Other	41,071.65
Total Office Equipment	9,247.05
Plant & Equipment	
Prov for depn Plant & Equipment	-5,696.52
Plant & Equipment - Other	9,133.16
Total Plant & Equipment	3,436.64
Total Fixed Assets	81,909.23
TOTAL ASSETS	1,293,389.07
LIABILITIES	
Current Liabilities	
Other Current Liabilities	
Grants in advance	543,028.08
Payroll Liabilities	21,521.99
Tax Payable	66,152.83
Total Other Current Liabilities	630,702.90
Total Current Liabilities	630,702.90
TOTAL LIABILITIES	630,702.90
NET ASSETS	662,686.17
EQUITY	
Retained Earnings	505,027.52
Net Income	157,658.65
TOTAL EQUITY	662,686.17

12:32 PM

13/09/10

South East Regional Centre for Urban Landcare

Profit & Loss

July 2009 through June 2010

	Jul '2009 - Jun 2010
Ordinary Income/Expense	
Income	
Admin In	95,731.80
Anvil Way 11-12	
Erosion control	0.00
Weed control	0.00
Total Anvil Way 11-12	0.00
Beckenham Memorial Park.	6,316.01
Bickley Brook	6,803.92
Canning River Tribs	2,500.00
Centenary Pk Comp Basin Belmont	
Admin	2,367.25
Equipment	10,775.00
Labour	6,400.00
Plants	6,497.50
Total Centenary Pk Comp Basin Belmont	26,039.75
CFOC Employment	235,000.00
City of Canning CLC	40,560.00
City of Fremantle Booyeembara P	37,022.71
Contract labour in	12,045.45
DEC Grants 09	
Tree Hollows	
Admin	480.00
Expert labour	7,568.00
Materials	3,127.00
Total Tree Hollows	11,175.00
Total DEC Grants 09	11,175.00
Donations and income	550.00
DPI-salary in	61,080.00
Employment Insurance	8,215.00
Employment.	10,250.00
Fertilise Wise Education	
Admin	5,000.00
Total Fertilise Wise Education	5,000.00
FO Wireless Hill	2,652.00
Grants	31,062.25
GVEHO 09-10	2,300.00
HR & Training.	23,528.00
Hydrocotyl	472.50
Interest received	23,758.04
Laggards-Wages Insurance Admin	50,000.00
Lambertia Floodplain Watsonia	4,540.91
Liege Street	1,228.06
LSL Liability.	5,442.00
NRM Off L5 salary Tom A	11.84
Nth Forrestdale-Education	20,148.34
On Ground.	
Jute matting	854.75
Mulch	2,500.00
Plants	47,845.03
Volunteer support	250.00
Weed control	6,000.00
Total On Ground.	57,449.78
PAG Landcare Award 2009	1,000.00
PAG operating costs	20,689.66
Project supervision	125,000.00
Promotions in	1,386.67
Queens Park Weed Mapping.	7,110.00
Registration	4,945.47
Reimbursements	11,546.42
Reimbursements- DPI	64,591.57
Research Analysis Fees	1,565.52
Sponsorship	2,000.00
SRT Grants	250,000.00
Tarun Ct Basin	7,200.00
Urban Renewal Projects	
Administration	7,500.00

12:32 PM

13/09/10

South East Regional Centre for Urban Landcare

Profit & Loss

July 2009 through June 2010

	Jul '2009 - Jun 2010
Construction	0.00
Planning & Design	0.00
Plants	0.00
Project Management	
Armadale	36,000.00
Total Project Management	36,000.00
Weed Control & maintenance	0.00
Total Urban Renewal Projects	43,500.00
Wharf St 09-10	8,000.00
Woodlupine	
Admin	3,600.00
Labour	15,600.00
Total Woodlupine	19,200.00
Worldwide Printing-Masons L.	0.00
Yulebrook Project	0.00
Total Income	1,348,618.67
Gross Profit	1,348,618.67
Expense	
Admin	
Admin Service Fees	81,847.56
Books/Publications	1,353.16
Communication/computer	7,901.22
Insurance	7,513.34
Office equipment	3,320.21
Office Grounds	2,203.47
Office Maintenance	2,238.37
Postage	681.93
Project Transfer	3.52
Promotion	15,899.72
Stationery	2,360.20
Subscriptions	190.91
Utilities	1,802.44
Volunteer support	7,697.44
Total Admin	135,013.49
Audit	850.00
Bank Service Charges	87.23
BCLS Typha Program	129.26
Beckenham MP On Ground.	5,000.00
Bickley Brook.	855.95
Canning River Fish Passage.	
Communications	1,546.95
Total Canning River Fish Passage.	1,546.95
Centenary Pk Comp Basn Belmont	
Equipment	10,775.00
Labour	6,400.00
Plants	6,497.50
Total Centenary Pk Comp Basn Belmont	23,672.50
City of Joondalup.	2,580.00
Contract Labour	10,078.03
DEC Grants 09-10	
DEC Grants Volunteer Mgm	1,374.16
Tree Hollows	
Admin.	480.00
Expert labour.	7,567.36
Materials	3,053.42
Total Tree Hollows	11,100.78
Total DEC Grants 09-10	12,474.94
Depreciation Expense	23,043.77
Donations & Income	527.78
Employment Insurance.	8,215.00
Employment,	6,417.32
Eugene's Water Quality Project	150.63
Fertilise Wise Education.	

12:32 PM

13/09/10

South East Regional Centre for Urban Landcare

Profit & Loss

July 2009 through June 2010


	Jul '2009 - Jun 2010
Admin	588.00
Total Fertilise Wise Education.	588.00
GVEHO 08-09	613.63
HR & Training	36,990.49
Hydrocotyl.	472.50
Laggards-Vehicle Operation Exp.	2,125.45
Laggards-Wages Ins Admin	42,895.00
LaggardsComputer equip software	307.31
Lotterywest.	2,477.52
LSL Liability	5,442.00
Masons Landing-Area 3	2,745.37
McDougall Park-Friends of.	1,250.00
Mobile phone	1,560.00
Nth Forrestdale Consultancy	13,725.00
On Ground	
Equipment	680.77
Plants	41,601.25
Volunteer support	320.00
Weed control	4,034.86
Total On Ground	46,636.88
PAG-oper costs	
Operating costs	19,578.62
Total PAG-oper costs	19,578.62
Payroll Expenses	555,486.42
Promotions	8,138.26
Queens Park Weed Mapping	236.70
Rehoboth H.S.	1,565.52
Reimbursement	12,061.92
Reimbursement-DPI	63,190.54
Research Analysis Fees.	120.00
SALP 09/10 WONS	6,268.86
SGIO Grant 09.	
Brochures	557.70
Plants	259.20
Reticulation	144.77
Total SGIO Grant 09.	961.67
Stencilling paint.	144.24
Sustainable Production Op costs	283.01
Taro Project-C of G.	3,159.50
Tarun Ct Basin.	5,636.50
Travel	16,692.00
Urban Renewal Projects.	
Administration	8,696.50
Construction	5,300.00
Planning & Design	1,920.00
Project Management	
Armadale	30,000.00
Total Project Management	30,000.00
Weed Control & maintenance	19,272.73
Total Urban Renewal Projects.	65,189.23
Vehicle operation expenses	8,470.39
Water Quality Monitoring.	2,436.30
Western Power	
Hard screening	11,947.38
Plant screening	8,300.06
Total Western Power	20,247.44
Wharf St 09-10.	8,000.00
Woodlupine.	
Admin	1,350.00
Labour	2,569.67
Total Woodlupine.	3,919.67
Worldwide Printing-Masons L	701.23
Total Expense	1,190,960.02


12:32 PM
13/09/10

South East Regional Centre for Urban Landcare Profit & Loss July 2009 through June 2010

	Jul '2009 - Jun 2010
Net Ordinary Income	157,658.65
Other Income/Expense	
Other Expense	
Asset purchases-Computers	0.00
Asset purchases-Motor Vehicles	0.00
Asset Purchases-Office equip	0.00
Total Other Expense	0.00
Net Other Income	0.00
Net Income	<u><u>157,658.65</u></u>

STATEMENT BY THE MANAGEMENT COMMITTEE




South East Regional Centre for Urban Landcare

69 Holey Road,
Beckenham, Western Australia 6107
Telephone: 08 9458 5664
Facsimile: 08 9458 5661
Website: www.sercul.org.au

STATEMENT BY THE MANAGEMENT COMMITTEE
SOUTH EAST REGIONAL CENTRE for URBAN LANDCARE (INC.)

In the opinion of the Members of the Committee;


(a) The accompanying Profit and Loss Statements is drawn up so as to give a true and fair view of the results of the Group for the year ended 30th June 2010.


(b) The accompanying Balance Sheet is drawn up so as to give a true and fair view of the state of affairs of the Group as at the end of that period.

(c) At the date of this statement there are reasonable grounds to believe that the Group will be able to pay its debts as and when they fall due.

The Accounts of the Group have been prepared in accordance with applicable Australian Accounting Standards.

Signed in accordance with a resolution of the Committee.


Treasurer


Chairperson

Date 11th November 2010

Date 11th November 2010

NEW 2010-2011 PROJECTS

TURF MANAGER TRAINING PROGRAM

Coordinated by Amy Krupa

Turf managers, including Local Government Parks and Gardens Officers, working in the Swan Canning Catchment will have the opportunity to be Fertcare trained. The training will be focused on fertiliser best management practices and will also include focus areas as identified by the Phosphorus Awareness Project's Annual Nutrient Survey for Local Government Authorities. It is expected that 200 turf managers will be trained through this program.

Kindly funded by the SRT Healthy Rivers Program.

ANVIL WAY DNIP

Coordinated by Tom Atkinson

This SRT Canning and SERCUL partnership project is set to commence in November 2010. The project aims to improve water quality in the Mills St main drain.



FRESHWATER FAUNA EDUCATION PROJECT

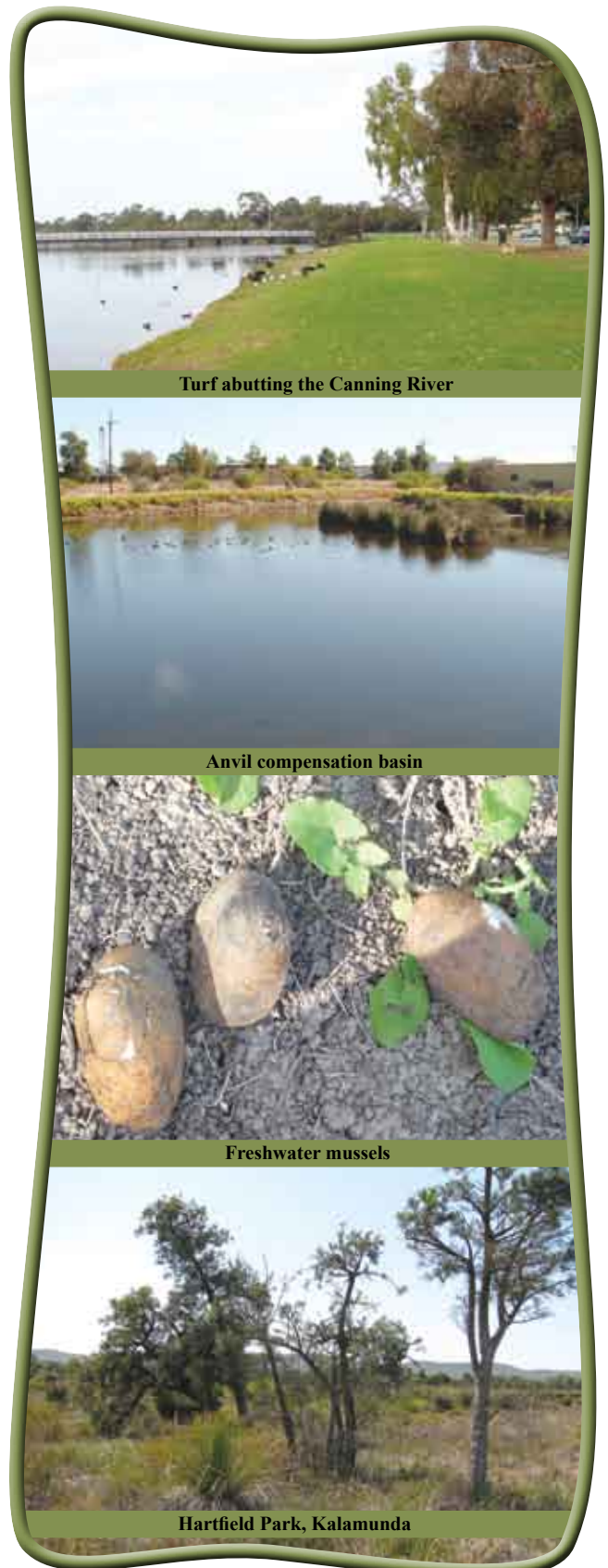
SERCUL in partnership with the Murdoch University Fish Health Unit have successfully gained Lotterywest funding to develop and implement a Freshwater Fauna Education Project. The project has created the musselwatchWA website and will create a 15 minute video of Southwest WA freshwater fauna in action as well as develop a picture brochure and reference booklet. This work will be promoted with an educational seminar series commencing in mid 2011.

SCIENCE PROGRAM DEVELOPMENT

SERCUL are developing a new Science Program to enhance the integration of more science into all of it's projects.

KALAMUNDA PROJECT - HARTFIELD PARK

SERCUL was awarded a tender for weed mapping in spring 2010 and weed management planning for the Hartfield Park Bushland in Wattle Grove (Shire of Kalamunda)



Turf abutting the Canning River

Anvil compensation basin

Freshwater mussels

Hartfield Park, Kalamunda

NEW 2010 - 2011 PROJECTS

URBAN WATERWAYS RENEWAL PROJECT

Coordinated by Ana Terrazas

The 'Urban Waterways Renewal' (UWR) project is funded by the Australian Government through Water for the Future - National Water Security Plan for Cities and Towns program.

The Australian Government funding will provide \$4 million dollars for actions identified in the Swan Canning WQIP. The project partners are matching this funding commitment through the expansion of existing and development of new works programs.

The UWR project objectives is to retrofit the existing Local Government drainage for Bannister Creek, Bickley Brook and Southern River Catchments. In addition to improving water quality these projects will improve the visual amenity of the urban areas and restore natural habitats, improve biodiversity and reduce erosion as well as demonstrate nest management practices for stormwater management.

There is a total of 11 projects running across the Cities of Canning, Gosnells and Armadale.

Bannister Creek Living Stream - City of Canning

The aim of this project is to enable the final sections of Bannister Creek to be restored to perform as a living stream, while maintaining its function of carrying stormwater from the surrounding industrial and urban catchments.

This will be done by the installation of stormwater treatment media, weirs, riffles and establishment of healthy fringing vegetation for the biofiltration of pollutants.

Bickley Brook - City of Gosnells

There are three project sites on the Bickley Brook (Bickley Brook Confluence, Mandarin Road and Eva Street to Tonkin) with these projects aimed to reduce contamination entering the Canning River from the Bickley Brook and to increase the natural systems ability to retain and uptake nitrogen and phosphorus.

This will be done by battering steep banks, the establishment of natural vegetation along the bank, riffle construction and weed management.

The four projects in the City of Gosnells aim to retrofit



NEW 2010 - 2011 PROJECTS

approximately 200m of urban industrial open drain with a series of biofiltration systems or 'rain gardens' to improve the quality of stormwater being delivered to Bickley Brook at the Myola South Place outfall.

Southern River - City of Armadale

There are five projects in the City of Armadale consisting of living stream construction and bioretention systems.

Grovelands Reserve, Strawberry Drive and Third Avenue and Seville Grove projects are aimed at retrofitting detention basins or sumps in public open space enabling the first stages of a treatment train for water that is discharged from the surrounding commercial, industrial and residential catchment and will be treated in a bioretention system before entering the Wungong River.

The project will involve the incorporation of groundwater trench technology and amended soil media, revegetation with native species, weed management and installation of MyCelx for catchment investigation.

Wungong River and Riverside Lane projects aim to significantly reduce the quantity of nitrogen entering the Wungong River by creating a living stream.

This will be done by removing sections of pipe (near Lake Road and Riverside Lane) that feed into the river and replacing them with living stream to treat water for nitrogen and phosphorus in addition to increasing oxygen levels. Weed management, revegetation with native species and the incorporation of soil media will also occur in both projects.

Williams Road Drain Project

Williams Road Drain is a combination of a large open swale and subsurface piped system. The piped section drains low flow periods and supports the drainage during peak flows. The aim of this project is to capture sediment and gross pollutants to lower the nutrients levels; reduce bank erosion; as well as creating an ecological linkage with the Armadale Gosnells Landcare Group site immediately downstream.

These projects are funded by Federal and State Government, the Swan River Trust, Water Corporation and the Local Governments of Canning, Gosnells and Armadale.



NEW STAFF AND DIRECTIONS AT SERCUL

NEW STAFF

Matt Grimbly commenced at SERCUL in July 2010 taking over Glen Byleveld's role as the Canning River Restoration Officer. This role involves the eradication, education and control of Weeds of National Significance (e.g. Blackberry, Willows, Boneseed), protection and enhancement of TEC's and the restoration of the Canning River. This role is funded by the Australian Government's Caring for Our Country Program via the Perth Region NRM.

Annick DeLange commenced at SERCUL in September 2010 full time as the Waterways Restoration Officer for the Urban Waterways Renewal Project. She will assist the SERCUL team to coordinate the Urban Waterway Renewal projects in Gosnells and Bannister Creek. This role is funded by the UWR Project.

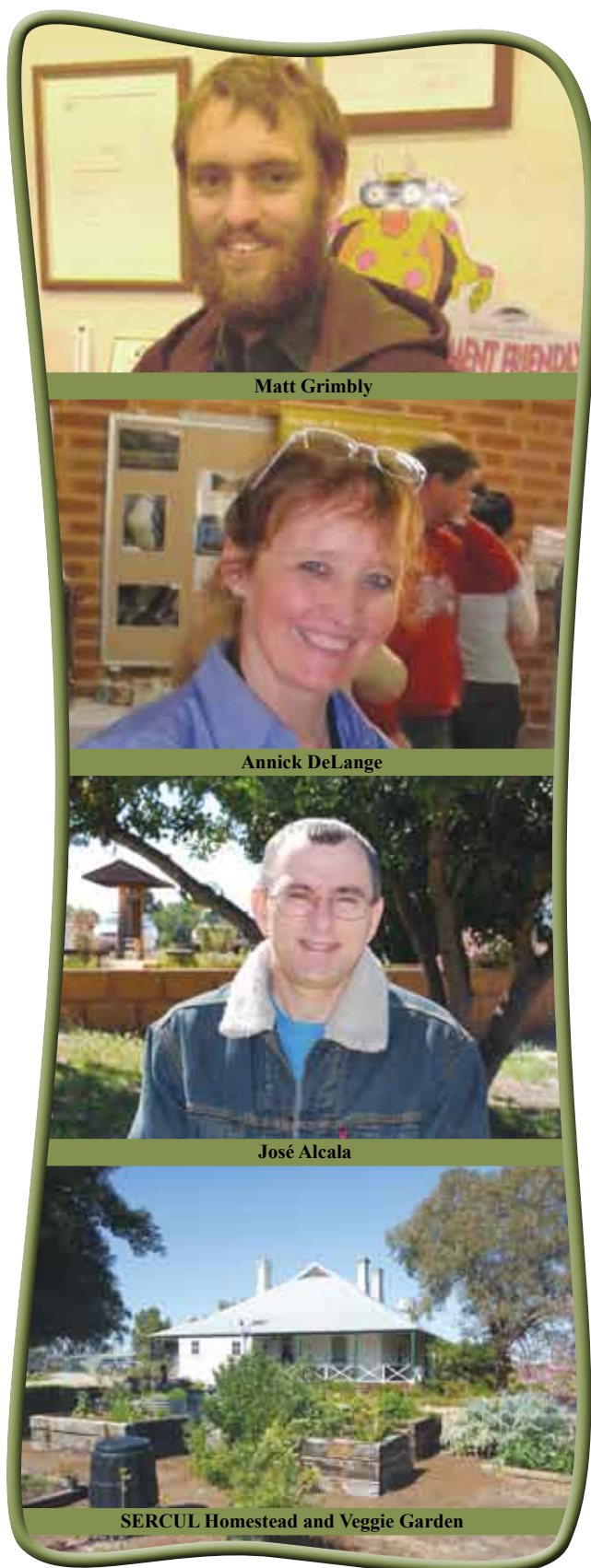
José Alcala commenced in October 2010 as an Assistant Financial and HR Administrator. Jose' will assist with the overall financial and administrative governance. This role is funded by SERCUL.

FUTURE DIRECTION OF SERCUL FOR 2010-2011

SERCUL is looking forward to exciting new projects that will commence in this new year and progress through into 2012. A new focus on a scientific approach to what and how SERCUL develop and implement NRM will progress the success of landcare from an ecological function perspective. We hope that our partnerships will prosper accordingly.

SERCUL will undertake a review of its internal management structures, its training program and core values, to ensure that we continue to provide a holistic and innovative approach to community development and long term, sustainable NRM. This will include a review of our approach towards evaluating restoration and educational success including social and behavioural science as a critical element of our NRM program.

The SERCUL team look forward to the consolidation of partnerships during this phase of NRM delivery growth.



Matt Grimbly

Annick DeLange

José Alcala

SERCUL Homestead and Veggie Garden

THANK YOU

The South East Regional Centre for Urban Landcare Inc. Committee and Staff sincerely thank all the Community groups, Non Government Organisations, Volunteers, Local Government Authorities, State and Australian Government Departments and Private Business project partners for your contribution towards the care and protection of the Natural Resources of the Swan Region during the 2009 - 2010 year. We look forward to continuing our partnerships in 2010 - 2011 to achieve an even more sustainable approach to Natural Resource Management in Perth, Western Australia.

Good luck for 2010 - 2011



South East Regional Centre for Urban Landcare Inc.

69 Horley Road Beckenham WA 6107

Phone: 9458 5664 Facsimile: 9458 5661

Email: julierobert@sercul.org.au

Website: www.sercul.org.au

ACKNOWLEDGEMENT OF FUNDING PARTNERS

The South East Regional Centre for Urban Landcare acknowledges and sincerely thanks the following Australian Government Departments, State Government of WA Departments, Natural Resource Management organisations, Private Businesses, Local Governments, and Community groups for their financial and in-kind contributions which has led to the success of our project delivery for the 2009 - 2010 year.



CARING
FOR
OUR
COUNTRY



Western
Australian
Planning
Commission



Australian Government



Department of
Environment and Conservation

Our environment, our future



Government of Western Australia
Department of Water

BOWRA & O'DEA
FUNERAL DIRECTORS



Caring for the Swan Canning Riverpark



Gosnells **Community Bank®** Branch



Men of the Trees



— City of —
Melville



CITY OF PERTH



TOWN OF VINCENT





South East Regional Centre for Urban Landcare

69 Horley Road
BECKENHAM WA 6107

Phone: 08 9458 5664

Fax: 08 9458 5661

Email: julierobert@sercul.org.au

Website: www.sercul.org.au