

South East Regional Centre for Urban Landcare

Annual Report 2008-2009





Heleioporus cyrei (Moaning Frog)

ACHIEVEMENTS AND HIGHLIGHTS OF 2008-2009



Fertilise Wise Endorsement Launch



Hypocalymma robustum



Yule Brook



Beckenham Open Space



Fertilise Wise Product Endorsement Project developed and implemented

State & Federal Govt NRM Grants = \$608,000

Local Govt Grants & Support = \$245,000

Other Project \$ Attracted = \$272,207

\$ Value of Volunteering > \$632,220

Total SERCUL & Volunteer \$ = \$1,149,427

Plants Planted = 281,400

130 Waterway sites sampled and 460 samples were analysed in the Perth Region

Volunteer contribution > 21074 hrs

> 37000 People received education, via direct information or on ground contact

The return for Government Investment in NRM via SERCUL and the partnering community groups is \$1,149,427

Value of investment in SERCUL community NRM project delivery is \$1.35 for each Govt NRM \$1 invested.

CONTENTS AND FEEDBACK



Volunteers from Curtin University assisting SERCUL land care staff to remove litter and weeds from the floodplains of Yule Brook and the Canning River. 41 bags of litter was removed.

Contents

Achievements & Highlights	3
Contents & Feedback	4
SERCUL Committee	5
SERCUL Vision, Mission & Objectives	6
NRM Structure in Perth	7
Chairs Report	8
Treasurer's Report	9
SERCUL NRM Program	10
Activity Reports	11 - 23
Auditor's Report	24 - 28
Future Projects	29 - 31
Funding Bodies Acknowledgement	32 - 33
Acknowledgment & Thanks	34

Feed Back from people associated with SERCUL during 2008-09

"The collaboration between SERCUL and Options Employment at GSI has created excellent opportunities for long term unemployed people and enabled young people to benefit from the extensive knowledge and experience found in the staff at SERCUL." (GSI Options Employment)

Dear Amy,

Thank you for helping us learn about building a frog pond.

We liked listening to the frog noises.

Thank you for bringing all the frogs and showing them to us. Our favourite is the motorbike frog.

We have dug the hole for our pond and today we are planting some plants to help the frogs hide.

From Kindy Blue.

August 22nd 2008

Campbell Primary School

"Thankyou Julie & SERCUL staff, your help, encouragement and support has changed my life, and for that I am very grateful." (Community group member).

Thankyou, for your willingness to support us in this project, giving up your time to work on the management plan is greatly appreciated by us all. (Community group members)

SERCUL COMMITTEE 2008-2009



SERCUL staff at Yanchep team building session



New shed built in Beckenham Open Space



Baby long necked tortoise in wetlands near SERCUL office



Volunteers assist with Fertilise Wise Program education

Executive Committee

Chair	Mrs Pat Hart
Vice Chair	Mr Marc Lane
Treasurer	Mr Cam Clay
Secretary	Position Vacant

Community Committee Members

Dr Margaret Mathews
Mr David James
Mr Brian Aldrich
2 Positions Vacant

State Government Agencies and Local Government Authorities Represented

Swan River Trust
Department of Planning and Infrastructure (WAPC)
City of Armadale
City of Belmont
City of Canning
City of Cockburn
City of Fremantle
City of Gosnells
Town of Kwinana
City of Melville
City of South Perth
Town of Victoria Park

STAFF EMPLOYED DURING 2008-2009

Regional NRM Coordinator: Julie Robert
Financial Administrator: Sandy Wainwright
Administration Assistant: Bonita Clark
NRM-Education (PAG): Amy Krupa
NRM-DNIP: Tom Atkinson
NRM-Water Quality: Ana Terrazas
NRM- Biodiversity/River Restoration: Glen Byleveld
NRM- Phd researcher: Paul Lock
NRM-Landcare: Melinda Snowball
NRM-Landcare: John Maliunus
NRM-Landcare: Tracy Evans

SERCUL CONSTITUTION

Vision

To have, as a given, the Natural Resources of the South Region of Perth managed in a healthy and sustainable manner by all stakeholders for future generations.

Mission

The aim is to use integrated natural resource management to develop cultural change in how the community views and interacts with the environment while promoting and actively participating in, the improvement of the health of waterways and other ecosystems within the South Region.

Objectives

1. Identify priority Natural Resource Management issues in the South Region in partnership with Local Government, State Government and Industry.
2. To ensure biodiversity within the South Region is monitored, protected and enhanced.
3. Develop and assist community, State and Local Government in the coordination of Natural Resource Management in the South Region.
4. Support and encourage the implementation of best management practice of Natural Resources within the South Region.
5. Recognise and embrace Aboriginal, Cultural and Natural heritage.
6. Foster research on matters relating to the South Region's Natural and Cultural heritage.
7. Work in partnership with Local Government, State Government and industry to educate the wider community to protect our Natural Resources.
8. Support and encourage the formation of community environment groups.
9. Administer the South Regional Urban Landcare fund to promote the objectives and outcomes of the Association.



Tom & son, Sebastian, planting in Masons Landing site



Beckenham Memorial Park in Beckenham Open Space



Children using the catchment model in the park



Dieback prevention in action at Wireless Hill, Melville.

THE NRM ORGANISATIONAL STRUCTURE IN PERTH

SERCUL is one of five sub-regional bodies operating in the metropolitan and peri-urban areas of the Swan Catchment. The area covered takes in most of the southern and eastern suburbs of Perth and includes Dyarguu (the Canning River), the Southern-Wungong River and parts of Derbarl Yerrigan (the Swan River). This is shown in the map below:

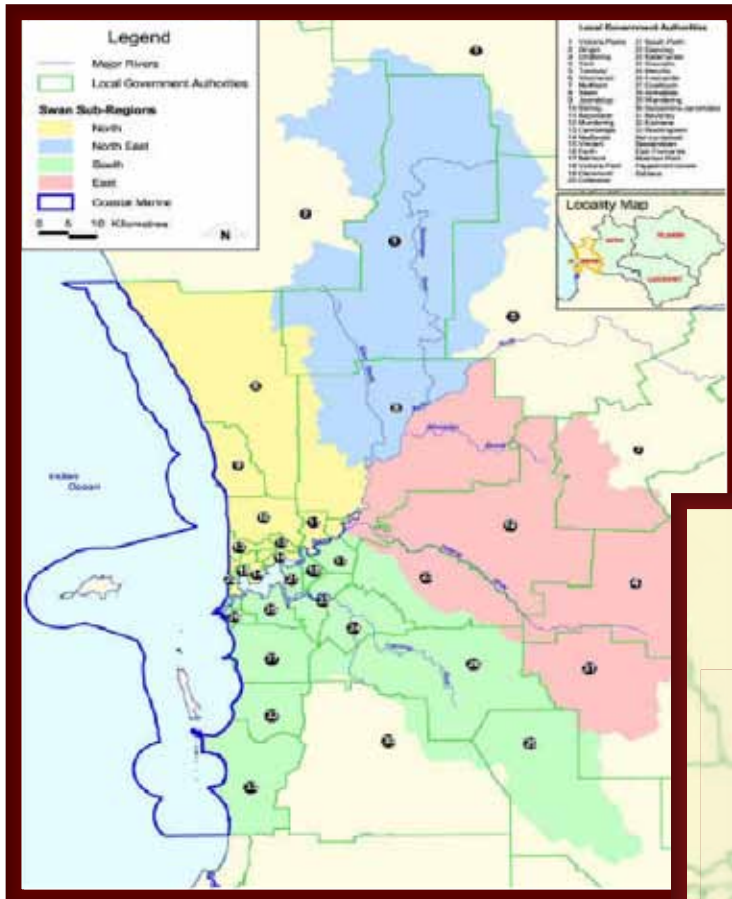


Figure 1: Division of the Swan NRM Region into 5 Sub regions

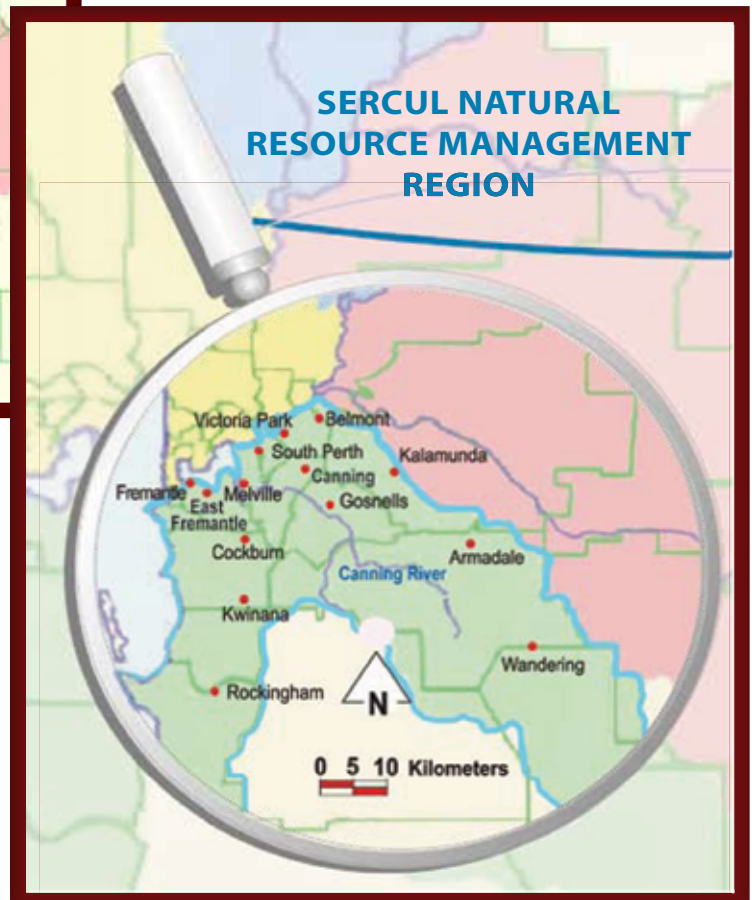


Figure 2: South Sub Region

The South Region is defined as consisting of those parts of the Cities of Armadale, Belmont, Canning, Cockburn, East Fremantle, Fremantle, Gosnells, Kwinana, Melville, Rockingham, South Perth, Shire of Kalamunda and Town of Victoria Park which fall within the boundary of the Natural Resource Management Region of the Swan Region.

FROM THE CHAIR - Pat Hart



Challenged, disappointed, excited, pleased and very proud, are just some words that describe this past year as Chairperson of SERCUL.

The Australian & State Government's decisions, either to not fund or to delay the funding of NRM projects in the Perth metropolitan area has been a real blow to all NRM organisations. On a more positive note, both the State and Federal Governments, have just decided to release some funds but it needs to be recognised that in the delays for decisions on release of these funds, there has been a real loss of confidence in just how Natural Resource Management is viewed in Western Australia.

While we acknowledge that it is critical that the funds are spent focusing on State priorities with real outcomes, the ability for NRM groups to attract additional dollars at the same time, while obtaining real outcomes, are in many cases, opportunities lost to this State with these excessive delays. With that loss, comes the loss of volunteers and their knowledge. This creates a general loss of credibility of both the State and Commonwealth

Governments in managing NRM.

With these funding issues come the challenges that SERCUL and other organisations face in a climate where sponsorship opportunities are declining. SERCUL, with the support of a great working team under the guidance of General Manager/Coordinator Julie Robert have certainly risen to the occasion. The information and outcomes identified in our Annual Report will clearly demonstrate this.

One significant outcome was SERCUL's role in working with the Federal, State & Local Government staff to ensure that the investment of \$4,000,000 over three years for the implementation of the Canning and Southern Rivers Urban Drainage renewal project, a federal election commitment, is effectively delivered.

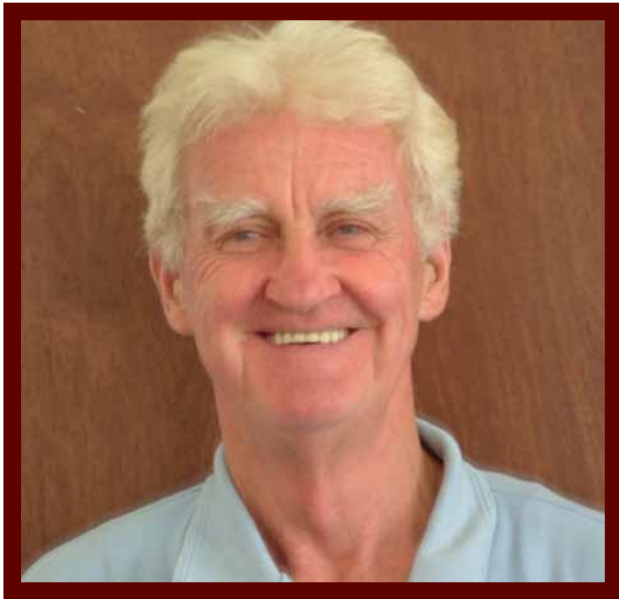
Another key achievement is the progression of the Fertilise Wise Program. The 'Fertilise Wise' logo is now available for use in badging of products that meet a stringent product endorsement criteria set up by the SERCUL Fertilise Wise Management team. There is real excitement around the Perth metropolitan area for this project as it is currently being promoted. It answers a common question for Perth residents – 'What fertilisers can we use to be effective and responsible in protecting the river?' While we only have one company accredited under SERCUL's Endorsement scheme at this time, there is great promise for its future expansion.

I would finally like to thank most sincerely, Julie Robert and the staff, at SERCUL for all their tremendous outcomes with their projects. This again has been a really great team effort. Thanks to Cam Clay and all other members of our Committee. Many thanks also to our Local Governments for all their great support, to the Swan River Trust for their critical funding and support, to other Government agencies, Regional & subregional groups and NGO's and last but not least all our community volunteers for their outstanding commitment for the ongoing maintenance and repair of our precious natural environment.

PAT HART

October 2009

FROM THE TREASURER - Cam Clay



It has been with pleasure that I have been able to assist the SERCUL committee and staff to manage the finances of the SERCUL organisation. This financial year has again, been a very successful year with the continued progression of landcare projects, research projects and solid partnership development that has preceded a consistent and persistent approach to Natural Resource Management in the South region.

The SERCUL team were very successful in gaining funding for project delivery during this financial year, from many sources including the Swan River Trust, Perth Region NRM, the Australian Government, City of Canning, City of Armadale, City of Gosnells, Department of Environment and Conservation, Department of Water, West Australian Planning Commission, Western Power, City of Melville, City of Belmont, Town of Victoria Park, City of South

Perth, Lotterywest, Bowra & Odea and the Men of the Trees. I would like to thank all the above listed funding bodies and also all the volunteers who have dedicated huge amounts of hours to the delivery of projects in the SERCUL region. Congratulations to the volunteers who have supported SERCUL to deliver the many on ground projects, assisted in the office, committee and more generally with helping to repair the local environment. The voluntary contribution hours for this year were calculated as at least 21074 hours = \$632,220.

SERCUL's financial position remains very stable, with some steady growth in the past 12 months. The SERCUL achieved State and Federal Government funding grants to the value of \$608,000. The Local Government contribution to salaries, administration and projects was \$245,000. SERCUL gained other financial contributions of \$272,207 from local businesses, community individuals and community NGO's.

I would like to thank the staff at SERCUL and all those who have contributed towards the strong partnerships and positive NRM outcomes that have been delivered during the 2008-2009 financial year. I also thank the Chair, Pat Hart, for her strong leadership, motivation and the solid network that she maintains and provides to the SERCUL committee, staff and community groups.

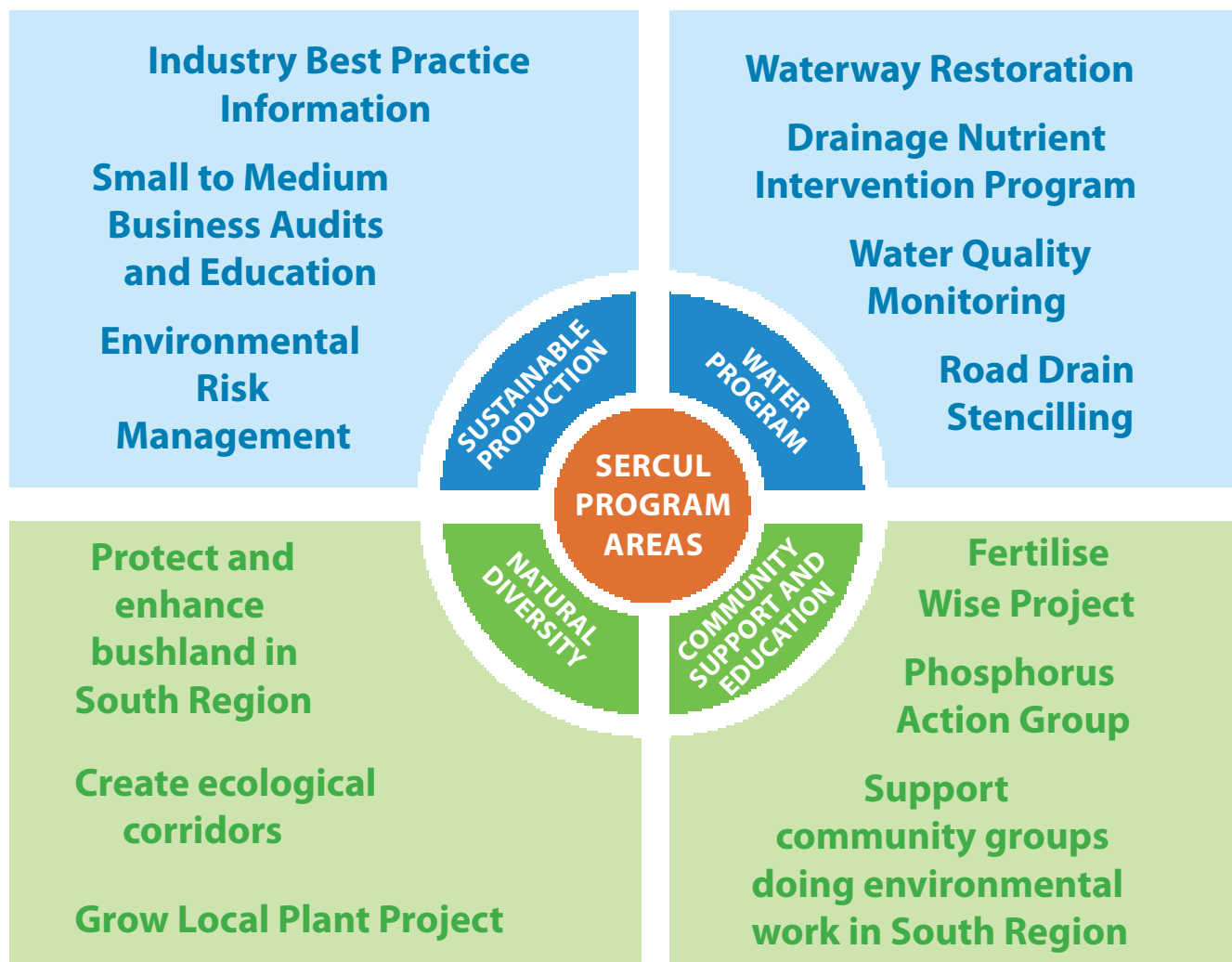
It is with pleasure that I present the independently audited financial statements for the year ended June 30th 2009. The following Financial Reports are on pages 24-28.

Independent Audit Report
Income & Expenditure Statement
Balance Sheet
Statement by Members of the Committee

CAM CLAY

October 2009

SERCUL NRM PROGRAM AREAS



EDUCATION ACTIVITIES

PHOSPHORUS AWARENESS PROJECT

Coordinated by Amy Krupa

The Project is an education campaign for the general community educating them to decrease their nutrient outputs and thus algal blooms in the Swan & Canning River Systems.

- **Displays** - 12 displays with over 3500 people spoken to.
- **School Presentations** – 130 presentations to over 4000 students from Kindy – Yr 12.
- **School Planting Sessions** – 12 400 plants planted at 22 planting sessions, 650 students, 900 volunteer hours, totalling \$27 000 volunteer value.
- **Community Presentations** - 18 presentations to 600 people.
- **LGA Annual Nutrient Survey** – 2009 survey sent in June. Have received 23 responses. Report currently being written.
- **Supported Groups with Project Resources** - on 47 occasions.
- **Canoeing on the Canning** – 30 teachers attended this full day professional development workshop.
- **Catchments, Corridors and Coasts** - on the organising committee and presented at this three day course attended by 25 participants.
- **Fertilise Wise Project** - >2500 of all five brochures distributed.
- **Grow Local Plant Project** - >3000 of all five brochures distributed.
- **Brochure Distribution** - >15 000 Phosphorus Awareness Project items distributed.
- **Articles** - about the Project in newspapers and newsletters on 9 occasions.
- **Education Newsletter** - (four/year to 250 schools)

Kindly funded by the Swan River Trust's Healthy Rivers Program.



Catchments, Corridors and Coasts 2009



Display at Envirofest 2008



Where Does the Water Go?



Garden Week 2009 Display

EDUCATION ACTIVITIES

NORTH FORRESTDAL E NUTRIENT REDUCTION CAMPAIGN

Coordinated by Amy Krupa, Paul Lock & Julie Robert

This campaign aims to educate residents in four new developments - Arion, Vertu, Heron Park and Newhaven, in the North Forrestdale area, how to 'Fertilise Wise' and thus reduce nutrient inputs to the waterways around the developments.

- **Resident Survey** - postcards letterbox dropped to 460 households in the estate offering free fertiliser once a short survey completed. 30 surveys completed.
- **Fertilise Wise Signage** - twelve signs installed in the estates.
- **Water Sensitive Urban Design Conference 2009**- paper presented at the conference on the process of the education campaign.
- **Presentation** - at Satterley's new resident night at the Heron Park Community Centre to 20 residents.

Kindly funded by the City of Armadale & the North Forrestdale Estates' developers.

FERTILISE WISE FERTILISER ENDORSEMENT PROJECT

Coordinated by Amy Krupa, Paul Lock & Julie Robert



- **Fertiliser Endorsement** - established criteria based on rigorous, independent scientific testing processes and best management practices.
- **Fertiliser Development** - worked with Stocktech and Fertitech to develop the first Fertilise Wise endorsed range of fertiliser products.
- **Promotion** - Fertilise Wise endorsement highlighted in a segment of the Garden Gurus Battle of the Burbs television program.



Curtin Volunteers letterbox dropping postcards



One of the signs installed in the estates



Fertilise Wise Endorsement Project Launch



The Fertilise Wise Endorsement Management Team

WATER PROGRAM ACTIVITIES

WATER QUALITY PARTNERSHIP

Coordinated by Ana Terrazas

Project Aim:

To promote a cooperative and consistent approach to water quality monitoring activities across the region by assisting local governments to assess their water quality data requirements to improve the health of waterways in their locality. SERCUL provides assistance to prepare sampling and analysis plans, undertakes the sampling activities and produces a written report.

Key achievements:

- Ten Local Governments engaged in the Perth Metropolitan Area
- Nine water quality monitoring programs conducted

In 2008-2009, the program filled a critical knowledge gap of sub-catchment water quality data, allowing pollution 'hotspots' to be identified. The data provided an information basis for the Swan River Trust. Monitoring data was used to inform the Coastal Catchment Initiative Water Quality Improvement Plans.

Sample sites = 130

Samples analysed = 460

Kindly funded through Perth Region NRM - supported by the Australian Government through the Caring for our Country Program and LGA's (see final pages).

CLEAN DRAINS RIVER GAINS

Coordinated by Ana Terrazas

Project Aim:

To raise awareness of the link between stormwater drains and natural waterways and to provide information to community on how they can make positive behavioural changes that will see a reduction in pollutants entering creeks, lakes, rivers and wetlands.

Drain Stencilling - more than 248 students, teachers and volunteers contributed 411 hours stencilling drains and dropping brochures around:

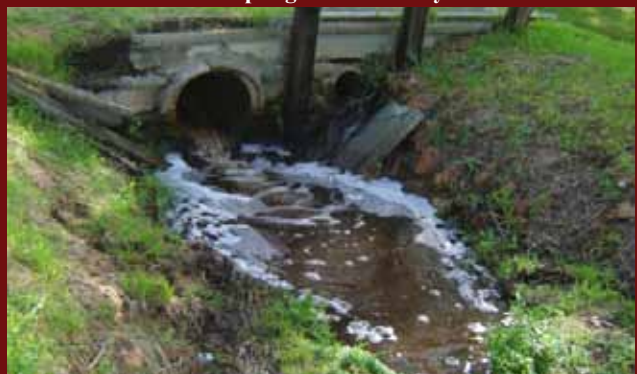
- Kardinya, Myaree, Winthrop and Willagee in the City of Melville
- ECU car park, Mt Lawley and Canning River Eco Education Centre, City of Canning.



Ana water quality monitoring



Sampling site in Bickley



Sampling site in Bassendean



All Saints College students drain stencilling

WATER PROGRAM ACTIVITIES

DRAINAGE NUTRIENT INTERVENTION PROGRAM

Coordinated by Tom Atkinson

Wharf Street Constructed Wetland Project - Year 2

- Location: Adjacent to the Canning River in the City of Canning Administration Centre Parkland (Civic Park).
- Description: Treatment train of surface and sub surface flow wetlands aimed at reducing the nutrient and contaminant export from the Wharf St main drain in to the Canning River.
- Revegetation almost complete pending final adjustments to structures and subsurface wetlands, plant survival and revegetation outcomes satisfactory.
- Plants - 58,000 installed
- Volunteer hours - 280
- Value of Volunteer Hours - \$8 400

Kindly funded by the Swan River Trust and City of Canning.



Civic Park 2008 BEFORE



Civic Park 2009 AFTER



Wharf Street Wetlands in Cannington

WATER PROGRAM ACTIVITIES

OTHER DNIP PROJECTS



Liege Street Wetland



Manley Street Compensation Basin



Tom and Sebastian checking planting site



Riffle created at Bickley Rd Compensation Basin

- **Liege St Wetland Project**, City of Canning.

Maintenance program outcomes reasonable with limited exotic flora recruitment. The wetland vegetation coverage is still well below specification. Weed control and maintenance of wetlands implemented. Interpretive signage was installed and numerous groups have been taken through the wetland area by SERCUL staff.

Plants - 800 installed

- **Manley St Compensation Basin Project**, City of Canning.

Weed control and maintenance only. Some infill planting may still occur in October 2009.

- **Bickley Rd Compensation Basin Project**, City of Gosnells.

Assisted AGLG staff with coordination of project. Maintenance agreement finalised between City of Gosnells and Water Corporation. Small riffle created in autumn to increase retention and treatment capacity.

- **Woodlupine Brook Living Stream**, Shire of Kalamunda, Some parts of the Living Stream are in a reasonable condition, the public open space infrastructure is still largely not implemented. Amenity and infill planting undertaken by Friends Group and at National Tree Day event coordinated by the Shire of Kalamunda and Lions Club of Kalamunda. The DNIP wetland sedge planting is still to be undertaken in November 2009.

Plants - 3740 installed

Volunteer Hours - 160

Value of Volunteer Hours - \$4 800

- **Water Quality Monitoring** – Assisted Department of Water with monthly WQ monitoring for the DNIP sites.

Kindly funded by the Swan River Trust, the City of Canning, City of Gosnells, Shire of Kalamunda and the Swan Alcoa Landcare Program.

WATER PROGRAM ACTIVITIES

CANNING RIVER RESTORATION

Coordinated by Glen Byleveld

This project involves the identification and prioritisation of critical habitat areas within the Canning River System and on-ground works commenced to address key threats to those assets. The Project supported and extended existing rehabilitation programs carried out by community groups on the Canning River foreshore.

An additional four kms of foreshore area was prepared for revegetation with a focus on the control of Weeds of National significance Blackberry, Bridal creeper and the invasive species Watsonia. I would like to thank the Armadale Gosnells Landcare Group for their inkind and capital support, particularly the expertise and commitment shown by Rivercare Officer Matt Grimbly.

NATURAL DIVERSITY SOUTH PROJECT

Coordinated by Glen Byleveld

The project milestones have been completed and extended through partnerships with the City of Canning, Gosnells, Cockburn, Armadale, Melville and Shire of Kalamunda.

Project activities include:

- Control and eradication of Weeds of National Significance (WONS) in priority reserves Blackberry (5ha), Bridal creeper (4ha) & eradication of Lantana (0.5ha).
- Phytophthora Dieback Treatment and mapping (30ha)
- Support for 16 community groups with project applications and onground initiatives
- Dieback Field days – Wireless Hill with 80 volunteers and City of Cockburn private landholder's
- Bertram Primary School – Converting a stormwater basin into a constructed wetland.
- Weed Society of WA 2009 Conference presentation 'The Hydrocotyle Experience'

Related projects:

Black Cockatoo Rehabilitation Centre, Hollows monitoring, Urban Waterways Renewal Program, Canning River Sediment Working Group, Hydrocotyle Eradication Project, McKenzie Grove Weir Removal (Fishways Project).

These projects kindly funded through Perth Region NRM - supported by the Australian Government through the Caring for our Country Program.



Bertram Primary School Compensation Basin



Glen Treating a Dieback Affected Tree



McKenzie Grove Weir Removal BEFORE



McKenzie Grove Weir Removal AFTER

WATER PROGRAM ACTIVITIES

CITY OF CANNING COMMUNITY LANDCARE

Coordinated by Melinda Snowball

Funding for the employment of a Community Landcare Officer was provided by the City of Canning.

Hawkesbury Lakes and Vellgrove Avenue Waterway

- Total of 12,568 Plants planted
- Total of 1278 Volunteer Hours
- Volunteer contribution value was \$38 340
- BCCG have received grants totalling \$158132 from SALP 2007 & 2008, Australian Governments Envirofund and the State Government (DEC) for the restoration of Hawkesbury Lakes and Vellgrove Avenue waterway project. Stage 1 & 2 are now nearing completion with over 100,000 plants installed. The water quality in the waterway has improved with formal water quality testing to be done during Spring 2009.

Edgeware Lake Restoration

The Edgeware Lake is situated in Lynwood, off Metcalf Road. A trapezoidal drain supplies surface and ground water into the Water Corporation compensating basin from Langford & Lynwood residential estates. The outflow from the lake enters the Canning River via the restored Litoria stream in the Canning River Regional Park. Funding for the restoration was provided by the City of Canning and SALP. SALP provided \$34650 for plants and weed control. The works are in stage 1, with further work to be done this summer and winter of 2010.

Community Needs Workshop

Following the 2008 Community needs survey a workshop was held with the Landcare community groups in the City of Canning. A draft report has been produced with a final report due to be released in November. The workshop was well attended with many new ideas for the City & SERCUL to provide better community support.

These projects were kindly funded by the City of Canning & the Swan Alcoa Landcare Program.



Hawkesbury Lakes, Willetton 2007 BEFORE



Hawkesbury Lakes, Willetton 2009 AFTER



Vellgrove Avenue, Parkwood 2007 BEFORE



Vellgrove Avenue, Parkwood 2009 AFTER

WATER PROGRAM ACTIVITIES



BannisterCreek Reserve

- Total of 181 volunteer hours
- Equaling \$5430 worth of labour
- Total of 2291 plants planted in the reserve

The reserve restoration is progressing steadily with small numbers of plants installed this year but weed control has been a greater focus. The group meets monthly on site to undertake works. The Group are working towards writing a book that encompasses the history of the Bannister Creek Catchment and its relationship to the surrounding community.

New Bannister Creek Primary School.

The new school is situated on the old Lynwood Primary School site. It is due to commence in 2010. The BCCG will work with the school to develop education programs that will include the reserve as a focus.

Kindly funded by the City of Canning and Department of Environment and Conservation.



- National Tree Day at Masons Landing
- 6600 plants installed
- 70 people attended contributing 210 volunteers hours.
- Equalling \$6300 worth of labour (@ \$30/hour)

Kindly funded by the Swan River Trust's Riverbank Program.



Wood duck family in Nancy's site in the Creek Reserve



Typha removal in Bywood Way section of the Creek



New Bannister Creek Primary School in construction



TRCG National tree day event volunteers @ Masons Landing

WATER PROGRAM ACTIVITIES



National Tree Day Planting at Mary Carroll Park



Keep Australia Beautiful Council Award



McNiel Road Bridge BEFORE



McNiel Road Bridge AFTER



The Armadale Gosnells Landcare Group is a community driven, incorporated body focusing on rehabilitation and restoration of the local native environment and promotion of community awareness of natural resource management within the Cities of Armadale and Gosnells.

- Salary Funding: \$98,000 from the City of Armadale (CoA), City of Gosnells (CoG) and Main Roads.
- On Ground Funding: \$230,000 from SALP, Riverbank, Main Roads WA, WAPC, Lotterywest, Coca Cola, Landcare Australia.
- Facilitated over 50 events, workshops and activity days
- Supported 11 Friends of Groups
- 1142 volunteers
- 6403 volunteer hours
- Volunteer value = \$192,090
- Worked with over 15 different schools
- Installed over 130,000 seedlings
- 18 active sites within the CoA and CoG
- CoA and CoG Local Govt Recognition Award from SALP for the ongoing support to AGLG
- AGLG recipient of the 2009 Keep Australia Beautiful Award in the Protection of the Environment Category

Landcare Coordinator - Crystal McIvor

River Restoration Officer - Matt Grimbley

Kindly funded by the City of Armadale, City of Gosnells, Lotterywest, Swan Alcoa Landcare Program, Riverbank, Main Roads WA, WAPC, Coca Cola and Landcare Australia.

WATER PROGRAM ACTIVITIES

AQUATIC WEED THREATS

HYDROCOTYL RANUNCULOIDES

SERCUL have continued the monitoring of the declared weed *Hydrocotyl ranunculoides* in the Canning River and its tributaries. SERCUL have also undertaken some off site chemical treatment trials.

The Dept of Agriculture & SERCUL will commence new on ground trials in October 2009 testing “Hydrogel” as a transport means for attaching the chemical to the *Hydrocotyl* under the water.

SERCUL has received funding for the control and monitoring of *Hydrocotyl* from the DEC Community Environment Grants for 2009/10.

SAGITTARIA PLATYPHYLLA

SERCUL has discovered a more extensive spread of a declared weed in the Canning - *Sagittaria*. The weed has been present for many years in Hester Drain in Hester Park, Langford, but control has not been effective. SERCUL will assist the LGA's & Dept of Agric to eradicate this weed.

New locations of it were found in the river near Masons landing, in Yule brook and between Yule Brook (Beckenham) & Masons (Cannington) at a few locations. If anyone sees *Sagittaria* they should contact SERCUL, the Swan River Trust or the Dept of Agriculture.

BACOPA MONNIERI

The wetlands and lakes in Perth are under threat from a weed that has advanced in the past two years to now pose a serious threat to native aquatic plants on foreshores of wetlands, lagoons and lakes. *Bacopa monnieri* is also known as “brahmi or dwarf bacopa”. It forms dense mats around edges of wetlands, waterways and through sedgeland. It spreads rapidly from seeds and plant fragments.

Large mats of *Bacopa* have been found in Tom Bateman wetlands, lakes in South Perth, Wilson, Gosnells, Joondalup and Melville.



Hydrocotyl ranunculoides blocking a channel



Sagittaria platyphylla in Hester Drain



Mat of *Bacopa monnieri* in Tom Bateman, Langford.



Bacopa monnieri, close up of flower and leaf structure.

SUSTAINABLE PRODUCTION ACTIVITIES

WINNING WITH THE LAGGARDS

A Small Factory Environmental Management Support Research Project

Coordinated by Paul Lock - PhD Candidate



A Small and Medium Enterprise



Inappropriate disposal of paint



Stencilling to educate workers



SME education to protect our waterways

- Document research phase undertaken during the past year reviewing the research of others in the fields of Small and Medium Enterprise Environmental Management, Conservation Psychology, Environmental Education, Environmental Law and Policy, and Research Methods and Design.

- Worked closely with Dr Catherine Baudains at Murdoch University to design research measurement instruments such as surveys, interview questions and premise and environmental management and cleaner production audits.

- All necessary approvals have been approved by the Murdoch University Human Research Ethics Committee

- Field work is planned to begin soon.

- Paul hopes to work cooperatively with small factory owner/managers who usually struggle with demonstrating good environmental management.

- Different levels of assistance will be given to three groups of 10 factory owner/managers in an attempt to understand how cost effective assistance and incentives can be with businesses that are conventionally ignored or prosecuted.

- It is hypothesised that this relatively small group of businesses (by percentage) contribute a disproportionate share of environmental pollution, but can be more cost effectively engaged in high quality environmental management with assistance as opposed to fines and prosecution.

Kindly funded by the Waste Management Authority's Strategic Waste Initiatives Scheme, the Department of Water and the City of Canning.

NATURAL DIVERSITY ACTIVITIES

BECKENHAM OPEN SPACE (BOS)

Coordinated by Tracy Evans & John Maliunas

The SERCUL Landcare Officers have undertaken weed management and restoration of the Beckenham Open Space where the SERCUL office is located. The Men of the Trees / Bowra & O'Dea Beckenham Memorial Park project continues and is kindly funded by Bowra & O'Dea.

Total Plants planted = 15 000

2156 volunteer hours

Equalling \$64 700 worth of labour

BOS Landcare is kindly funded by the West Australian Planning Commission.

YULEBROOK HOMESTEAD

The southern verandah of the homestead has been completed and the homestead has had a security upgrade internally and externally. A waterless toilet has been installed and new paving completed around the homestead.

A shed and plant holding bay has been constructed enabling more efficient management of landcare equipment and increasing storage capacity.

WESTERN POWER LANDSCAPING

The Western Power landscaping around the Transmission Station has been completed. Revegetation and screening outcomes satisfactory, though exotic species continue to germinate but native grass predominates in the understory. Weed control and maintenance only.

ENVIRONMENTAL SERVICES

Numerous small NRM projects have been delivered by SERCUL staff for Local Governments, private business and State agencies.

PERMACULTURE GARDEN

SERCUL staff and community volunteers are developing a demonstration permaculture garden in the grounds surrounding the homestead. The garden will provide a facility for organisations working with the disability services clients and other community members.



Tracy and John working in the Beckenham Open Space



Yulebrook Homestead - new verandah and paving



Western Power landscaping



Permaculture garden implementation

ADMIN & OTHER COMMUNITY CAPACITY ACTIVITIES



Sandy working on the figures



Ute made possible by Bendigo Bank sponsorship



Friends of McDougall Park volunteers at the lake



Friends of G.O. Edwards Park Workshop

FINANCIAL ADMINISTRATION SUPPORT TO COMMUNITY NRM GROUPS

The SERCUL financial management officer, Sandy Wainwright continues to provide financial management assistance to the following Community groups in the SERCUL area:

- \$ Canning River Regional Park Volunteers
- \$ Junkbusters
- \$ Wilson Wetlands Action Group Inc.
- \$ Bannister Creek Catchment Group Inc
- \$ Two Rivers Catchment Group Inc
- \$ Armadale Gosnells Landcare Group Inc
- \$ Friends of McDougall Park (Sth Perth)
- \$ Friends of G.O. Edwards Park (Vic Park)

\$ BENDIGO BANK SPONSORSHIP \$

The Bendigo Community Bank in Gosnells Sponsorship of \$20,000 has enabled SERCUL to purchase a 4WD ute to support landcare in the region. SERCUL, the community and the environment is very grateful for this support

VOLUNTEER ADMIN SUPPORT

Many thanks to all our administration volunteers, your commitment to SERCUL and the environment is highly valued and appreciated. Special thanks to Robyn Walters, who manages the SERCUL website on a weekly basis and to Monica Estrada who assists Julie in developing a more useful budget management process.

FRIENDS OF MCDOUGALL PARK

The group meets on the first Sunday of the month at the Hazel McDougall House. The group are progressing with the development of a logo pending and stencilling drains around the lake to increase community awareness.

FRIENDS OF G.O. EDWARDS PARK

SERCUL facilitated a workshop & breakfast with the volunteers and local community. Planting around the edges of the lake has occurred and the Town of Vic Park are continuing to work with the group to improve the lake foreshore & island habitat.

AUDITORS REPORT AND FINANCIAL REPORTS

R.T. KIDD & ASSOCIATES
Certified Practising Accountant
Registered Company Auditor



**INDEPENDENT AUDITOR'S REPORT TO THE MEMBERS OF
SOUTH EAST REGIONAL CENTRE FOR URBAN LAND CARE INC (SERCUL)**

Scope
I have audited the attached financial statements of SERCUL, which has been classified as a non general purpose account, for the year ended 30th June 2009.

SERCUL's Management Committee are responsible for the preparation and presentation of the financial statements and the information they contain. The Committee determines the accounting policies used so as to meet the needs of the members. I have conducted an independent audit of these accounts in order to express an opinion of them to the members.

I disclaim any assumption of responsibility, for any reliance on this report or these accounts, to any persons other than the members, or for any other purpose other than for which they were prepared.

My audit has been conducted in accordance with Australian Auditing Standards to provide reasonable assurance as to whether these accounts are free of material misstatements. My audit procedures include an examination, on a test basis, of evidence supporting the amounts shown in these accounts. These tests have been undertaken to form an opinion as to whether, in all material respects, these accounts are fairly presented.

My audit opinion expressed in this report has been formed on this basis.

Audit Opinion
In my opinion the financial statements present fairly the operating result of SERCUL for the 2008/2009 year and its financial position at 30th June 2009.



Signature of Auditor:
Name of Auditor:
Firm:

**RODNEY THOMAS KIDD
R T KIDD & ASSOCIATES
66 BAY VIEW TERRACE
CLAREMONT WA 6010**

19th August 2009

(P) 18 118 1131, (M) 011

All correspondence - 66 Bay View Terrace Claremont W.A. 6010 -
Telephone: (08) 9385 4135 Facsimile: (08) 9385 4170 Mobile: 0417 140 036
A.B.N.: 15420600258
Email: rt.kidd@bigpond.com.au

12:38 PM
 27/07/09

South East Regional Centre for Urban Landcare

Balance Sheet

As of June 30, 2009

	Jun 30, 2009
ASSETS	
Current Assets	
Current/Savings	
Bendigo cash mgntment 136248101	679,153
Bendigo Term Investment 1386413	5,000
Bendigo working a/c 136248010	64,518
Petty Cash	200
Petty cash - PAG	98
Total Current/Savings	748,969
Accounts Receivable	
Accounts Receivable	31,318
Total Accounts Receivable	31,318
Total Current Assets	780,287
Fixed Assets	
Computer Equipment	
Prov. for depn Computer equip.	-44,332
Computer Equipment - Other	48,073
Total Computer Equipment	3,742
Motor Vehicle at cost	
Prov. for depn Motor Vehicle	-13,114
Motor Vehicle at cost - Other	63,591
Total Motor Vehicle at cost	50,477
Office Equipment	
Prov for depn Office Equipment	-27,480
Office Equipment - Other	39,589
Total Office Equipment	12,089
Plant & Equipment	
Prov for depn Plant & Equipment	-4,969
Plant & Equipment - Other	9,133
Total Plant & Equipment	4,165
Total Fixed Assets	70,472
TOTAL ASSETS	850,759
LIABILITIES	
Current Liabilities	
Other Current Liabilities	
Grants in advance	297,320
Payroll Liabilities	19,025
Tax Payable	29,387
Total Other Current Liabilities	345,732
Total Current Liabilities	345,732
TOTAL LIABILITIES	345,732
NET ASSETS	505,028
EQUITY	
Retained Earnings	482,721
Net Income	22,307
TOTAL EQUITY	505,028

12:37 PM

27/07/09

South East Regional Centre for Urban Landcare

Profit & Loss

July 2008 through June 2009

Jul '2008 - Jun 2009

Ordinary Income/Expense

Income

Admin In	79,634
BCLS Typha Program.	5,706
Beckenham Memorial Park.	-10,625
Bickley Brook	9,091
CFOC Employment	210,000
CFOC Operating costs	25,000
City of Canning CLC	40,000
City of Joondalup	2,580
City of Melville	560
Contract labour in	-6,703
Donations and income	1,520
DPI-salary in	50,700
Employment Insurance	13,854
Employment.	47,431
GO Edwards Park	250
GVEHO	2,300
HR & Training.	18,415
Interest received	25,500
Laggards-Wages Insurance Admin	69,620
Lotterywest	15,329
LSL Liability.	12,701
McDougall Park-Friends of	2,500
Nth Forrestdale-Education	37,352
On Ground.	
Jute matting	-855
Mulch	-2,500
Plants	-2,863
Volunteer support	-250
Weed control	2,000

Total On Ground. -4,467

PAG operating costs	14,804
Project supervision	180
Promotions in	1,323
Rehoboth HS	1,596
Reimbursements	11,283
Reimbursements- DPI	24,400
SGIO Grant 09	4,356
SRT Grants	250,000
Staniland Rd Project.	586
Stinson	1,650
Tarun Ct Basin	2,508
Vehicle	18,522
Water Quality Monitoring	875
Western Power.	
Hard Screening	50,000
Total Western Power.	50,000
Wharf St 09-10	0
Wharf St On ground labour	29,275
Worldwide Printing-Masons L.	770

Total Income 1,080,082

Gross Profit 1,080,082

Expense

Admin

Books/Publications	4,061
Communication/computer	6,864
Insurance	4,064
Office equipment	3,179
Office Grounds	409
Office Maintenance	1,160
Postage	487
Promotion	11,585
Stationery	1,881
Subscriptions	264
Utilities	1,424
Volunteer support	2,896

12:37 PM

27/07/09

South East Regional Centre for Urban Landcare

Profit & Loss

July 2008 through June 2009

	Jul '2008 - Jun 2009
Admin - Other	60,995
Total Admin	99,248
Audit	750
Bank Service Charges	218
BCLS Typha Program	5,705
C of SP - CDRG	1,385
Canning River Fish Passage.	
Materials/equipment hire	8,000
River remediation.	1,490
Total Canning River Fish Passage.	9,490
City of Melville.	560
Contract Labour	51,787
CPMP.	5,486
Depreciation Expense	18,167
Donations & Income	413
Employment Insurance.	16,583
Employment.	35,235
Eugene's Water Quality Project	165
GO Edwards Park.	250
HR & Training	33,791
Laggards-Vehicle Operation Exp.	4,033
Laggards-Wages Ins Admin	44,820
Lotterywest.	15,329
LSL Liability	12,701
Mobile phone	1,067
Nth Forrestdale Consultancy	14,712
On Ground	
Equipment	4,614
Plants	15,407
Volunteer support	120
Weed control	12,355
On Ground - Other	186
Total On Ground	32,683
PAG-oper costs	
Operating costs	17,992
Total PAG-oper costs	17,992
Payroll Expenses	469,392
Promotions	28,061
Reimbursement	6,147
Reimbursement-DPI	24,409
Staniland Rd Project	123
Stinson.	619
Taro Project-C of G.	109
Tarun Ct Basin.	869
Town of Kwinana	
Green stock maintenance	2,995
Total Town of Kwinana	2,995
Travel	18,648
Vehicle operation expenses	5,032
Water Quality Monitoring.	5,478
Western Power	
Hard screening	48,443
Plant screening	3,782
Total Western Power	52,225
Total Expense	1,037,775
Net Ordinary Income	22,307
Other Income/Expense	
Other Expense	
Asset purchases-Computers	0
Asset purchases-Motor Vehicles	0
Asset Purchases-Office equip	0
Asset Purchases - Plant & Equip	0
Total Other Expense	0
Net Other Income	0
Net Income	22,307

Page 2

STATEMENT BY THE MANAGEMENT COMMITTEE

SOUTH EAST REGIONAL CENTRE for URBAN LANDCARE (INC.)

In the opinion of the Members of the Committee:

- (a) The accompanying Profit and Loss Statements is drawn up so as to give a true and fair view of the results of the Group for the year ended 30th June 2009.
- (b) The accompanying Balance Sheet is drawn up so as to give a true and fair view of the state of affairs of the Group as at the end of that period.
- (c) At the date of this statement there are reasonable grounds to believe that the Group will be able to pay its debts as and when they fall due.

The Accounts of the Group have been prepared in accordance with applicable Australian Accounting Standards.

Signed in accordance with a resolution of the Committee.


Treasurer

Date 15th October 2009


Chairperson

Date 15th October 2009

NEW 2009-2010 PROJECTS

CANNING & SOUTHERN RIVERS URBAN DRAINAGE RENEWAL PROJECTS

The Department of Water, Swan River Trust, three Local Government Authorities and SERCUL have developed three major drainage renewal projects to implement a \$4,000,000 federal government grant that was promised during the last federal election. The project implementation is also guided by the Swan River Trust Water Quality Improvement Plans for Bannister Creek, Bickley Brook and Southern River. SERCUL will continue to work with the agencies to assist them to ensure that the projects are implemented to maximise the improvement to water quality and facilitate long term NRM capacity in the Canning and Southern Rivers.

The City of Canning have supported a project in Bannister Creek to remove major weed infestations, stabilise the waterway and install water quality improvement infrastructure. The Bannister Creek Catchment Group and SERCUL will assist to implement the works, remove weeds and restore the native vegetation.

The City of Gosnells have supported four projects within the Bickley Brook to remove weeds, improve water quality, install water quality improvement infrastructure and implement “drains to living streams” transformations. The Armadale Gosnells Landcare Group and SERCUL will assist to implement the works, remove weeds and restore the native vegetation.

The City of Armadale have supported six projects within the Wungong & Southern Rivers catchment. The projects will include major plantings, remove weeds, improve water quality, install water quality improvement infrastructure and implement “drains to living streams” transformations. The Armadale Gosnells Landcare Group and SERCUL will assist to implement the works, remove weeds and restore the native vegetation.

These projects will be kindly funded by the Australian Government Department of Water, WA Dept of Water, Local Governments and Community Groups.



Bannister Creek in Lynwood, eroded banks to be restored



A site in Bickley Brook @ Mandarin Rd, Maddington



Third Road drain in Armadale, to be restored

NEW 2009-2010 PROJECTS

HOLLOWS MONITORING PROGRAM

This project will allow SERCUL to purchase a portable telescopic camera to monitor tree hollows and artificial hollows across the South West. The project will also allow the group to install artificial hollows to provide critical nesting habitat for Endangered Black Cockatoos.

This project kindly supported by the DEC Community Environment Grants.

KAARAKIN CENTRE -

BLACK COCKATOO PRESERVATION SOCIETY & WILDLIFE AUSTRALIA

Kaarakin Centre is a new wildlife refuge located in Martin, WA. Kaarakin is run by the Black Cockatoo Preservation Society in partnership with Wildlife Australia.

This project is targeted at providing food, shelter and medical assistance to improve the quality of life for the dependant fauna at Kaarakin.

RESTORATION SITES 2009-10

- Centenary Park Wetland, Central Belmont Main Drain DNIP Projects, City of Belmont, will commence late 2009
- Anvil Way Compensation Basin DNIP Project, City of Canning, commences end of 2009
- Tarun Court Compensation Basin, Wharf St Drain Catchment, City of Canning. A maintenance implementation contract will be delivered by SERCUL during 2009/10
- River Loop Restoration, Roleystone, Perth Region NRM/Caring for our Country funded. Weed control and revegetation implementation will be commence.



Red Tail Black Cockatoo to be protected



River Loop Restoration Site, Roleystone



Monica Estrada

NEW STAFF AT SERCUL

- **Monica Estrada** has commenced at SERCUL two days a week to manage volunteers and volunteering opportunities. Monica will be streamlining the volunteer process and setting up a web based volunteer management system.

This project kindly supported by the DEC Community Environment Grants.

- **Jake Usher** recently joined the staff as a Landcare Trainee. Jake has been volunteering for SERCUL since May 09 and will now study at TAFE and work at SERCUL to learn the landcare trade.



John and Tom teaching Jake about Landcare

ACKNOWLEDGEMENT OF FUNDING PARTNERS

The South East Regional Centre for Urban Landcare acknowledges and sincerely thanks the following Australian Government Departments, State Government of WA Departments, Natural Resource Management organisations, Private Businesses, Local Governments, and Community groups for their financial and in-kind contributions which has led to the success of our project delivery for the 2008-2009 year.



CARING
FOR
OUR
COUNTRY



TOWN OF
VICTORIA PARK



— City of —
Melville



Australian Government



CITY OF **Armadale**



CITY of PERTH




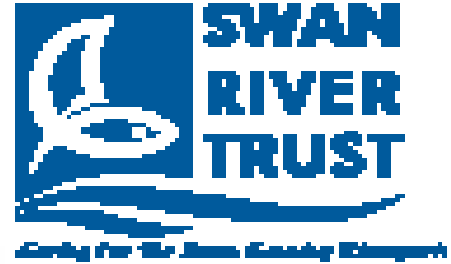
TOWN OF
BASSENDEAN
Home by the Swan





Department of
Environment and Conservation

Our environment, our future 



Men of the Trees



TOWN OF VINCENT



Department of Water
Government of Western Australia



Gosnells
Community Bank Branch Bendigo Bank



THANK YOU

The South East Regional Centre for Urban Landcare Inc. Committee and Staff sincerely thank all the Community groups, Non Government Organisations, Volunteers, Local Government Authorities, State and Australian Government Departments, and Private Business project partners for your contribution towards the care and protection of the Natural Resources of the Swan Region during the 2008-2009 year. We look forward to continuing our partnerships in 2009-2010 to achieve an even more sustainable approach to Natural Resource Management in Perth, Western Australia.

Good luck for 2009-2010



South East Regional Centre for Urban Landcare Inc.

69 Horley Road Beckenham WA 6107

Phone: 94585664 Facsimilie: 94585661

Email: julierobert@sercul.org.au

Website: www.sercul.org.au



69 Horley Road BECKENHAM WA 6107
Phone: 08 94585664 Fax: 08 94585661
Email: julierobert@sercul.org.au
Website: www.sercul.org.au