

# 2011

## SERCUL ANNUAL REPORT

*Community improving the health of our land and waterways*



**S E R C U L**

South East Regional Centre for Urban Landcare



## CONTENTS

Achievements and Highlights 2010-2011	3
SERCUL Committee	4
Feedback	4
SERCUL Staff 2010-2011	5
SERCUL Constitution	6
NRM Organisational Structure	7
From the Chair	8
From the CEO	9
SERCUL NRM Program Areas	10
Phosphorus Awareness Project	11
Fertilise Wise Fertiliser Training	12
Clean Drains River Gains	12
Seminars, Workshops and Events	13
Water Quality Partnership	14
Drainage Nutrient Intervention Program (DNIP)	15
Canning River Restoration and Natural Diversity	16
Canning River Post Fire, Hydrocotyle, CVA-Chevron	17
City of Canning Community Landcare	18
Bannister Creek Catchment Group	19
Two Rivers Catchment Group	19
Armadales Gosnells Landcare Group	20
Sustainable Production Activities	21
Urban Waterways Renewal Project	22-24
Urban Waterways Renewal Monitoring & Research	24-25
Beckenham Open Space and Homestead	26
Environmental Services	27
Volunteer Coordination	28
Administration and Community Capacity	29
Auditors Report and Financial Reports	30-37
Statement by Management Committee	38
New Projects	39
New Staff	40
Thank You	41
Acknowledgements	42-43





## ACHIEVEMENTS AND HIGHLIGHTS OF 2010-2011



Successfully produced two brochures, an ID guide and three short films in partnership with Murdoch University Fish Health Unit as part of the Freshwater Fauna Education Project funded by Lotterywest

State & Federal Govt NRM Grants = \$3,284,271

Local Govt Grants = \$148,000

Other Project \$ Attracted = \$632,000

Volunteer Contribution > 19,472.25 hrs

\$ Value of Volunteering = \$24.09/hr

\$ Total Value of Volunteering > \$469,087.5

Plants Planted = 307,315

94 Waterway sites sampled and 217 samples were analysed in the Perth Region

10,990 > People received education, via direct information or onground contact.



Urban Waterways Renewal Launch



Freshwater Fauna Roadshow Launch



Fertilise Wise Fertiliser Training



CVA Chevron Partnership



## SERCUL COMMITTEE 2010-2011

### EXECUTIVE COMMITTEE

Chair	Mrs Pat Hart
Vice Chair	Mr Marc Lane
Treasurer	Mr Cam Clay
Member	Mr Brian Aldrich
Secretary	Provided by SERCUL

### COMMUNITY COMMITTEE MEMBERS

Margaret Mathews  
David James  
Russell Gorton  
Dick Stone  
1 Position Vacant

### STATE GOVERNMENT AGENCIES AND LOCAL GOVERNMENT AUTHORITIES REPRESENTED

Swan River Trust  
City of Armadale  
City of Belmont  
City of Canning  
City of Cockburn  
City of Fremantle  
City of Gosnells  
Town of Kwinana  
City of Melville  
City of South Perth  
Town of Victoria Park



SERCUL Executive Committee



Pat and Julie with Trish Pedelty, DoW

## FEEDBACK DURING 2010-2011

*"Thanks Julie. I have learnt so much from SERCUL and hugely admire the achievements and dynamism of everyone involved. Extraordinary stuff. Great leader out there!!"*

**Karen Wertheimer, Community Engagement Program Manager, Swan River Trust.**

Anvil Way Comp Basin Restoration and Living Stream Project.

*"I commend SERCUL for its efforts and the vital part that it has played in this and many other projects to improve water quality entering the Swan and Canning rivers. The Swan River Trust looks forward to continuing this partnership on future projects to protect the Swan and Canning rivers."*

**Rod Hughes, General Manager, Swan River Trust.**

*"I am writing on behalf of the Friends of Wireless Hill to thank SERCUL for the efforts of Tracy Evans and John Maliunas in hand weeding at Wireless Hill. They are now employed on our second Swan Alcoa Landcare Program grant and the impact of their work is becoming apparent."*

**Margaret Matthews, Convenor, Friends of Wireless Hill.**





## SERCUL STAFF 2010-2011

### STAFF EMPLOYED DURING 2010-2011

Chief Executive Officer: Julie Robert  
Financial Administration Manager: Sandy Wainwright  
Financial Administration Assistant: Jose Alcala  
Education and Promotion Manager (PAP): Amy Krupa  
Education Officer (PAP): Dot Hepburn  
Promotion Officer: Melinda Snowball  
Landcare Services Manager (DNIP): Tom Atkinson  
Urban Waterways Renewal Manager: Ana Terrazas  
Urban Waterways Renewal Officer: Glen Byleveld  
Urban Waterways Renewal Officer: Brett Kuhlmann  
Urban Waterways Renewal Officer: Annick DeLange  
Canning River/Natural Diversity Officer: Matt Grimbly  
Landcare Officer: Melinda Snowball  
Landcare Officer: Amy Warner  
Landcare Officer: John Maliunas  
Landcare Officer: Tracy Evans  
Landcare (Trainee): Jake Usher  
Water Quality Officer: Monica Estrada  
Volunteer Coordinator: Monica Estrada  
Phd Researcher: Paul Lock  
Honours Student: Bonita Clark

### STAFF DEPARTURES

**Tom Atkinson** - the resignation of long term employee and native grass fanatic, Tom Atkinson, in June 2011 was accepted with much regret. The SERCUL team thank Tom for his long term commitment of eight years to SERCUL and on behalf of all the bushland, wetlands, rivers and landcare professionals we say THANK YOU SO MUCH and keep in touch. Tom's position as Landcare Services Manager has been recently filled with the employment of Brett Kuhlmann.

**Dot Hepburn** - was employed as an Education Officer, from February to July, assisting with the Phosphorus Awareness Project. We thank Dot for her work while she was at SERCUL and wish her well teaching full time in the classroom.

**Annick DeLange** - worked on the Urban Waterway Renewal Project conducting vegetation surveys from September to February. We wish Annick the best of luck in her future endeavours.

**Jake Usher** - undertook a Landcare Traineeship with SERCUL until October 2010.

**Ana Terrazas** - went on maternity leave between January and May 2011 when her beautiful baby boy Lorenzo entered the landcare world.



SERCUL Team Building Training



SERCUL Christmas Party, Sailing on the Swan River



SERCUL Team Building Activity



Lorenzo at his First Planting Day



## SERCUL CONSTITUTION

### VISION

To have, as a given, the Natural Resources of the South Region of Perth managed in a healthy and sustainable manner by all stakeholders for future generations.

### MISSION

The aim is to use integrated natural resource management to develop cultural change in how the community views and interacts with the environment while promoting and actively participating in, the improvement of the health of waterways and other ecosystems within the South Region.

### OBJECTIVES

1. Identify priority Natural Resource Management issues in the South Region in partnership with Local Government, State Government and Industry.
2. To ensure biodiversity within the South Region is monitored, protected and enhanced.
3. Develop and assist community, State and Local Government in the coordination of Natural Resource Management in the South Region.
4. Support and encourage the implementation of best management practice of Natural Resources within the South Region.
5. Recognise and embrace Aboriginal, Cultural and Natural heritage.
6. Foster research on matters relating to the South Region's Natural and Cultural heritage.
7. Work in partnership with Local Government, State Government and industry to educate the wider community to protect our Natural Resources.
8. Support and encourage the formation of community environment groups.
9. Administer the South Regional Urban Landcare fund to promote the objectives and outcomes of the Association.





## THE NRM ORGANISATIONAL STRUCTURE IN PERTH

SERCUL is a sub-regional body that operates in the metropolitan and peri-urban areas of the Swan Catchment. The area covered takes in most of the southern and eastern suburbs of Perth and includes Dyarguu (the Canning River), the Southern-Wungong River and parts of Derbarl Yerrigan (the Swan River). This is shown in the map below:

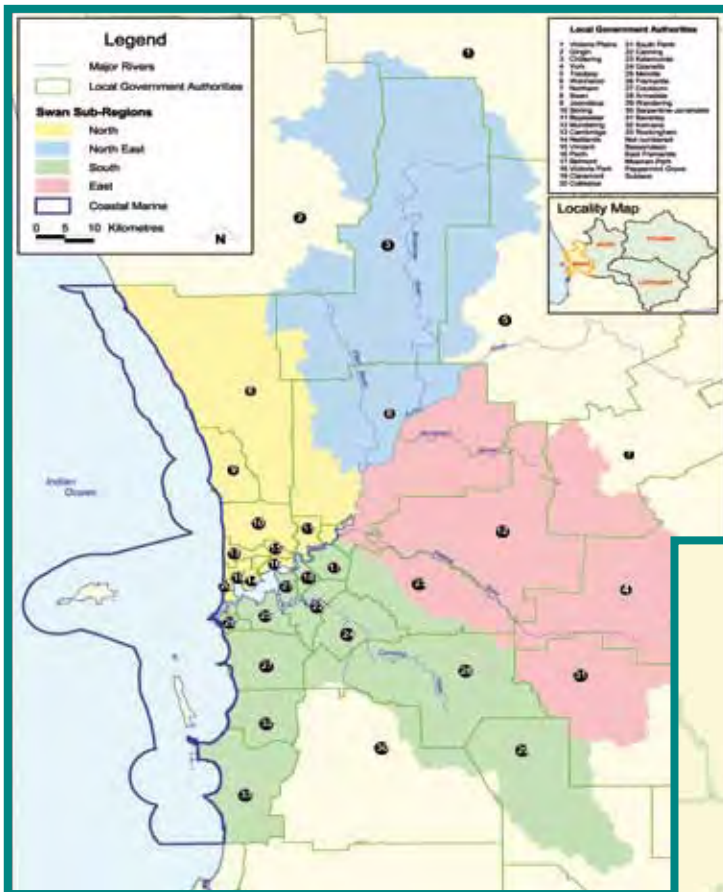


Figure 1: Division of the Swan NRM Region into five Sub regions

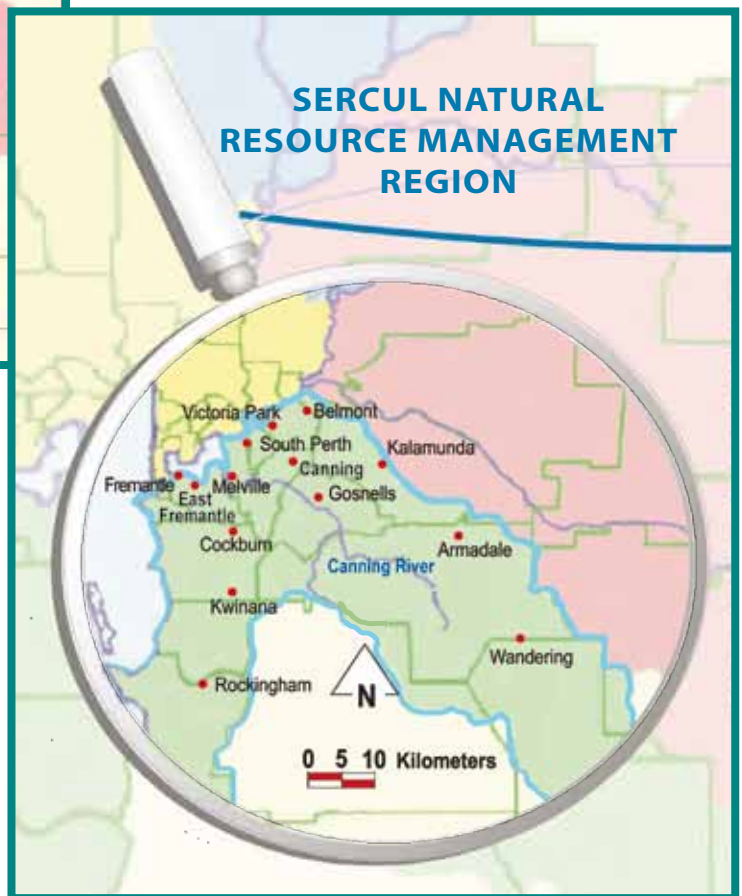


Figure 2: South Sub Region

The South Region is defined as consisting of those parts of the Cities of Armadale, Belmont, Canning, Cockburn, Fremantle, Gosnells, Melville, Rockingham, South Perth, Shire of Kalamunda and Towns of East Fremantle, Kwinana and Victoria Park which fall within the boundary of the Natural Resource Management Region of the Swan Region.



## FROM THE CHAIR - Pat Hart



My executive committee and I wish to acknowledge our appreciation and admiration of the outstanding work being achieved by SERCUL staff. Their commitment and dedication is a credit to them all – a great team to be involved with. I know this sentiment is shared by all the SERCUL Committee members and those associated with SERCUL.

We also recognise the amazing results being achieved by the many community organisations working tirelessly out in the broader catchments. Our thanks and acknowledgement go to our many partners in the various Local Governments and Government Agencies for their excellent support and cooperation in the implementation of the numerous projects we are jointly undertaking.

A special mention also of the many volunteers who have assisted SERCUL over the past 12 months. These volunteers from all walks of life and countries have undertaken a wide range of tasks and have certainly added so much value to the day to day running of SERCUL and our projects.

The large Urban Waterways Renewal projects that SERCUL is currently undertaking with the Cities of Armadale, Gosnells and Canning have given numerous challenges for our staff and partners but have also led to many positive experiences and new found knowledge. A broad range of science that SERCUL believes is critical in all projects undertaken is well and truly imbedded into this major program. A special mention must be made of Amy Krupa's Phosphorus Awareness Project which has further strengthened SERCUL's relationship with Local Government. Training is now being conducted by Challenger Institute of Technology for Local Government employees to gain a further understanding of the benefits of wise fertiliser use.

Another excellent achievement this year is the publication of 'A Field Guide to Freshwater Fishes, Crayfishes and Mussels of South Western Australia' which includes two pamphlets and three films. This key project was achieved through a partnership between SERCUL and the Murdoch University Freshwater Fish Group and Fish Health Unit with funding from Lotterywest. All proceeds from the sale of this book will be used to support further research and efforts to protect remnant aquatic habitats and help prevent further losses of native fauna.

We appreciate and acknowledge the Swan River Trust whose key funding component is critical to SERCUL. The partnership we have enjoyed over the past years and the excellent support from all their officers is very much appreciated.

As you can see by the above it has been an extremely busy but exciting twelve months where SERCUL continues to play an important role in the delivery of Natural Resource Management projects while at the same time supporting community groups.

A special thanks to our Chief Executive Officer Julie Robert whose drive and ability in the overall management of SERCUL is outstanding.

October 2011



## FROM THE CEO - Julie Robert



The SERCUL staff and committee have had an extremely busy year developing and implementing restoration activities in 15 new project sites. SERCUL is currently involved in 43 projects with 17 part time & full time staff.

The onground project delivery has been extremely successful with the planting of more than 300,000 local native plants and numerous hectares of weed control in bushland, wetland and river foreshores across the region.

The implementation of 11 new Australian Government funded Urban Waterway Renewal and State NRM projects created an expected increase in workload for all SERCUL staff, particularly at the administrative level. Many thanks to Dr Judy Fisher (Ecologist), who is assisting SERCUL staff to develop thorough methods of scientific evaluation and monitoring of the UWR projects and progressively integrating these methods into other SERCUL projects where appropriate. Working in partnership with Local Government Authorities and State Government Agencies in developing and delivering the new projects has been a pleasure.

The Education & Promotions Program has had a boost this year with the addition of a part time officer to assist Amy Krupa to undertake the implementation of the new FertiliseWise Training Program and extend the education program. I thank Amy Krupa, who continues to efficiently promote the education program across the entire Perth metropolitan area while also sharing the caretaker role of CEO when I am absent.

The SERCUL team have been diligently progressing with the development of a strategic futures direction plan which is due in draft completion by mid November 2011. The staff and executive committee were involved in exciting team training opportunities and progressive professional development during the year. Volunteering at SERCUL has increased extensively with the continuation of the part time Volunteer Coordinator role. Volunteer hours have totalled 19,472.25.

The employment of new staff at SERCUL has been very successful with a few staff changes and the addition of several new positions. SERCUL has successfully employed a small casual pool of landcare staff, some of whom were practiced volunteers, who I thank for helping us to achieve the tremendous onground outcomes.

The SERCUL organisation in this financial year increased its turnover by 109% and I would like to sincerely thank Sandy Wainwright and Jose Alcala for helping me to manage the financial administration of SERCUL in a transparent and absolutely accountable manner.

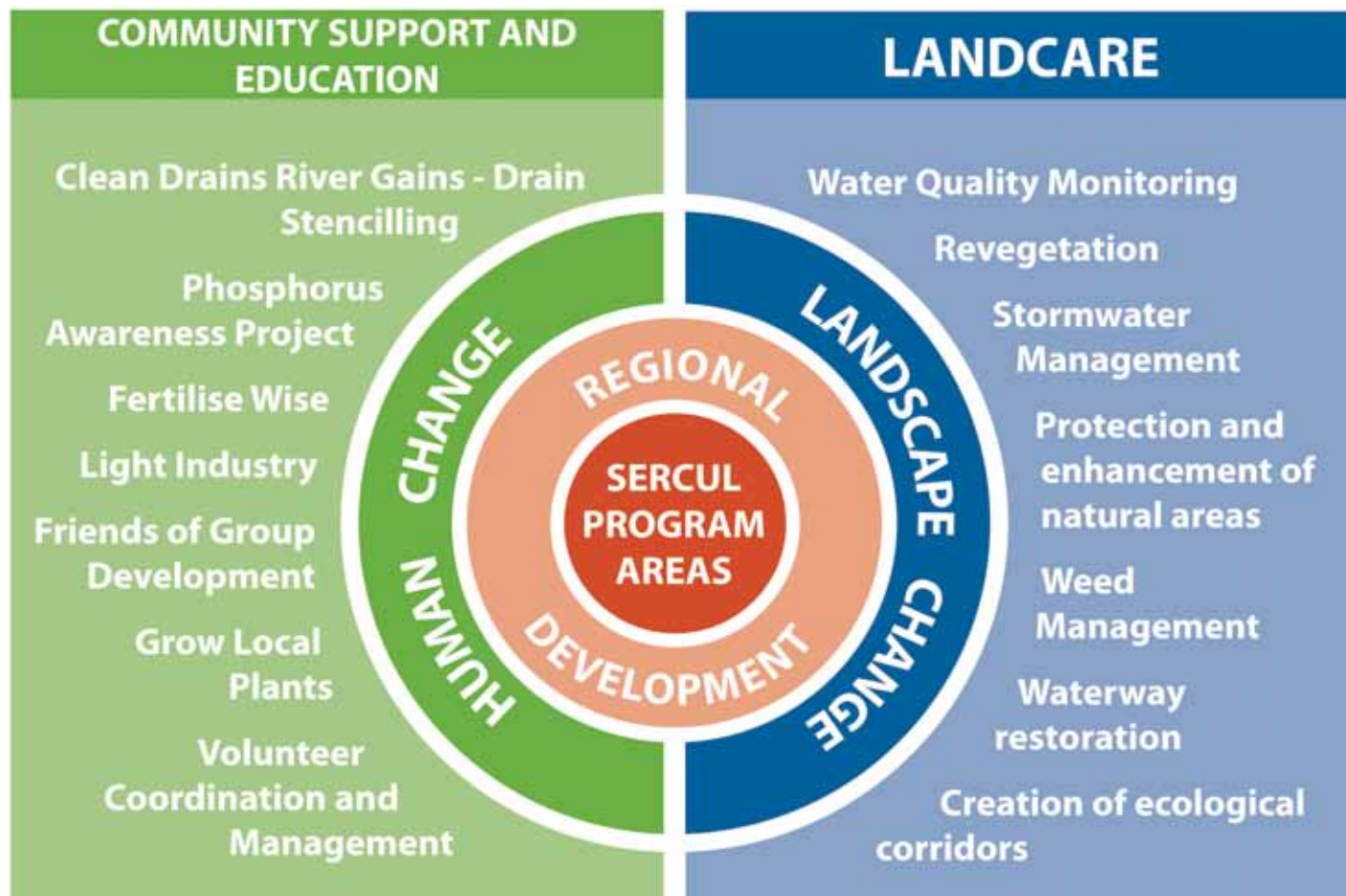
I would also like to express my sincerest thanks to the SERCUL committee members and community groups who also continue to provide support to SERCUL. I thank Pat Hart for her dedication to catchment management and NRM across our region and for her support to me personally and professionally. To Cam, Brian and Marc a huge thank you for helping me upgrade and enhance the governance procedures of SERCUL. I also thank Bonita Clark, who was our very diligent minute secretary, filling a very necessary gap until Mrs Yvonne Ward offered her practiced skills to SERCUL as our minute secretary.

Finally I thank all the SERCUL staff for their confidence in me as the CEO and thank them sincerely for their dedication and support during the year. I hope SERCUL can continue to professionally guide and grow their aspirations in the landcare field and I look forward to sharing many successes with all of the SERCUL team in the next year.

October 2011



## SERCUL NRM PROGRAM AREAS





## EDUCATION ACTIVITIES

### PHOSPHORUS AWARENESS PROJECT

Coordinated by Amy Krupa & Dot Hepburn

This project is an education campaign for the general community educating them to decrease their nutrient outputs and thus algal blooms in the Swan & Canning River Systems.

**DISPLAYS** - 15 displays at Garden Week, festivals and fairs with over 4300 people spoken to

**SCHOOL PRESENTATIONS** - 184 presentations to over 5100 students from Kindy to Year 12

**SCHOOL PLANTING SESSIONS** - 4070 plants planted at 28 planting sessions, 635 students, 770 volunteer hours totalling \$18,500 volunteer value

**COMMUNITY PRESENTATIONS** - 30 presentations to 960 people

**LGA ANNUAL NUTRIENT SURVEY** - 2011 survey sent in June. Have received 22 responses and report currently being written

**SUPPORTED GROUPS WITH PROJECT RESOURCES** - on 60 occasions

**CANOEING ON THE CANNING** - hosted three with 80 teachers and community members attending this professional development workshop

**CATCHMENTS, CORRIDORS AND COASTS** - on the organising committee and presented at this three day course attended by 32 participants

**FERTILISE WISE PROJECT** - >6000 of all five brochures distributed

**GROW LOCAL PLANTS PROJECT** - >4900 of all five brochures distributed

**BROCHURE DISTRIBUTION** - >17200 Phosphorus Awareness Project items distributed

**ARTICLES** - about the Project in newspapers and newsletters on 21 occasions

**EDUCATION NEWSLETTER** - four per year to 250 schools and teachers

**CAR** - a VW Caddy has been purchased for the PAP and is a moving advertisement about keeping our rivers healthy.



Frog Talk at Mary Carroll Lake



Canoeing on the Canning



Catchments, Corridors and Coasts 2011



The VW Caddy - a Moving Advertisement

Kindly funded by the Swan River Trusts Healthy Rivers Program and the Australian Governments Caring for our Country Program.



## EDUCATION ACTIVITIES

### FERTILISE WISE FERTILISER TRAINING

Coordinated by Amy Krupa

The Fertilise Wise Fertiliser Training for Turf Managers was officially launched on the 19th April 2011 at the Canning River Eco Education Centre.

The training is organised by SERCUL, supported by the WA Local Government Association and delivered by John Forrest, a lecturer in turf management at Challenger Institute of Technology. The program aims to train turf managers and Local Government officers in fertiliser best management practices, specific to Perth. The training consists of two half days.

Achievements include:

- Launch event attended by 40 people with Pat Hart launching the program and WALGA President Troy Pickard supporting the program
- Five training sessions held with 90 turf managers trained

**Kindly funded by the Swan River Trust through the Australian Governments Caring for our Country Program.**



WALGA President Troy Pickard with Julie and Amy



John Forrest with Participants at a Training Session

### CLEAN DRAINS RIVER GAINS PROJECT

Coordinated by Amy Krupa & Ana Terrazas

The project raises the awareness of the link between stormwater drains and natural waterways and provides information to community on how they can make positive behavioural changes that will see a reduction in pollutants entering creeks, lakes, rivers and wetlands.

Achievements include:

- Seven stencilling sessions held in Dalkeith, Forrestfield, Leeming and Kardinya.
- 1005 drains stencilled by students from Dalkeith PS, Woodlupine PS and All Saints College.
- 135 volunteers contributed 260 volunteer hours to the project.
- Project promotional materials including brochure, postcard and pull up banners updated and reprinted.

**Kindly funded by Landcare Australia through the Qantas Foundation.**



All Saints College Students Stencilling



Stencilling a Drain in Leeming





## EDUCATION ACTIVITIES

### FRESHWATER FAUNA PROJECT

Coordinated by Julie Robert, Melinda Snowball & Amy Krupa

SERCUL in partnership with Murdoch University's Freshwater Fish Group and Fish Health Unit have produced an educational package on Freshwater Fauna of South-western Australia. Two brochures, a field guide and three short films have been made which will be distributed throughout the south west to relevant organisations, businesses, educational centres, community groups and many more.

On the 3rd August 2011, SERCUL and Murdoch University launched the educational resources at the Canning River Eco Education Centre. These new publications will be presented at different locations throughout the South-west on the Freshwater Fauna Roadshow Tour.

Achievements include:

- Launch event attended by 50 people with Environment Minister Bill Marmion launching the project.
- Three Roadshow events held in Ellenbrook, Mandurah and Bunbury with 180 people attending.

**Kindly funded by Lotterywest.**



**Freshwater Cobbler**



**Freshwater Mussel**



**Jack Johnson with a Fertilise Wise Stubby Holder**

### FERTILISE WISE FERTILISER ENDORSEMENT PROJECT

Coordinated by Paul Lock, Julie Robert & Amy Krupa

Achievements include:

- New website launched - [www.fertilisewise.com.au](http://www.fertilisewise.com.au)
- Three companies have had preliminary meetings or have requested information about being Fertilise Wise endorsed.
- Promotion of the project at the Jack Johnson concert.

### COMMUNITY SCIENCE TALKS

SERCUL hosted one science talk on terrestrial invertebrates at the Canning River Eco Education Centre. David Knowles presented about these species to 48 attendees.



**Orb Weaver Spider**



## NRM PROGRAM ACTIVITIES

### WATER QUALITY PARTNERSHIP

Coordinated by Monica Estrada

This project has been supported by the Local Government Authorities involved and by Perth Region NRM, through funding from the Australian Government's Caring for our Country Program until June 2011 and since then by the Swan River Trust. The project aims to promote a cooperative approach to water quality monitoring (WQM) across the Perth Region. SERCUL's main role, in conjunction with the Aquatic Sciences Branch of the Department of Water, is to assist stakeholders to assess their water quality data requirements, provide assistance in the preparation of sampling and analysis plans, undertake sampling and write annual reports.

Key achievements 2010 - 2011:

- Four water quality monitoring programs conducted: Bayswater Brook, Bennett Brook Catchment, Bull Creek Catchment and Stormwater in the City of Belmont and their respective reports were prepared.
- Five Local Governments engaged in the Perth metropolitan area.
- The data has been providing information for the Swan River Trust and for the Department of Water calibration models.
- An analysis of the nine-year sampling water and sediments quality results from Bennett Brook was done to classify 'hot spots' and 'general' sites; sampling frequency was increased for 'hot spots' sites.
- Assistance to the Department of Water in the monthly water quality sampling at DNIP projects (eight projects and 379 samples from January to September 2011) and to the City of Bayswater in water quality and sediments sampling at Bassendean (14 samples from July to September 2011) and Bennett Springs (12 water samples 10 sediment samples from July to September 2011).
- Initiation of the analysis of the results of the water quality data the City of South Perth collected between 1994 and 2008. The first product, submitted in August 2011, included the data summations of water quality data from nine catchments within the city boundaries.

**Sample Sites: 94**

**Water Samples Analysed: 217**

**Sediment Samples Analysed: 46**

**Kindly funded by Perth Region NRM, through the Australian Government's Caring for Our Country Program and the Local Government Authorities involved.**



Sampling in Melville



Ascot Lakes, Belmont Sampling



South Perth, Hurlingham Lake - Ranelagh Inlet



Bayswater Sampling



## NRM PROGRAM ACTIVITIES

### DRAINAGE NUTRIENT INTERVENTION PROGRAM

Coordinated by Tom Atkinson

#### WHARF STREET WETLANDS PROJECT

The planting program has been completed for the Wharf St project with the vegetation establishing well. Ongoing weed management is required on site while the vegetation continues to establish and increases in density. The high acidity of subsurface drainage pits remain a concern for the project with options currently being considered for the treatment or removal of this media from the pits.

**Total Plants Planted = 5,620**

**Total Volunteer Hours = 120**

**Equalling \$2,891 worth of labour**

#### ANVIL WAY

A major reconstruction of this basin was completed during the summer. Contaminated sediment was removed and the basin remediated. The planting program has been completed for this project. Sedges within the wetland are establishing well and a native aquatic plant (Potamogeton) has established within the main channel. Weed management within the wetland and around the basin will be ongoing to enable the establishment of the vegetation. Further work is proposed to the channel downstream of the Anvil Way basin to stabilise the banks within this channel.

**Total Plants Planted = 39,250**

#### LIEGE STREET WETLAND PROJECT

The accumulation of potentially acidic sludge within the basin of the wetlands has affected macrophytes within the wetland. Tom Atkinson has developed a proposal to reduce the depth of the wetland in order to reduce the accumulation of organic matter in the bed of the wetland. The shallow waters will increase the oxygenation of the sediment, increasing the uptake of the available organic matter and reducing the formation of potential acidic sludge within the wetland. A works program to achieve this objective is being developed.

#### OTHER DNIP PROJECTS:

- **Bickley Rd Compensation Basin** - City of Gosnells
- **Centenary Park Wetland** - City of Belmont

**Kindly funded, and in partnership with, the Swan River Trust and Local Government Authorities.**



Wharf Street Wetland



Anvil Way Wetland



Bill Marmion and Joe Della Donna at Anvil Way



Centenary Park Wetland



## NRM PROGRAM ACTIVITIES

### CANNING RIVER RESTORATION AND NATURAL DIVERSITY SOUTH PROJECT

Coordinated by Matt Grimbly

#### CANNING RIVER PROJECT

The Canning River Project, now in its third year has focused on undertaking weed control and revegetation across five sites on the Canning River Foreshore equalling a total of 18.2 Ha. These sites were: Canning River Foreshore at Kent St, Wilson; Canning River Foreshore at Whitehouse Community Church, Nicholson Rd, Langford; Canning River and Yule Brook Foreshore at the confluence, Beckenham; Canning River Foreshore at the Corriedale Springs confluence, Thornlie; Canning River Foreshore at Goolamrup Reserve, Kelmscott. These priority sites had been selected on the basis of their habitat values and the level of stakeholder and community support for the projects.

**Total Plants Planted = 42,000**

**Total Volunteer Hours = 838**

**Equalling \$20,187 worth of labour**

Kindly funded through Caring for our Country, DEC Community Grants, State NRM Grants, Landcare Australia.

#### NATURAL DIVERSITY SOUTH PROJECT

##### WONS PROJECT (Weeds of National Significance)

The WONS project mainly focused on Blackberry and Boneseed control. Good progress has been made towards eradicating Blackberry from ecologically significant areas including the Canning River Regional Park and the Shreeve Rd Wetlands. The Boneseed control program is part of a wider program of eradication from Western Australia.

##### TEC'S PROJECT (Threatened Ecological Communities)

Focused on addressing key threats to these TEC's. The work undertaken was in addition to the work already carried out by the land managers.

- Brixton St Wetland, Kenwick. This project focussed on controlling *Watsonia*, *Hesperantha*, *Sparaxis* and *Tribolium*.
- Brickwood Reserve, Byford. Fencing constructed around perimeter of reserve to exclude 4wd access to the site, limiting damage by vehicles.

Kindly funded by Caring for our Country through Perth Region NRM and Lotterywest.



CVA Planting Under Story Species at Yule Brook



Blackberry Removal Near Nicholson Road Bridge



Brixton Street Wetlands



Canning River



## NRM PROGRAM ACTIVITIES

### CANNING RIVER REGIONAL PARK POST FIRE PROJECT

A large area of the Canning River Regional Park was burnt in February 2011. This presented an opportunity to undertake significant weed control work in affected areas, encouraging natural regeneration of remnant native vegetation. As well as undertaking the weed control work and some planting a monitoring regime has been established that will track the projects progress over the course of the coming years.

**Kindly funded by the Swan River Trust.**



Post Fire Transect Line, Canning River Regional Park

### HYDROCOTYLE RANUNCULOIDES PROJECT

The Hydrocotyle Project has made progress towards developing an effective method of controlling Hydrocotyle ranunculoides with a focus towards eradication. 2011/ 2012 will see further research on the ecology and control of Hydrocotyle undertaken in conjunction with project partners from the Hydrocotyle Working Group.

**Kindly funded by DEC Community Grants, SALP, Swan River Trust, Water Corporation and City of Canning.**



Hydrocotyle at Wilson Lagoon

### CHEVRON - CVA PARTNERSHIP

SERCUL formed a partnership with Chevron and Conservation Volunteers Australia (CVA) at the beginning of 2011, aimed at supporting Swan-Canning River restoration projects.

Funded by Chevron, SERCUL have access to a free labour force to undertake urban landcare activities for another two years. A CVA team of 6-10 people is available for two weeks of every month to assist with on-ground projects in and around the catchment.

In addition, corporate days are held throughout the year with up to 30 Chevron staff members coming to assist conservation groups to carry out their works.

The project is underway and we would like to extend this opportunity to conservation organisations within our catchment for 2012. If your organisation has a river restoration project in need of volunteer assistance and would benefit by participating in this program, please contact Amy Warner at SERCUL on 9458 5664.



Conservation Volunteers Australia



Chevron Team

**Total Volunteers = 815**  
**Total Volunteer Hours = 5705**  
**Equalling \$137,433 worth of labour**



## NRM PROGRAM ACTIVITIES

### CITY OF CANNING COMMUNITY LANDCARE

Coordinated by Melinda Snowball and Amy Warner

#### HAWKESBURY LAKES AND VELLGROVE AVENUE WATERWAY PROJECT

This project is in its 5th year of restoration with close to 120,000 seedlings installed since project inception. Continual maintenance and infill planting is scheduled for coming years.

##### Vellgrove Avenue Waterway

Installation of 10,000 plants. Direct seeding has been undertaken at this site with the germination of *Banksia menziesii* already evident.

A lot of volunteer labour went into this site from organisations including: Newman College (3 days), Transinex (4 sessions), Ruah, Water Corporation, Wood Group (engineering firm) and Allens Arthur Robinson (legal firm)

**Total Plants Planted = 10,000**

**Total Volunteer Hours = 885.5**

**Equalling \$21,332 worth of labour**

##### Hawkesbury Lakes

The site is in its final year of restoration with an infill planting of 3,000 seedlings this year. The site looks really good and is enjoyed by the local residents.

A local resident, Madeline, weeds the site at her leisure and has put in approximately 20 hours of work over the last 6 months. Thank you for your efforts Madeline.

**Total Plants Planted = 3,000**

**Total Volunteer Hours = 69.5**

**Equalling \$1,674 worth of labour**

#### BANNISTER CREEK LIVING STREAMS PROJECT

This project commenced in 2011 and involves the restoration of the Living Streams understorey vegetation. Over 3,000 plants have been installed, all lower to mid storey seedlings and direct seeding has also occurred.

**Kindly funded by the City of Canning and the Swan Alcoa Landcare Program. Funding for the employment of a Community Landcare Officer was provided by the City of Canning.**



Newman College Planting at Vellgrove



Seedling Germination at Vellgrove



CVA Weeding at Hawkesbury



Hawkesbury Lakes



## CATCHMENT GROUPS

### BANNISTER CREEK CATCHMENT GROUP

Weed control is a major focus for the group this year due to the good amount of rain we have had this winter. The removal of *Arundo donax* and *Cyperus gigantus* were a major focus for Bannister Creek this year.

**Total BCCG Volunteer hours = 139.75**  
**Equalling \$3,367 worth of labour**



**Bannister Creek Volunteers Planting**

#### **Bannister Creek Primary School Project**

The Bannister Creek Primary School's 'Restoration of remnant woodland understory' project began in 2007. Since then, nearly 10,000 plants have been installed. This project is in its final year of funding with 2,500 plants installed this year.

**Total Plants Planted = 2,500**  
**Total Volunteer Hours = 300**  
**Equalling \$7,227 worth of labour**



**Bannister Creek PS Planting**

#### **Lynwood Senior High School: Harmony Gardens Project**

The Bannister Creek Catchment Group has been working with Lynwood SHS on a new and exciting project called the 'Harmony Gardens'. Over 600 plants donated by the Bannister Creek Catchment Group have been installed.

**Total Volunteer Hours = 160**  
**Equalling \$3,854 worth of labour**

**Kindly funded by the City of Canning, Department of Environment and Conservation, Caring for Our Country Community Actions Grant and Lotterywest.**



**Lynwood SHS Planting**

### TWO RIVERS CATCHMENT GROUP

The Two Rivers Catchment Group has been involved with a number of projects including the Kent St Foreshore Rehabilitation in the Canning River Regional Park, the Hydrocotyle Project and the Kent St Weir Ecological Study.

The group again took part in National Tree Day, this year at the Kent St Foreshore where 70 volunteers spent the morning planting 6000 seedlings.

**Total Plants Planted = 6000**  
**Total Volunteer Hours = 210**  
**Equalling \$5,059 worth of labour**



**Two Rivers National Tree Day**

**Kindly funded by the Swan River Trust and Riverbank (DEC).**



## ARMADALE GOSNELLS LANDCARE GROUP



The Armadale Gosnells Landcare Group have again been very busy in 2010/11 focusing on bushland and foreshore regeneration within the Cities of Armadale and Gosnells. We have taken on more restoration sites and started up two new 'friends groups' in 2011. AGLG is also currently the state winner in the Urban Landcare Award Category of the WA Landcare Awards and will be representing AGLG at the nationals in Sydney next year! Other success stories for the year include:

**On Ground Funding:** \$240,000 from the City of Armadale, City of Gosnells, Swan River Trust, Perth Region NRM, Alcoa, Western Australian Planning Commission, Australian Government Caring for our Country Program, Be Natural and Landcare Australia.

**Facilitated** over 100 community events, workshops and activity days.

**Supported** over 14 Friends Groups including two NEW ones.

**Worked** with over 25 different school and community Groups

**Restoration sites** - worked on 21 sites within the Cities of Armadale and Gosnells

**Published** the AGLG Business Plan 2011/12 - 2013/2014

**Total Plants Planted = 105,000**

**Total Volunteers = 1404**

**Total Volunteer Hours = 5383**

**Equalling \$129,676 worth of labour**

**Community Landcare Coordinator:** Crystal Gillam  
**Community River Restoration Officer:** Dan Walker

Kindly funded by the City of Armadale, City of Gosnells, Swan River Trust, Perth Region NRM, Alcoa, Western Australian Planning Commission, Australian Government Caring for our Country Program, Be Natural, Landcare Australia, Water Corporation, Main Roads WA, SERCUL and Lotterywest.



Armadale Gosnells WA Landcare Awards 2011



Centella Growth at John Okey Davis Park, Gosnells



C of Armadale Staff planting with Friends of Scott Rd



Friends of Southern River Clean Up Day



## SUSTAINABLE PRODUCTION ACTIVITIES

### WINNING WITH THE LAGGARDS

#### A small factory environmental management support research project

Coordinated by Paul Lock - PhD Candidate

‘Winning with the Laggards’ is a PhD research project focused on improving light industrial Small and Medium Enterprise (SME) environmental management. This work builds on the ‘Drain is just for Rain’ study conducted by SERCUL 2005-2008. The current research focuses on micro enterprises (1 to 5 employees) and seeks to understand how to work cooperatively with the poorest environmental management performers, to achieve beyond legal compliance outcomes. The research draws particularly on social science in the fields of education, sociology, psychology, behaviour change, and innovation theory to examine the social, as well as technical, influences in the adoption of environmental management behaviours and equipment.

#### Achievements include:

- Approximately 80 visits have been made to businesses with obviously poor environmental management in light industrial areas in southern metropolitan Perth.
- Many businesses provide valuable conversational information, but a culture of fear of regulation makes most reluctant to be recorded on tape for use in the research.
- State and Local Government SME stakeholders, SME NRM educators, industry group representatives, and high performing and poor performing SMEs have been interviewed to develop a ‘whole of system’ understanding of the challenges.
- 25 interviews have been conducted and a survey of Local Government Environmental Health Managers undertaken. The data is currently being analysed and a technical report is expected to be available in November 2011.
- Preliminary analysis suggests there is a surprisingly common intent and desire to cooperate between all groups, but currently poor coordination, and a confusion of means between them. The need to focus on economic development alongside environmental management is highlighted. A comprehensive approach to landscape scale change is required to ensure that the multitude of factors influencing environmental management are aligned in unison, rather than antagonistically as often occurs now.
- The research has been reported at local and international conferences and is being prepared for journal publication.

**Kindly funded by the Waste Management Authority's Strategic Waste Initiatives Scheme, the Department of Water and the City of Canning.**



Storage Area at an SME



Volunteers Cleaning up an Industrial Area



Rubbish Dumped in an Industrial Area



Rubbish Along a Drain in an Industrial Area



## URBAN WATERWAYS RENEWAL

### URBAN WATERWAYS RENEWAL PROJECT

Coordinated by Ana Terrazas, Glen Byleveld and Brett Kuhlmann

The Urban Waterways Renewal (UWR) project is funded by the Australian Government through Water for the Future-National Water Security Plan for Cities and Towns program with matching funding from State and Local Government. There are a total of 11 projects running across the Cities of Canning, Gosnells and Armadale.

#### UWR Achievements:

- Living Stream workshop organised by SERCUL and Department of Water held in Sept 2010. 50 attendees from Local Government Authorities, government agencies, community groups and consultancies.
- SERCUL received the initial funding and launch the official commencement of the program on October 2010.
- More than 30 tours around the UWR sites.
- Concept designs had been prepared for all the sites.

**Total Plants Planted = 74,640**

**Total Volunteers = 354**

**Total Volunteer Hours = 1,413**

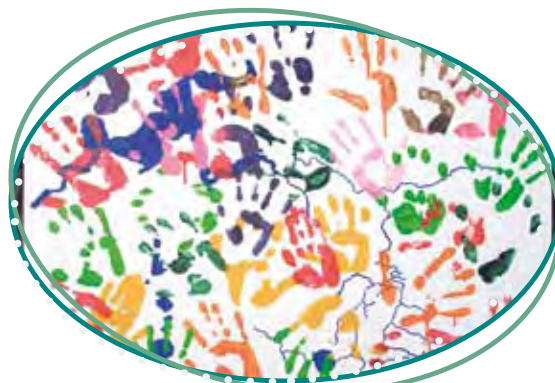
**Equalling \$34,039 worth of labour**

### BANNISTER CREEK LIVING STREAM - CITY OF CANNING

Upland and dampland planting has been completed between Metcalfe Road and the weir with instream sedge planting being undertaken once the flow velocity reduces for this season. Weed control is ongoing below Metcalfe Road to treat large infestations of Blackberry, Arundo and Morning Glory. The riffle designs have been finalised with a landscape plan currently being developed for public consultation.

### BICKLEY BROOK - CONFLUENCE

The engineering designs have been finalised pending final approvals. Planting of the foreshore and the floodplain has been undertaken in areas outside of the proposed earthworks. Earthworks are proposed for the middle of summer. Weeds within the project area have been well managed with ongoing maintenance required to enable the establishment of vegetation. Instream sedge planting will be undertaken once the water velocity reduces for the season.



UWR Launch Poster



Living Stream Workshop



Arundo Removal in Bannister Creek



Bickley Brook Confluence in Flood



## URBAN WATERWAYS RENEWAL

### BICKLEY BROOK - MANDARIN ROAD

The engineering design has been finalised pending final approvals with the earthworks proposed for this summer. Three riffles are proposed with the banks of the channel to be pulled back to establish some larger basins within the system. Revegetation has commenced outside of the proposed earthworks areas. A very successful National Tree Day event was held at the site engaging local businesses and community within this area.

### BICKLEY BROOK - KELVIN ROAD RAIN GARDENS

The engineering design has been finalised for this project with the species and media selection for the trials to be finalised. The works for this project are proposed for the end of summer allowing a short transition period to planting at the start of winter 2012.

### BICKLEY BROOK - EVA TO TONKIN

Upland planting at this site for this season has been completed with instream sedge planting to be undertaken once the water velocity reduces. Three rock riffles are proposed for this site, to be installed during the summer period. The removal of rubbish from the brook, the weed management and the planting program have received very positive comments from residents who walk their dogs through the reserve.

### SOUTHERN RIVER - CITY OF ARMADALE

There are six project sites receiving Australian Government funding in the Southern River catchment. The sites include: Grovelands, Third, Seville, Strawberry Drive Basins, Riverside Lane and Wungong River. Riverside Lane and Wungong River sites receive additional funding support from the State NRM funding program.

Site preparation has commenced at all sites with the installation of erosion control measures and planting of local native seedlings. Construction is scheduled to commence in 2012 with revegetation to follow.

Special thanks to Karl Karu of Urban Ecosystems whose knowledge and advice has proven invaluable.

**Kindly funded by Federal and State Government, the Swan River Trust, Water Corporation and the Local Governments of Canning, Gosnells and Armadale.**



National Tree Day at Mandarin Road



Corporate Day at Third Avenue



Planting Day at Williams Road



Planting on the Wungong River



## URBAN WATERWAYS RENEWAL

### WILLIAMS ROAD MAIN DRAIN RENEWAL

This site exhibits high flow rates and steep banks which has caused erosion, sedimentation, gross pollutant and nutrient export into the Wungong River. The project will use the principles of water sensitive urban design to reduce the volume of sediment and gross pollutants exported from the waterway.

Site works have commenced with the installation of two riffles to provide erosion control and removal of over 100 cubic metres of sediment and gross pollutants. Weed control has significantly reduced the fuel load and risk of fire.

Special thanks to Cecil Andrews High School whose staff and students assisted in planting over 15 000 seedlings.



Williams Road Riffle

**Kindly funded by the State NRM and the Swan River Trust and City of Armadale for the Implementation of the Swan Canning Water Quality Improvement Plan.**

## UWR - MONITORING & RESEARCH

### HOW HABITAT FEATURES EFFECT TAXONOMIC DIVERSITY IN STREAM MACROINVERTEBRATE COMMUNITIES – IMPLICATIONS FOR STREAM RESTORATION IN BANNISTER CREEK AND BICKLEY BROOK

Coordinated by Bonita Clark - Honours Student

UWA Honours student Bonita Clark has been investigating how habitat features influence diversity in the macroinvertebrate communities of Bannister Creek, Bickley Brook and Ellis Brook. This study will collect pre-restoration baseline data, provide knowledge on the structure and health of macroinvertebrate communities and how habitat variables influence this. Post-restoration comparisons will be conducted to determine the success of these restoration projects.

Seven reaches have been selected to be sampled in this study in spring 2010, winter and spring 2011. The first sampling round was conducted in September-October 2010 which found a total of 8952 macroinvertebrates representing 39 taxonomic groups. The presence of canopy cover, aquatic plants (macrophytes) and trailing vegetation are having positive effects on macroinvertebrate diversity. Further results will be available after the completion of this study in October 2011.



Bickley Brook Mandarin UWR Sampling Site 6



Hemicordulia tau (Dragonfly Nymph)



## UWR - MONITORING & RESEARCH

### MEASURING THE EFFECTIVENESS OF SERCUL'S URBAN WATERWAYS RENEWAL (UWR) PROJECTS

Coordinated by Judy Fisher

Ecologist PhD Judy Fisher has developed a monitoring and evaluation program to better appreciate the outcomes of the UWR projects interventions. This program will measure the manner in which the plant and animal communities are responding to the changes occurring at UWR project sites.

In 2010/2011 pre-restoration baseline data was gathered along vegetation and canopy transects at Bannister Creek (8 transects), Bickley Brook (7 transects), Mandarin Road (6 transects), Tonkin and Eva (1 transect) and Williams Road (4 transects). This will allow post-restoration comparisons of the flora which will assist in determining the success of the restoration projects while providing advice for future projects.

Additional to the water macroinvertebrates study mentioned on the previous page, five sites were selected to be sampled for terrestrial macroinvertebrates in spring 2011; Bannister Creek, the Confluence and Eva St sites at Bickley Brook and two sites on Southern River, Riverside Lane and Wungong River.

Volunteers from Birds Australia are helping SERCUL to implement the bird monitoring program at some UWR sites by walking the sites and recording the bird species present on a monthly basis.

Extra photo monitoring was used to record pollution and major rain events such as the ones in March, May and July this year.

**Total Volunteers = 16**  
**Total Volunteer Hours = 715**  
**Equalling \$17,224 worth of labour**



Cockatoo Spotted During the Bird Survey



Vegetation Canopy Assessment



Vegetation Assessment



Motorbike Frog Spotted During Assessment



Sedimentation and Turbidity at Mandarin Rd



## BECKENHAM OPEN SPACE AND HOMESTEAD

### BECKENHAM OPEN SPACE and MEN OF THE TREES MEMORIAL GROVE PROJECT

Coordinated by John Maliunas and Tracy Evans

Weed management for the Beckenham Open Space has been excellent this year with all sites well prepared for the planting season. This year a total of 5,635 plants were put in by school and community groups and individual volunteers. We would like to thank all our volunteers for their commitment and hard work. A total of 478.5 hours was given by our volunteers this year, an outstanding effort.

We would also like to thank Men of the Trees Nursery for their contribution of 4,000 plants this year. Also a Community Action Grant has allowed us to purchase extra plants, herbicide and an auger which has been a welcome addition to the team in light of our clay soils.

**Total Plants Planted = 5,635**  
**Total Volunteer Hours = 478.5**  
**Equalling \$11,527 worth of labour**

### YULEBROOK HOMESTEAD AND SHED CONSTRUCTION

The shed is complete with security and has proved an excellent facility enabling storage, work benches with a conference room come kitchen/laundry. There is also an additional waterless toilet. The undercroft is being developed into a 'wet' area suitable for potting and mixing chemicals.

The permaculture garden wall is completed and complements the recent installation of a native grass lawn next to the garden. The native grass *Microlaena stipoides* was initially grown in our nursery from sample stock.

### PERMACULTURE GARDEN

The retaining wall surrounding the permaculture garden has been finished. This will enhance the plans ahead for expanding the garden which will include creating a sensory garden, more garden beds and improving accessibility for the disabled such as wheelchair access. These planned improvements will be made possible through the kind generosity of a donation from Junk Busters for \$6,000, for which SERCUL is grateful.

Our thanks also to Inclusion WA and Ruah Inreach for their participation and efforts in keeping the garden looking so good and providing a steady stream of volunteers.

**Kindly funded by the WA Planning Commission (WAPC),  
Men of the Trees, Bowra and O'Dea, Caring for Our  
Country Community Action Grant and SERCUL.**



Planting Day in Memorial Grove 2012 Site



Motorbike Frogs in Yule Brook



SERCUL's New Rainwater Tank



SERCUL's Permaculture Garden



## ENVIRONMENTAL SERVICES

Natural resource management services delivered by the SERCUL team (Kristy Ferguson, Cory Fletcher, Ottoniel Garriga, Andrew Haning, Lee Ireland, Anna Ralfe, Brittany Snowball, Jason Stubbs and Shaun Wimbridge) have expanded this year to include the following projects:

### **TARUN COURT and MANLEY COMPENSATION BASIN**

Located in the City of Canning

Under contract from the City of Canning, Sercul staff continued the maintenance of both sites through weed management. The weeds consisted mainly of grasses, such as couch, nutgrass, polypogon and typha, and others such as watercress. The works mainly involved hand weeding at both sites. Works ceased at the end of May 2012.

### **WIRELESS HILL**

Located in the City of Melville

The team continues to work off-site at Wireless Hill Park. Management of perennial Veld Grass within the area has been thorough, and will continue for another year within designated sections.

### **HARTFIELD PARK WEED MANAGEMENT**

Located in the Shire of Kalamunda

In spring 2010 SERCUL conducted a weed survey of Hartfield Park for the Shire of Kalamunda. SERCUL produced a weed survey, management plan and management action templates for the Shire to guide the ongoing management of this valuable natural asset. The Hartfield Park Weed Management Plan is presented as a positive resource that promotes the protection of remnant vegetation within the Hartfield Park Reserve through a program of strategic weed management measures. SERCUL would like to thank the Shire of Kalamunda for the opportunity to provide this service and the following staff for their assistance in completing the project; Tom Atkinson, Glen Byleveld, Matthew Grimbly, Tracy Evans, Annick Delange and Melinda Snowball.

### **SLAB GULLY**

Located in the City of Armadale

This project is aimed at reducing sediment into the upper Canning River. It is undertaken in partnership with the City of Armadale and is in its third stage of implementation.

**Total Plants Planted = 6,000**  
**Total Volunteer Hours = 45**  
**Equalling \$1,084 worth of labour**



Manley Compensation Basin



Donkey Orchids Growing at Wireless Hill



Weed Surveying at Hartfield Park



Slab Gully



## VOLUNTEER COORDINATION

### VOLUNTEER COORDINATION PROGRAM

Coordinated by Monica Estrada

#### Program Aim:

Through a 2010 DEC Grant, SERCUL employed a part time administration officer to assist with community volunteer coordination and to continue developing a volunteer management system for SERCUL that could also be a frame for community groups.

#### Key achievements 2010-2011:

- Preparation of a SERCUL Baseline Assessment report about compliance with the National Standards for not for profit organisations involving volunteers with the information gathered in the workshop held on June 2010 with SERCUL staff. SERCUL assessed how the organisation is complying with those National Standards and where it should be. The assessment allowed identifying areas where improvements need to be made and prioritise those areas according to time and resources availability.
- Preparation of a Five-Year Action Plan to improve SERCUL's Volunteer Management System according to the National Standards. This Plan targets the 97 identified criteria needed to be improved and prioritised them in three levels (high, medium and low). For each criterion actions are recommended and responsibilities and time frame required to be accomplished are also included.
- Coordination of volunteers into SERCUL and other community groups' activities using the principles and procedures developed during this project.
- We received a group of 24 Japanese students, two Japanese teachers and two Australian coordinators who came through the Australian Institute of International Understanding (AIU) - Discover New Worlds. They volunteered for the AGLG doing hand-weeding at the Palomino Reserve.

**New Volunteers = 62, including 28 students**

**Three new Groups registered= Friends of Paganoni Swamp, Bicton Environmental Action Group and Friends of Wellard Bushland**

**Volunteer Hours = 1,980**

**Equalling \$47,698 worth of labour**

**Kindly funded through DEC Community Grants and the Grants to Voluntary Environment and Heritage Organisations (GVEHO).**



Japanese Student Volunteers March 2011



Presenting Volunteer T-shirts



School Students Planting at SERCUL



High School Students Drain Stencilling



## ADMINISTRATION AND COMMUNITY CAPACITY

### FINANCIAL ADMINISTRATION SUPPORT TO COMMUNITY NRM GROUPS

The SERCUL Financial Administration Manager, Sandy Wainwright, and Assistant Financial Officer, Jose Alcala, continue to provide financial management assistance to the following community groups in the SERCUL area:

- Bannister Creek Catchment Group
- Two Rivers Catchment Group
- Wilson Wetlands Action Group
- Armadale Gosnells Landcare Group
- Friends of McDougall Park
- Friends of G.O. Edwards Park
- Canning River Regional Park Volunteers
- Friends of Wireless Hill
- Kaarkin - Black Cockatoo Recovery Centre

### VOLUNTEER ADMINISTRATION SUPPORT

The SERCUL asset stocktake has been completed with assistance from Mr Tony Parelli who came to SERCUL as a volunteer. He has commenced scanning all hard copy photos from past projects so that all hard copy photos are now available in digital form. This has increased the security of SERCUL historical records.

Tony has also developed an asset register which includes all property owned by SERCUL and includes other community group assets that are stored on site in the Landcare Facility. All stock has been barcoded and engraved for security purposes and Tony has completed the development of a data base so that all new assets are scanned, registered and engraved at the time of purchase.

We would like to thank all the other volunteers that have contributed their time to the SERCUL office. Volunteers have helped to put stickers on 25,000 brochures, undertaken a stocktake of the SERCUL library, put together information packs and assisted with many other administration tasks.

### NEW GROUP FORMATION & DEVELOPMENT

The development of the Friends of Bull Creek Catchment has included monthly work days on ground and a community group planning session that highlighted what the group wished to participate in throughout the year and what their priorities were for the next 12 months. On ground planting, weeding and plant identification sessions have been successful.



Sandy Assisting AGLG with their Books



Tony Parelli Undertaking SERCUL Stocktake



Volunteer Assisting Tracy with the Veggie Garden



Friends of Bull Creek Weed Identification Day



## AUDITORS REPORT AND FINANCIAL REPORTS

### W F DAWSON & ASSOCIATES Chartered Accountants



Chartered  
Accountants

#### INDEPENDENT AUDITOR'S REPORT TO THE MEMBERS OF SOUTH EAST REGIONAL CENTRE FOR URBAN LAND CARE INC (SERCUL)

##### Scope

I have audited the financial statements of SERCUL, which has been classified as a non general purpose account, for the year ended 30th June 2011.

SERCUL's Management Committee are responsible for the preparation and presentation of these financial statements and the information they contain. The Committee determines the accounting policies used so as to meet the needs of the members. I have conducted an independent audit in order to express an opinion of them to the members.

I disclaim any assumption of responsibility, for any reliance on this report or these accounts, to any persons other than members, or for any other purpose other than for which they were prepared.

My audit has been conducted in accordance with Australian Auditing Standards to provide reasonable assurance as to whether these accounts are free of material misstatements. My audit procedures include an examination, on a test basis, of evidence supporting the amounts shown in these accounts. These tests have been undertaken to form an opinion as to whether, in all material respects, these accounts are fairly presented.

My audit opinion expressed in this report has been formed on this basis.

##### Audit Opinion

In my opinion the financial statements present fairly the operating result of SERCUL for the 2010/2011 year and its financial position at 30<sup>th</sup> June 2011.

Signature of Auditor:

Name of Auditor:

WARREN F DAWSON

29 July 2011

Practising Member of Chartered Accountants  
Level 2, 42 Central Street, Stirling WA 6011  
Correspondence - PO Box 2055, Churchlands WA 6015  
Telephone: (08) 9201 1837 Facsimile: (08) 9207 5410 Mobile: 0411 825 242  
A.U.S. 50 002 594 173  
Email: warren@wdawson.com.au  
Liability limited by a Scheme approved under Professional Standards Legislation



12:38 PM

28/07/11

Accrual Basis

## South East Regional Centre for Urban Landcare Balance Sheet As of June 30, 2011

	Jun 30, 11
<b>ASSETS</b>	
Current Assets	
Chequing/Savings	
Bendigo Term Investment 1366413	726,138
Bendigo working a/c 136248010	150,910
BendigoTerm Inv. 141340877	1,559,149
Capacity Builder Accou143399459	400,000
Petty Cash	93
Petty cash - PAG	100
Total Chequing/Savings	2,836,390
Accounts Receivable	
Accounts Receivable	96,850
Total Accounts Receivable	96,850
Total Current Assets	2,933,240
Fixed Assets	
Computer Equipment	
Prov. for depn Computer equip.	-52,356
Computer Equipment - Other	59,165
Total Computer Equipment	6,809
Motor Vehicle at cost	
Prov. for depn Motor Vehicle	-60,871
Motor Vehicle at cost - Other	141,103
Total Motor Vehicle at cost	80,233
Office Equipment	
Prov for depn Office Equipment	-35,078
Office Equipment - Other	42,363
Total Office Equipment	7,286
Plant & Equipment	
Prov for depn Plant & Equipment	-7,769
Plant & Equipment - Other	23,205
Total Plant & Equipment	15,436
Total Fixed Assets	109,763
<b>TOTAL ASSETS</b>	<b>3,043,003</b>
<b>LIABILITIES</b>	
Current Liabilities	
Other Current Liabilities	
Grants in advance	1,617,000
Payroll Liabilities	35,160
Salary Sacrifice Brett	-5,581
Salary Sacrifice Julie	-105
Tax Payable	49,625
Total Other Current Liabilities	1,696,099
Total Current Liabilities	1,696,099
<b>TOTAL LIABILITIES</b>	<b>1,696,099</b>
<b>NET ASSETS</b>	<b>1,346,904</b>
<b>EQUITY</b>	
Retained Earnings	662,686
Net Income	684,218
<b>TOTAL EQUITY</b>	<b>1,346,904</b>



12:39 PM

28/07/11

Accrual Basis

## South East Regional Centre for Urban Landcare Profit & Loss July 2010 through June 2011

	Jul '10 - Jun 11
Ordinary Income/Expense	
Income	
Admin-Service Fees	218,736
Admin In	16,257
Anvil Way 11-12	
Erosion control	3,200
Weed control	12,000
Total Anvil Way 11-12	15,200
Anvil Way 2005 expenditure	3,919
Anvil Way Construction	
Admin	5,500
Contingency	2,000
Contract labour	10,500
Equipment	250
Jute matting	4,231
Plants	23,435
Volunteer support	0
Weed control	4,000
Total Anvil Way Construction	49,916
Anvil Way reimbursements	
Jute matting	0
Plants	5,338
Total Anvil Way reimbursements	5,338
BCLS Typha Program.	584
Beckenham Memorial Park.	14,309
Bickley Brook	38
BOS-Comm Action Grant CFOC 2010	
Admin	1,500
Audit	450
Revegetation	6,000
Weed control	12,000
Total BOS-Comm Action Grant CFOC 2010	19,950
Brixton St TEC	289
C of SP WQ Data Analysis	40,640
Canning River Fish Passage	
Communications	1,497
Total Canning River Fish Passage	1,497
Centenary Pk Comp Basin Belmont	
Labour	1,091
Plants	455
Total Centenary Pk Comp Basin Belmont	1,545
CFOC Employment	235,000
City of Canning CLC	62,169
City of Fremantle Booyeembara P	3,239
Clean Drains River Gains	716
Contract labour in	0
CRRP Post Fire Recovery	
Labour	83,056
Materials	15,600
Total CRRP Post Fire Recovery	98,656
DEC 10-11 Volunteer Management	27,000
DEC COMM Grant 09-Research	5,284
Donations and income	329
DPI-salary in	60,000
Employment Insurance	8,676
Employment.	0
Eugene's Water Quality Project.	2,000
Fertilise Wise Education	
Admin	10,000
Total Fertilise Wise Education	10,000



12:39 PM

28/07/11

Accrual Basis

## South East Regional Centre for Urban Landcare Profit & Loss July 2010 through June 2011

	Jul '10 - Jun 11
Fertiliser Training	4,818
FO Wireless Hill DEC	5,511
FO Wireless Hill SALP	10,608
Grants	5,900
Hartfiel Park/ Wattle Grove	22,600
Hester Park	
Admin	500
Plants	4,800
Weed management	7,030
Total Hester Park	12,330
HR & Training.	28,311
Hydrocotyle Weed Control Trial	14,430
Interest received	110,775
Jack Johnson	646
Junkbusters Inc.	6,064
Kaarrakin Centre	
Administration	2,818
Coordinator	49,156
Superannuation	4,444
Workers Comp. and Insurance	6,996
Total Kaarrakin Centre	63,414
Laggards-Wages Insurance Admin	35,000
Living Streams W/Shop	942
Lotterywest	13,407
Lotterywest-Mussel Project	32,963
Lotterywest-Staff & Vol. Dev	12,341
LSL Liability.	17,413
Manley St Comp Basin	3,800
Nth Forrestdale-Education	10,000
On Ground.	
Design	0
Equipment	0
Jute matting	0
Mulch	0
Plants	0
Volunteer support	0
Weed control	0
Total On Ground.	0
Operating costs in	10,000
PAG operating costs	12,162
PAP Extension Turf ManagerTrain	50,000
Project labour	257,717
Project supervision	131
Promotions in	575
PUES	
Registration	9,822
Total PUES	9,822
Qantas-Yule Brook	
Admin	5,000
Education	7,330
Plants	4,950
Weed control	7,720
Total Qantas-Yule Brook	25,000
Registration	0
Reimbursements	15,494
Reimbursements- DPI	24,000
SALP 2009-10 Canning River Trib	12,584
SALP 2009-10 WONS	61,902
Slab Gully	2,652
SRT Grants	250,000
Tarun Ct Basin	2,250



12:39 PM

28/07/11

Accrual Basis

## South East Regional Centre for Urban Landcare Profit & Loss July 2010 through June 2011

	Jul '10 - Jun 11
Urban Renewal Projects	
Administration	88,950
Construction	4,000
Monitoring	13,000
Planning & Design	81,000
Plant installation	28,000
Plants	36,082
Project Management	
Armadale	119,750
Canning	108,000
Gosnells	85,200
Total Project Management	312,950
Weed Control & maintenance	103,500
Total Urban Renewal Projects	667,482
Vehicle operations	27,344
Vellgrove Screening.	27,702
Water Corp. UWR	30,000
Wharf Street	1,350
Yule Brook Project.	25,000
Total Income	2,825,726
Gross Profit	2,825,726
Expense	
Admin	
Admin Service Fees	80,611
Books/Publications	1,594
Communication/computer	7,863
Insurance	898
Landcare Shed	1,847
Office equipment	3,805
Office Grounds	3,362
Office Maintenance	5,724
Postage	486
Project Transfer	780
Promotion	15,880
Stationery	1,666
Subscriptions	296
Utilities	2,689
Volunteer support	2,190
Total Admin	129,691
Anvil Way Construction.	
Admin	5,616
Contingency	1,310
Contract labour	17,971
Design	0
Equipment	409
Jute matting	7,452
Plants	48,178
Volunteer support	206
Weed control	550
Total Anvil Way Construction.	81,691
Audit	900
Bank Service Charges	104
BCLS Typha Program	281
Beckenham MP On Ground.	255
BOS Comm Action Grant CFOC 2010	
Admin	1,500
Audit	450
Revegetation	5,124
Weed control.	1,088
Total BOS Comm Action Grant CFOC 2010	8,162
Brixton St TEC.	289
C of Fremantle Booyeembara Park	40,262



12:39 PM  
28/07/11  
Accrual Basis

## South East Regional Centre for Urban Landcare Profit & Loss July 2010 through June 2011

	Jul '10 - Jun 11
Centenary Pk Comp Basn Belmont Labour	150
Total Centenary Pk Comp Basn Belmont	150
Clean Drains River Gains.	32
Contract Labour	0
CPMP.	990
CRRP Post Fire Recovery.	
Labour	275
Materials	13
Weed control	8,270
Total CRRP Post Fire Recovery.	8,558
CRRP Post Fire Research Monitoring & research	357
Total CRRP Post Fire Research	357
DEC 10-11 Volunteer Management.	27,000
DEC Grants 09-10	
DEC Grants Volunteer Mgm	4,932
Tree Hollows	
Expert labour.	1
Materials	74
Total Tree Hollows	74
Total DEC Grants 09-10	5,006
Depreciation Expense	43,135
Employment Insurance.	6,735
Fertilise Wise Education.	
Admin	1,130
Total Fertilise Wise Education.	1,130
FO Wireless Hill DEC.	1,767
GVEHO 08-09	-1,623
Hartfield Park	18
Hester Park.	
Admin	500
Plants	3,179
Weed management	4,070
Hester Park. - Other	530
Total Hester Park.	8,279
HR & Training	47,896
Jack Johnson.	182
Kaarakin Centre	
Administration	1,870
Workers Comp & Insurance	4,642
Total Kaarakin Centre	6,511
Laggards-Vehicle Operation Exp.	1,807
Laggards-Wages Ins Admin	709
LaggardsComputer equip software	1,270
Lambertia Floodplain Watsonia.	4,541
Liege Street.	1,228
Living Streams W/shop.	942
Lotterywest-Staff & Vol. Dev.	15,168
Lotterywest - Mussel Project	30,163
Lotterywest.	12,180
LSL Liability	12,606
Mobile phone	2,867
Nth Forrestdale Consultancy	5,535
On Ground	
Design	0
Equipment	0
Jute matting	0
Plants	0
Volunteer support	0
Weed control	441
Total On Ground	441



12:39 PM  
28/07/11  
Accrual Basis

## South East Regional Centre for Urban Landcare Profit & Loss July 2010 through June 2011

	Jul '10 - Jun 11
PAG-oper costs	
Operating costs	50,219
Total PAG-oper costs	50,219
PAG Landcare Award 2009.	1,000
PAG..	
Yellowfish	516
Total PAG..	516
Payroll Expenses	861,818
Promotions	143
PUES.	
Admin service fees	1,155
Promotion	13,492
Total PUES.	14,647
Qantas Yule Brook	
Admin	5,000
Education	2,757
Plants	5,287
Weed control	830
Total Qantas Yule Brook	13,874
Queens Park Weed Mapping	6,873
Reimbursement	15,495
Reimbursement-DPI	22,096
Research Analysis Fees.	7
SALP 09-10 Canning River Tribs	12,584
SALP 09/10 WONS	58,279
SGIO Grant 09.	
Brochures	2,343
Plants	280
Reticulation	772
Total SGIO Grant 09.	3,395
Slab Gully.	13,416
State NRM 2011 Canning River	
Plants	9,537
Weed control	1,787
Total State NRM 2011 Canning River	11,325
Sustainable Production Op costs	1,220
Travel	15,236
Urban Renewal Projects.	
Administration	15,350
Construction	2,032
Planning & Design	39,283
Plant installation	1,840
Plants	30,305
Project Management	
Armadaile	179,286
Canning	42,034
Gosnells	64,716
Total Project Management	286,036
Weed Control & maintenance	85,150
Total Urban Renewal Projects.	459,995
Vehicle operation expenses	26,635
Vellgrove Screening	10,111
Water Quality Monitoring.	0
Wharf St 09-10.	1,350
Woodlupine.	
Admin	2,008
Labour	6,982
Total Woodlupine.	8,989




12:39 PM  
28/07/11  
Accrual Basis

## South East Regional Centre for Urban Landcare Profit & Loss July 2010 through June 2011

	Jul '10 - Jun 11
Worldwide Printing-Masons L	69
Yule Brook Project	25,000
<b>Total Expense</b>	<b>2,141,507</b>
<b>Net Ordinary Income</b>	<b>684,218</b>
<b>Other Income/Expense</b>	
Other Expense	
Asset purchases-Computers	0
Asset purchases-Motor Vehicles	0
Asset Purchases-Office equip	0
Asset Purchases - Plant & Equip	0
<b>Total Other Expense</b>	<b>0</b>
<b>Net Other Income</b>	<b>0</b>
<b>Net Income</b>	<b>684,218</b>



## STATEMENT BY THE MANAGEMENT COMMITTEE

  
South East Regional Centre for Urban Landcare

69 Horley Road,  
Beckenham, Western Australia 6107  
Telephone: 08 9458 5664  
Facsimile: 08 9458 5661  
Website: [www.sercul.org.au](http://www.sercul.org.au)

STATEMENT BY THE MANAGEMENT COMMITTEE  
SOUTH EAST REGIONAL CENTRE for URBAN LANDCARE (INC.)

In the opinion of the Members of the Executive of the SERCUL Committee;

(a) The accompanying Profit and Loss Statements is drawn up so as to give a true and fair view of the results of the Group for the year ended 30<sup>th</sup> June 2011.


(b) The accompanying Balance Sheet is drawn up so as to give a true and fair view of the state of affairs of the Group as at the end of that period.

(c) At the date of this statement there are reasonable grounds to believe that the Group will be able to pay its debts as and when they fall due.

The Accounts of the Group have been prepared in accordance with applicable Australian Accounting Standards.

Signed in accordance with a resolution of the Executive Committee.

Treasurer  Date 26 Sept 2011

Chairperson  Date 26 September 2011



## NEW 2011-2012 PROJECTS

### NICHOLSON ROAD BUSHLAND

Nicholson Road Bushland is an area of 13.5 ha containing a rich floral diversity through Banksia woodlands, Melaleuca damplands and herb rich seasonally inundated clay pans. The site is Bush Forever site 456. The project involves a terrestrial invertebrate survey, vegetation mapping, weed control, seed collection, restoration and the establishment of an ongoing management plan for the site. SERCUL will endeavor to develop a local community friends of group during this project to provide a longer term local involvement care and maintenance program for the bushland. This project is funded by DEC \$25,973 and the State NRM \$43,585 and will be implemented with assistance from Murdoch University Biology students.



**Nicholson Road Bushland**

### TERRESTRIAL INVERTEBRATE BASELINE ASSESSMENTS

Terrestrial macroinvertebrates and reptiles have been identified as an important measure for SERCUL UWR projects. David Knowles will implement the baseline assessment of terrestrial invertebrates and reptiles during the late spring and early summer of 2011-12. David will be assisted by SERCUL staff and volunteers which will provide an excellent training opportunity for people to learn about the ecological inter-relationships within the reserves and waterways that we are restoring. The data collected will be presented in a formal report and SERCUL will then assess when repeat monitoring should occur during and/or after restoration. SERCUL hope that the information will provide us with a bigger picture of the ecosystem that we are working with, seeking to make significant improvements in the long term management of these systems.



**Damsel Flies**

### FUTURE DIRECTION OF SERCUL FOR 2011-2012

SERCUL commenced a planning process with the staff, SERCUL committee and stakeholders to review the strategic development of SERCUL and provide SERCUL with a 10 year futures direction plan. Four workshops have been held and individuals involved directly and indirectly, have been interviewed. The plan includes future visionary ideas and strategic goals for SERCUL improved delivery of a holistic partnership approach to meeting our objectives. Dr Judy Fisher will continue to develop this plan with the SERCUL committee and staff. The plan will be made available for review by SERCUL mid-November 2011.



**SERCUL Homestead from Wetland**



**SERCUL Homestead and Native Garden**



## NEW STAFF AT SERCUL

### **AMY WARNER**

#### **City of Canning Landcare Officer**

Amy's role is to develop and manage community based restoration projects in the City of Canning. Current projects are the restoration of Hawkesbury Lakes & Vellgrove Avenue waterway, Bannister Creek Living Stream and Lynwood SHS Harmony Gardens. Amy works closely with the Bannister Creek Catchment Group assisting with restoration and volunteer support. Amy also manages the Chevron-CVA project.



Amy Warner

### **BRETT KUHLMANN**

#### **SERCUL Landcare Services Manager**

Brett commenced at SERCUL in April 2011 taking the role of project officer for the UWR projects along Bickley Brook. In July 2011, with Tom moving on from SERCUL, Brett has taken on the role as manager of the Landcare program, the DNIP project officer and the management of the Bannister Creek UWR project. The role of Landcare Services Manager involves the development of SERCUL's landcare staff and support for onground projects by the staff and community. The current DNIP sites include Liege St, Wharf St and Anvil Way.



Brett Kuhlmann

### **DITTE STREBEL**

#### **Restoration Project Officer and Analyst**

Ditte's role involves the development of a system for recording project and scientific data, providing GIS guidance, supervision and training, and assisting with the UWR and other onground projects.



Ditte Strebel

### **DEBRA TABORDA**

#### **Environmental Education Officer**

Debs role with SERCUL is to assist in the delivery of the Phosphorus Awareness Project by presenting to school students and helping to coordinate community events. Deb is also aligning our current school programs to the National Curriculum Science document and the National Sustainability Curriculum Framework. Deb is also developing year-specific packages of pre and post SERCUL visit activities that will allow for integration of these programs into classroom units.



Debra Taborda

### **ALICE ATKINSON**

#### **Landcare Project Officer**

Alice began with SERCUL in October 2011 as a Project Officer. Her main role is to deliver onground management actions with coordination and supervision of local community volunteers and casual landcare workers. Alice will be devising comprehensive work plans for currently funded projects and maintenance of previous projects.



Alice Atkinson



## THANK YOU

The South East Regional Centre for Urban Landcare Inc. Committee and Staff sincerely thank all the Community Groups, Non Government Organisations, Volunteers, Local Government Authorities, State and Australian Government Departments and Private Business project partners for your contribution towards the care and protection of the Natural Resources of the Swan Region during the 2010 - 2011 year. We look forward to continuing our partnerships in 2011 - 2012 to achieve an even more sustainable approach to Natural Resource Management in Perth, Western Australia.

**Good luck for 2011 - 2012**



**South East Regional Centre for Urban Landcare Inc.**

69 Horley Road Beckenham WA 6107

Phone: 9458 5664 Facsimile: 9458 5661

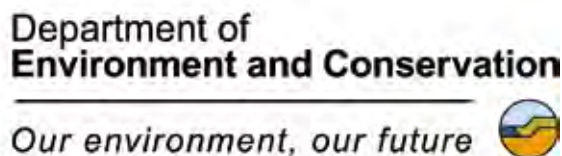
Email: [julierobert@sercul.org.au](mailto:julierobert@sercul.org.au)

Website: [www.sercul.org.au](http://www.sercul.org.au)



## ACKNOWLEDGEMENT OF FUNDING PARTNERS

The South East Regional Centre for Urban Landcare acknowledges and sincerely thanks the following Australian Government Departments, State Government of WA Departments, Natural Resource Management organisations, Private Businesses, Local Governments, and Community groups for their financial and in-kind contributions which has led to the success of our project delivery for the 2010 - 2011 year.



*Caring for the Swan Canning Riverpark*









[www.sercul.org.au](http://www.sercul.org.au)



South East Regional Centre for Urban Landcare

## **South East Regional Centre for Urban Landcare**

69 Horley Road

Beckenham, WA

Ph: (08) 9458 5664

Fax: (08) 9458 5661

[julierobert@sercul.org.au](mailto:julierobert@sercul.org.au)

