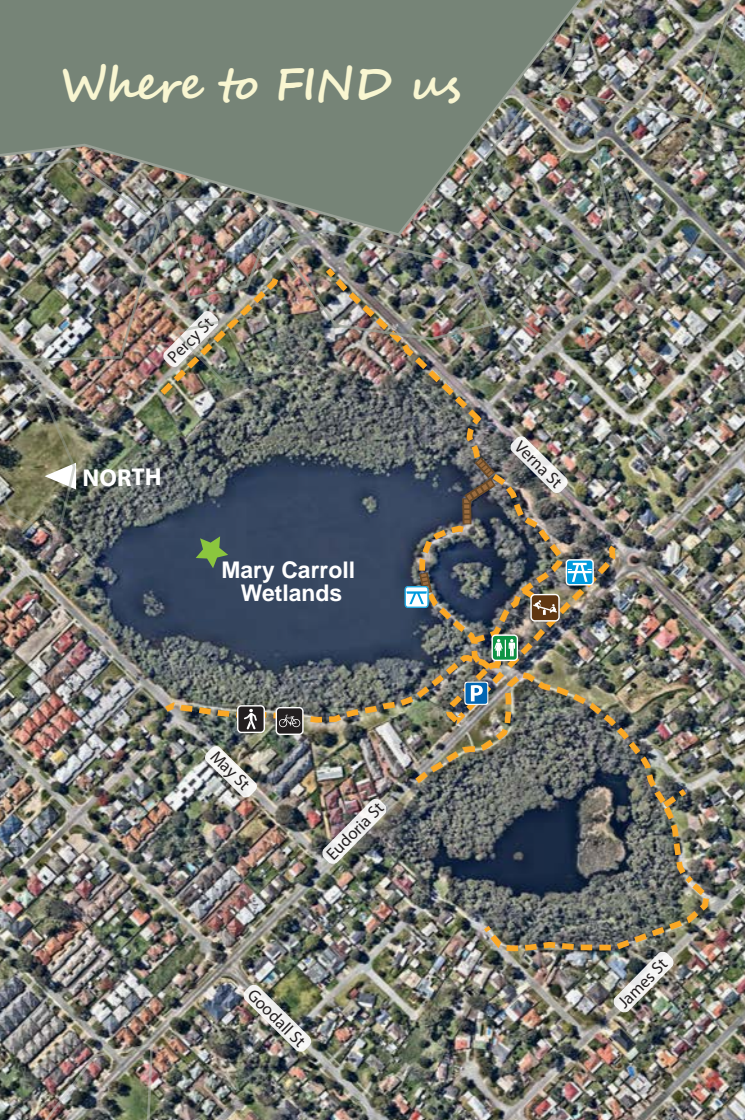


Where to FIND us



Mary Carroll Wetlands are located in the City of Gosnells and can be accessed by Eudoria Street.

Facilities Available on-site

Main car park on Eudoria Street and limited parking on May Street
Universal toilets and Changing place
All ability playground
Footpath circuit
Seating/shelters
Bridge over wetland
Free barbecues
Signage



CONTACT US

The Friends of Mary Carroll Wetland are very important to the future well-being of these wetlands. If you are interested in joining our friends group in any way or would like to know more about the Mary Carroll Wetlands please contact us:

Unice Robinson

friendsofmarycarrollwetlands@gmail.com

T 0434 831 230 Follow us [facebook icon](https://www.facebook.com/friendsofmarycarroll) [friendsofmarycarroll](https://www.facebook.com/friendsofmarycarroll)

www.sercul.org.au/marycarroll

Supported by AGLG, City of Gosnells and SERCUL.

Funded by State NRM grants and City of Gosnells.



Friends of MARY CARROLL WETLAND

*Caring for an IMPORTANT
Suburban Wetland*

ABOUT US

FRIENDS OF MARY CARROLL WETLAND

The Friends of Mary Carroll Wetland is a community group that works with the City of Gosnells and various landcare organisations to restore the natural environment of the wetlands located at Mary Carroll Park, Gosnells.

The Friends group commenced as a small weeding group in the late 1970s concerned by the deteriorating condition of the wetlands.

Today the Friends group maintains the same aims; to rehabilitate, preserve and maintain the natural environment of Mary Carroll Nature Reserve for benefit and well being of the natural flora and fauna.

ABOUT THE WETLANDS

Mary Carroll Wetlands are an important seasonal wetland ecosystem on the Swan Coastal Plain that is of major breeding and refuge importance for waterbirds.

Set aside as a local reserve in 1971, Mary Carroll Park was named in honour of Mrs Mary Carroll, a well-known naturalist and teacher at the nearby Gosnells Primary School between 1923 and 1956, who would take students to the wetlands to learn from nature.

The area has been of broader community interest since then and its environmental importance has been recognised through

- Environmental Protection Authority recommendation as a Conservation Reserve (System 6 report, 1983)
- Department of Parks and Wildlife designation as a Conservation Category Wetland
- West Australian Planning Commission listing as Bush Forever Site(124)
- City of Gosnells management planning and ongoing rehabilitation commitment

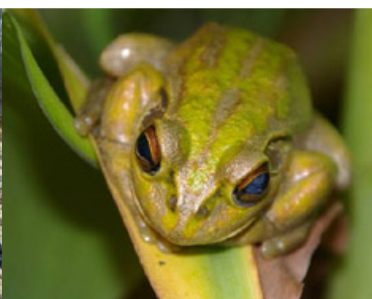
FLORA AND FAUNA

Replanting native vegetation provides habitat and protection for birds and animals and at the same time it takes up harmful nutrients that make their way into the wetlands.

Mary Carroll Wetlands support a large number of waterbirds (39 species) and bush birds/song birds (47 species). Waterbirds are seasonal visitors to the wetlands, dependent on the depth of water. One species, the banded stilt, is migratory within Australia, breeding in inland salt lakes and visiting the wetlands' mud flats when food is abundant. The wetland supports many lizards, frogs, turtles and insects.



Melaleuca flower



Friends are committed to the rejuvenation and improvement the wetlands through:

- Enjoying the beauty of our wetland
- Hand weeding
- Woody weed removal
- Revegetation
- Education - displays
- Eco walks and talks
- Seed collecting
- Growing native species
- Adopt a Spot clean up
- Working with other community groups
- Bird watching
- Turtle watch
- Macro invertebrate testing
- Enjoying a cuppa



A place to call home